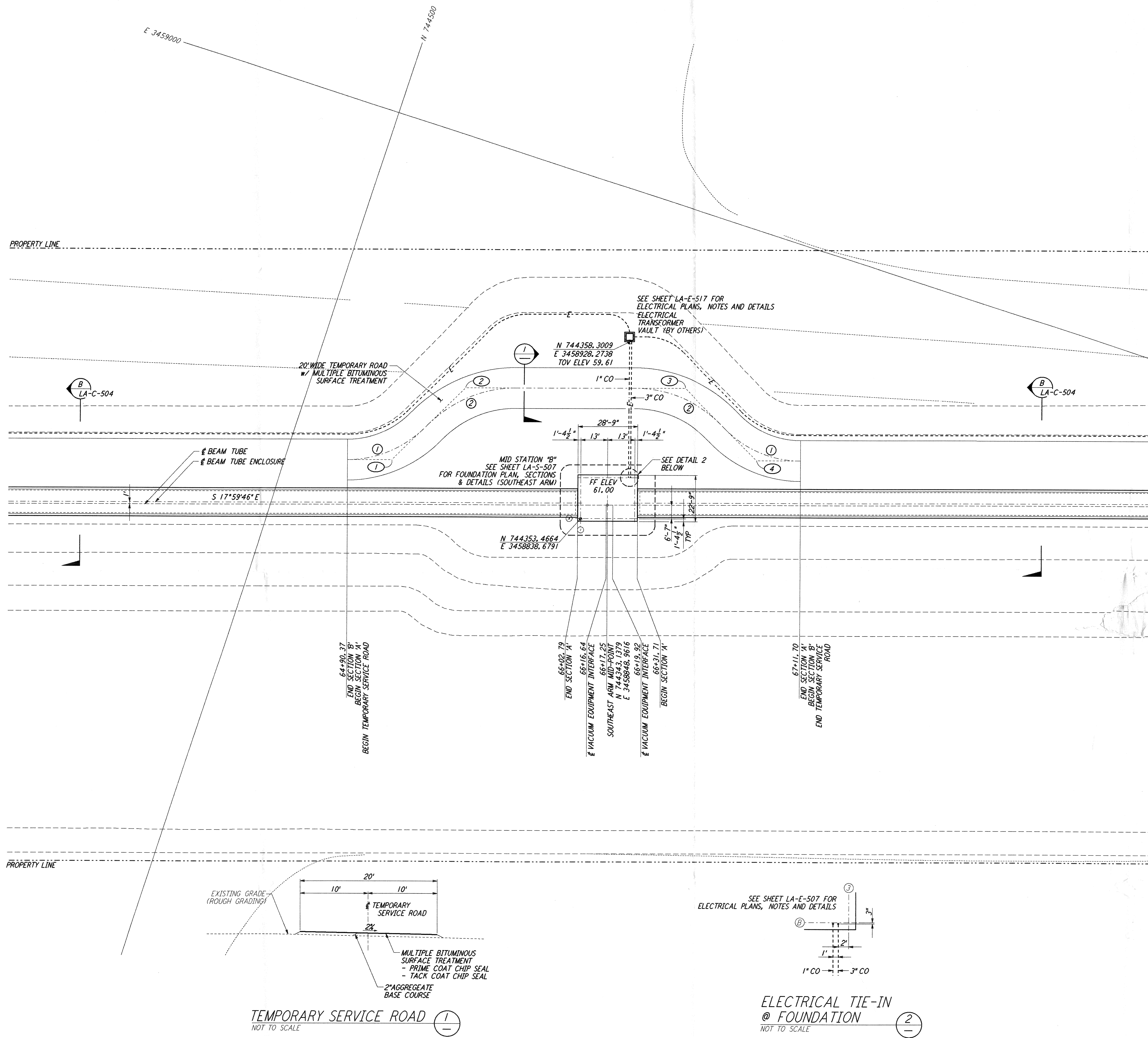


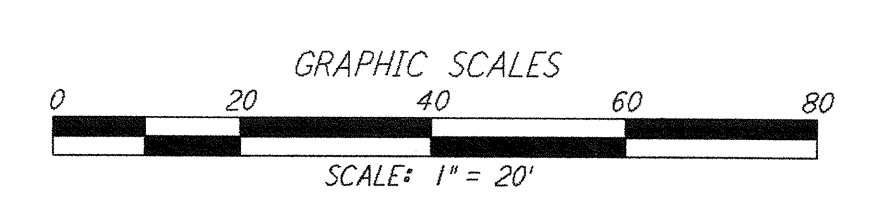
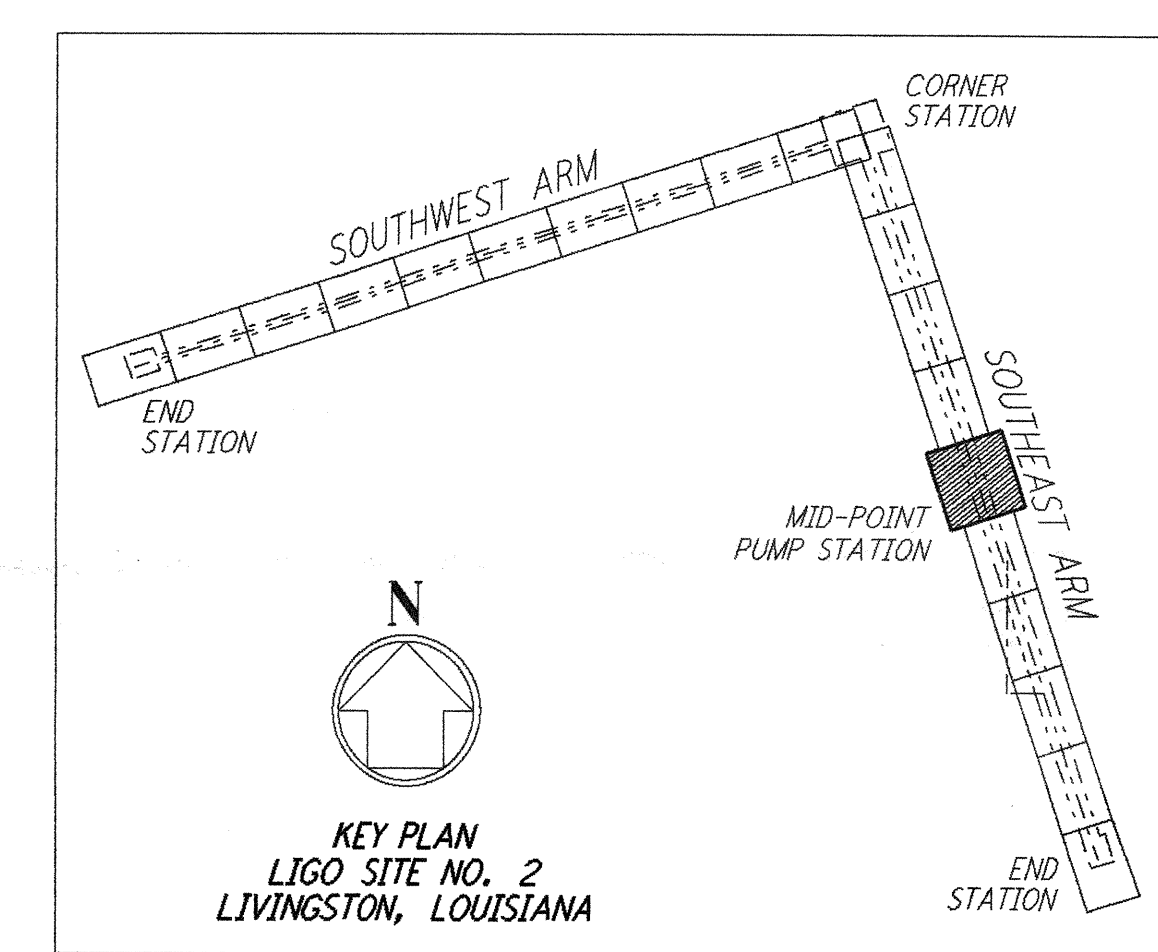
NOTES:

1. SEE SHEET LA-C-502 FOR GENERAL NOTES, LEGEND AND ABBREVIATIONS.
2. SEE SHEET LA-C-504 FOR TYPICAL SECTIONS AND DETAILS.



Curve	Δ	RADIUS	LENGTH	TANGENT	REMARK
1	45°00'00"	52'	40.84'	21.54'	TEMPORARY ROAD
2	45°00'00"	60'	47.12'	24.85'	TEMPORARY ROAD

Curve	NORTH	EAST	REMARK
1	744450.1181	3458837.3414	PI TEMPORARY ROAD
2	744427.3479	3458892.0229	PI TEMPORARY ROAD
3	744325.2733	3458915.1812	PI TEMPORARY ROAD
4	744280.5922	3458892.4109	PI TEMPORARY ROAD



LIGO-D961286-B-0

not be reproduced, copied, loaned, exhibited, or used in any other way, except by written consent from PARSONS to the borrower.

This document and the design it covers are the property of PARSONS. They are loaned only with the borrower's expressed written agreement that they will

NO.	DATE	BY	CHKD	ENGR	PRJ	DESCRIPTION
B	7/24/96	WRB	ML	DB	DOM	ISSUED FOR BID
A	6/28/96	WRB	ML	JB	TDM	FINAL DESIGN REVIEW

DRAWN	WRB	6/24/96
CHECKED		
ENGINEER		
PROJ		

PARSONS
 100 WEST WALNUT STREET
 PASADENA, CALIFORNIA

LIGO
 CALIFORNIA INSTITUTE OF TECHNOLOGY
 MASSACHUSETTS INSTITUTE OF TECHNOLOGY

LASER INTERFEROMETER
 GRAVITATIONAL-WAVE OBSERVATORY
 BEAM TUBE ENCLOSURE - LIVINGSTON, LA

CIVIL
 SOUTHEAST ARM
 PUMP STATION
 PLOT AND UTILITY PLAN

SCALE: 1" = 20'
 SHEET NO. PPI50969
 PROJECT NO. 8094
LA-C-541

L:\JULI_23_06\46341_170_53\WORK\JAVLUTIS\VALUES\JOB\LA-C-541.PLT

L:\JULI_23_06\46341_170_53\WORK\JAVLUTIS\VALUES\JOB\LA-C-541.PLT