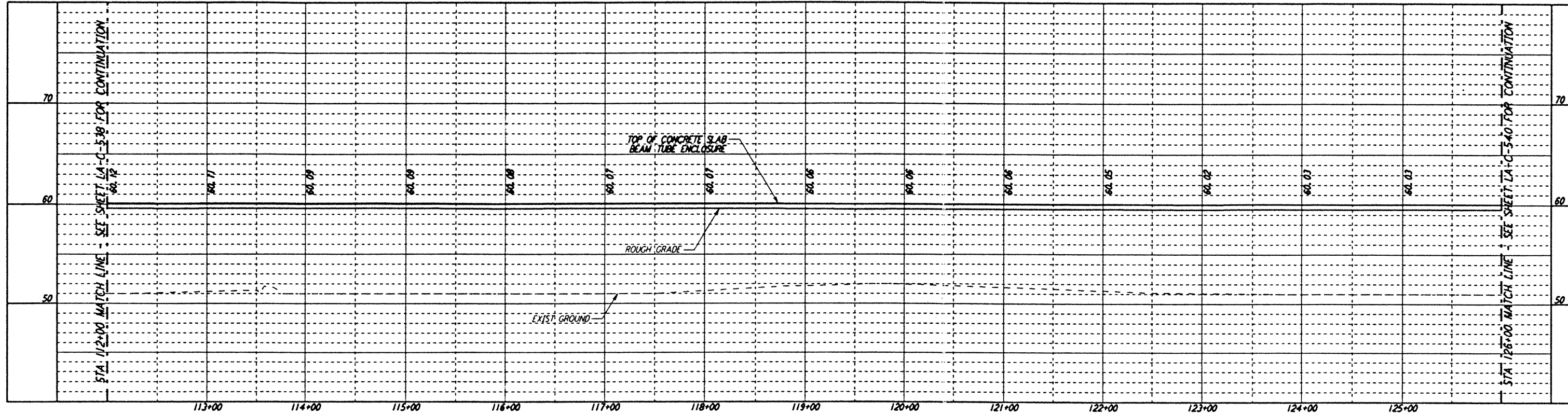
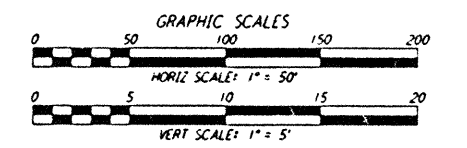
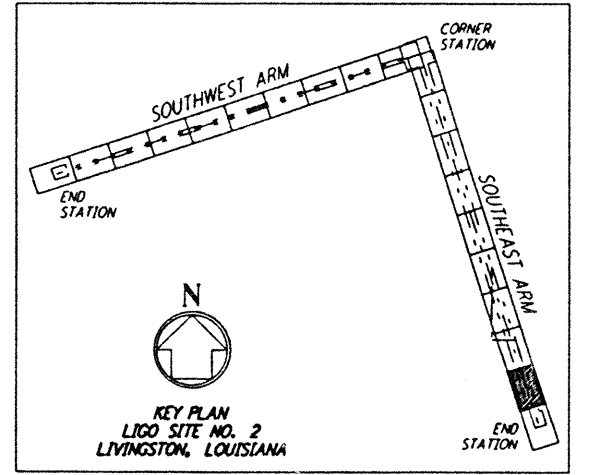
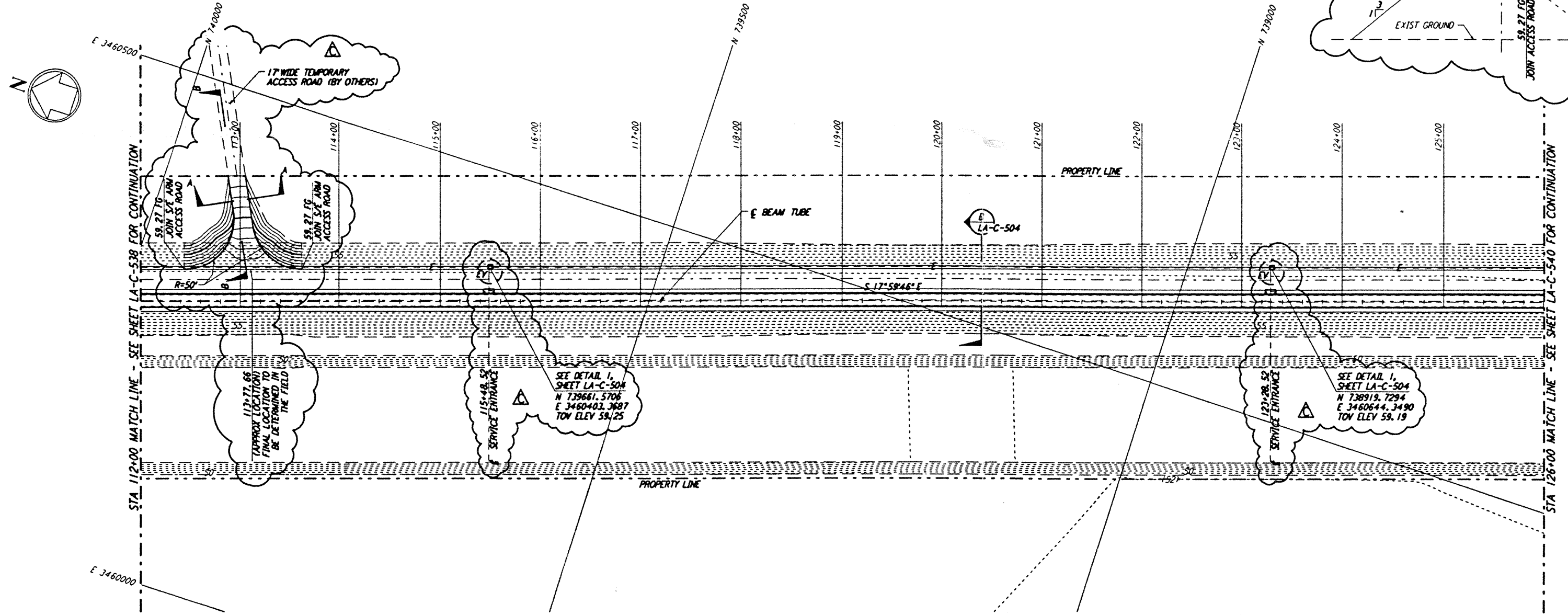
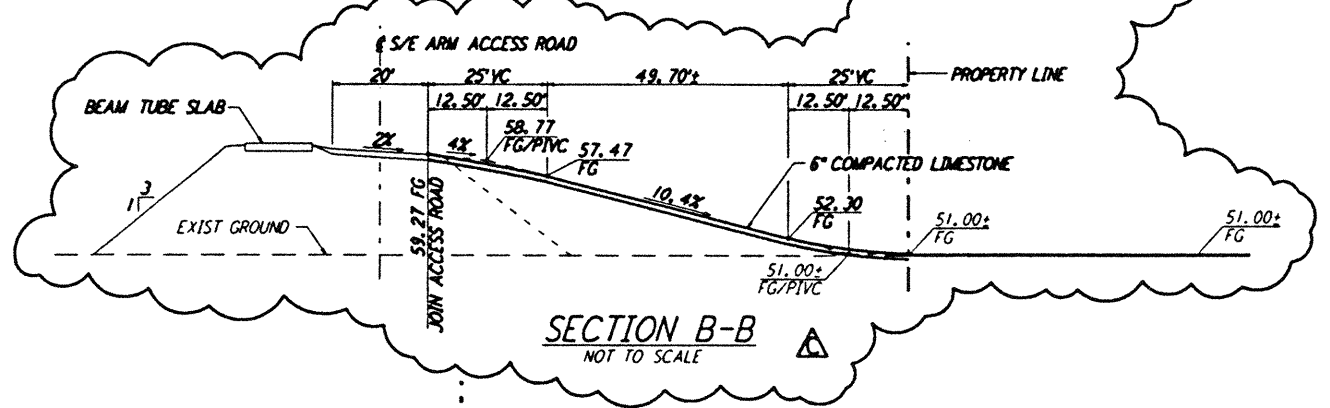
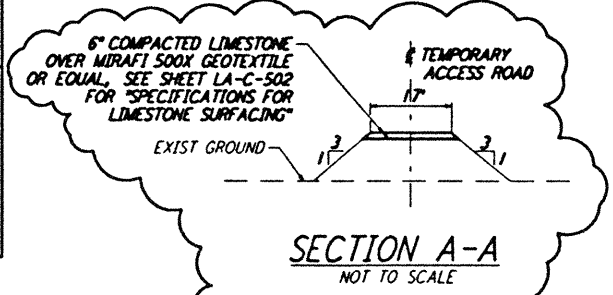


Mon Sep 30 07:58:25 1996 s3-v18b2 J:\PLOTS\QUEUES\16B2\CE539C.PRF

This document and the design it covers are the property of PARSONS. They are loaned only with the borrower's expressed written agreement that they will not be reproduced, copied, loaned, exhibited, or used in any other way, except by written consent from PARSONS to the borrower.



- NOTES:**
- SEE SHEET LA-C-502 FOR GENERAL NOTES, LEGEND AND ABBREVIATIONS.
 - SEE SHEET LA-C-504 FOR TYPICAL SECTIONS AND DETAILS.
 - ALL GRADES, DIMENSIONS AND ELEVATIONS SHOWN FOR THE TEMPORARY ACCESS ROAD ARE APPROXIMATE, PENDING FINAL LOCATION IN THE FIELD.



NO.	DATE	BY	CHKD	ENGR	PROJ	DESCRIPTION
C	9/27/96	WRB	ML	JB	TDM	BID ADDENDUM NO. 3
B	9/10/96	WRB	ML	JB	TDM	BID ADDENDUM NO. 2
A	6/28/96	WRB	ML	JB	TDM	FINAL DESIGN REVIEW

DRAWN	WRB	6/24/96
CHECKED		
ENGINEER		
PROJ		

PARSONS
 100 WEST WALNUT STREET
 PASADENA, CALIFORNIA

LIGO
 CALIFORNIA INSTITUTE OF TECHNOLOGY
 MASSACHUSETTS INSTITUTE OF TECHNOLOGY

LASER INTERFEROMETER
GRAVITATIONAL-WAVE OBSERVATORY
BEAM TUBE ENCLOSURE - LIVINGSTON, LA

TITLE: CIVIL SOUTHEAST ARM PLAN AND PROFILE STA 112+00 TO STA 126+00
 AS NOTED PPI50969 8094
LA-C-539