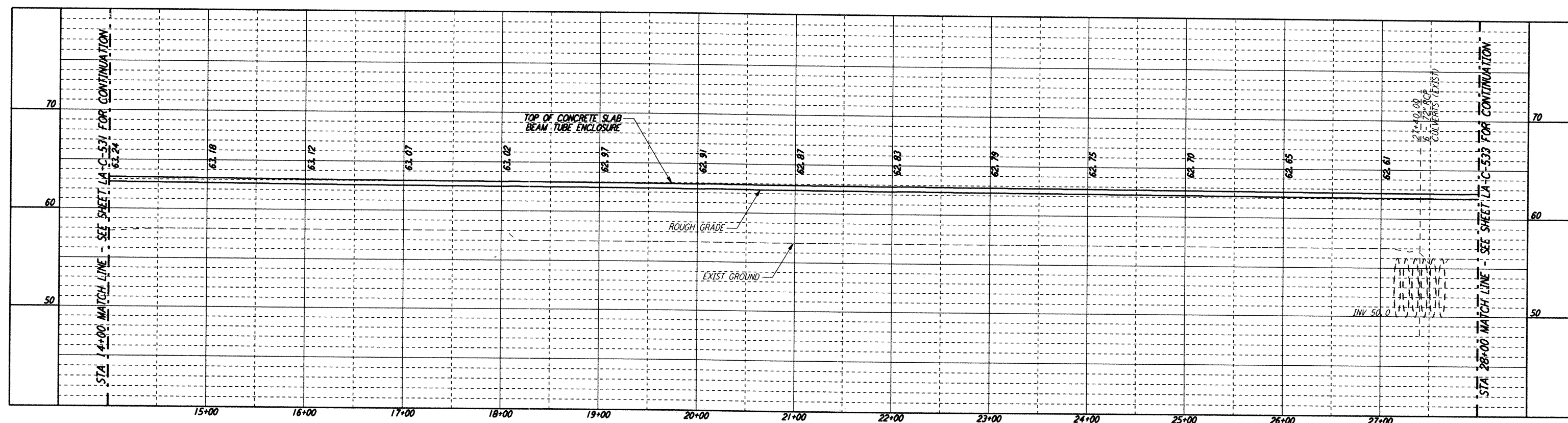


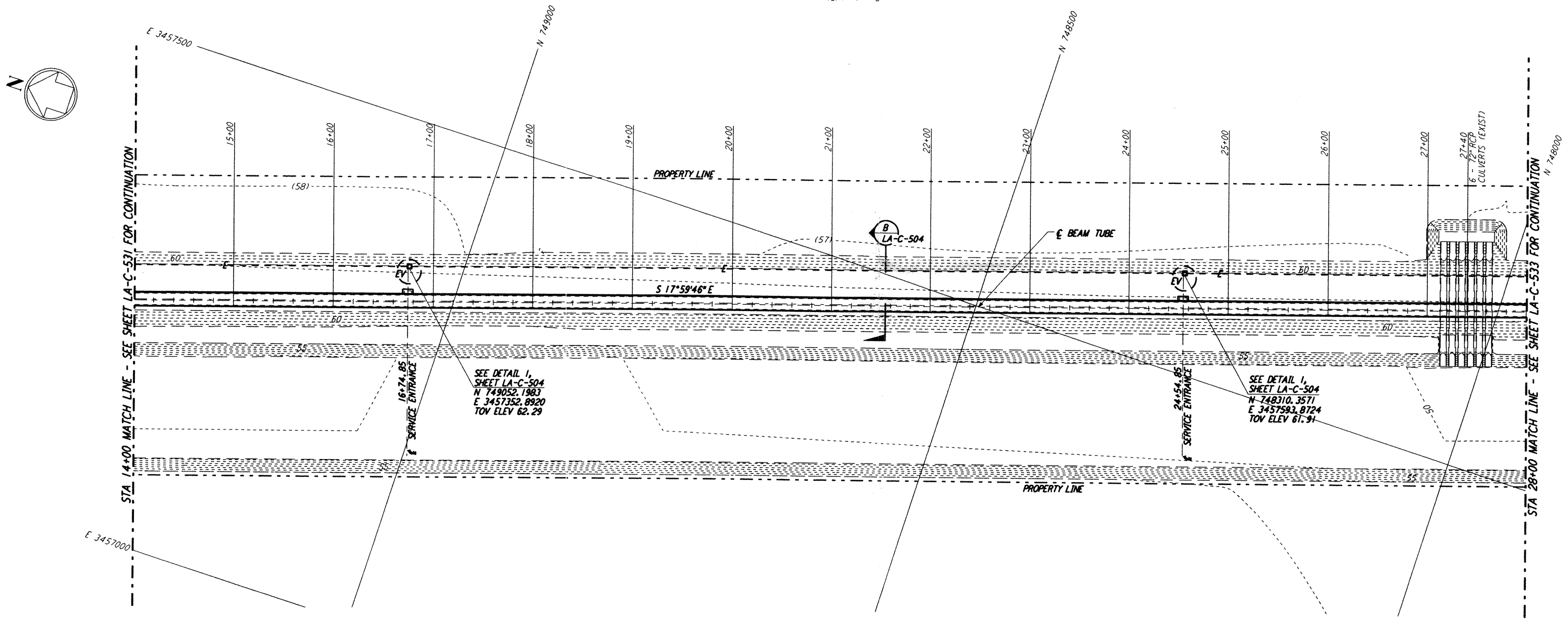
Mon Sep 09 18:03:30 1996 s3-v18b2 J:\PLOTS\QUEUES\18B2\CE532A.PRF

DATE: 09/09/96 TIME: 18:07:47
 DESIGN FILE: I:\ligo\site2\ce\laco532.dgn

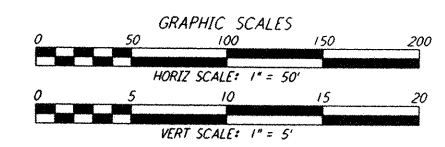
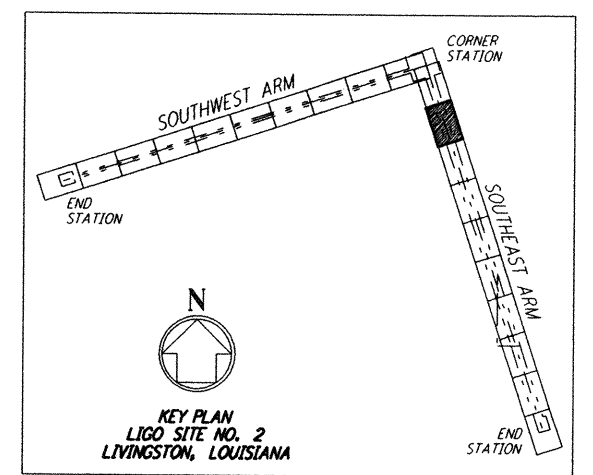
NOTES:
 1. SEE SHEET LA-C-502 FOR GENERAL NOTES, LEGEND AND ABBREVIATIONS.
 2. SEE SHEET LA-C-504 FOR TYPICAL SECTIONS AND DETAILS.



PROFILE
 SCALES: HORIZ: 1" = 50'
 VERT: 1" = 5'



PLAN
 SCALE: 1" = 50'



REFERENCES		DRAWN: WRB 6/24/96	
REVISIONS		CHECKED:	
NO. DATE BY CHKD ENGR PROJ DESCRIPTION		ENGINEER:	
B 9/10/96 WRB ML JB BID ADDENDUM NO. 2		PROJ:	
A 6/28/96 WRB ML JB TDJ FINAL DESIGN REVIEW		DESCRIPTION:	

PARSONS
 100 WEST WALNUT STREET
 PASADENA, CALIFORNIA

LIGO
 CALIFORNIA INSTITUTE OF TECHNOLOGY
 MASSACHUSETTS INSTITUTE OF TECHNOLOGY

LASER INTERFEROMETER GRAVITATIONAL-WAVE OBSERVATORY BEAM TUBE ENCLOSURE - LIVINGSTON, LA

TITLE	SCALE	CONTRACT NUMBER	PROJECT NUMBER
CIVIL	AS NOTED	PP150969	8094
SHEET NUMBER		REVISIONS	
LA-C-532		B	

STA 14+00 TO STA 28+00
 LIGO-D961277-B-0

This document and the design it covers are the property of PARSONS. They are loaned only with the borrower's expressed written agreement that they will not be reproduced, copied, loaned, exhibited, or used in any other way, except by written consent from PARSONS to the borrower.