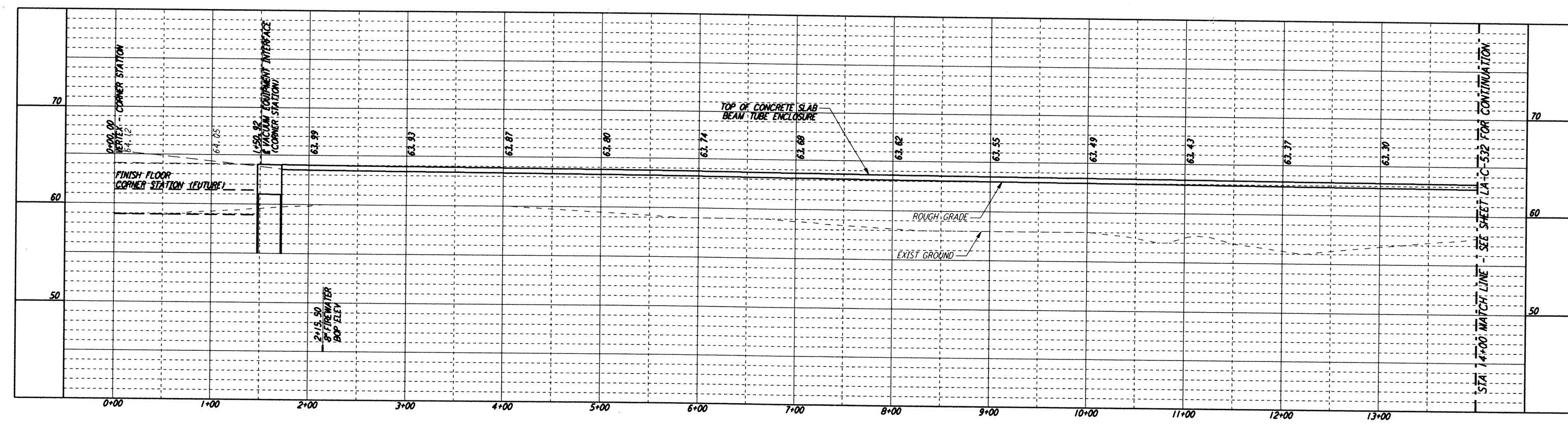


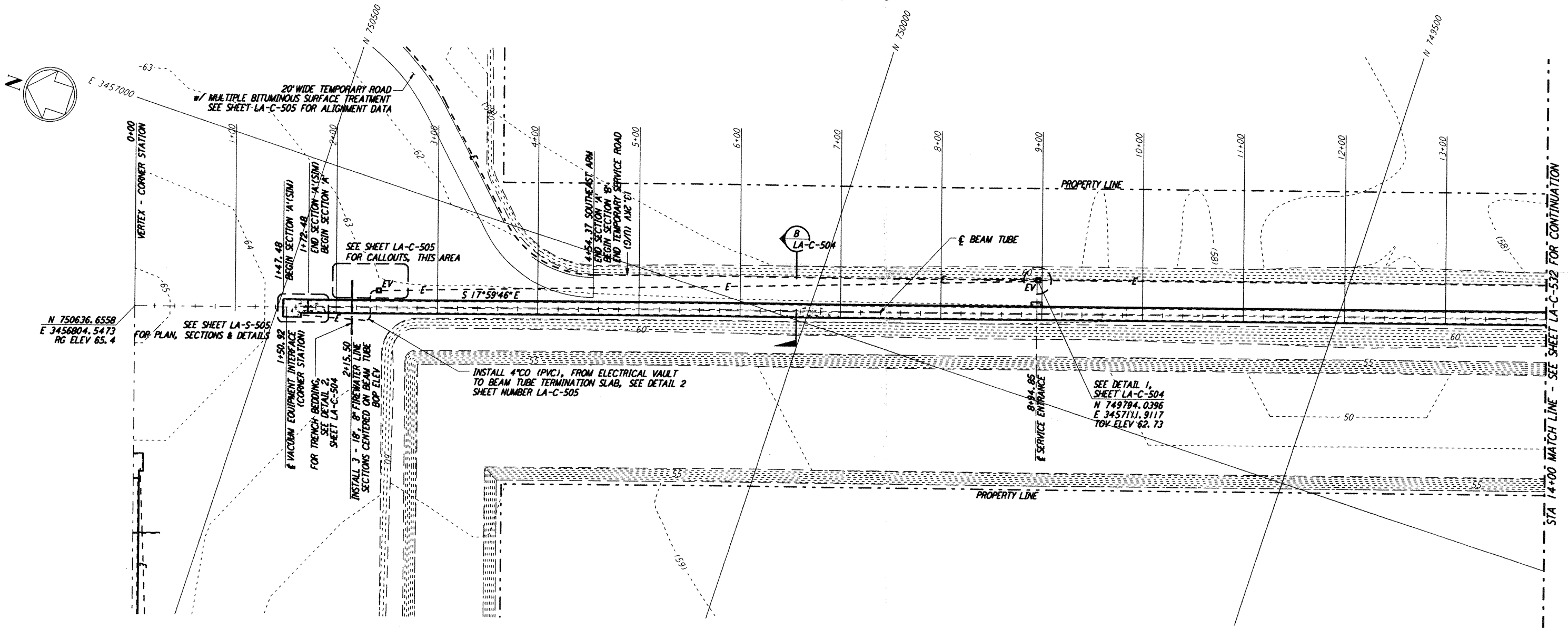
Mon Sep 09 17:56:38 1996 s3-v1802 J:\PLOTS\QUEUES\18B2\CE531A.PRF

DATE: 09/09/96 TIME: 18:01:10  
 DESIGN FILE: I:\ligo\site2\ce\lacs31.dwg

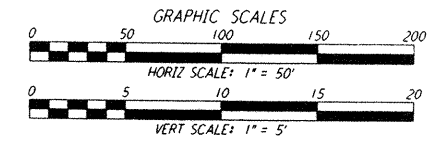
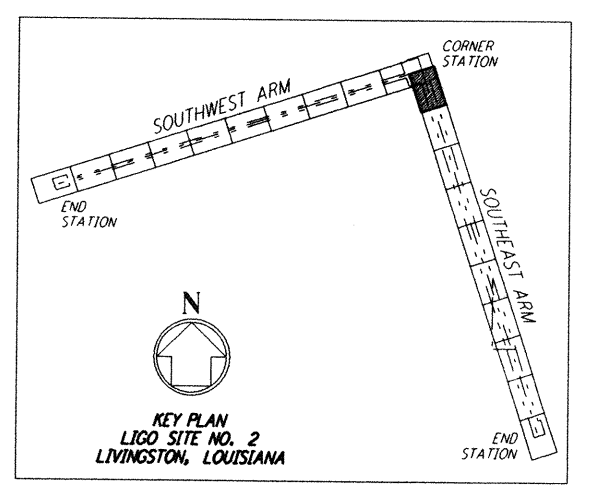
- NOTES:**
- SEE SHEET LA-C-502 FOR GENERAL NOTES, LEGEND AND ABBREVIATIONS.
  - SEE SHEET LA-C-504 FOR TYPICAL SECTIONS AND DETAILS.



**PROFILE**  
 SCALES: HORIZ: 1" = 50'  
 VERT: 1" = 5'



**PLAN**  
 SCALE: 1" = 50'



NO.	DATE	BY	CHKD	ENGR	PROJ	DESCRIPTION
B	9/10/96	WRB	ML	JB	TOM	BID ADDENDUM NO. 2
A	6/28/96	WRB	ML	JB	TOM	FINAL DESIGN REVIEW

DRAWN	WRB	6/24/96
CHECKED		
ENGINEER		
PROJ		

**PARSONS**  
 100 WEST WALNUT STREET  
 PASADENA, CALIFORNIA

**LIGO**  
 CALIFORNIA INSTITUTE OF TECHNOLOGY  
 MASSACHUSETTS INSTITUTE OF TECHNOLOGY

**LASER INTERFEROMETER  
 GRAVITATIONAL-WAVE OBSERVATORY  
 BEAM TUBE ENCLOSURE - LIVINGSTON, LA**

TITLE	CIVIL	SCALE	CONTRACT NUMBER	PROJECT NUMBER
	SOUTHWEST ARM PLAN AND PROFILE	AS NOTED	PP150969	8094
	STA 0+00 TO STA 14+00	SHEET NUMBER	<b>LA-C-531</b>	REVISIONS

LIGO-D961276-B-0

LIGOLF3.BOR