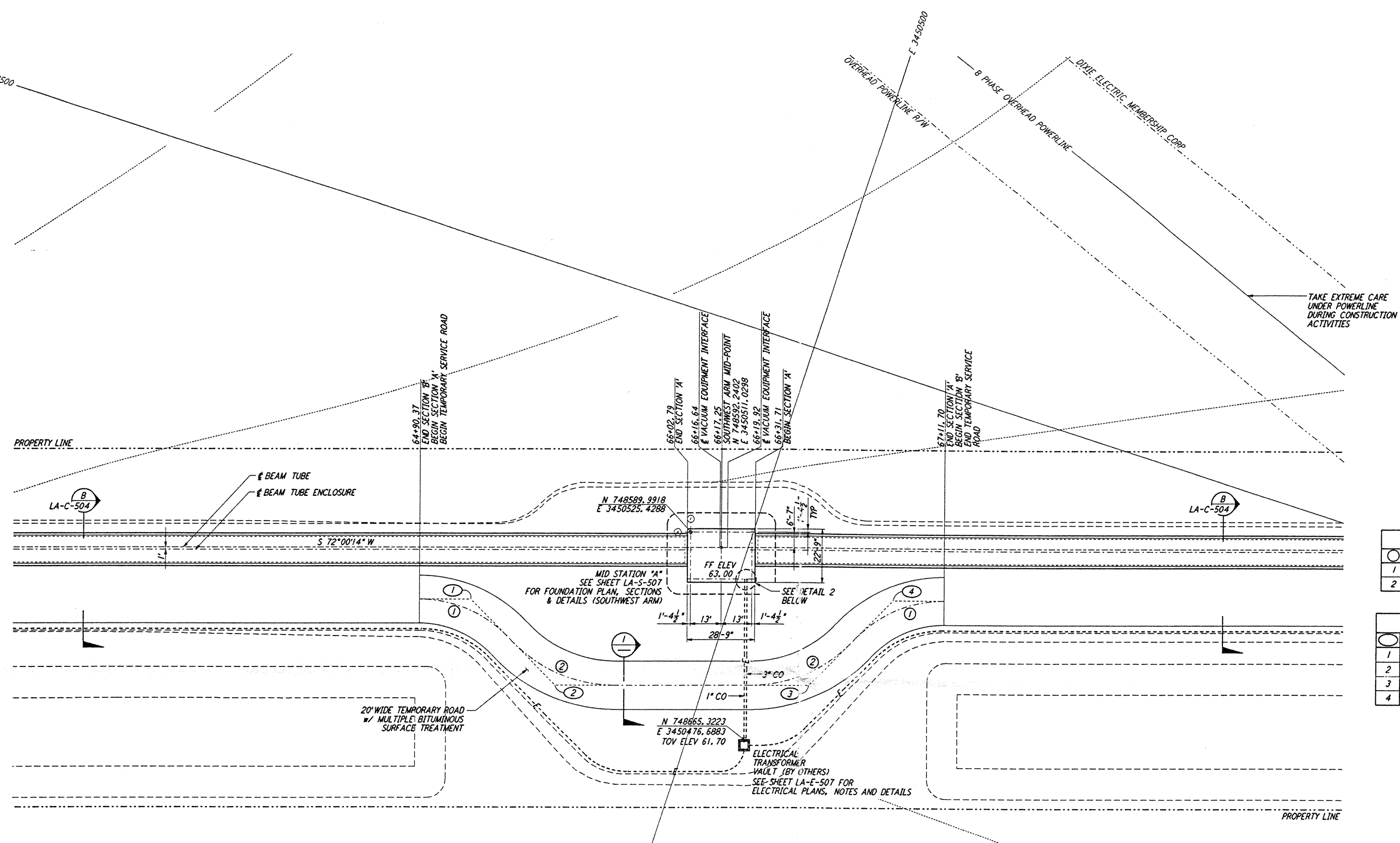
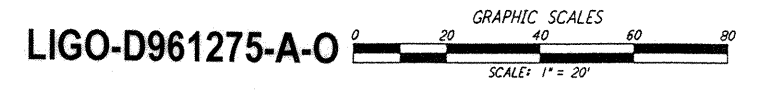
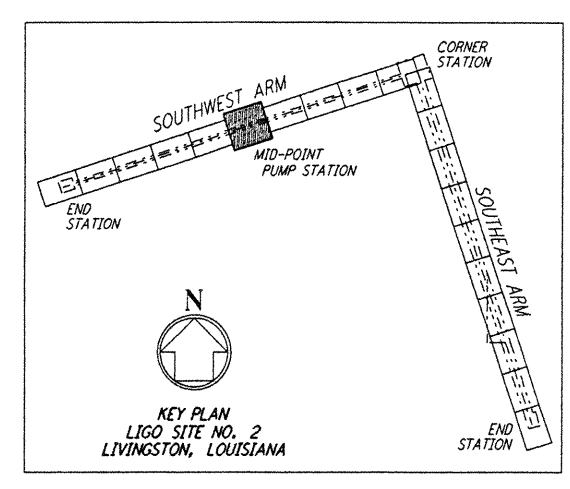
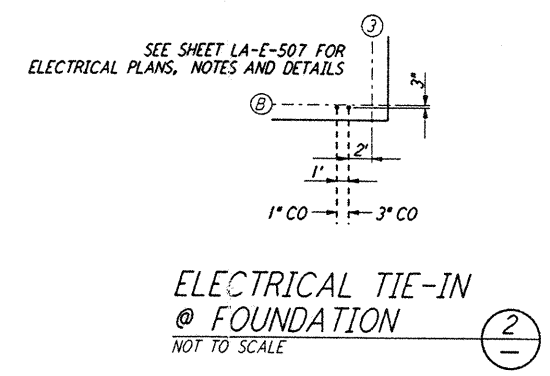
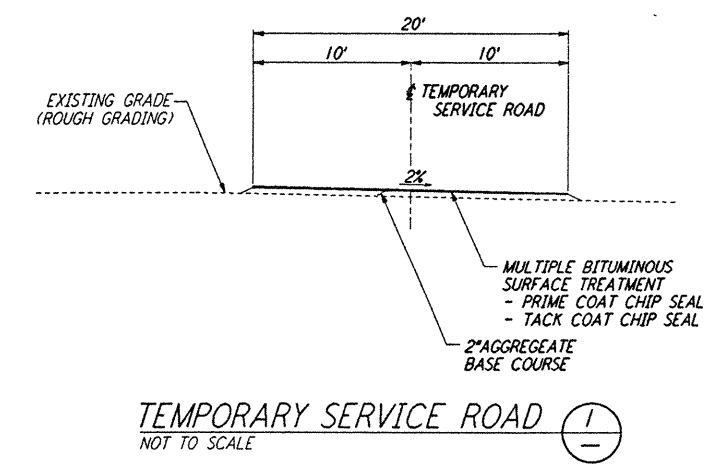


NOTES:
 1. SEE SHEET LA-C-502 FOR GENERAL NOTES, LEGEND AND ABBREVIATIONS.
 2. SEE SHEET LA-C-504 FOR TYPICAL SECTIONS AND DETAILS.



CURVE DATA					
Δ	RADIUS	LENGTH	TANGENT	REMARK	
1	45°00'00"	52'	40.84'	21.54'	TEMPORARY ROAD
2	45°00'00"	60'	47.12'	24.85'	TEMPORARY ROAD

COORDINATES			
Δ	NORTH	EAST	REMARK
1	748645.7089	3450604.4199	PI TEMPORARY ROAD
2	748668.4802	3450559.7285	PI TEMPORARY ROAD
3	748635.3154	3450457.6570	PI TEMPORARY ROAD
4	748590.6389	3450434.8926	PI TEMPORARY ROAD



This document and the design it covers are the property of PARSONS. They are loaned only with the borrower's expressed written agreement that they will not be reproduced, copied, loaned, exhibited, or used in any other way, except by written consent from PARSONS to the borrower.

NO.	DATE	BY	CHKD	ENGR	PROJ	DESCRIPTION
A	6/28/96	WRB	MLL	CP	DMH	FINAL DESIGN REVIEW

DRAWN	WRB	6/24/96
CHECKED		
ENGINEER		
PROJ		

PARSONS
 100 WEST WALNUT STREET
 PASADENA, CALIFORNIA

LIGO
 CALIFORNIA INSTITUTE OF TECHNOLOGY
 MASSACHUSETTS INSTITUTE OF TECHNOLOGY

LASER INTERFEROMETER
 GRAVITATIONAL-WAVE OBSERVATORY
 BTE SITWORK & FABRICATION - LIVINGSTON, LA

CIVIL
 SOUTHWEST ARM
 PUMP STATION
 PLOT AND UTILITY PLAN

SCALE: 1" = 20'
 CONTRACT NUMBER: PPI50969
 PROJECT NUMBER: 8094
 SHEET NUMBER: LA-C-521

P:\LIGO\CE\BTE\BTE\LA-C-521.DWG (L) 6/28/96 9:55:03 AM

P:\LIGO\CE\BTE\BTE\LA-C-521.DWG (L) 6/28/96 9:55:03 AM