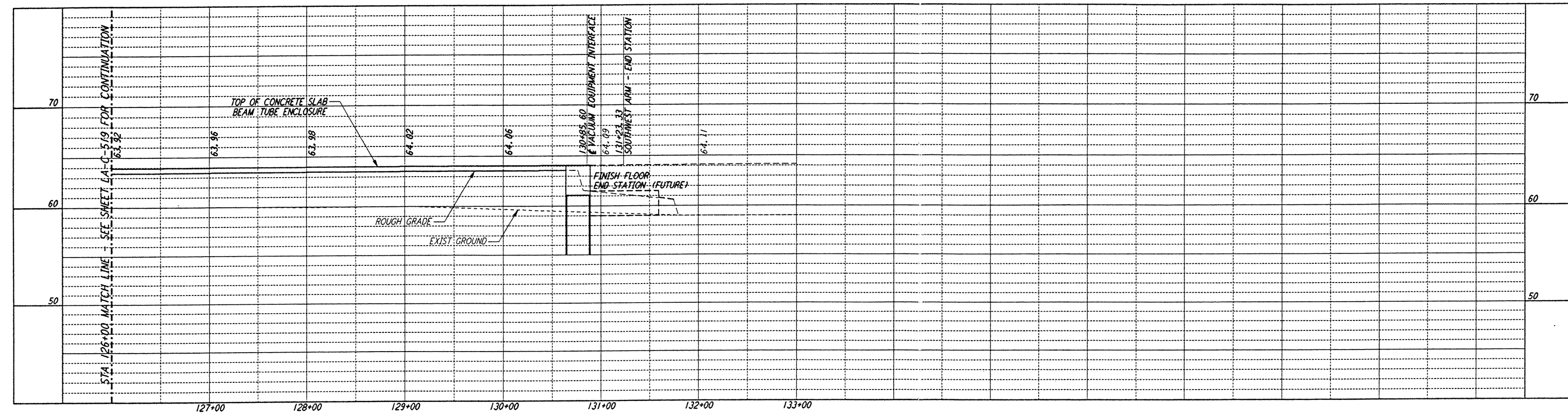
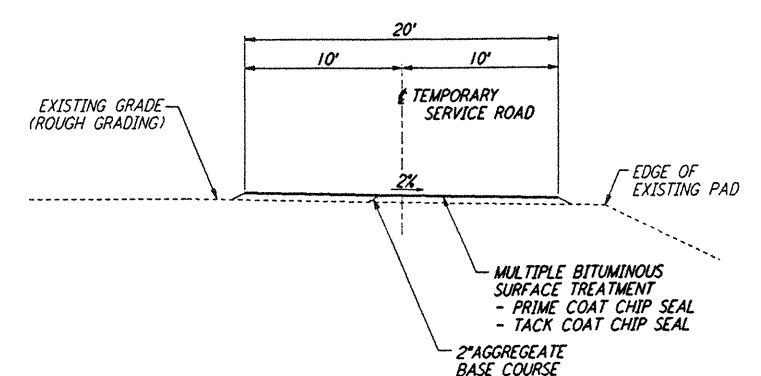


NOTES:
 1. SEE SHEET LA-C-502 FOR GENERAL NOTES, LEGEND AND ABBREVIATIONS.
 2. SEE SHEET LA-C-504 FOR TYPICAL SECTIONS AND DETAILS.

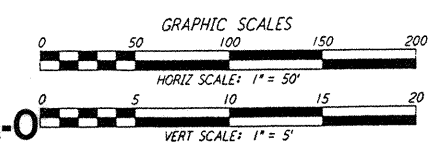
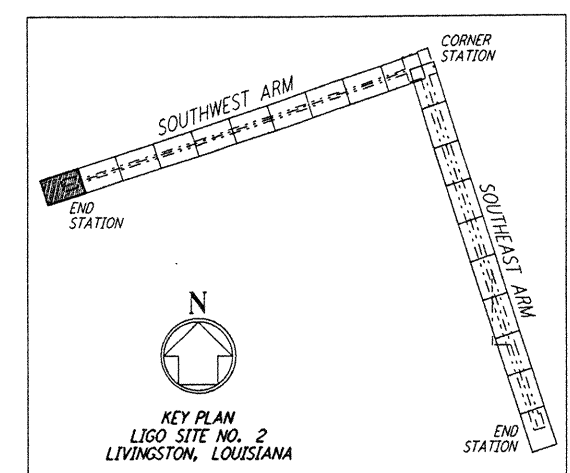


CURVE DATA					
Δ	RADIUS	LENGTH	TANGENT	REMARK	
1 35°00'00"	110'	67.19'	34.68'	⊥ ROAD	
2 35°00'00"	100'	61.07'	31.53'	⊥ ROAD	

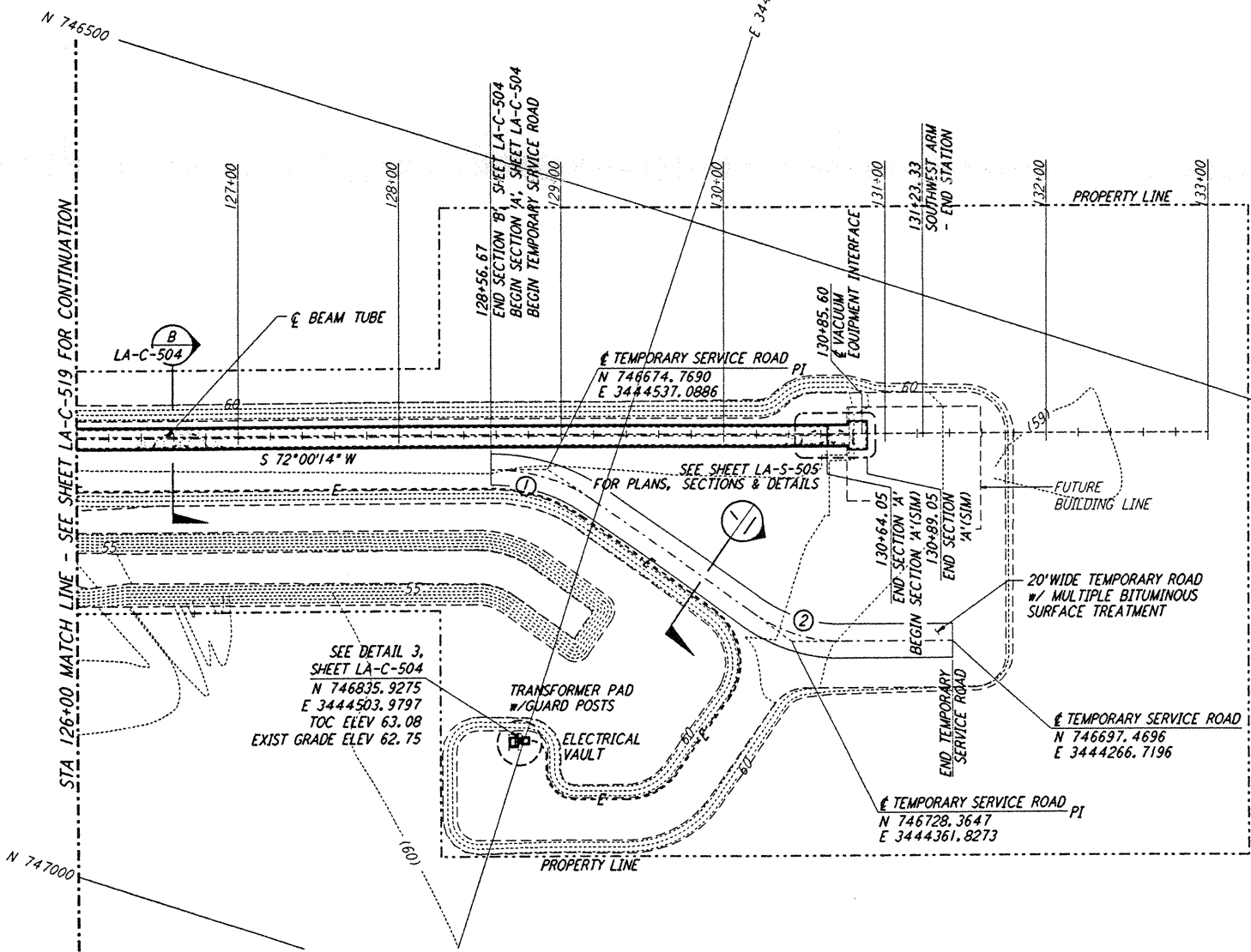
PROFILE
 SCALES: HORIZ: 1" = 50'
 VERT: 1" = 5'



TEMPORARY SERVICE ROAD
 NOT TO SCALE



LIGO-D961274-A-0



PLAN
 SCALE: 1" = 50'

This document and the design it covers are the property of PARSONS. They are loaned only with the borrower's expressed written agreement that they will not be reproduced, copied, loaned, exhibited, or used in any other way, except by written consent from PARSONS to the borrower.

NO.	DATE	BY	CHKD	ENGR	PROJ	DESCRIPTION
A	6/28/96	WRB	MLL	CP	SYM	FINAL DESIGN REVIEW

DRAWN	WRB	6/24/96
CHECKED		
ENGINEER		
PROJ		

PARSONS
 100 WEST WALNUT STREET
 PASADENA, CALIFORNIA

LIGO
 CALIFORNIA INSTITUTE OF TECHNOLOGY,
 MASSACHUSETTS INSTITUTE OF TECHNOLOGY

LASER INTERFEROMETER
 GRAVITATIONAL-WAVE OBSERVATORY
 BTE SITING & FABRICATION - LIVINGSTON, LA

CIVIL
 SOUTHWEST ARM
 PLAN AND PROFILE
 STA 126+00 TO STA 133+00

AS NOTED PP150969 8094
LA-C-520

LIGO-D961274-A-0