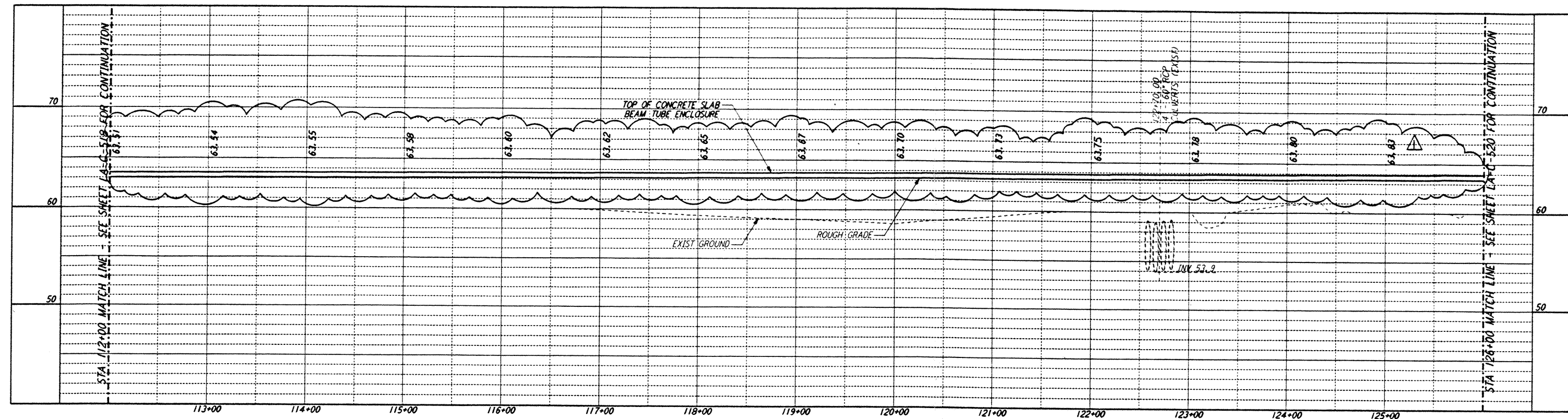
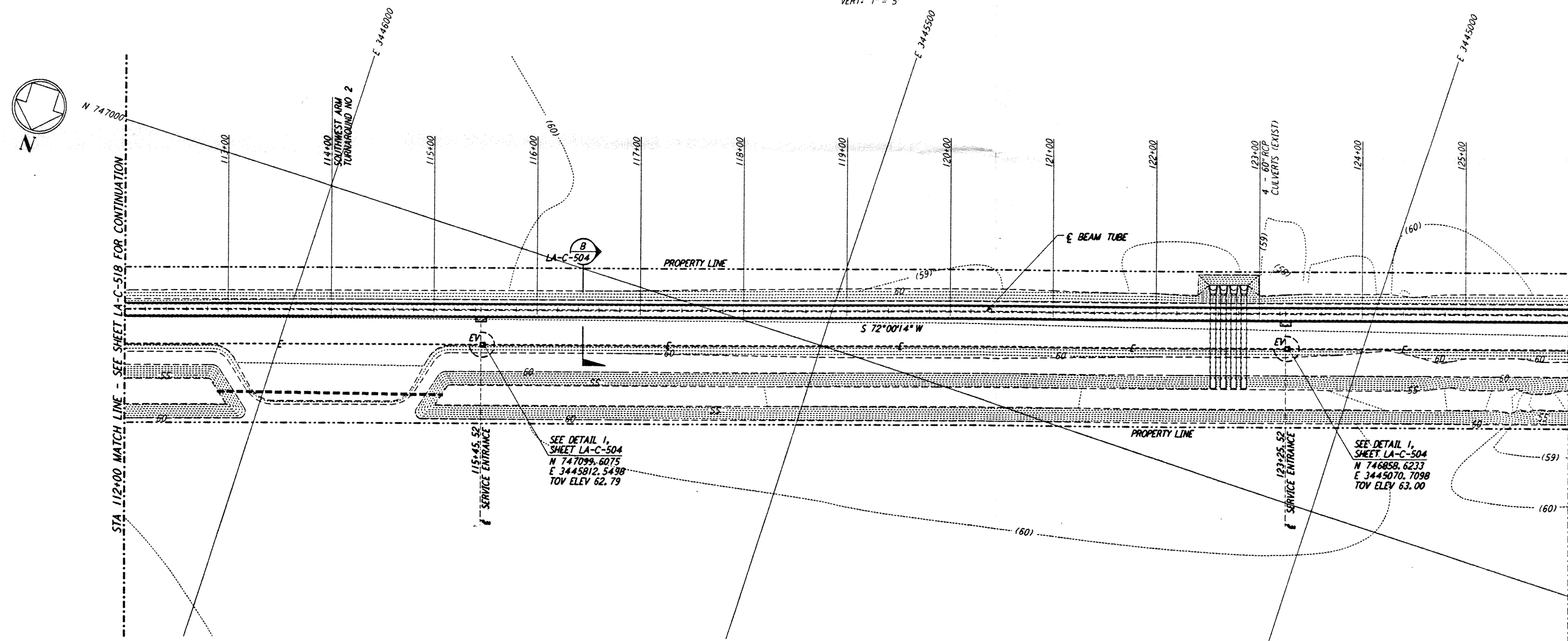


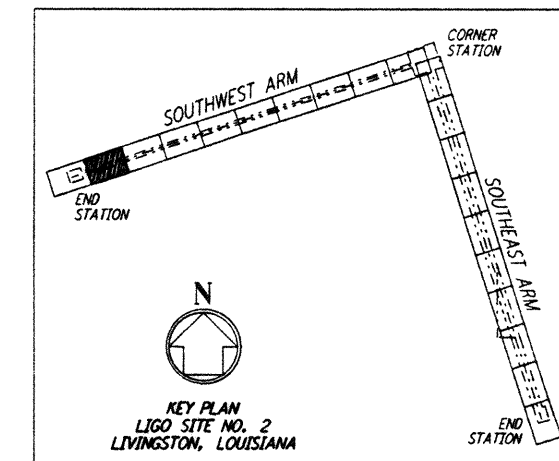
- NOTES:**
- SEE SHEET LA-C-502 FOR GENERAL NOTES, LEGEND AND ABBREVIATIONS.
 - SEE SHEET LA-C-504 FOR TYPICAL SECTIONS AND DETAILS.



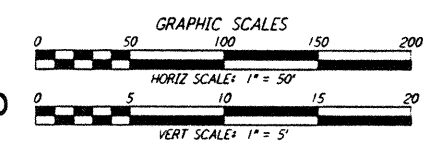
PROFILE
 SCALES: HORIZ: 1" = 50'
 VERT: 1" = 5'



PLAN
 SCALE: 1" = 50'

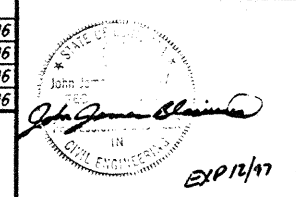


LIGO-D961273-01-0



| NO. | DATE | BY | CHKD | ENGR | PROJ | REVISIONS |
|-----|--------|-----|------|------|------|----------------------------|
| 1 | 2-3-97 | WRB | CL | JJB | TM | REVISED PROFILE ELEVATIONS |

ISSUED FOR CONSTRUCTION
 DRAWN: WRB 11-15-96
 CHECKED: ML 11-15-96
 ENGINEER: JB 11-15-96
 PROJ: TOM 11-15-96



PARSONS
 100 WEST WALNUT STREET
 PASADENA, CALIFORNIA

LIGO
 CALIFORNIA INSTITUTE OF TECHNOLOGY
 MASSACHUSETTS INSTITUTE OF TECHNOLOGY

LASER INTERFEROMETER
 GRAVITATIONAL-WAVE OBSERVATORY
 BEAM TUBE ENCLOSURE - LIVINGSTON, LA

CIVIL
 SOUTHWEST ARM
 PLAN AND PROFILE
 STA 112+00 TO STA 126+00

AS NOTED PPI 50969 8094
LA-C-519

LIGO-D961273-01-0

LIGO-TF3.BDR

This document and the design it covers are the property of PARSONS. They are loaned only with the borrower's expressed written agreement that they will not be reproduced, copied, loaned, exhibited, or used in any other way, except by written consent from PARSONS to the borrower.

FROM PLOT 03 08/24/97 5:57:00Z J:\LIGO\SITE2\CE\LA-C-519.DWG\LA-C-519.PDF