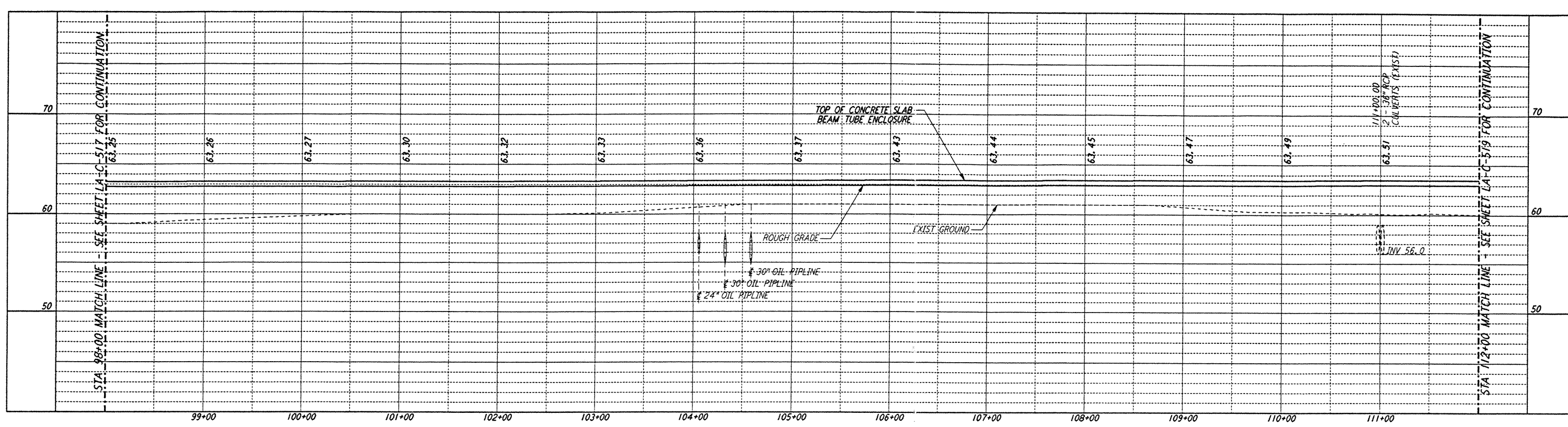
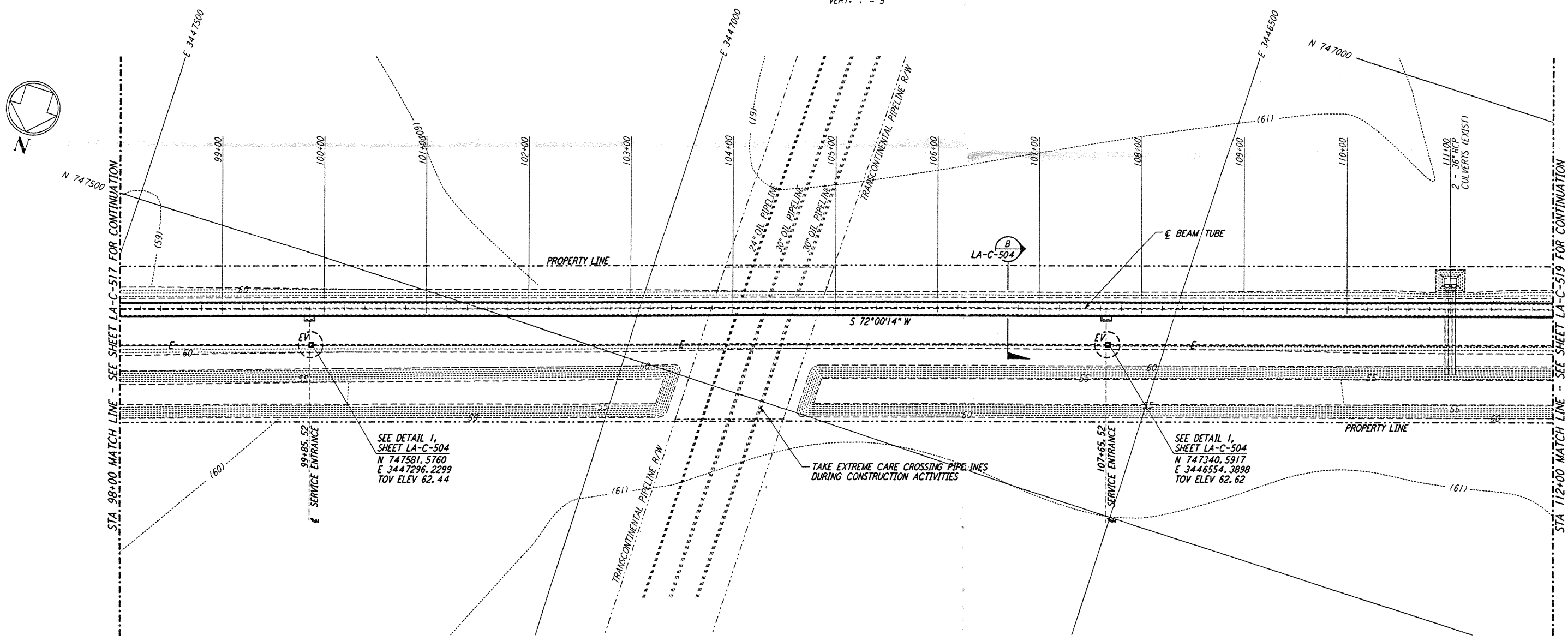


NOTES:
 1. SEE SHEET LA-C-502 FOR GENERAL NOTES, LEGEND AND ABBREVIATIONS.
 2. SEE SHEET LA-C-504 FOR TYPICAL SECTIONS AND DETAILS.

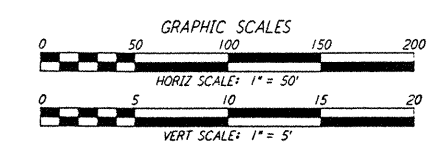
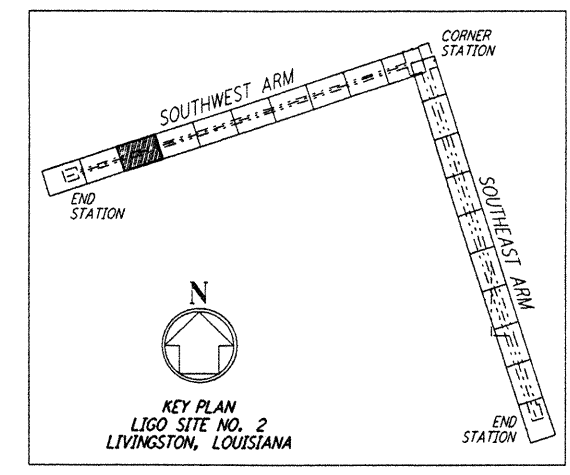


PROFILE
 SCALES: HORIZ: 1" = 50'
 VERT: 1" = 5'



PLAN
 SCALE: 1" = 50'

NOTE:
 LIGO SOUTHWEST ARM CROSSING OF TRANSCONTINENTAL PIPELINE R/W OCCURS WITHIN LIVINGSTON PARRISH, LOUISIANA, TOWNSHIP 6 SOUTH - RANGE 4 EAST, SECTION 4.



not be reproduced, copied, loaned, exhibited, or used in any other way, except by written consent from **PARSONS** to the borrower.

This document and the design it covers are the property of **PARSONS**. They are loaned only with the borrower's expressed written agreement that they will

P001.DWG, 21.0762.0033, 1770, 52.5.0002, 437EFL015AUREUESV098CAL0101PMT

NO.	DATE	BY	CHKD	ENGR	PROJ	DESCRIPTION

ISSUED FOR CONSTRUCTION	
DRAWN	WRB 11-15-96
CHECKED	MC 1-15-96
ENGINEER	JA 4/15/96
PROJ	11/15/96

Signature

PARSONS
 100 WEST WALNUT STREET
 PASADENA, CALIFORNIA

LIGO
 CALIFORNIA INSTITUTE OF TECHNOLOGY,
 MASSACHUSETTS INSTITUTE OF TECHNOLOGY

LASER INTERFEROMETER
 GRAVITATIONAL-WAVE OBSERVATORY
 BEAM TUBE ENCLOSURE - LIVINGSTON, LA

CIVIL
 SOUTHWEST ARM
 PLAN AND PROFILE
 STA 98+00 TO STA 112+00

AS NOTED PPI50969 8094
LA-C-518

LIGO-D961272-00-D | LIGOLF3.BOR