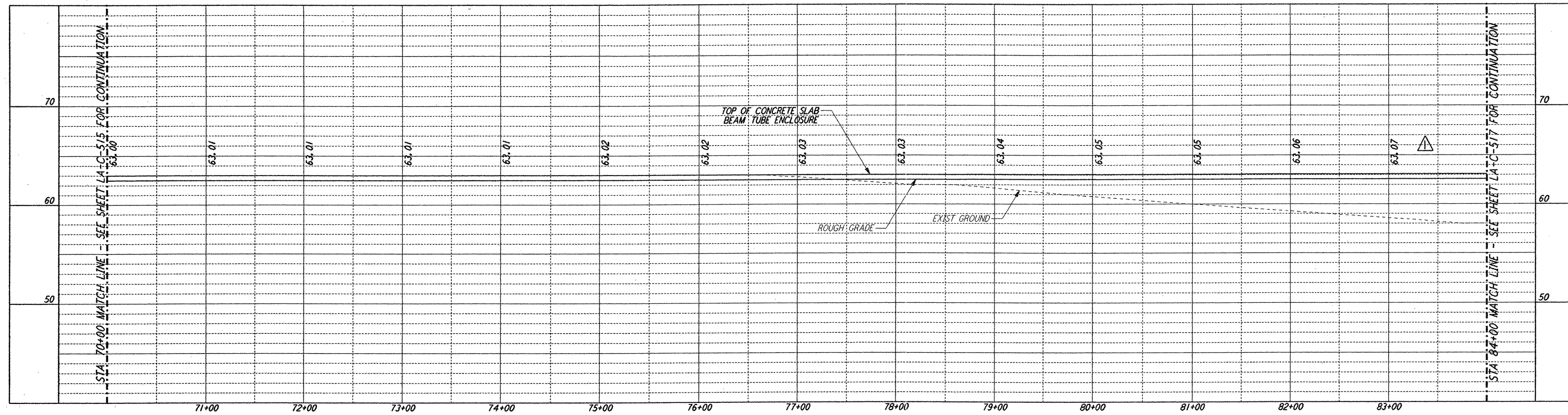


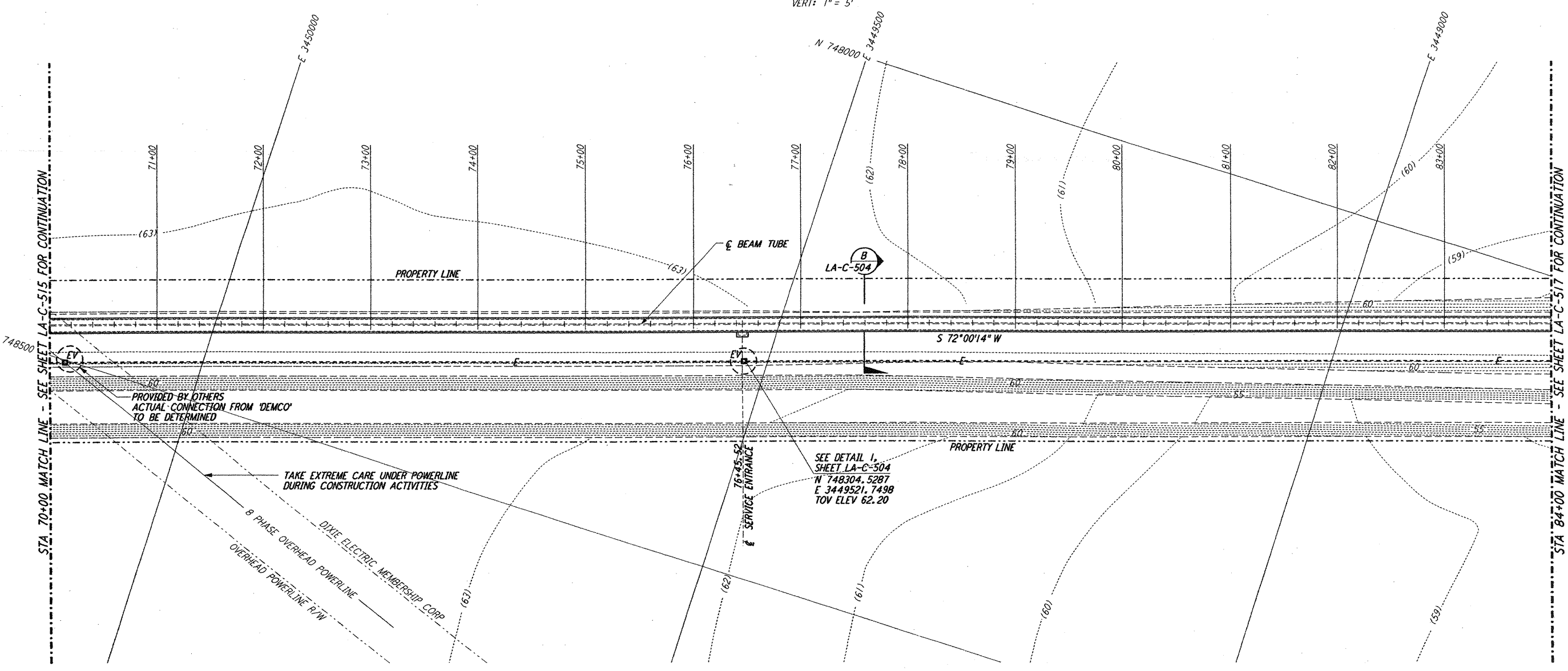
**NOTES:**

- SEE SHEET LA-C-502 FOR GENERAL NOTES, LEGEND AND ABBREVIATIONS.
- SEE SHEET LA-C-504 FOR TYPICAL SECTIONS AND DETAILS.



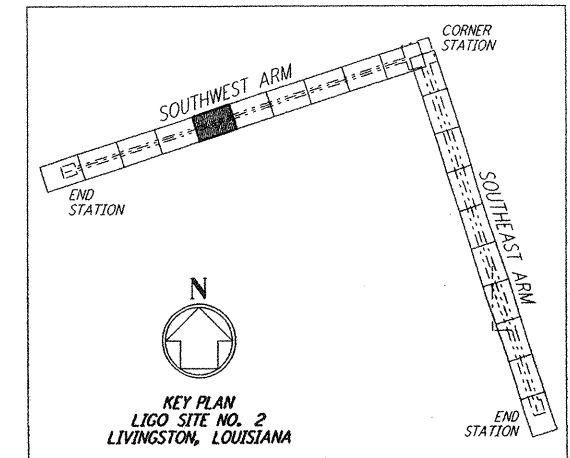
**PROFILE**

SCALES: HORIZ: 1" = 50'  
 VERT: 1" = 5'



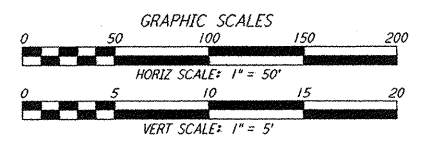
**PLAN**

SCALE: 1" = 50'



KEY PLAN  
 LIGO SITE NO. 2  
 LIVINGSTON, LOUISIANA

**LIGO-D961270-02-0**



NO.	DATE	BY	CHKD	ENGR	PROJ	DESCRIPTION
2	1-15-99	MEI	--	--	MDW	ISSUED FOR AB BUILT
1	2-3-97	WRB	--	--	--	REVISED PROFILE ELEVATIONS

NO.	DATE	BY	CHKD	ENGR	PROJ	DESCRIPTION
ISSUED FOR CONSTRUCTION						
1	11-15-96	WRB	--	--	--	DRAWN
2	11-15-96	ML	--	--	--	CHECKED
3	11-15-96	JB	--	--	--	ENGINEER
4	11-15-96	TDM	--	--	--	PROJ

**AS-BUILT DRAWINGS**

**PARSONS**  
 100 WEST WALNUT STREET  
 PASADENA, CALIFORNIA

**LIGO**  
 CALIFORNIA INSTITUTE OF TECHNOLOGY  
 MASSACHUSETTS INSTITUTE OF TECHNOLOGY

LASER INTERFEROMETER  
 GRAVITATIONAL-WAVE OBSERVATORY  
 BEAM TUBE ENCLOSURE - LIVINGSTON, LA

CIVIL  
 SOUTHWEST ARM  
 PLAN AND PROFILE  
 STA 70+00 TO STA 84+00

AS NOTED PPI 50969 8094  
**LA-C-516**

not be reproduced, copied, loaned, exhibited, or used in any other way, except by written consent from PARSONS to the borrower.

This document and the design it covers are the property of PARSONS. They are loaned only with the borrower's expressed written agreement that they will

1/15/99 15:22:11Z 1999 C:\PLOT\QUE53\H98B2.DCF 52895 K:\P982\ce\B16.dwg LIG01TF3.BDR