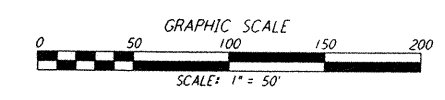
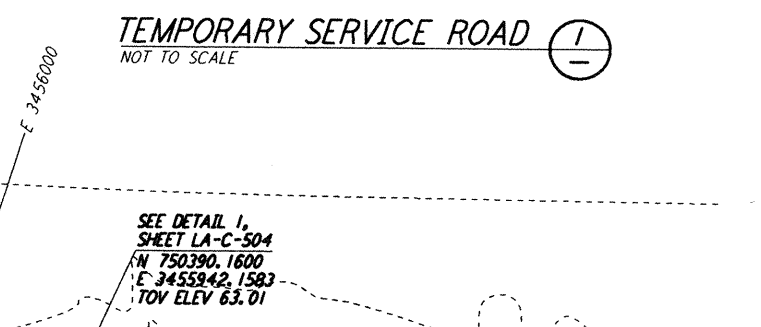
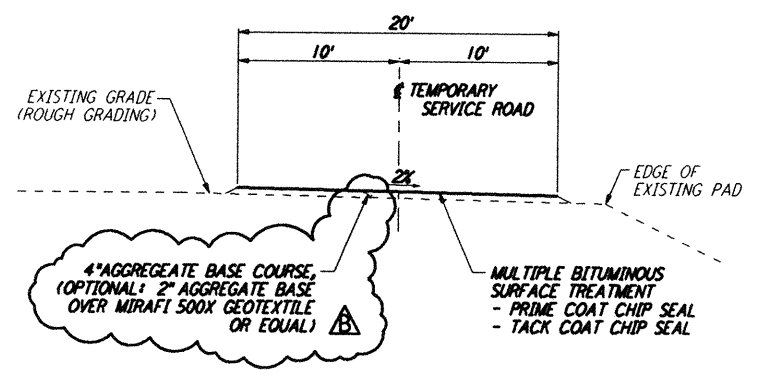
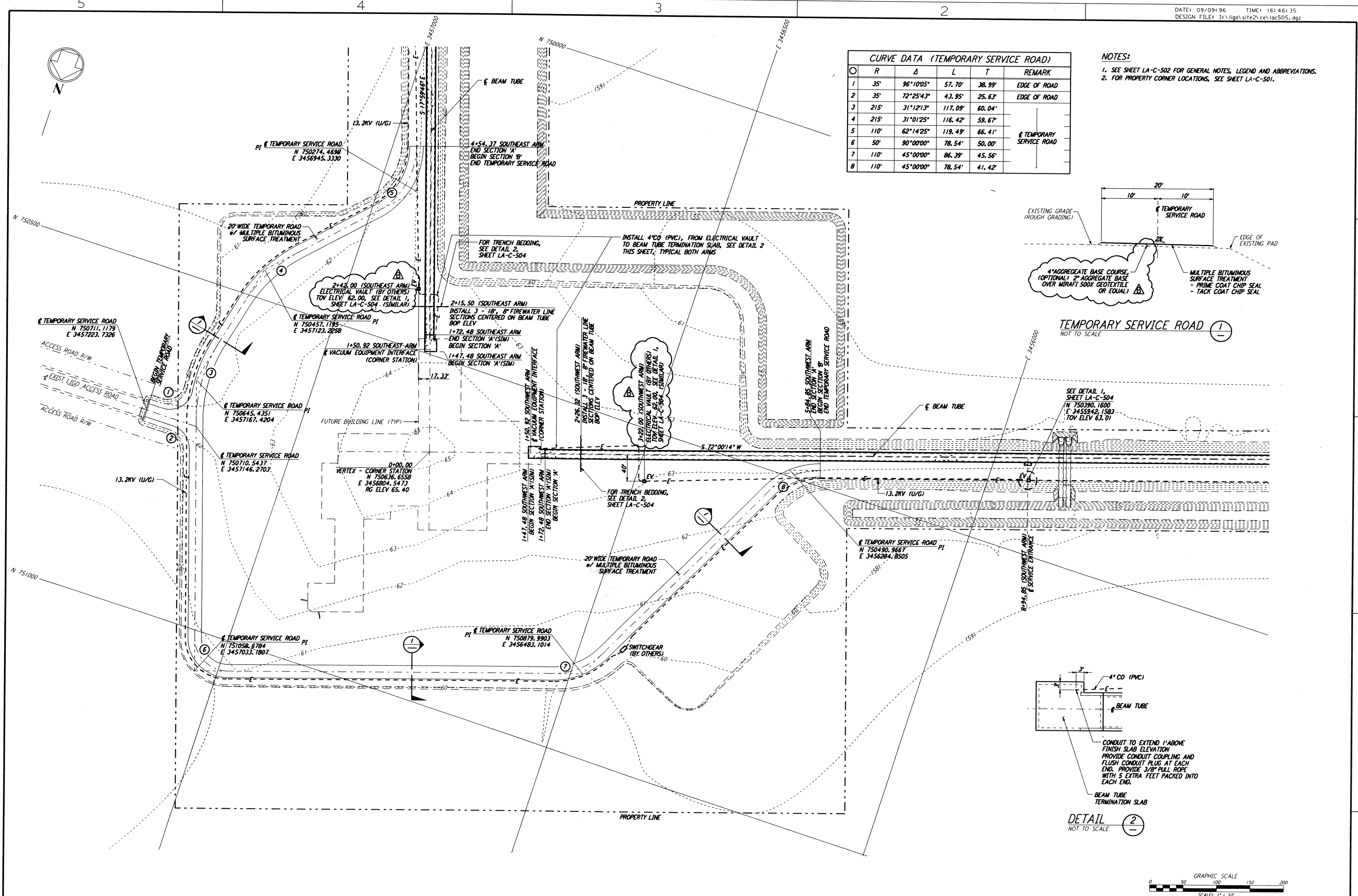


Mon Sep 09 16:45:49 1996 s3-v18b2 J:\PLOTS\QUEUES\18B2\CE505A.PRF

CURVE DATA (TEMPORARY SERVICE ROAD)					
Curve No.	R	Δ	L	T	REMARK
1	35'	96°10'05"	57.70'	38.99'	EDGE OF ROAD
2	35'	72°25'43"	43.95'	25.63'	EDGE OF ROAD
3	215'	31°12'13"	117.09'	60.04'	
4	215'	31°01'25"	116.42'	59.67'	
5	110'	62°14'25"	119.49'	66.41'	TEMPORARY SERVICE ROAD
6	50'	90°00'00"	78.54'	50.00'	
7	110'	45°00'00"	86.39'	45.56'	
8	110'	45°00'00"	78.54'	41.42'	

NOTES:
 1. SEE SHEET LA-C-502 FOR GENERAL NOTES, LEGEND AND ABBREVIATIONS.
 2. FOR PROPERTY CORNER LOCATIONS, SEE SHEET LA-C-501.



NO.	DATE	BY	CHKD	ENGR	PROJ	DESCRIPTION
B	9/10/96	WRB	ML	JB	TDM	BID ADDENDUM NO. 2
A	6/28/96	WRB	ML	JB	TDM	FINAL DESIGN REVIEW

NO.	DATE	BY	CHKD	ENGR	PROJ	DESCRIPTION

DRAWN	WRB	6/24/96
CHECKED		
ENGINEER		
PROJ		

PARSONS
 100 WEST WALNUT STREET
 PASADENA, CALIFORNIA

LIGO
 CALIFORNIA INSTITUTE OF TECHNOLOGY
 MASSACHUSETTS INSTITUTE OF TECHNOLOGY

LASER INTERFEROMETER
 GRAVITATIONAL-WAVE OBSERVATORY
 BEAM TUBE ENCLOSURE - LIVINGSTON, LA

CIVIL
 CORNER STATION
 PLAN

SCALE: 1" = 50'
 CONTRACT NUMBER: PPI50969
 PROJECT NUMBER: 8094

LA-C-505