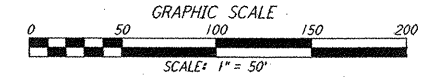
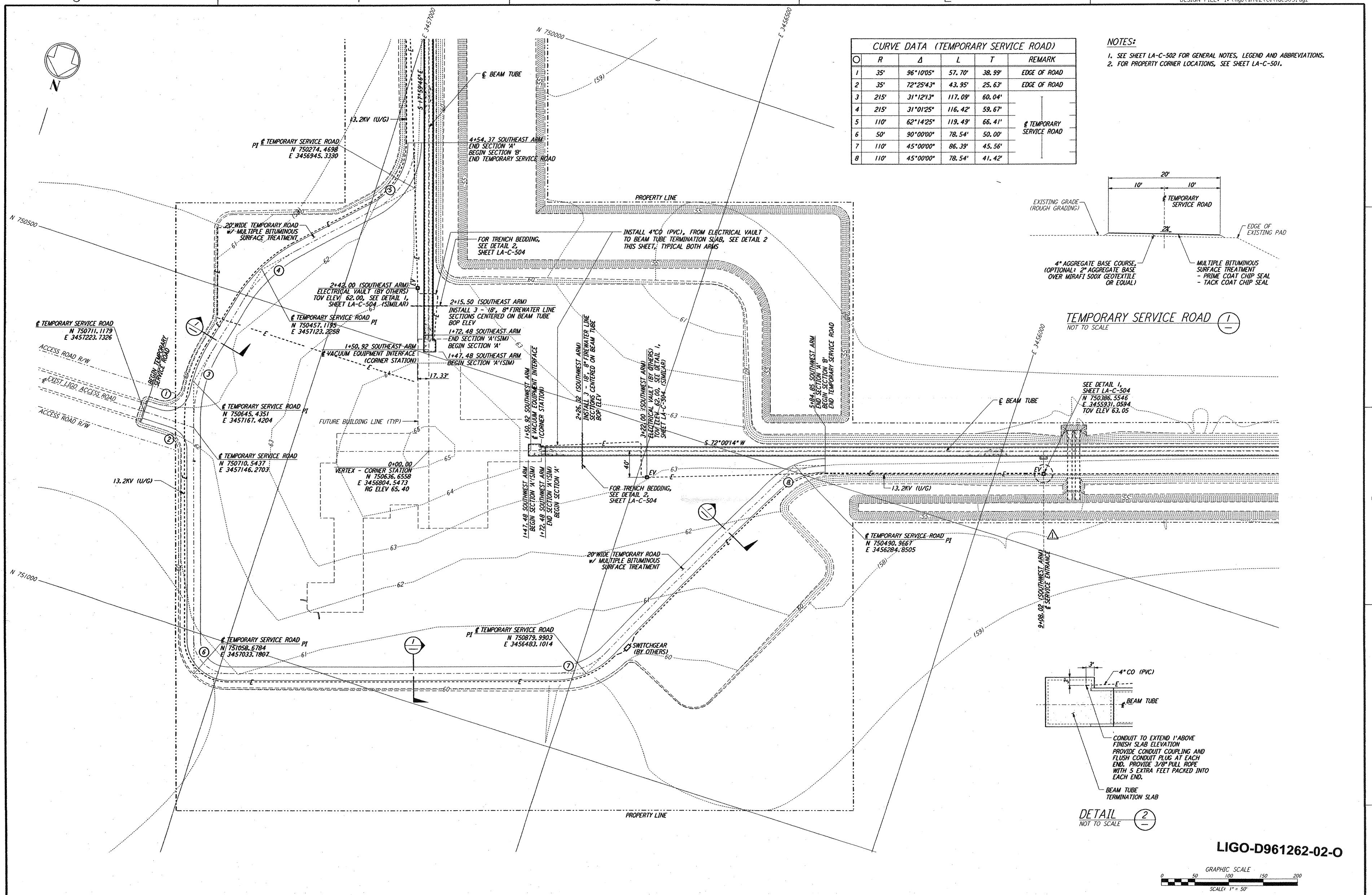
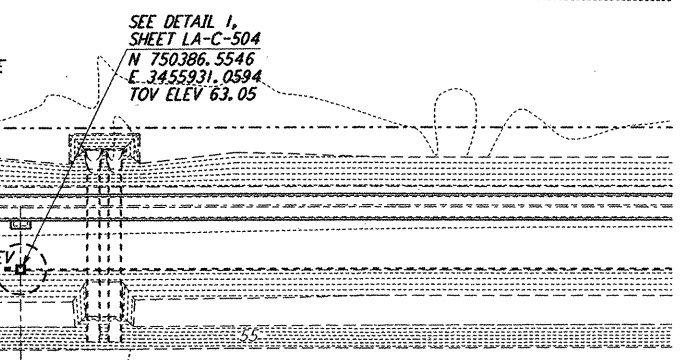
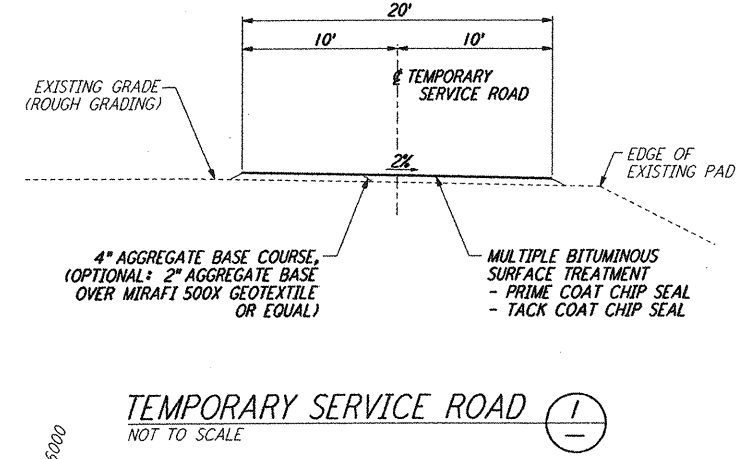


CURVE DATA (TEMPORARY SERVICE ROAD)					
NO	R	Δ	L	T	REMARK
1	35'	96°10'05"	57.70'	38.99'	EDGE OF ROAD
2	35'	72°25'43"	43.95'	25.63'	EDGE OF ROAD
3	215'	31°12'13"	117.09'	60.04'	
4	215'	31°01'25"	116.42'	59.67'	
5	110'	62°14'25"	119.49'	66.41'	TEMPORARY SERVICE ROAD
6	50'	90°00'00"	78.54'	50.00'	
7	110'	45°00'00"	86.39'	45.56'	
8	110'	45°00'00"	78.54'	41.42'	

- NOTES:**
- SEE SHEET LA-C-502 FOR GENERAL NOTES, LEGEND AND ABBREVIATIONS.
 - FOR PROPERTY CORNER LOCATIONS, SEE SHEET LA-C-501.



LIGO-D961262-02-0

NO.	DATE	BY	CHKD	ENGR	PROJ	DESCRIPTION
2	1-15-99	MET			MDW	ISSUED FOR AS-BUILT
1	2-3-97	WRB				REVISED SERVICE ENTRANCE, ELEC VAULT

ISSUED FOR CONSTRUCTION		
DRAWN	WRB	11-15-96
CHECKED	ML	11-15-96
ENGINEER	JB	11-15-96
PROJ	TDM	11-15-96

AS-BUILT DRAWINGS

PARSONS
 100 WEST WALNUT STREET
 PASADENA, CALIFORNIA

LIGO
 CALIFORNIA INSTITUTE OF TECHNOLOGY
 MASSACHUSETTS INSTITUTE OF TECHNOLOGY

LASER INTERFEROMETER
 GRAVITATIONAL-WAVE OBSERVATORY
 BEAM TUBE ENCLOSURE - LIVINGSTON, LA

TITLE	CIVIL CORNER STATION PLAN	SCALE	1" = 50'	CONTRACT NUMBER	PP150969	PROJECT NUMBER	8094
SHEET NUMBER		LA-C-505		REVISIONS			

This document and the design it covers are the property of PARSONS. They are loaned only with the borrower's expressed written agreement that they will not be reproduced, copied, loaned, exhibited, or used in any other way, except by written consent from PARSONS to the borrower.