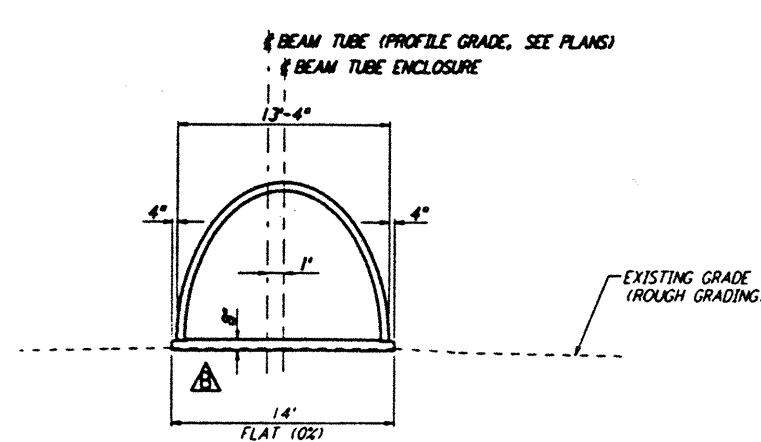


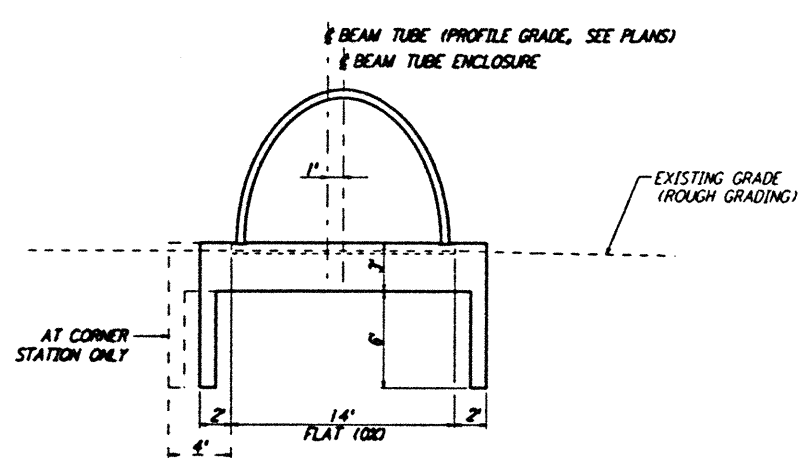
Mon Sep 30 07:37:10 1996 33-V1R12 J:\P1\TS\ML\F1ES\V1R2\VF501A.PRF
 This document and the design it covers are the property of PARSONS. They are loaned only with the borrower's expressed written agreement that they will not be reproduced, copied, loaned, exhibited, or used in any other way, except by written consent from PARSONS to the borrower.



SECTION A
 NOT TO SCALE
 REF: LA-C-504, LA-C-505, LA-C-511, LA-C-515, LA-C-520, LA-C-531, LA-C-535, LA-C-540

SOUTHWEST ARM: STA 1+72.48 THRU STA 5+04.05
 STA 64+90.37 THRU STA 66+02.66
 STA 66+31.83 THRU STA 67+11.70
 STA 126+56.67 THRU STA 130+64.05

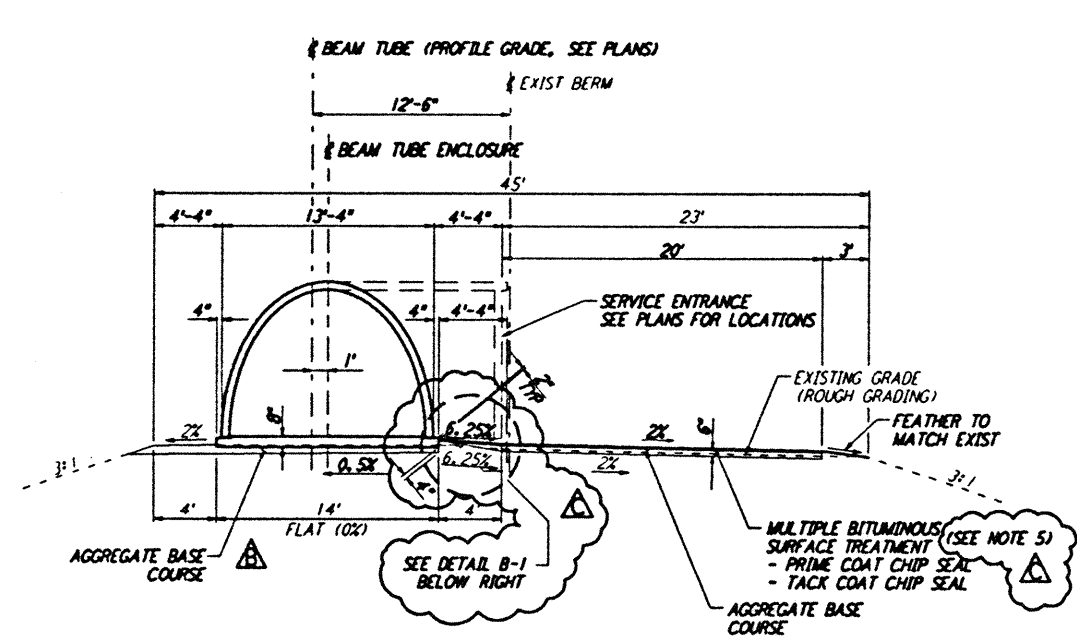
SOUTHEAST ARM: STA 1+72.48 THRU STA 4+54.37
 STA 64+90.37 THRU STA 66+02.66
 STA 66+31.83 THRU STA 67+11.70
 STA 126+56.67 THRU STA 130+64.05



SECTION A (SIM)
 NOT TO SCALE
 REF: LA-C-504, LA-C-505, LA-C-511, LA-C-520, LA-C-531, LA-C-540

SOUTHWEST ARM: STA 1+47.48 THRU STA 1+72.48
 STA 130+64.05 THRU STA 130+89.05

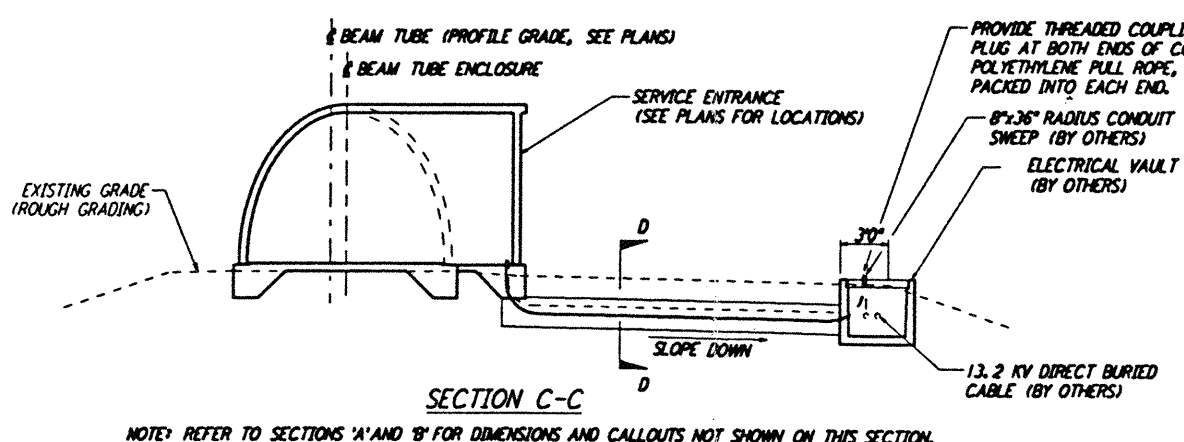
SOUTHEAST ARM: STA 1+47.48 THRU STA 1+72.48
 STA 130+64.05 THRU STA 130+89.05



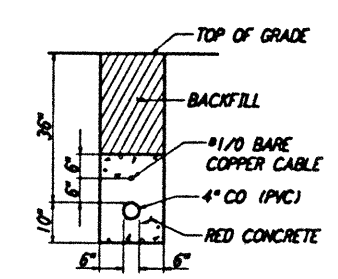
SECTION B
 NOT TO SCALE
 REF: LA-C-504, LA-C-505, LA-C-511 THRU LA-C-520, LA-C-531 THRU LA-C-540

SOUTHWEST ARM: STA 5+04.05 THRU STA 64+90.37
 STA 67+11.70 THRU STA 126+56.67

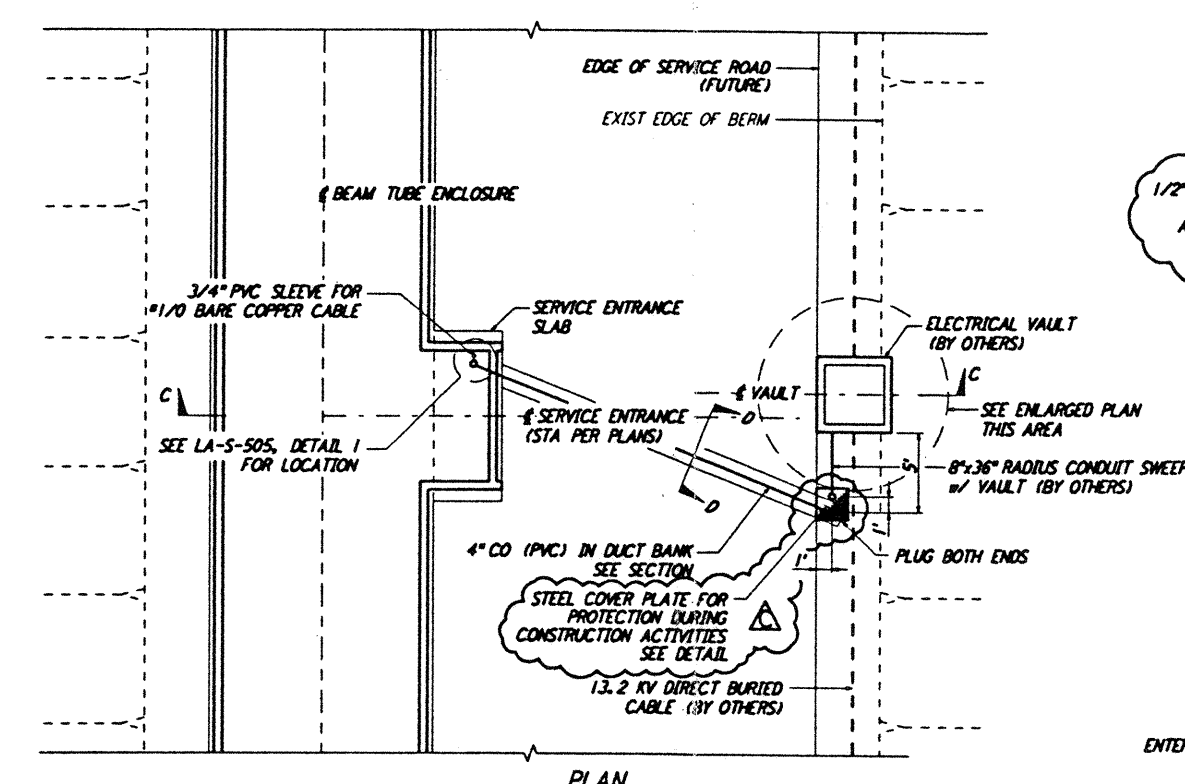
SOUTHEAST ARM: STA 4+54.37 THRU STA 64+90.37
 STA 67+11.70 THRU STA 126+56.67



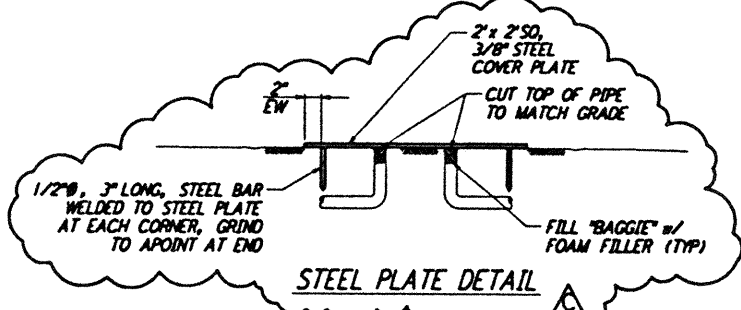
SECTION C-C
 NOTE: REFER TO SECTIONS 'A' AND 'B' FOR DIMENSIONS AND CALLOUTS NOT SHOWN ON THIS SECTION.



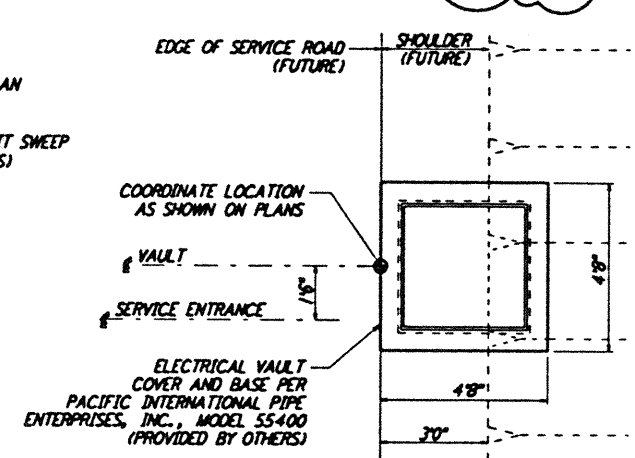
SECTION D-D



TYPICAL LOCATION PLAN @ SERVICE ENTRANCE FOR ELECTRICAL VAULT
 NOT TO SCALE

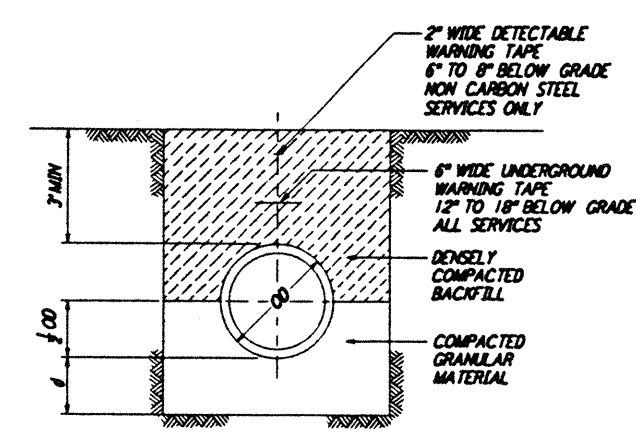


STEEL PLATE DETAIL



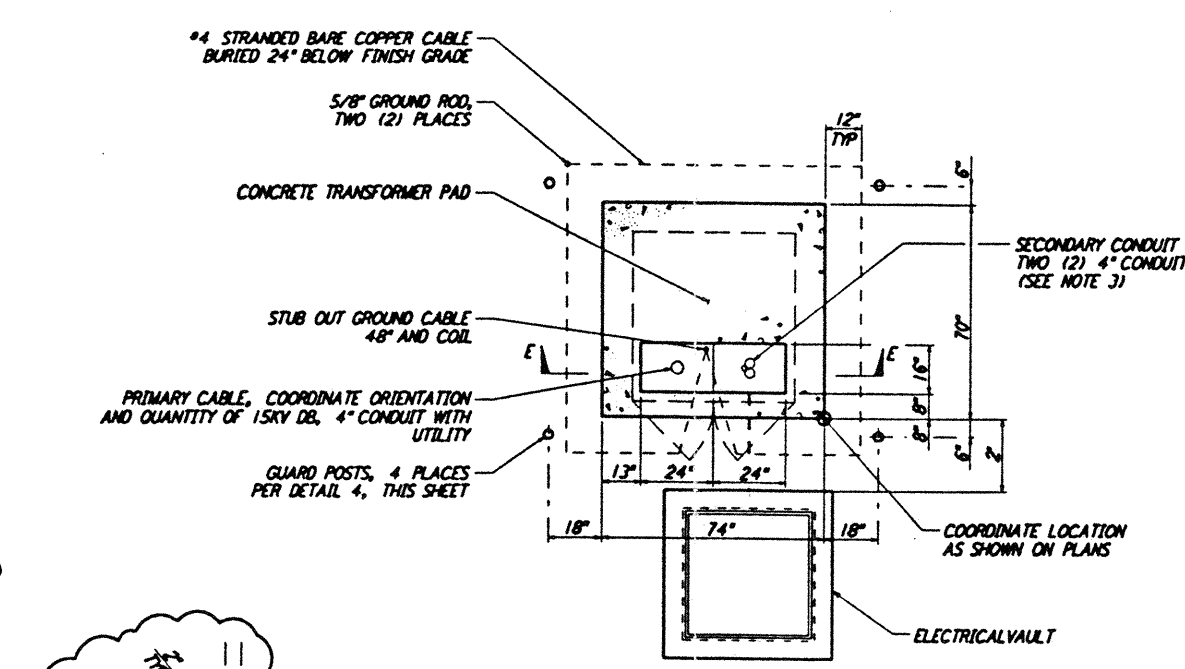
ENLARGED PLAN @ VAULT

- NOTES:**
- SEE SHEET LA-C-502 FOR GENERAL NOTES, LEGEND AND ABBREVIATIONS.
 - FOR SOUTHEAST ARM, SECTIONS 'A' AND 'A(SIM)' ARE MIRRORRED ABOUT THE BEAM TUBE CENTERLINE.
 - SECONDARY CONDUIT DIRECTION SHALL FACE END STATION, AS APPROPRIATE.
 - CONDUITS SHALL EXTEND TOWARD BUILDING VIA DUCT BANK, DETAIL 4, THIS SHEET.
 - BITUMINOUS SURFACE TREATMENT TO BE APPLIED WHEN SCHEDULED BY THE CONSTRUCTION MANAGER.

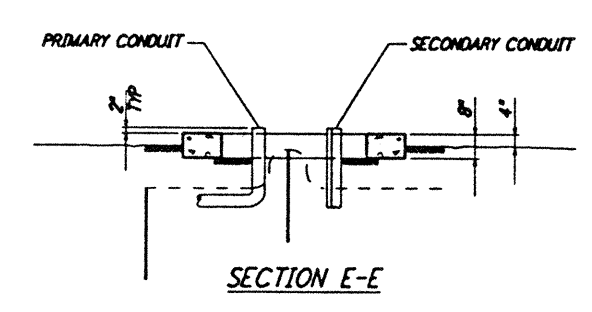


DEPTH OF BEDDING MATERIAL BELOW PIPE	
ID	#(MIN)
2" & SMALLER	3"

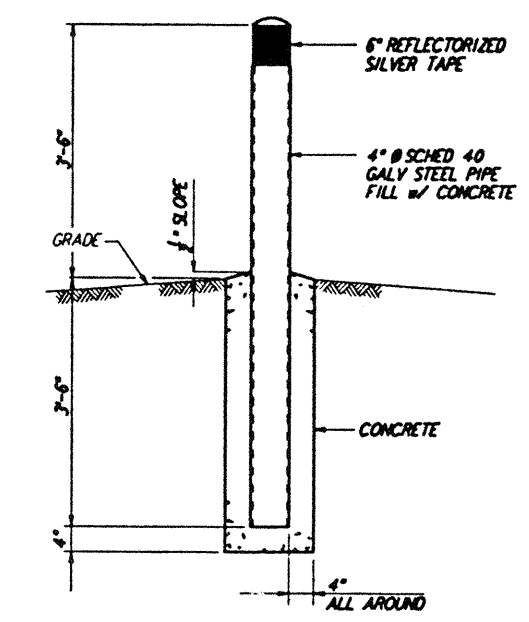
TRENCH BEDDING
 NOT TO SCALE



TYPICAL LOCATION PLAN FOR ELECTRICAL TRANSFORMER PAD
 NOT TO SCALE



SECTION E-E



GUARD POST
 NOT TO SCALE

NO.	DATE	BY	CHK'D	ENGR	PROJ	DESCRIPTION
C	9/27/96	WRB	ML	JL	TDM	BID ADDENDUM NO. 3
B	9/10/96	WRB	ML	JB	TDM	BID ADDENDUM NO. 2
A	6/28/96	WRB	ML	JB	TDM	FINAL DESIGN REVIEW

DRAWN	WRB	6/24/96
CHECKED		
ENGINEER		
PROJ		

PARSONS
 100 WEST WALNUT STREET
 PASADENA, CALIFORNIA

LIGO
 CALIFORNIA INSTITUTE OF TECHNOLOGY
 MASSACHUSETTS INSTITUTE OF TECHNOLOGY

LASER INTERFEROMETER
 GRAVITATIONAL-WAVE OBSERVATORY
 BEAM TUBE ENCLOSURE - LIVINGSTON, LA

TITLE	CIVIL TYPICAL SECTIONS AND DETAILS	SCALE	NONE	CONTRACT NUMBER	PP150969	PROJECT NUMBER	8094
LA-C-504		SHEET NUMBER		DRAWING NO.		LIGO-D961261-C-E-1	