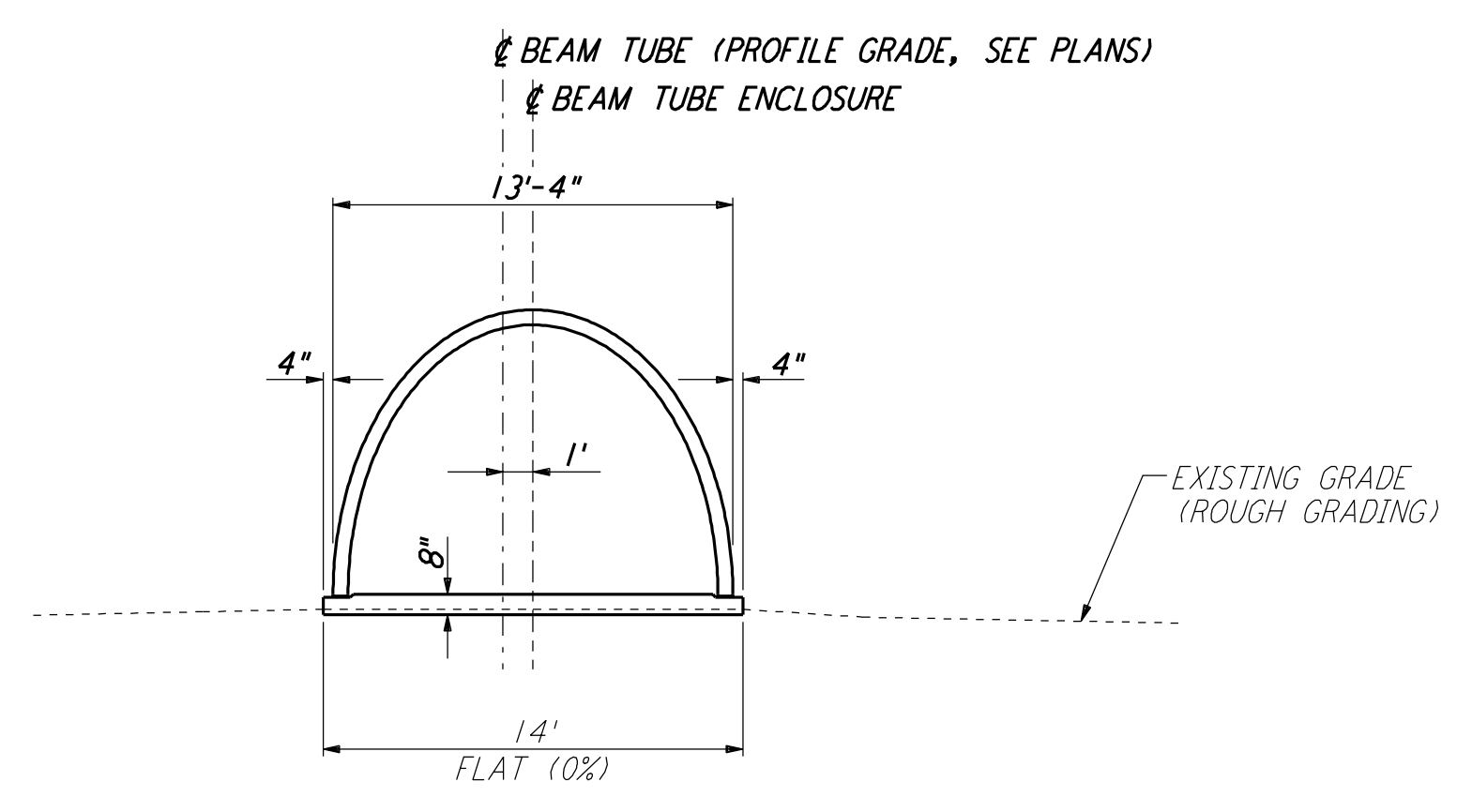
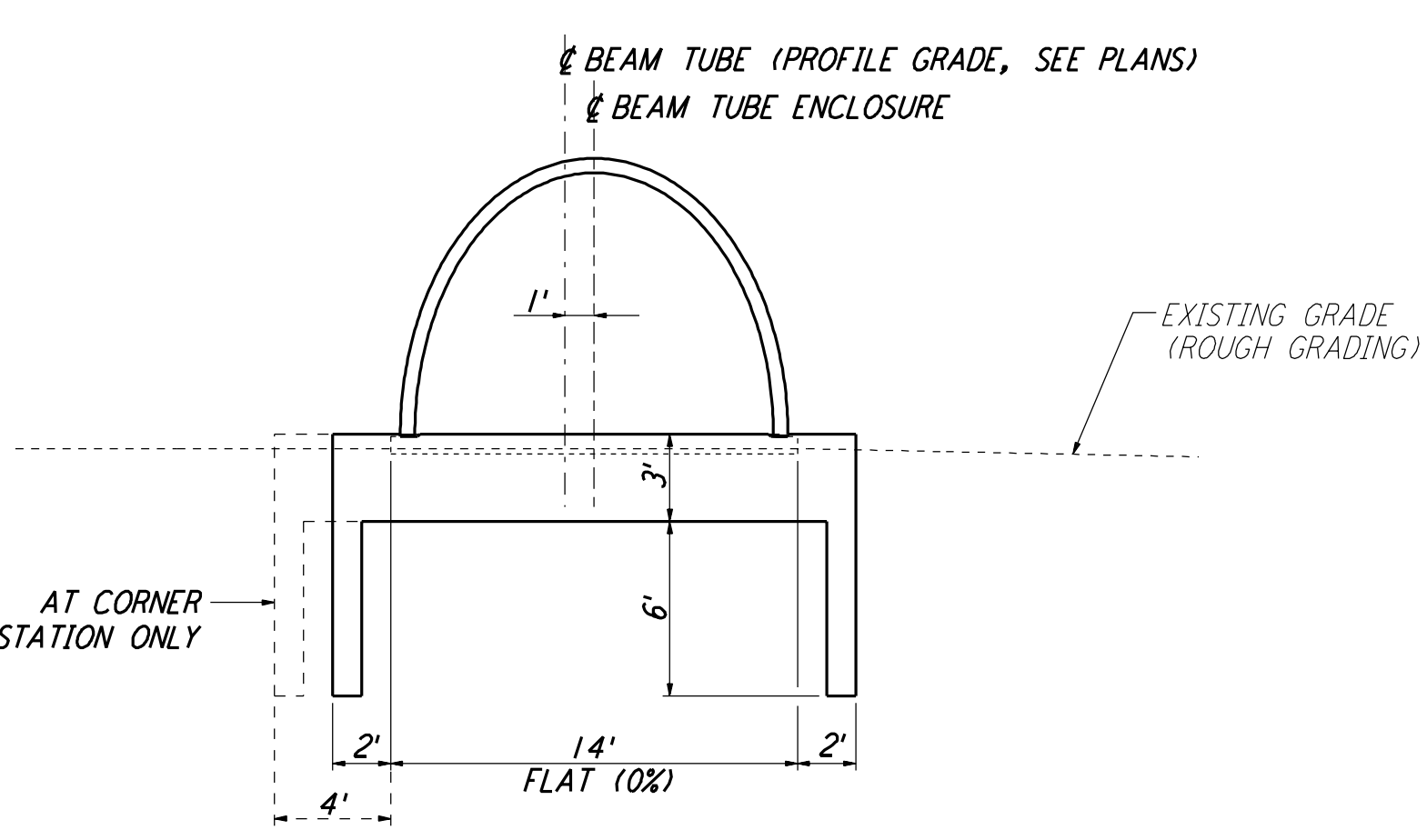
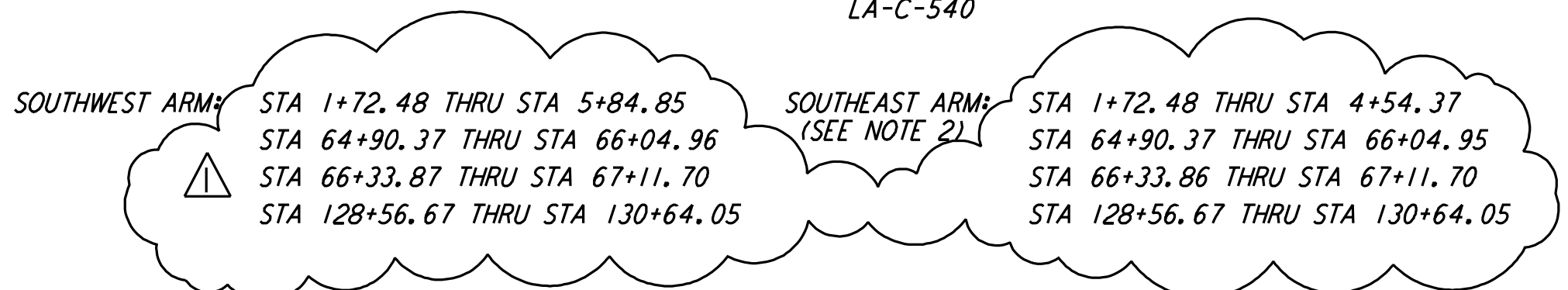


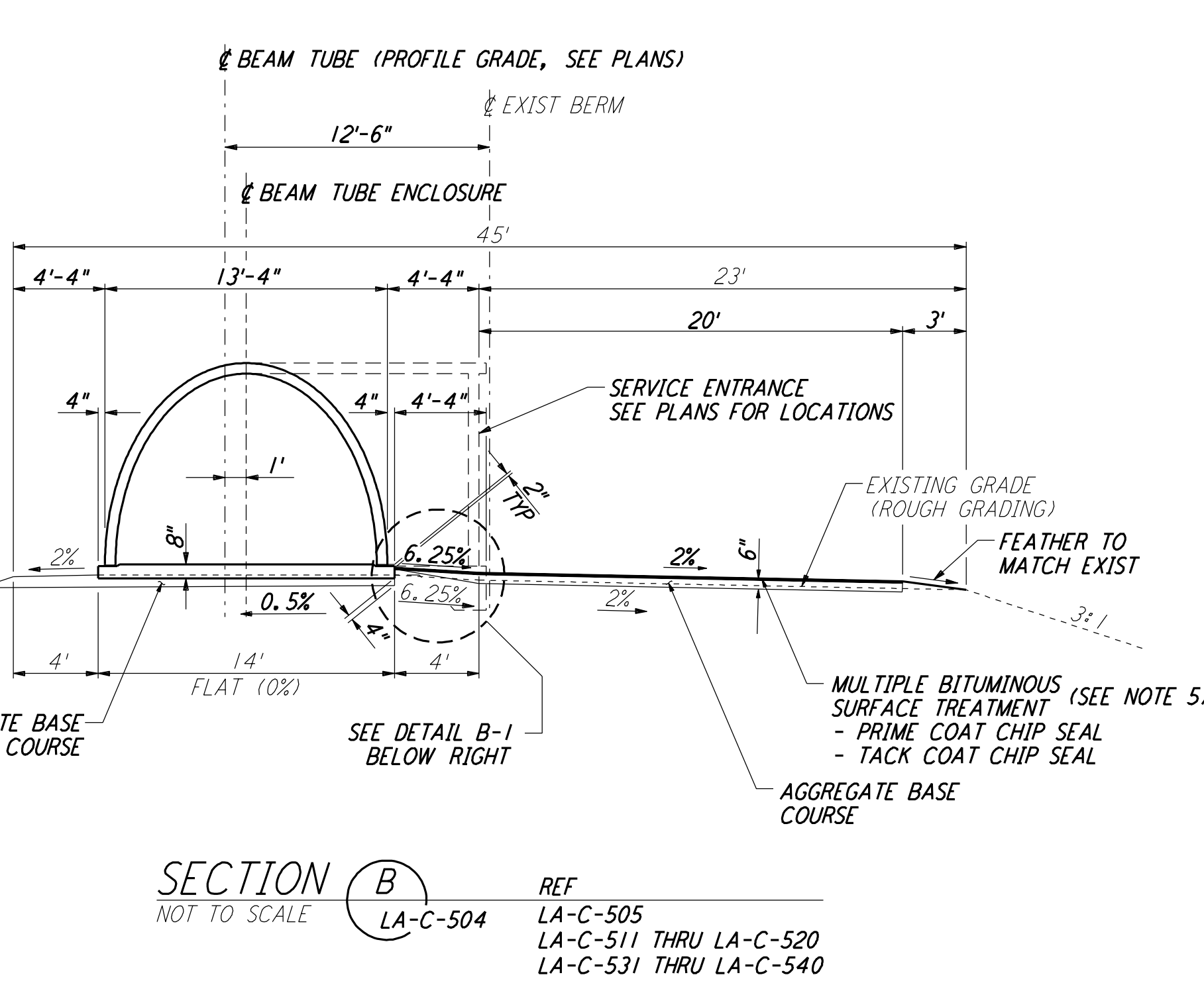
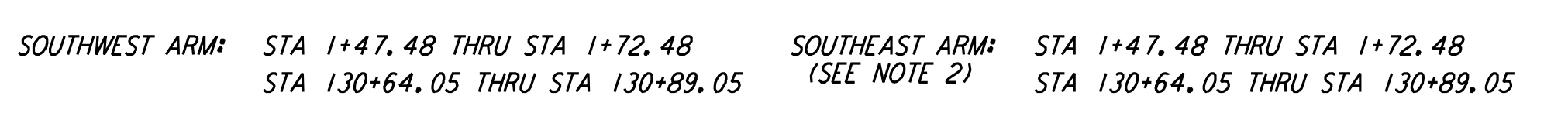
This document and the design it covers are the property of PARSONS. They are loaned only with the borrower's expressed written agreement that they will not be reproduced, copied, loaned, exhibited, or used in any other way, except by written consent from PARSONS to the borrower.



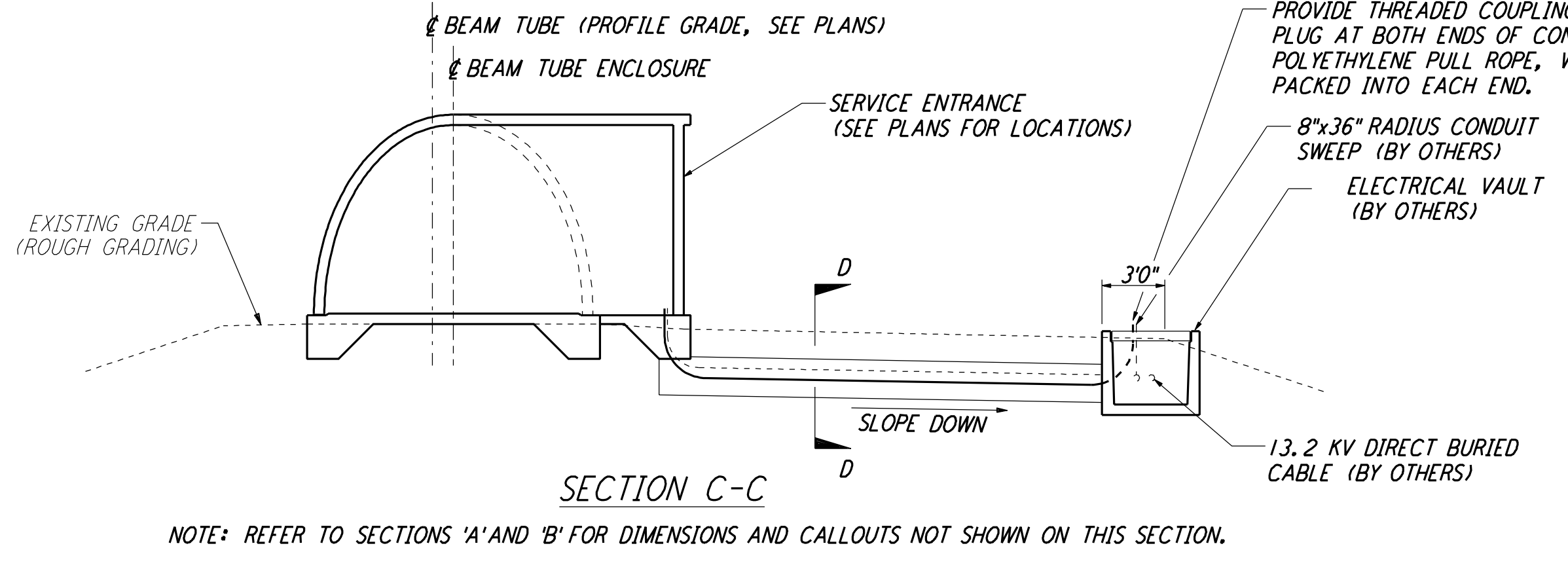
**SECTION A**  
 NOT TO SCALE  
 REF: LA-C-505, LA-C-511, LA-C-515, LA-C-520, LA-C-531, LA-C-540



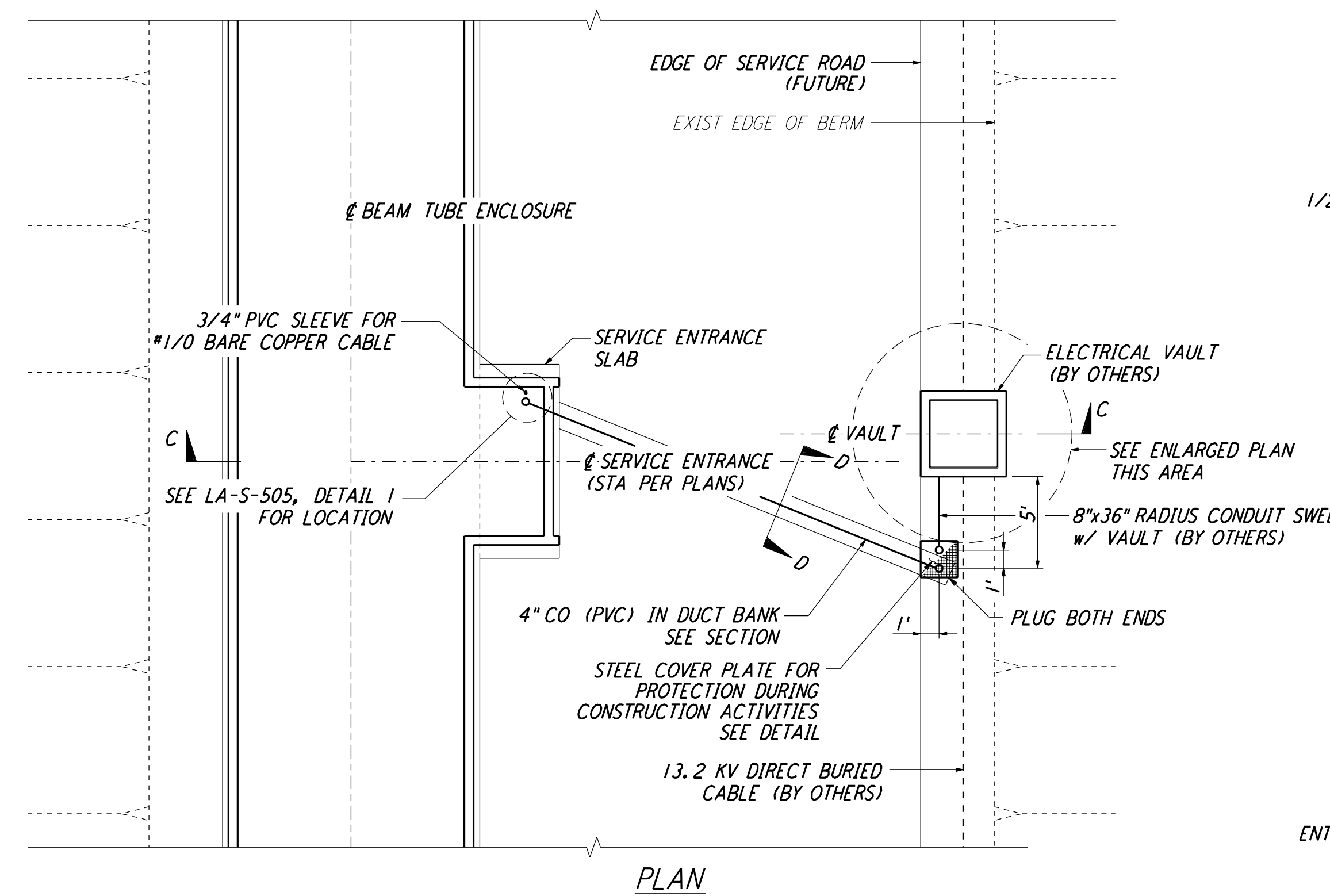
**SECTION A (SIM)**  
 NOT TO SCALE  
 REF: LA-C-505, LA-C-511, LA-C-520, LA-C-531, LA-C-540



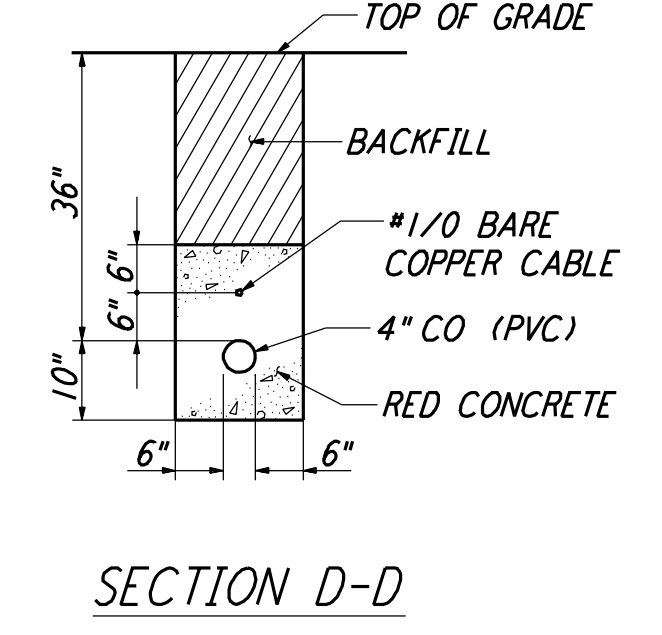
**SECTION B**  
 NOT TO SCALE  
 REF: LA-C-505, LA-C-511 THRU LA-C-520, LA-C-531 THRU LA-C-540



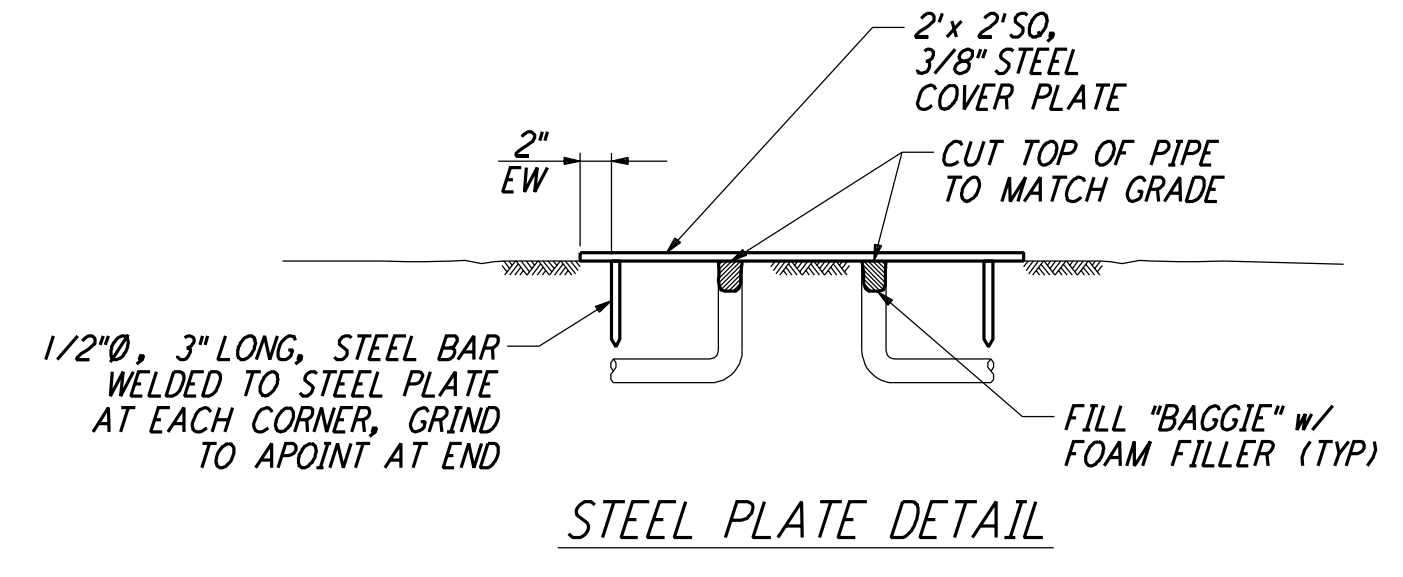
**SECTION C-C**  
 NOTE: REFER TO SECTIONS 'A' AND 'B' FOR DIMENSIONS AND CALLOUTS NOT SHOWN ON THIS SECTION.



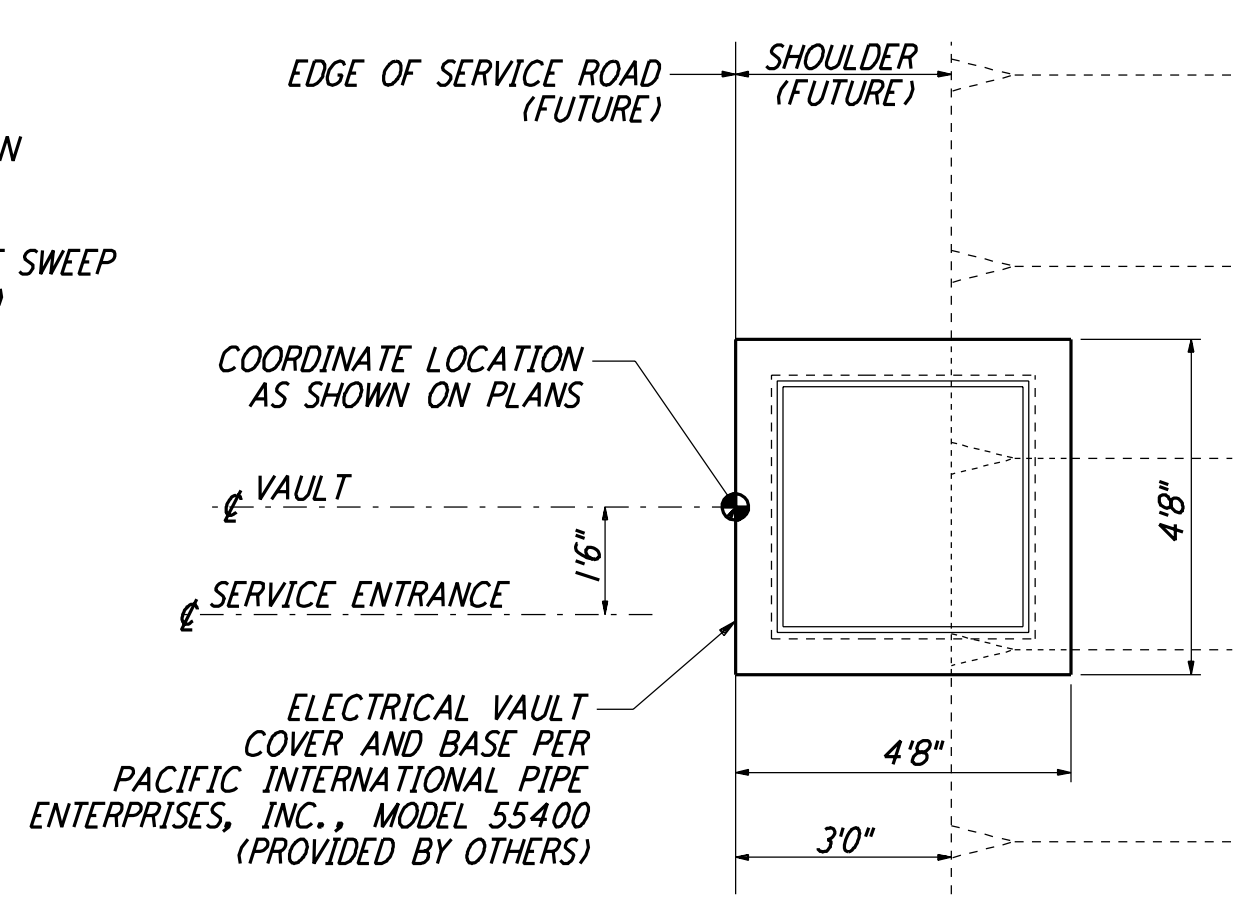
**TYPICAL LOCATION PLAN @ SERVICE ENTRANCE FOR ELECTRICAL VAULT**  
 NOT TO SCALE



**SECTION D-D**



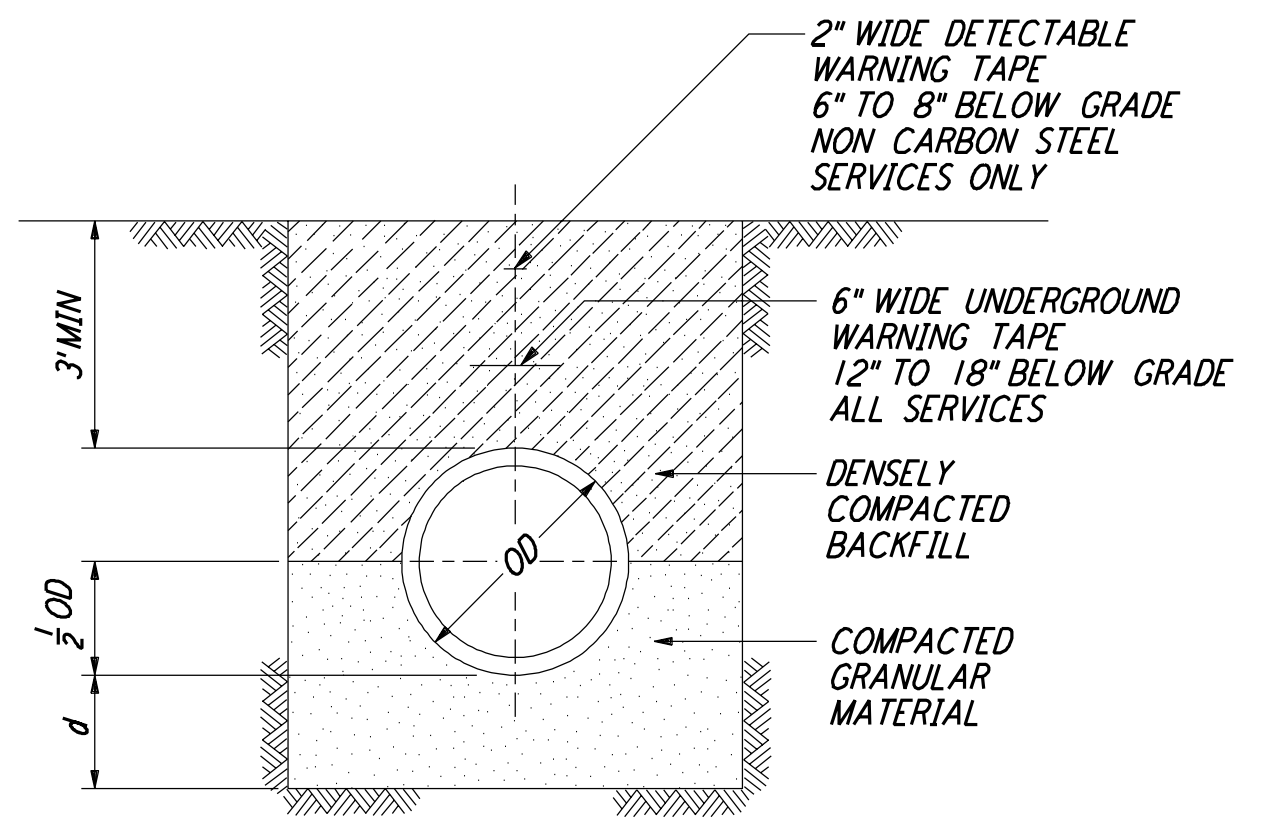
**STEEL PLATE DETAIL**



**ENLARGED PLAN @ VAULT**

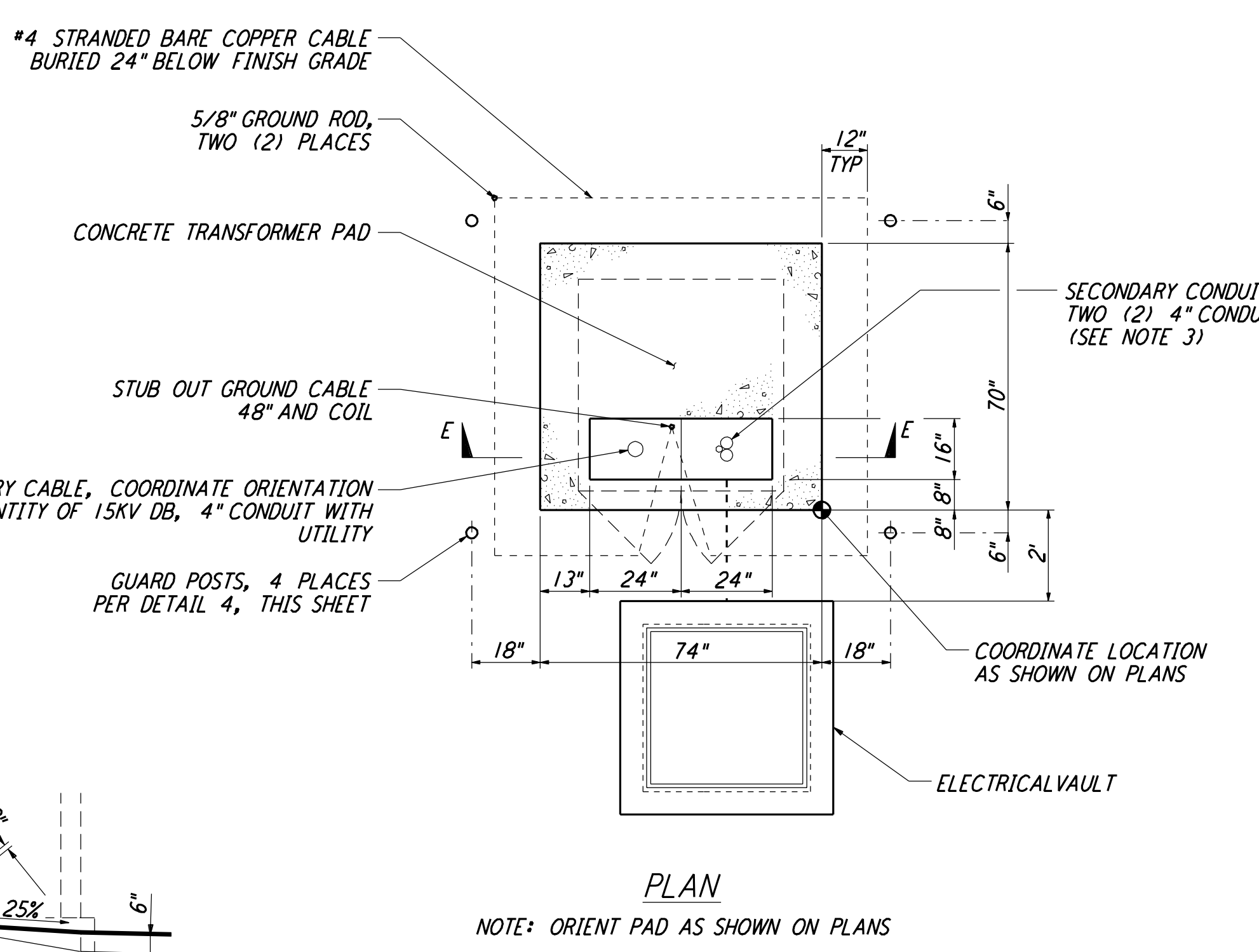
**NOTES:**

- SEE SHEET LA-C-502 FOR GENERAL NOTES, LEGEND AND ABBREVIATIONS.
- FOR SOUTHEAST ARM, SECTIONS 'A' AND 'A (SIM)' ARE MIRRORED ABOUT THE BEAM TUBE CENTERLINE.
- SECONDARY CONDUIT DIRECTION SHALL FACE END STATION, AS APPROPRIATE.
- CONDUITS SHALL EXTEND TOWARD BUILDING VIA DUCT BANK, DETAIL 4, THIS SHEET.
- BITUMINOUS SURFACE TREATMENT TO BE APPLIED WHEN SCHEDULED BY THE CONSTRUCTION MANAGER.

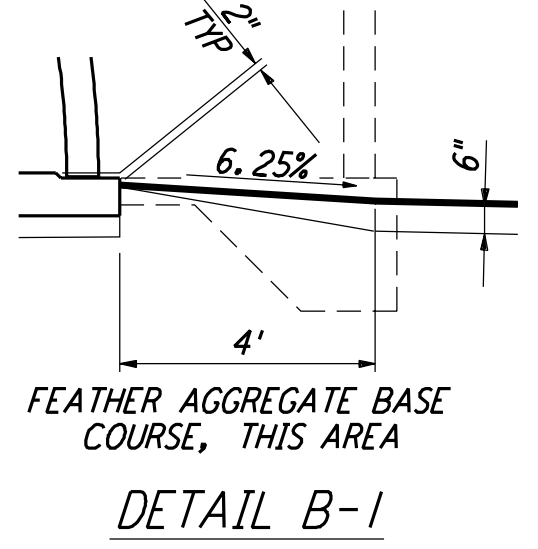


DEPTH OF BEDDING MATERIAL BELOW PIPE	
ID	d(MIN)
27" & SMALLER	3"

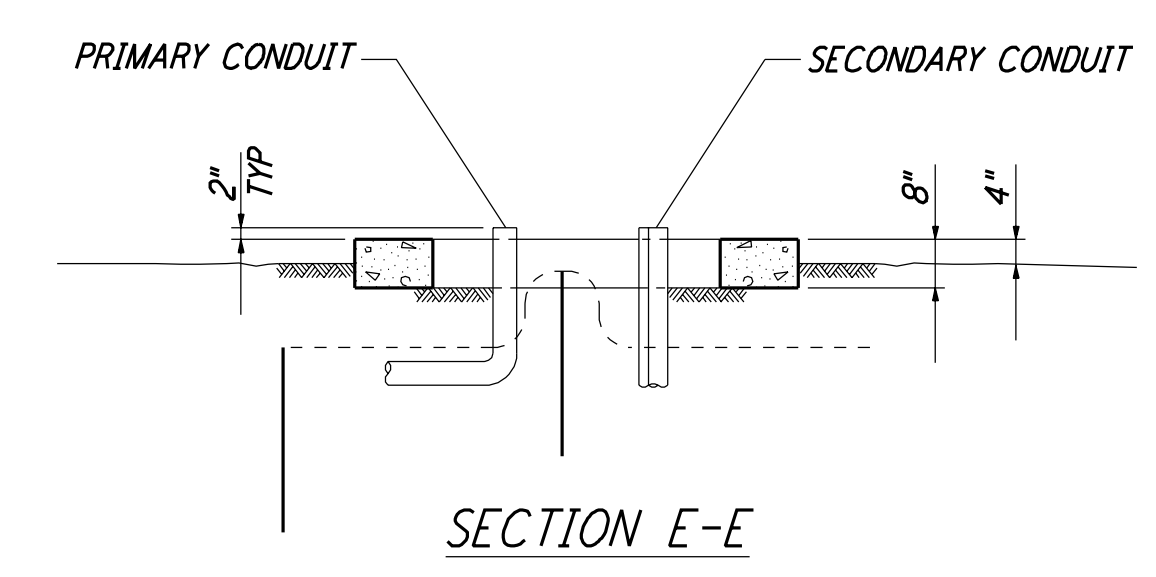
**TRENCH BEDDING**  
 NOT TO SCALE



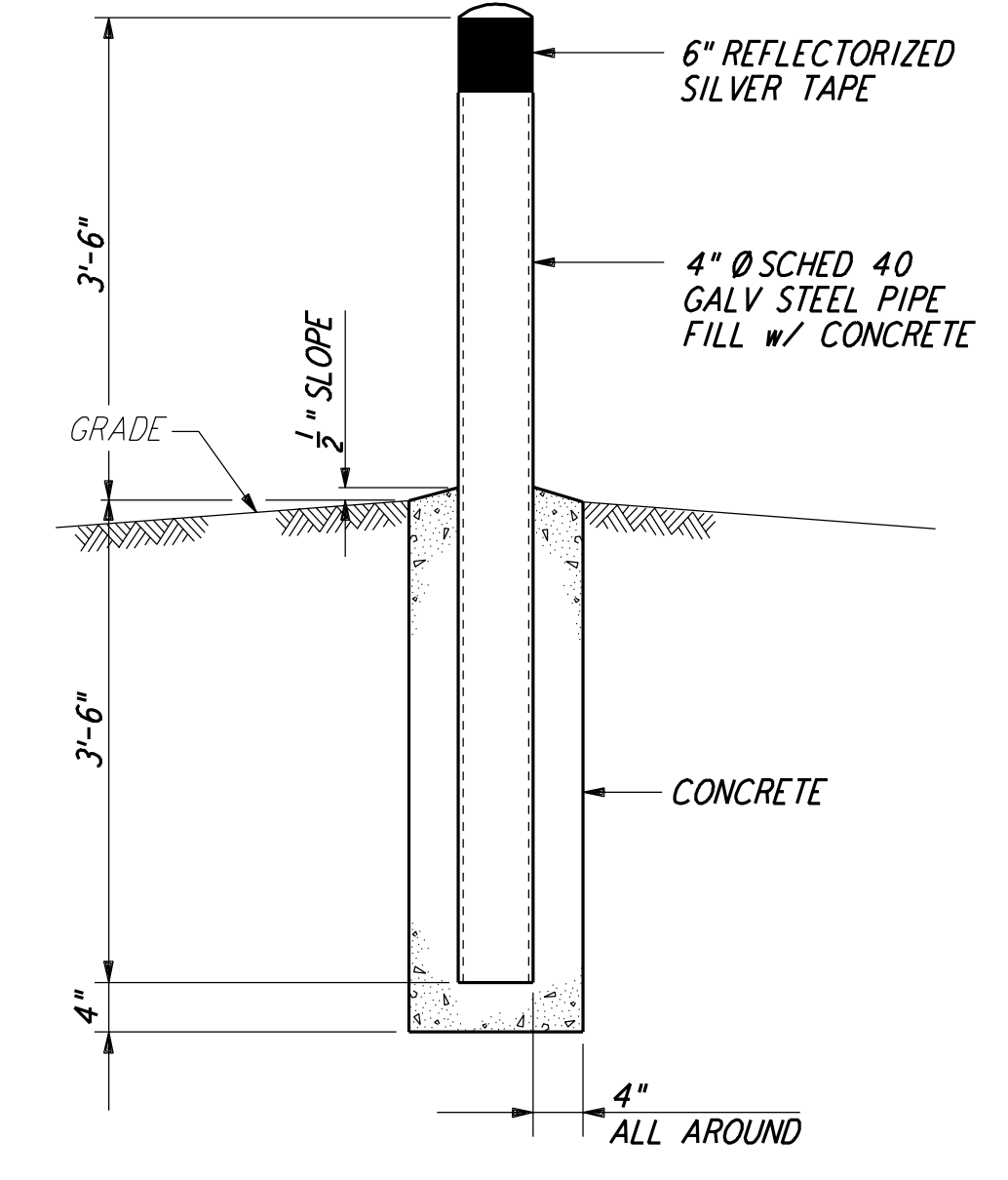
**TYPICAL LOCATION PLAN FOR ELECTRICAL TRANSFORMER PAD**  
 NOT TO SCALE



**DETAIL B-1**



**SECTION E-E**



**GUARD POST**  
 NOT TO SCALE

NO.	DATE	BY	CHKD	ENGR	PROJ	DESCRIPTION
1	3-20-97	WRB				REVISED STATIONS - SECTION A

ISSUED FOR CONSTRUCTION		
DRAWN	WRB	11-15-96
CHECKED	ML	11-15-96
ENGINEER	JB	11-15-96
PROJ	TDM	11-15-96

**PARSONS**  
 100 WEST WALNUT STREET  
 PASADENA, CALIFORNIA

**LIGO**  
 CALIFORNIA INSTITUTE OF TECHNOLOGY  
 MASSACHUSETTS INSTITUTE OF TECHNOLOGY

**LIGO-D961261-01-0**  
 LASER INTERFEROMETER  
 GRAVITATIONAL-WAVE OBSERVATORY  
 BEAM TUBE ENCLOSURE - LIVINGSTON, LA

TITLE	SCALE	CONTRACT NUMBER	PROJECT NUMBER
CIVIL TYPICAL SECTIONS AND DETAILS	NONE	PP150969	8094
SHEET NUMBER		REVISIONS	
<b>LA-C-504</b>			