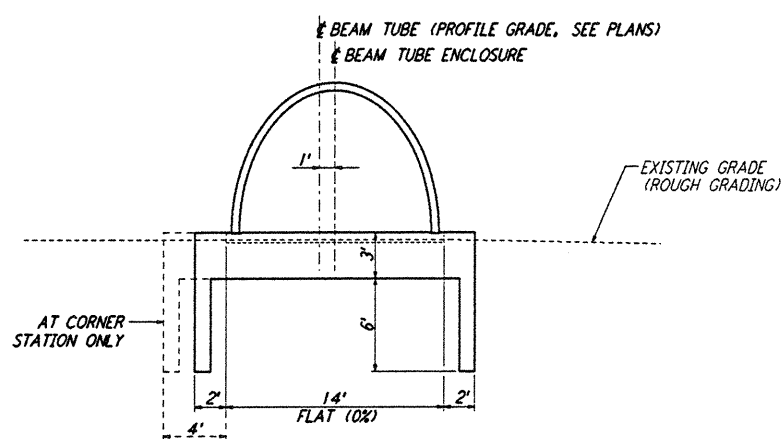


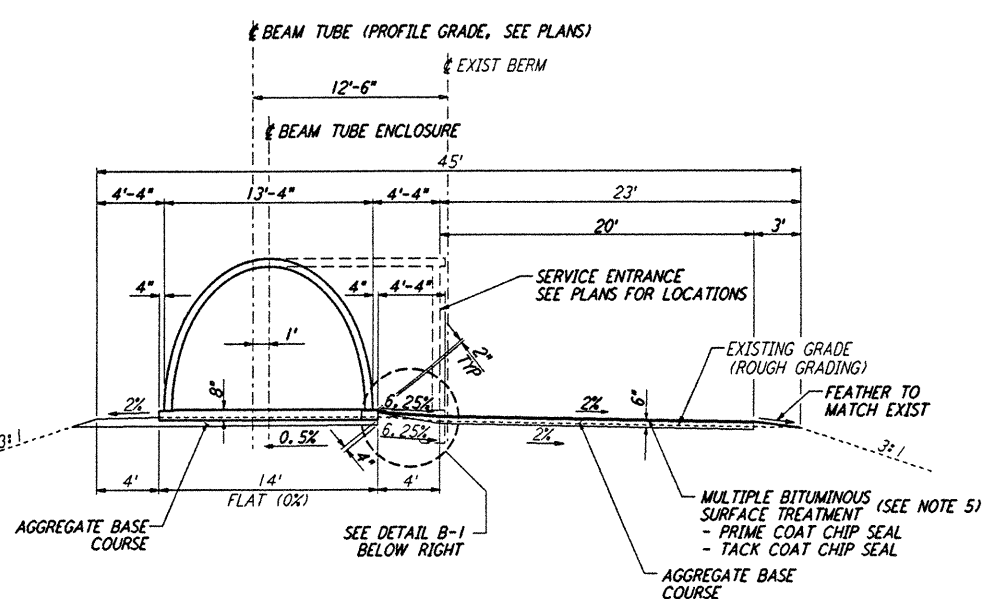
SOUTHWEST ARM: STA 1+72.48 THRU STA 5+84.85
STA 64+90.37 THRU STA 66+02.66
STA 66+31.83 THRU STA 67+11.70
STA 128+56.67 THRU STA 130+64.05

SOUTHEAST ARM: STA 1+72.48 THRU STA 4+54.37
STA 64+90.37 THRU STA 66+02.66
STA 66+31.83 THRU STA 67+11.70
STA 128+56.67 THRU STA 130+64.05



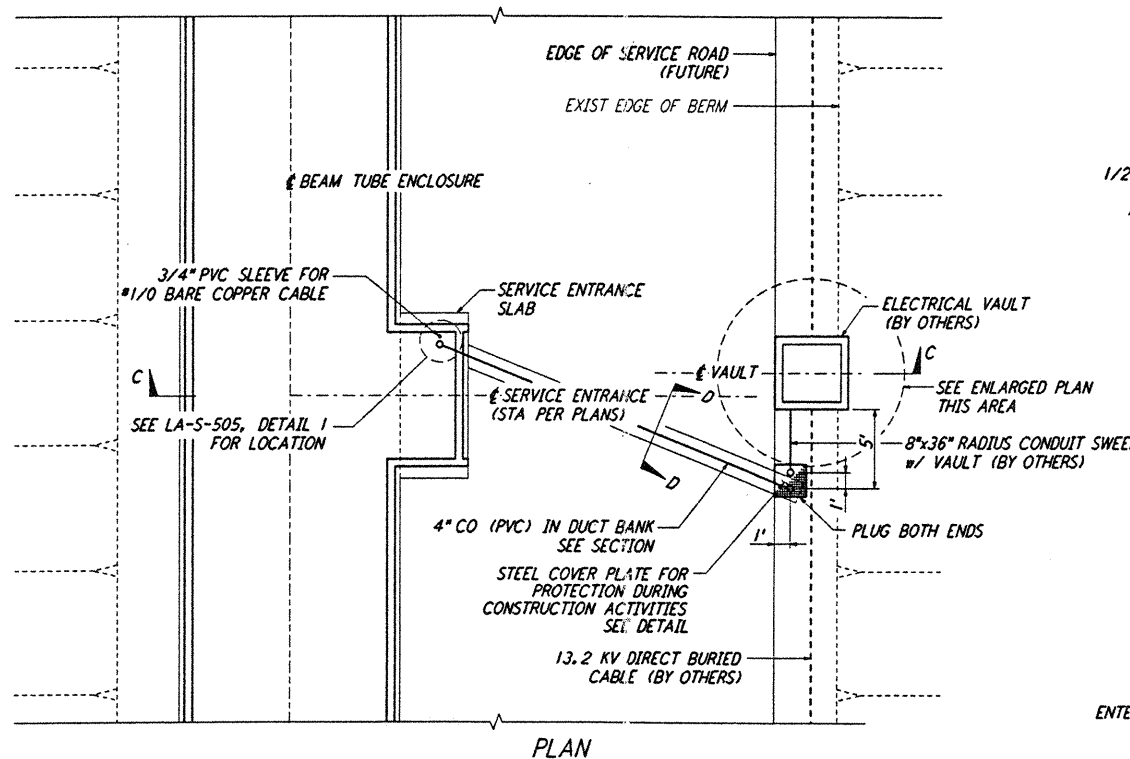
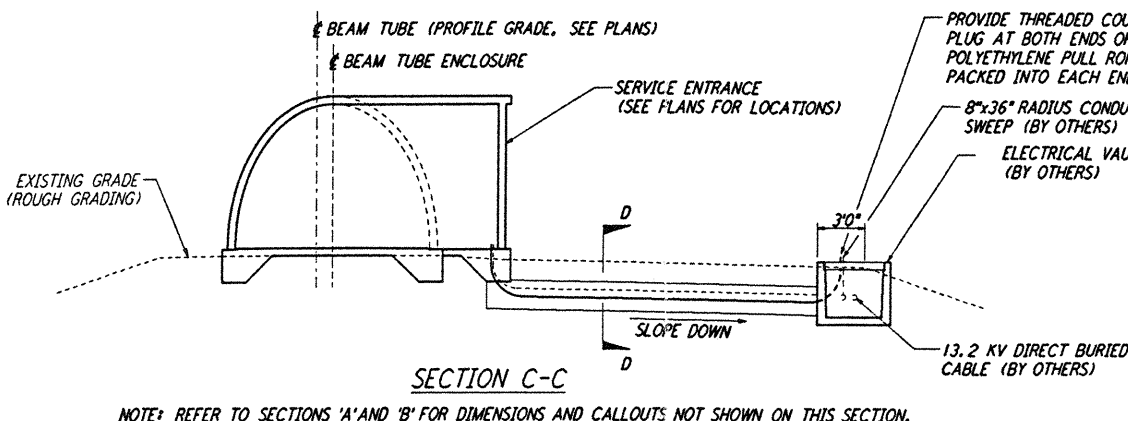
SOUTHWEST ARM: STA 1+47.48 THRU STA 1+72.48
STA 130+64.05 THRU STA 130+89.05

SOUTHEAST ARM: STA 1+47.48 THRU STA 1+72.48
STA 130+64.05 THRU STA 130+89.05



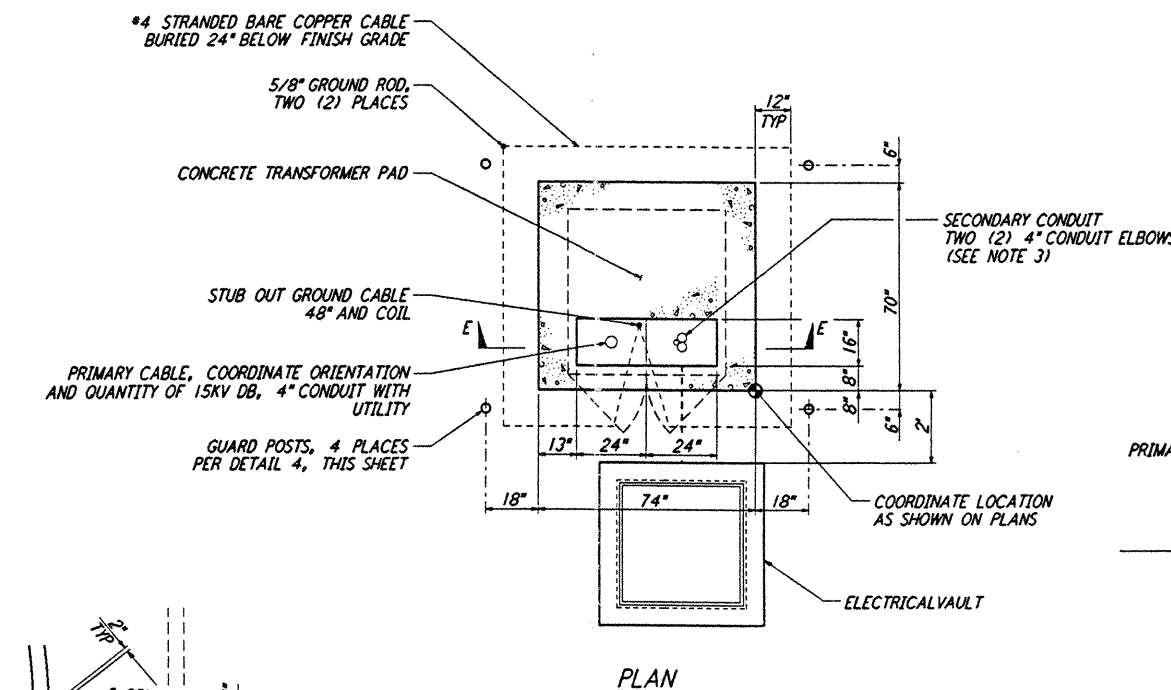
SOUTHWEST ARM: STA 5+84.85 THRU STA 64+90.37
STA 67+11.70 THRU STA 128+56.67

SOUTHEAST ARM: STA 4+54.37 THRU STA 64+90.37
STA 67+11.70 THRU STA 128+56.67



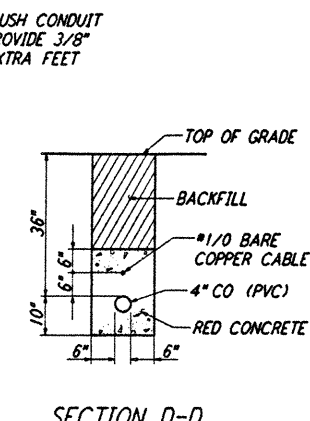
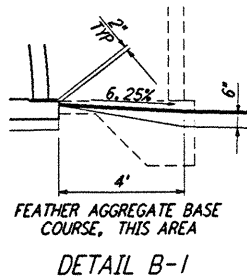
TYPICAL LOCATION PLAN @ SERVICE ENTRANCE FOR ELECTRICAL VAULT
NOT TO SCALE

REF: LA-C-504, LA-C-505, LA-C-511 THRU LA-C-514, LA-C-516 THRU LA-C-519, LA-C-531 THRU LA-C-534, LA-C-536 THRU LA-C-539

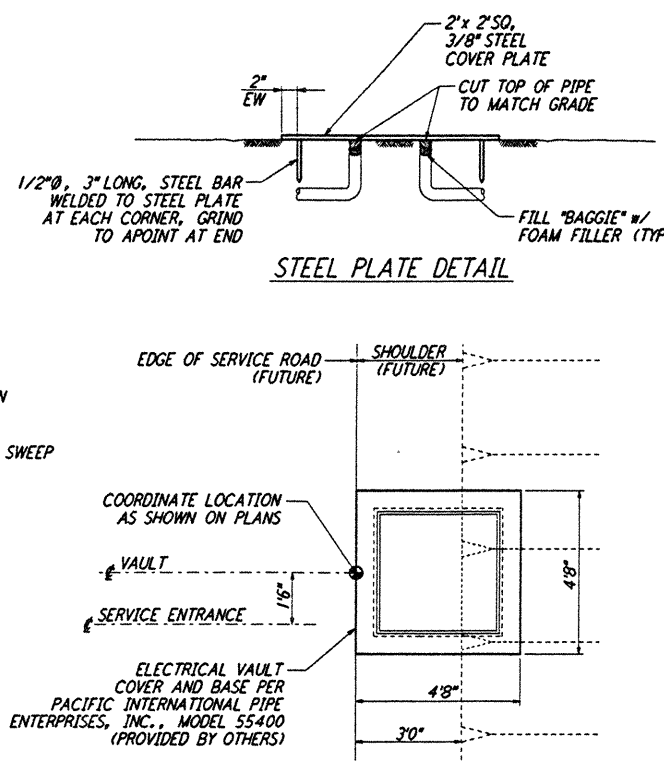


TYPICAL LOCATION PLAN FOR ELECTRICAL TRANSFORMER PAD
NOT TO SCALE

(@ END STATIONS ONLY)



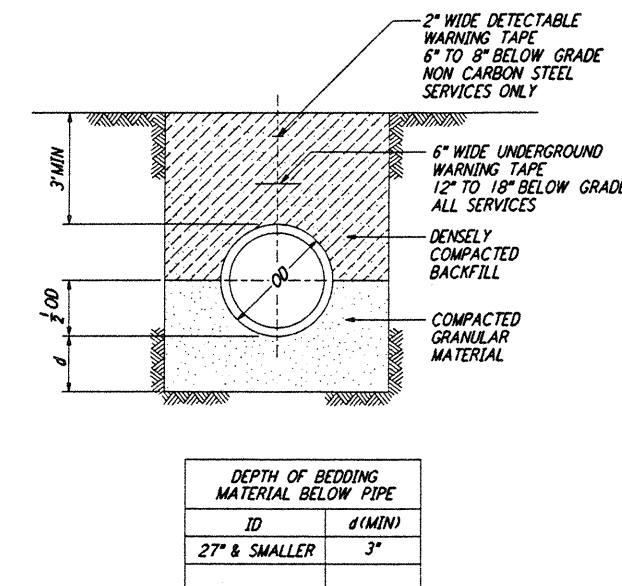
SECTION D-D



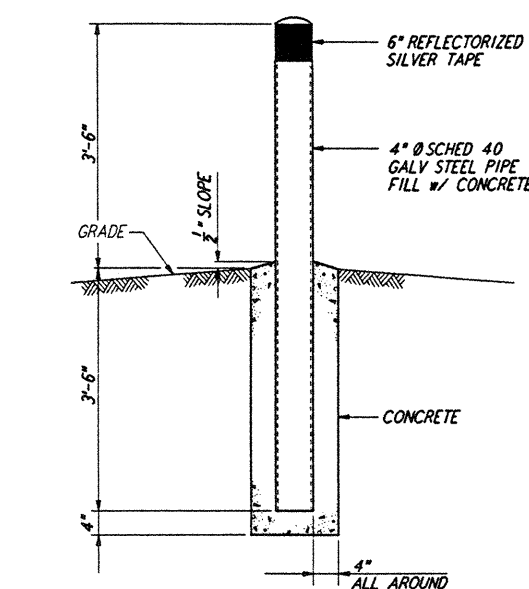
ENLARGED PLAN @ VAULT

NOTES:

- SEE SHEET LA-C-502 FOR GENERAL NOTES, LEGEND AND ABBREVIATIONS.
- FOR SOUTHWEST ARM, SECTIONS 'A' AND 'A (SIM)' ARE MIRRORED ABOUT THE BEAM TUBE CENTERLINE.
- SECONDARY CONDUIT DIRECTION SHALL FACE END STATION, AS APPROPRIATE.
- CONDUITS SHALL EXTEND TOWARD BUILDING VIA DUCT BANK, DETAIL 4, THIS SHEET.
- BITUMINOUS SURFACE TREATMENT TO BE APPLIED WHEN SCHEDULED BY THE CONSTRUCTION MANAGER.



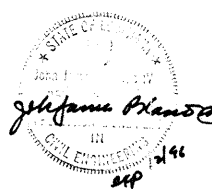
TRENCH BEDDING
NOT TO SCALE



GUARD POST
NOT TO SCALE

DRAWING NO.	DESCRIPTION	NO.	DATE	BY	CHKD	ENGR	PROJ	DESCRIPTION

ISSUED FOR CONSTRUCTION			
DRAWN	WRB	11-15-96	
CHECKED	ML	11-15-96	
ENGINEER	JLB	11/15/96	
PROJ		11/15/96	



LASER INTERFEROMETER GRAVITATIONAL-WAVE OBSERVATORY BEAM TUBE ENCLOSURE - LIVINGSTON, LA			
TITLE	CIVIL TYPICAL SECTIONS AND DETAILS	SCALE	NONE
CONTRACT NUMBER	PP150969	PROJECT NUMBER	8094
SHEET NUMBER	LA-C-504	REVISIONS	

REG. U.S. PAT. & TM. OFF. © 1996 PARSONS BRINCKERHOFF COMPANY