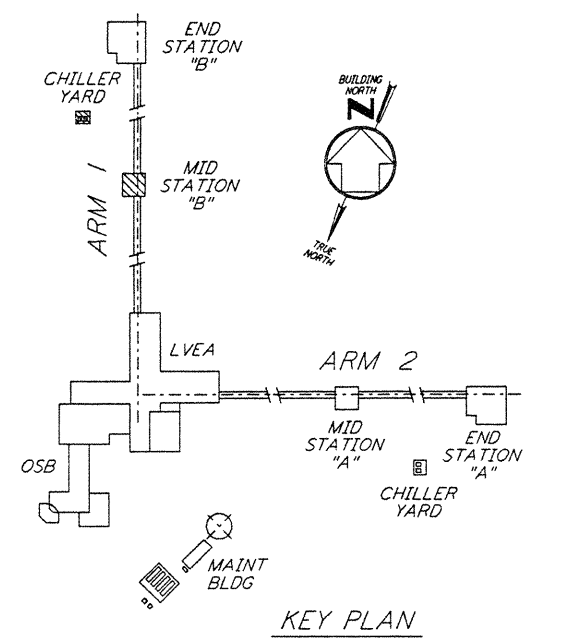
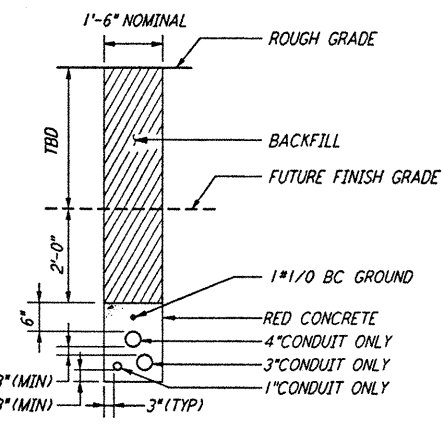
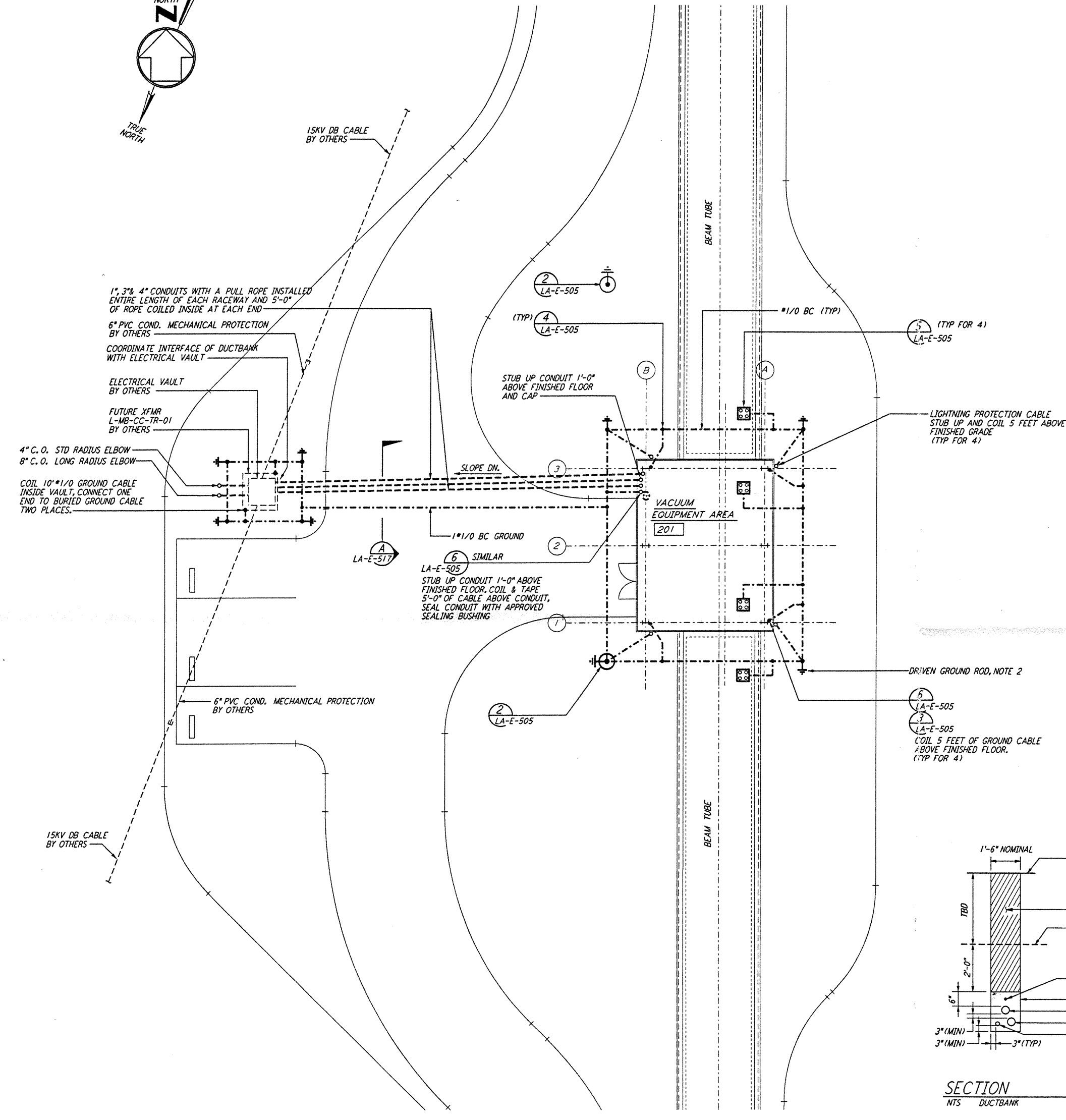
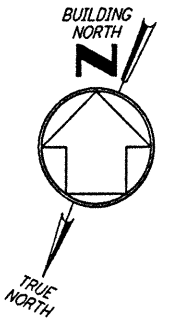
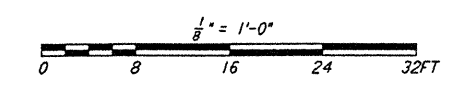


NOTES:

1. SEE CIVIL DRAWING LA-C-541 FOR ACTUAL LOCATION OF ELECTRICAL VAULT.
2. SEE SPECIFICATION SECTION 16670 FOR LIGHTNING PROTECTION AND GROUNDING MATERIAL.
3. LARGE DIAMETER PVC CONDUIT ELBOW SHALL ACCOMMODATE 15 KV TERMINATION ELBOW (TERMINATOR BY OTHERS)
4. CONDUIT ELBOW STUB-UPS AT ELECTRICAL VAULT ARE BEING PROVIDED TO ACCOMMODATE FUTURE BAKE-OUT TRANSFORMERS BY OTHERS.
5. PROVIDE PULLROPES AND CONDUIT CAPS FOR ALL CONDUIT STUB-UPS.



GROUNDING & UNDERGROUND PLAN

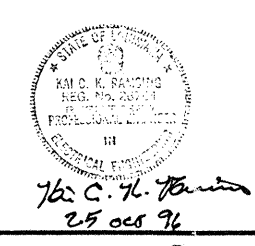


not be reproduced, copied, loaned, exhibited, or used in any other way, except by written consent from PARSONS to the borrower.

This document and the design it covers are the property of PARSONS. They are loaned only with the borrower's expressed written agreement that they will

REFERENCES		REVISIONS		ISSUED FOR CONSTRUCTION	
DRAWING NO.	DESCRIPTION	NO.	DATE	BY	CHKD

ISSUED FOR CONSTRUCTION	M.M.	11-15-96
DRAWN	JCL	7-24-96
CHECKED	JCL	10-25-96
ENGINEER	JCL	11/15/96
PROJ		



PARSONS
 100 WEST WALNUT STREET
 PASADENA, CALIFORNIA

LIGO
 CALIFORNIA INSTITUTE OF TECHNOLOGY
 MASSACHUSETTS INSTITUTE OF TECHNOLOGY

LASER INTERFEROMETER
 GRAVITATIONAL-WAVE OBSERVATORY
 BEAM TUBE ENCLOSURE - LIVINGSTON, LA

TITLE	SCALE	CONTRACT NUMBER	PROJECT NUMBER
ELECTRICAL MID STATION B GROUNDING & UNDERGROUND PLAN	AS NOTED	PP 150969	8094
SHEET NUMBER	REVISION		
LA-E-517			