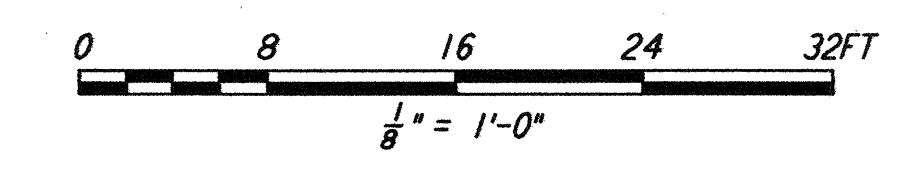
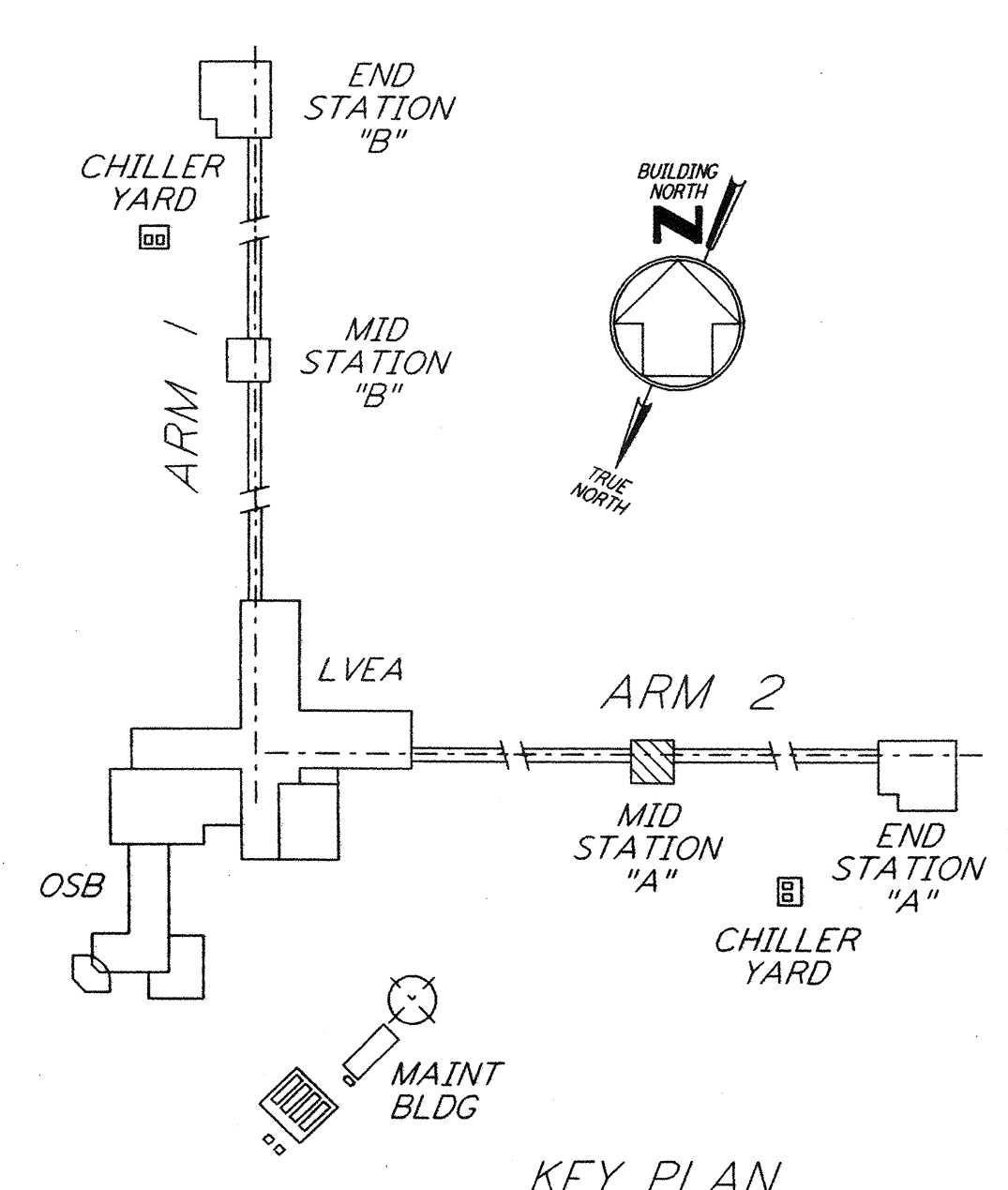
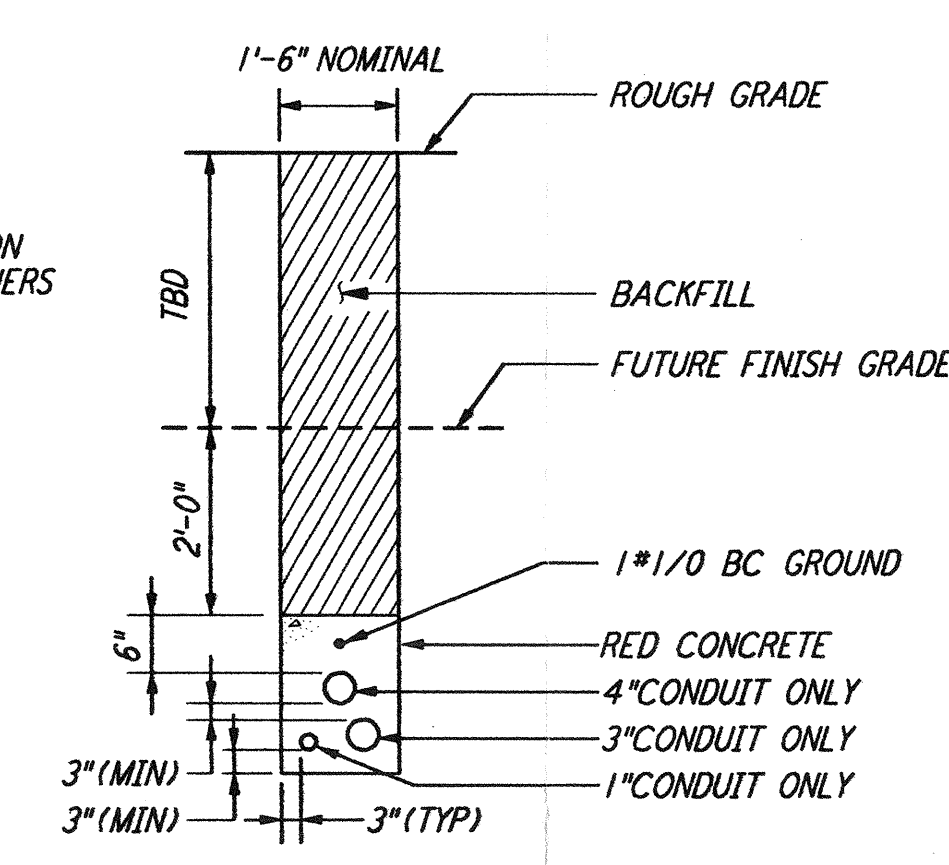
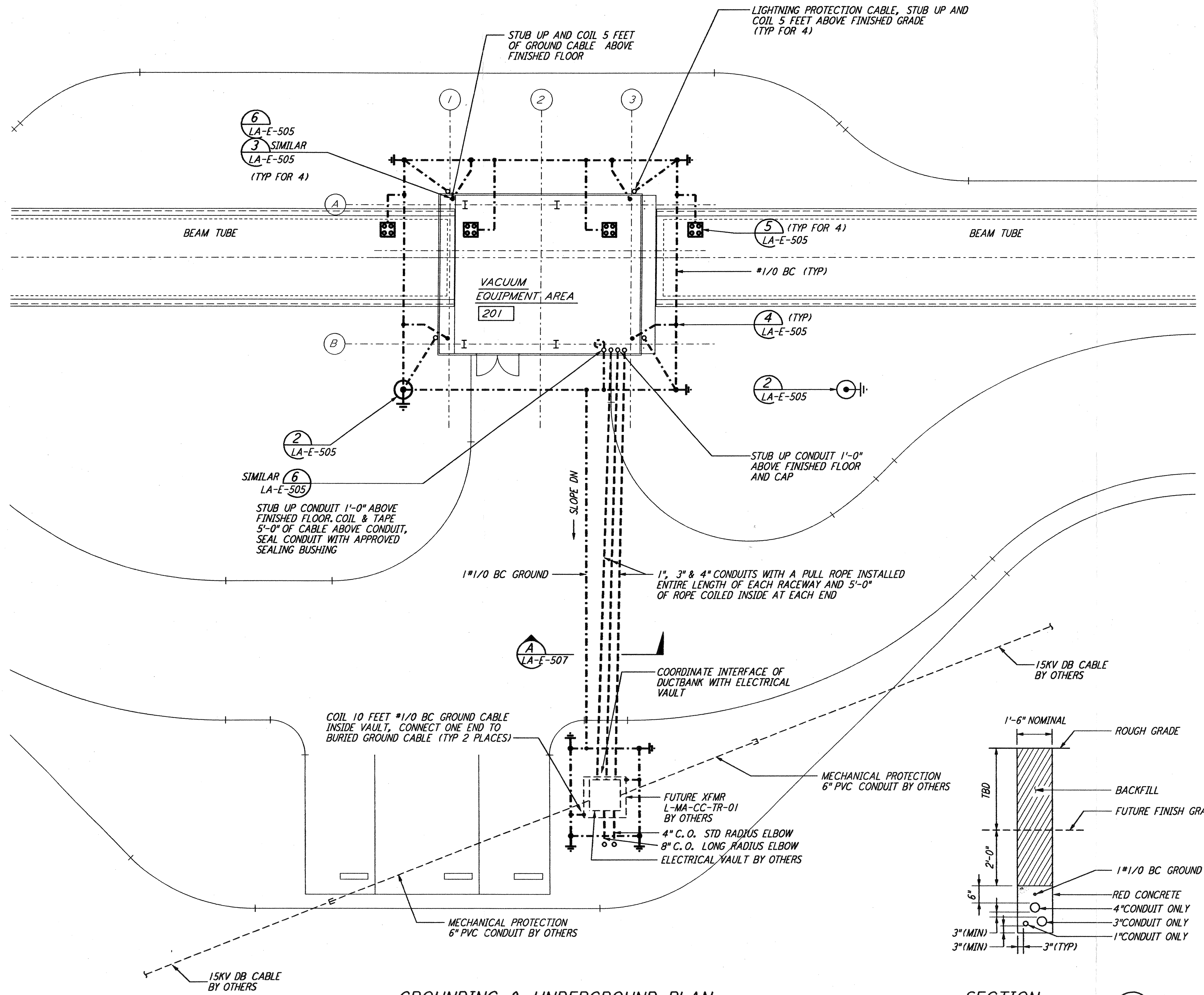
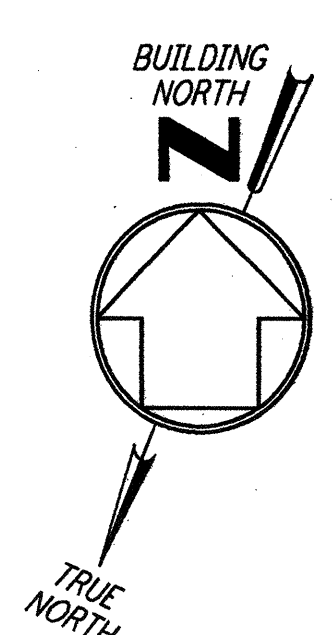


NOTES:

1. SEE CIVIL DRAWING LA-C-521 FOR ACTUAL LOCATION OF ELECTRICAL VAULT.
2. SEE SPECIFICATION SECTION 16670 FOR LIGHTNING PROTECTION AND GROUNDING MATERIAL.
3. LARGE DIAMETER PVC CONDUIT ELBOW SHALL ACCOMMODATE 15 KV TERMINATION ELBOW (TERMINATOR BY OTHERS)
4. CONDUIT ELBOW STUB-UPS AT ELECTRICAL VAULT ARE BEING PROVIDED TO ACCOMMODATE FUTURE BAKE-OUT TRANSFORMERS BY OTHERS.
5. PROVIDE PULLROPES AND CONDUIT CAPS FOR ALL CONDUIT STUB-UPS.



GROUNDING & UNDERGROUND PLAN

SECTION A
 NTS DUCTBANK REF LA-E-507

LIGO-D961244-01-0

LASER INTERFEROMETER
 GRAVITATIONAL-WAVE OBSERVATORY
 BEAM TUBE ENCLOSURE - LIVINGSTON, LA

NO.	DATE	BY	CHKD	ENGR	PROJ	DESCRIPTION
1	1-15-99	MEI	--	--	MDW	ISSUED FOR AS BUILT

ISSUED FOR CONSTRUCTION
 DRAWN M.M. 11-15-96
 CHECKED
 ENGINEER
 PROJ
AS-BUILT DRAWINGS

PARSONS
 100 WEST WALNUT STREET
 PASADENA, CALIFORNIA

LIGO
 CALIFORNIA INSTITUTE OF TECHNOLOGY
 MASSACHUSETTS INSTITUTE OF TECHNOLOGY

ELECTRICAL MID STATION A GROUNDING & UNDERGROUND PLAN		SCALE AS NOTED	CONTRACT NUMBER PPI 50969	PROJECT NUMBER 8094
SHEET NUMBER LA-E-507		REVISIONS		

This document and the design it covers are the property of PARSONS. They are loaned only with the borrower's expressed written agreement that they will not be reproduced, copied, loaned, exhibited, or used in any other way, except by written consent from PARSONS to the borrower.

Thu Jan 14 16:27:41 1999 C:\PLOT\GUE\53-1\6822.DOC 52085 K:\V3682\w507b.prf LIGOLF3.BOR