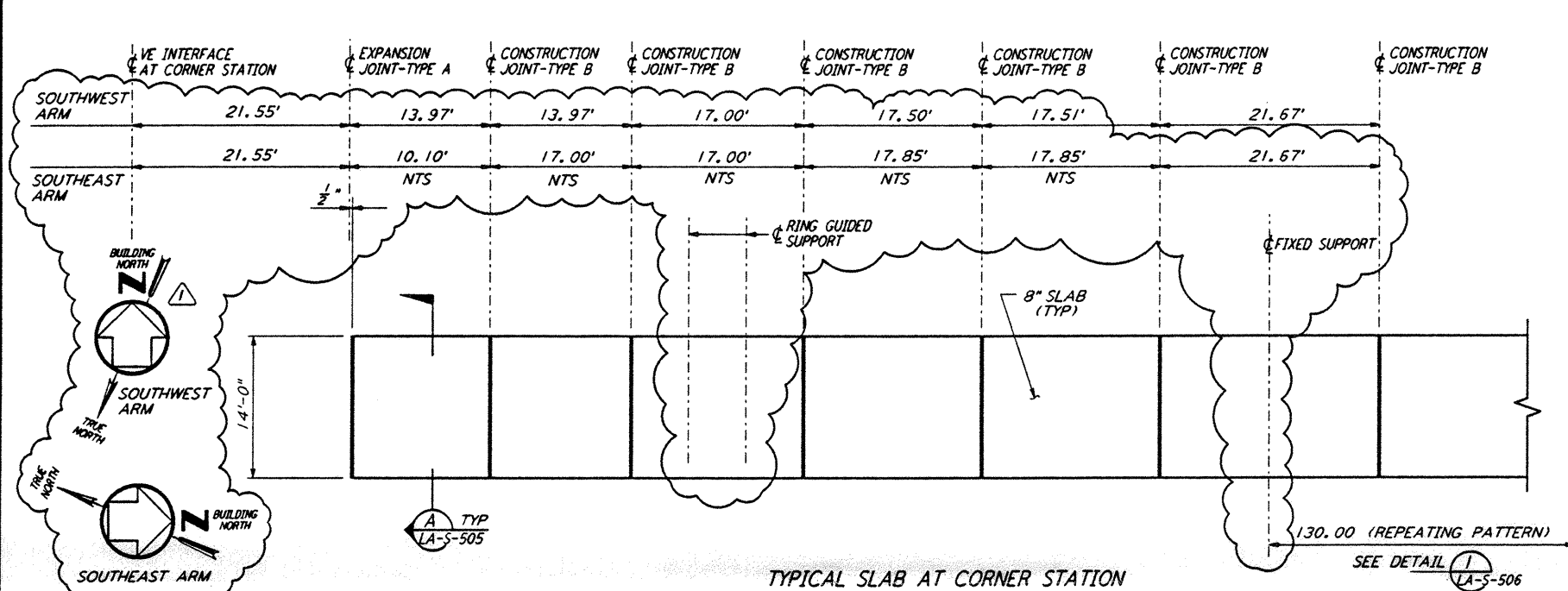
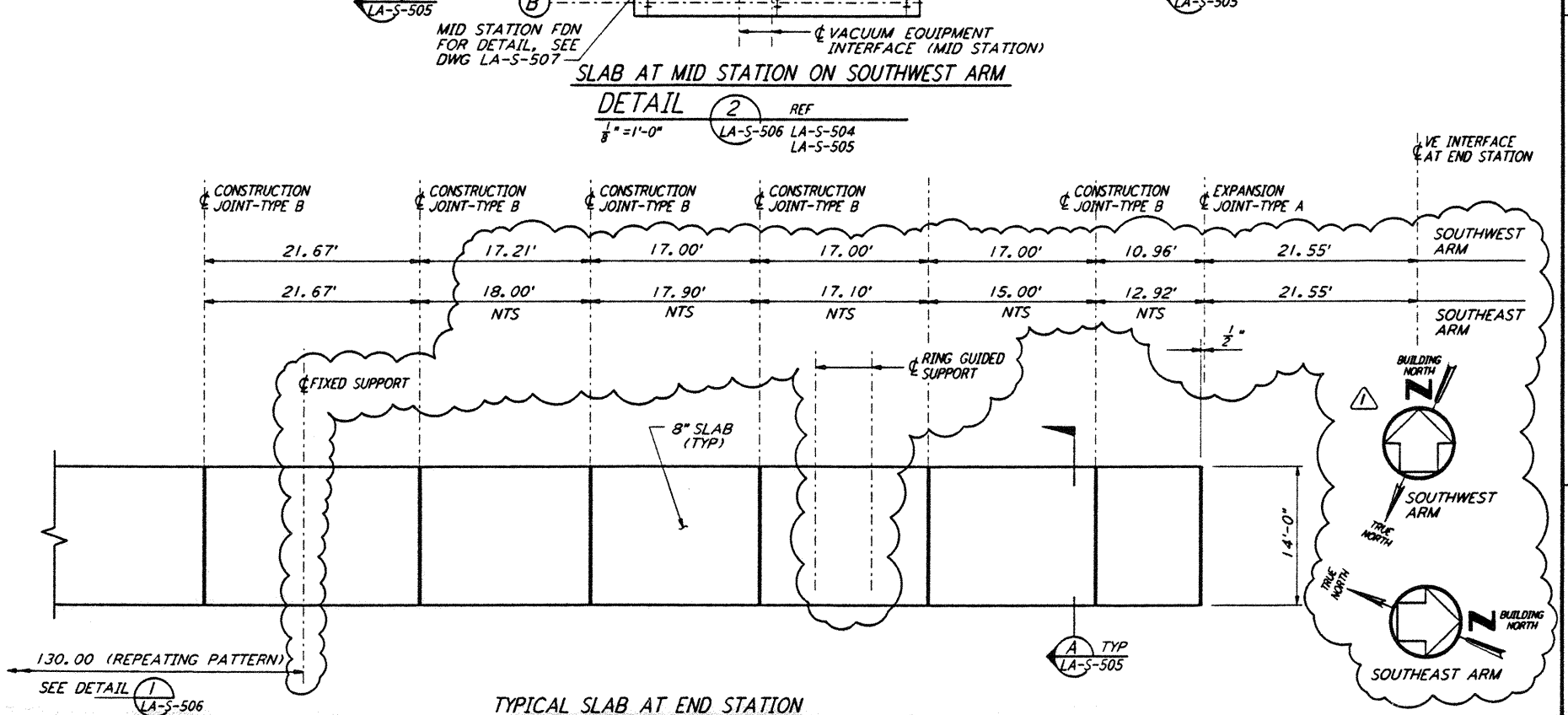


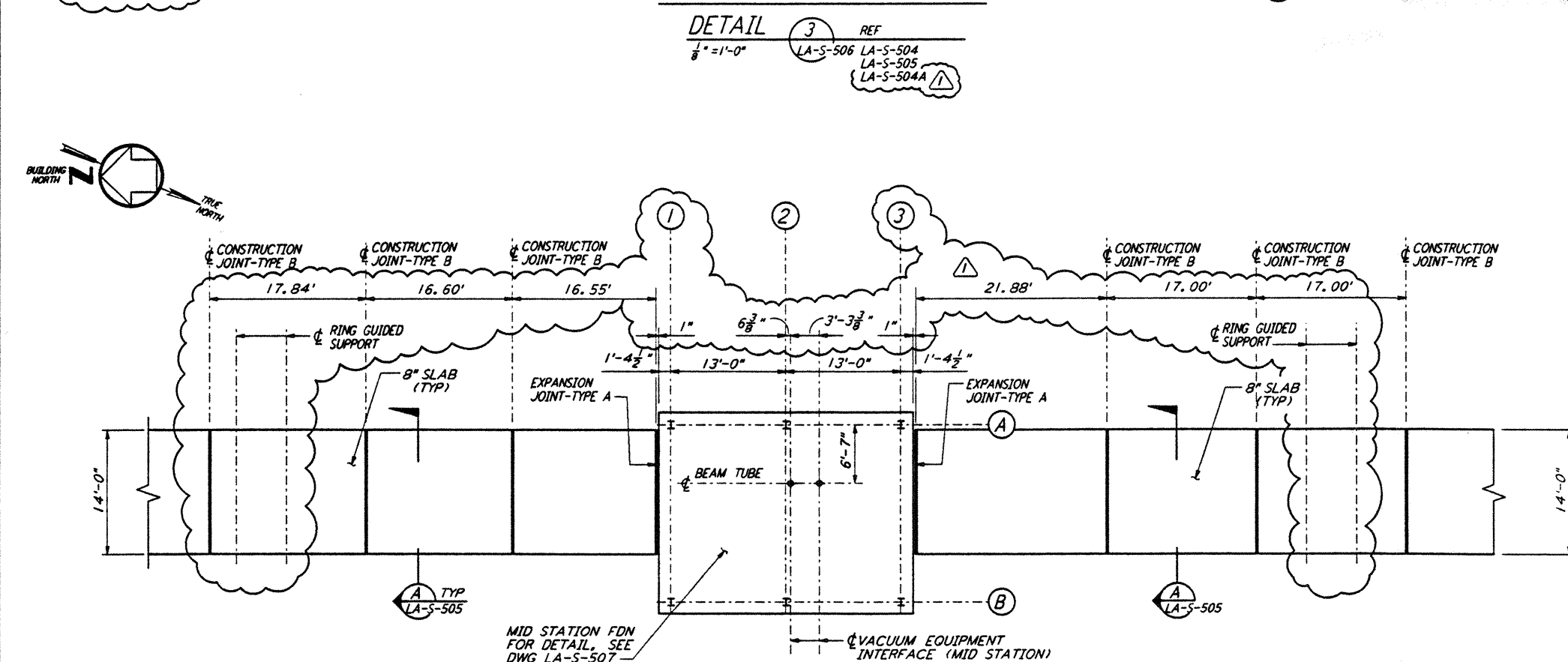
TYPICAL SLAB LAYOUT BETWEEN 130' REPEATING SUPPORT PATTERN  
 DETAIL 1 REF  
 $\frac{1}{8}'' = 1'-0''$  LA-S-506 LA-S-504



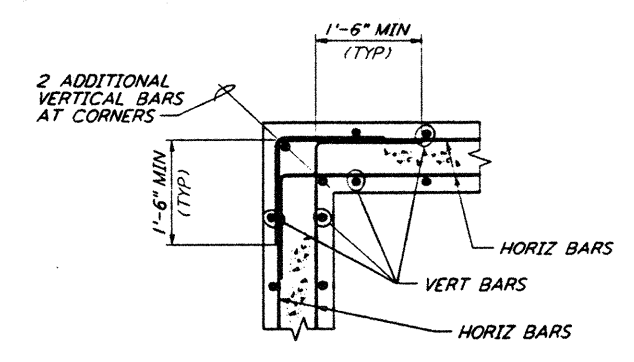
TYPICAL SLAB AT CORNER STATION  
 DETAIL 3 REF  
 $\frac{1}{8}'' = 1'-0''$  LA-S-506 LA-S-504 LA-S-505 LA-S-504A



TYPICAL SLAB AT END STATION  
 DETAIL 4 REF  
 $\frac{1}{8}'' = 1'-0''$  LA-S-506 LA-S-504 LA-S-505 LA-S-504A

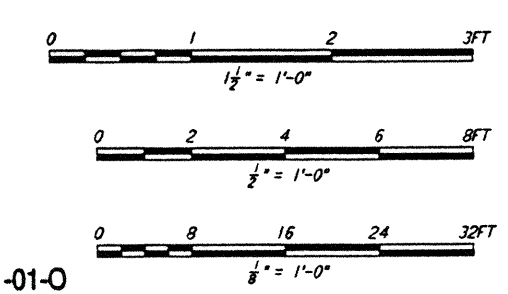


SLAB AT MID STATION ON SOUTHEAST ARM  
 DETAIL 7 REF  
 $\frac{1}{8}'' = 1'-0''$  LA-S-506 LA-S-504 LA-S-505 LA-S-504A



DETAIL 6 REF  
 $\frac{1}{8}'' = 1'-0''$  LA-S-506 LA-S-505

NOTE:  
 1. FOR GENERAL NOTES, ABBREVIATIONS AND LEGEND SEE DRAWING LA-S-501.



LIGO-D961241-01-0

This document and the design it covers are the property of PARSONS. They are loaned only with the borrower's expressed written agreement that they will not be reproduced, copied, loaned, exhibited, or used in any other way, except by written consent from PARSONS to the borrower.

NO.	DATE	BY	CHKD	ENGR	PROJ	DESCRIPTION
1	2-28-97	GP	GP			REV DIMS & REF AT DET 2, 3, 4 & 7

ISSUED FOR CONSTRUCTION  
 DRAWN MCS 11-15-96  
 CHECKED DDM 11-15-96  
 ENGINEER BP 11-15-96  
 PROJ TDM 11-15-96



**PARSONS**  
 100 WEST WALNUT STREET  
 PASADENA, CALIFORNIA

**LIGO**  
 CALIFORNIA INSTITUTE OF TECHNOLOGY  
 MASSACHUSETTS INSTITUTE OF TECHNOLOGY

LASER INTERFEROMETER  
 GRAVITATIONAL-WAVE OBSERVATORY  
 BEAM TUBE ENCLOSURE - LIVINGSTON, LA

STRUCTURAL  
 BEAM TUBE ENCLOSURE  
 SECTIONS & DETAILS  
 SHEET 2

AS NOTED PP150969 8094  
**LA-S-506**