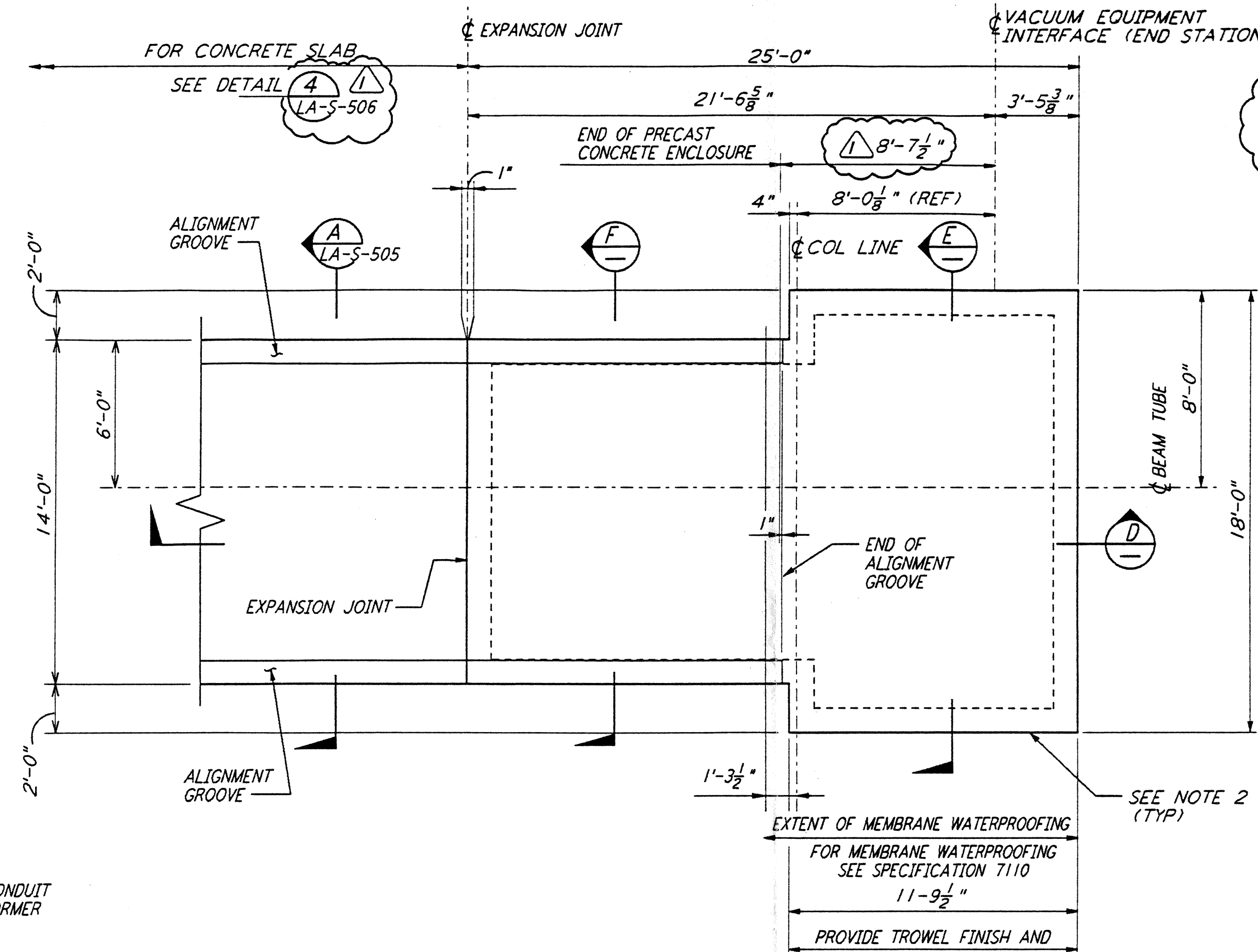
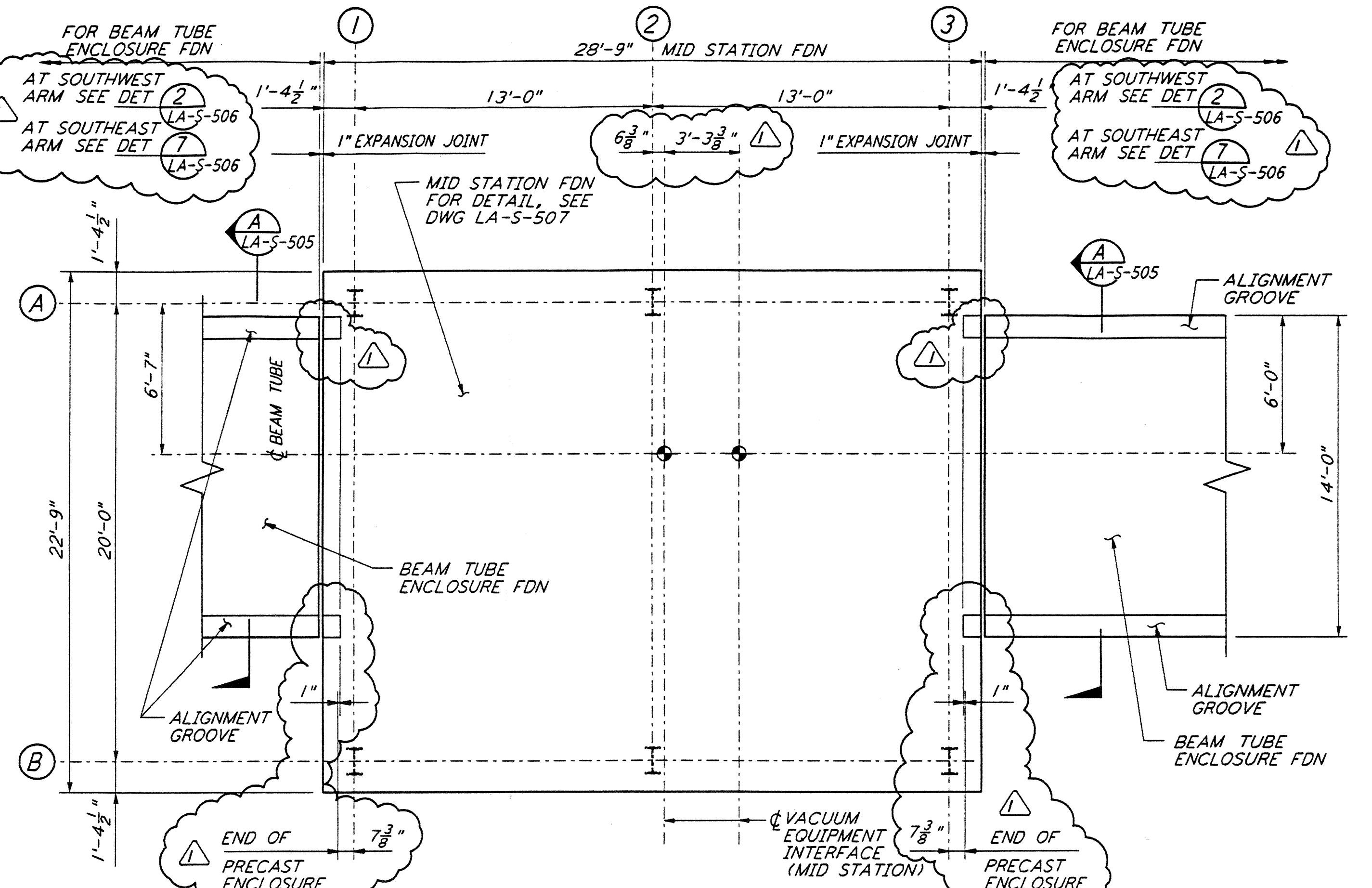


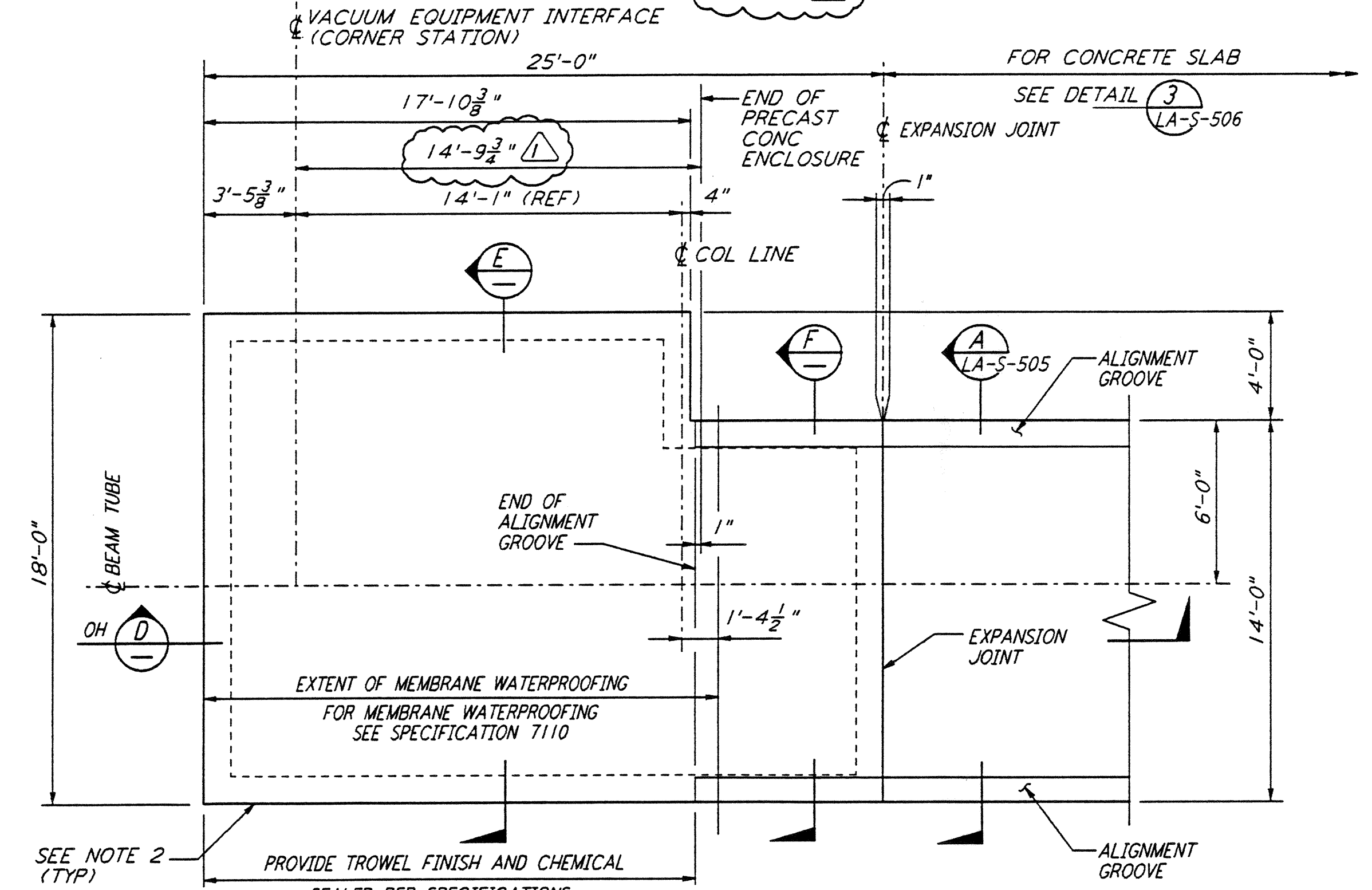
DETAIL 1 REF
 1/4" = 1'-0"
 LA-S-505 LA-S-504 LA-S-504A



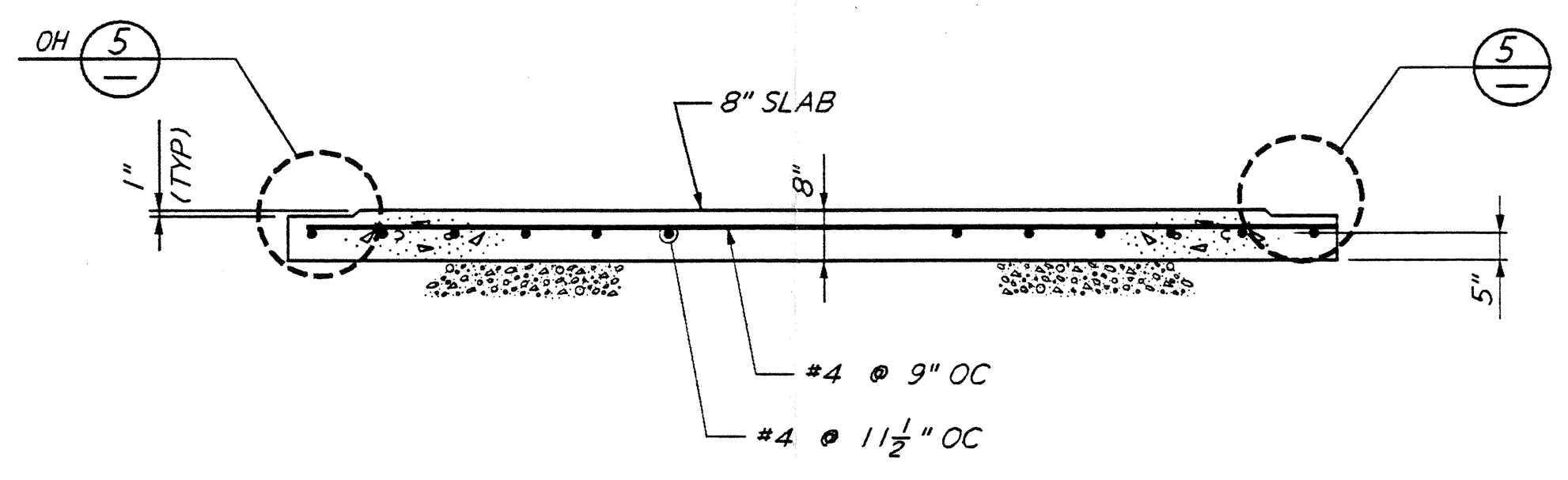
DETAIL 2 REF
 1/4" = 1'-0"
 LA-S-505 LA-S-504 LA-S-504A



DETAIL 3 REF
 1/4" = 1'-0"
 LA-S-505 LA-S-504 LA-S-504A

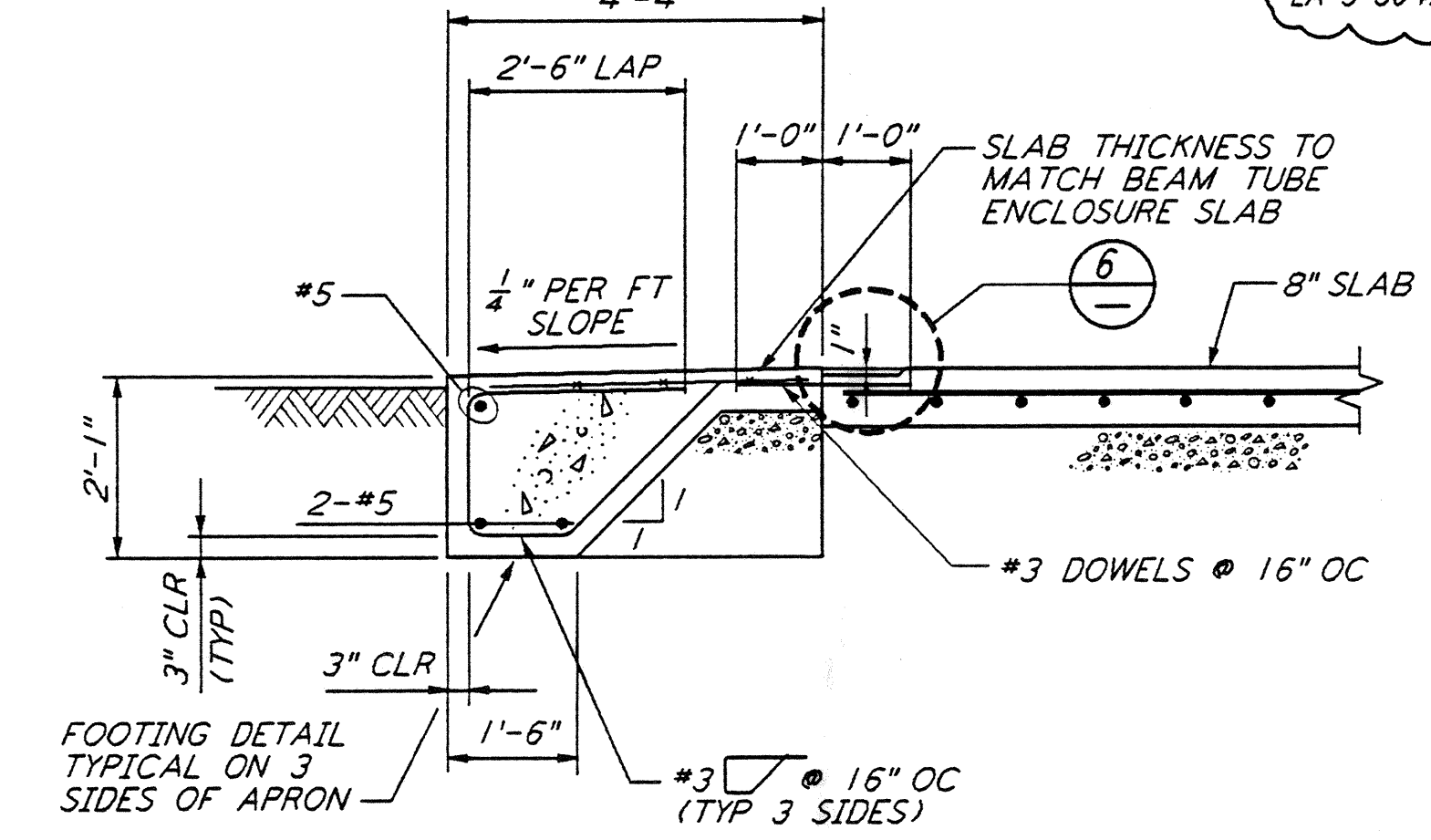


DETAIL 4 REF
 1/4" = 1'-0"
 LA-S-505 LA-S-504 LA-S-504A



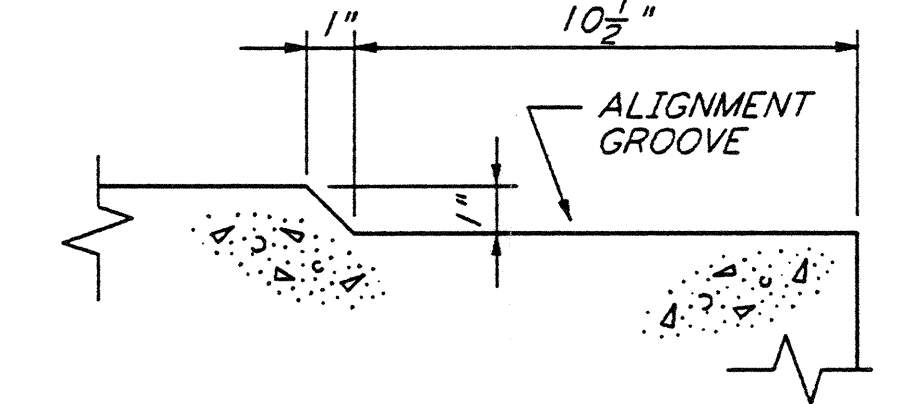
TYPICAL BEAM TUBE ENCLOSURE SLAB

SECTION A REF
 1/2" = 1'-0"
 LA-S-505 LA-S-506

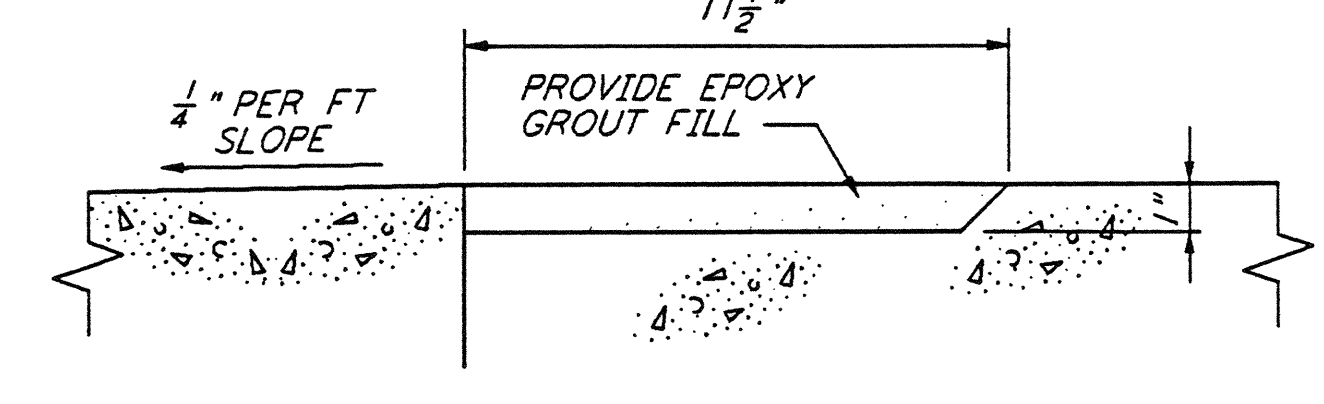


SECTION B
 1/2" = 1'-0"

NOTE:
 1. MID STATION FOUNDATION SHOWN IS FOR SOUTHWEST ARM, FOR SOUTHEAST ARM MID STATION FOUNDATION ORIENTATION SEE DETAIL 7
 LA-S-506

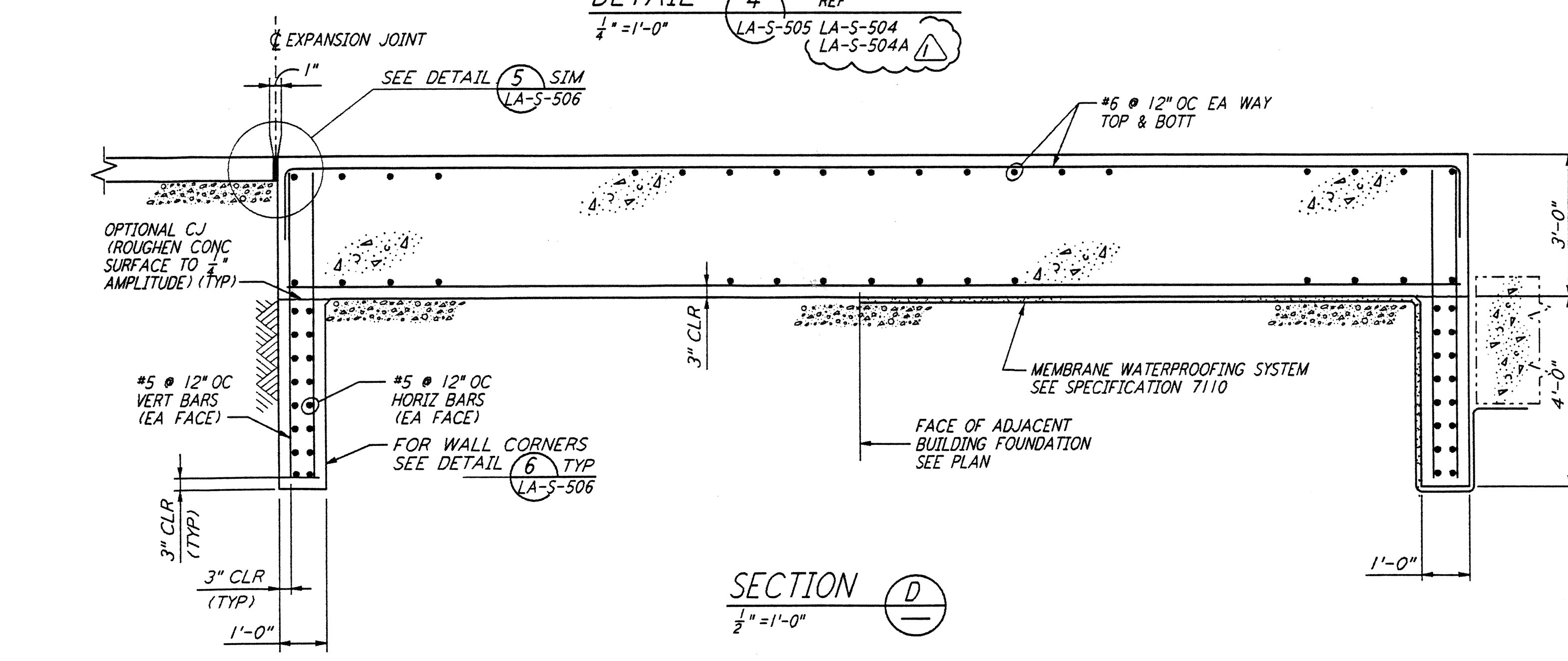
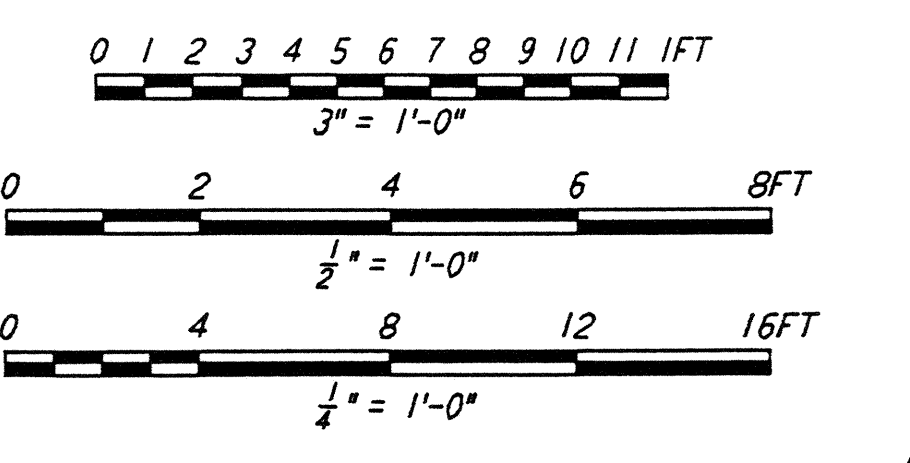


DETAIL 5 REF
 3" = 1'-0"
 LA-S-505 LA-S-506

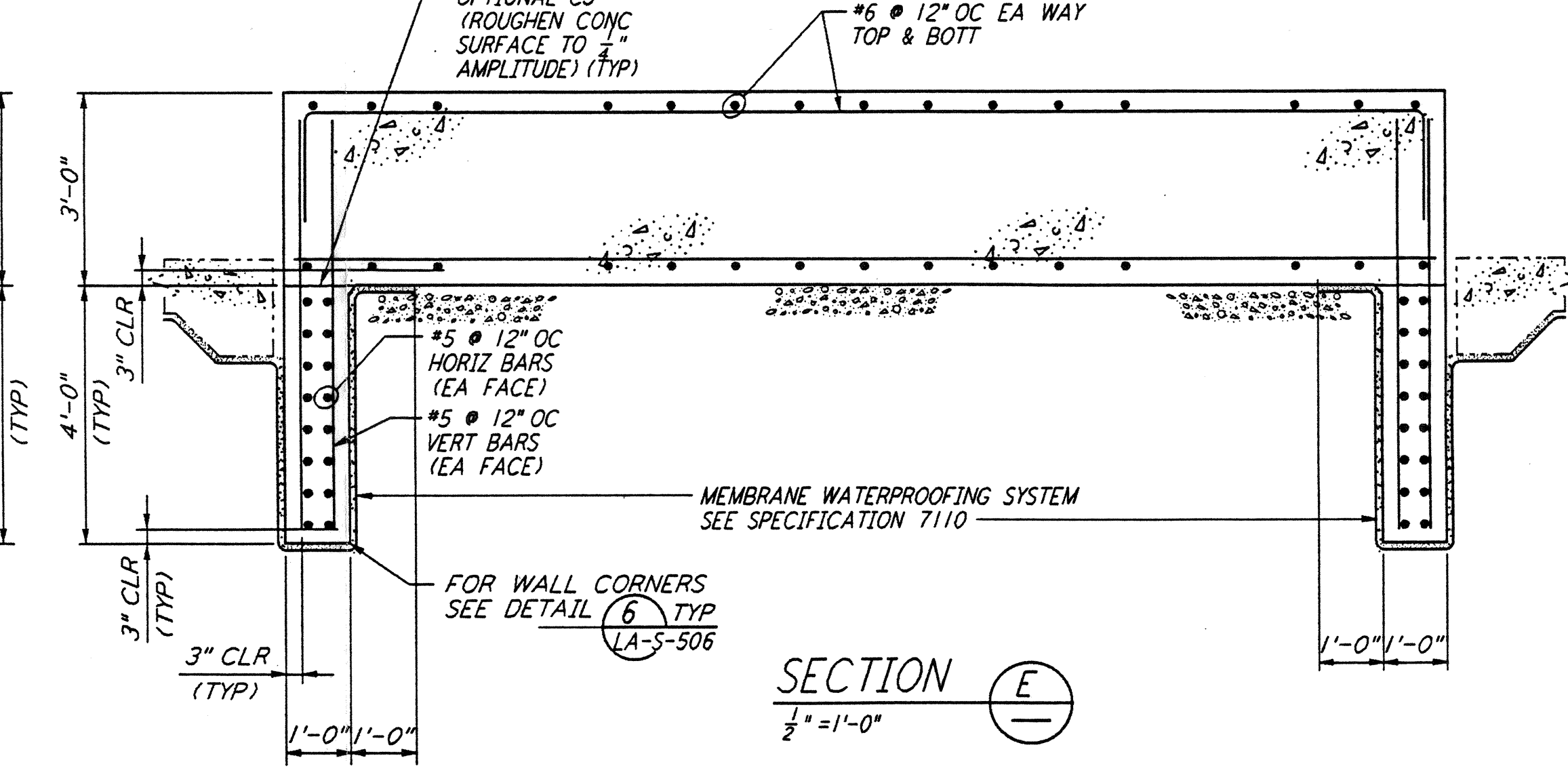


DETAIL 6
 3" = 1'-0"

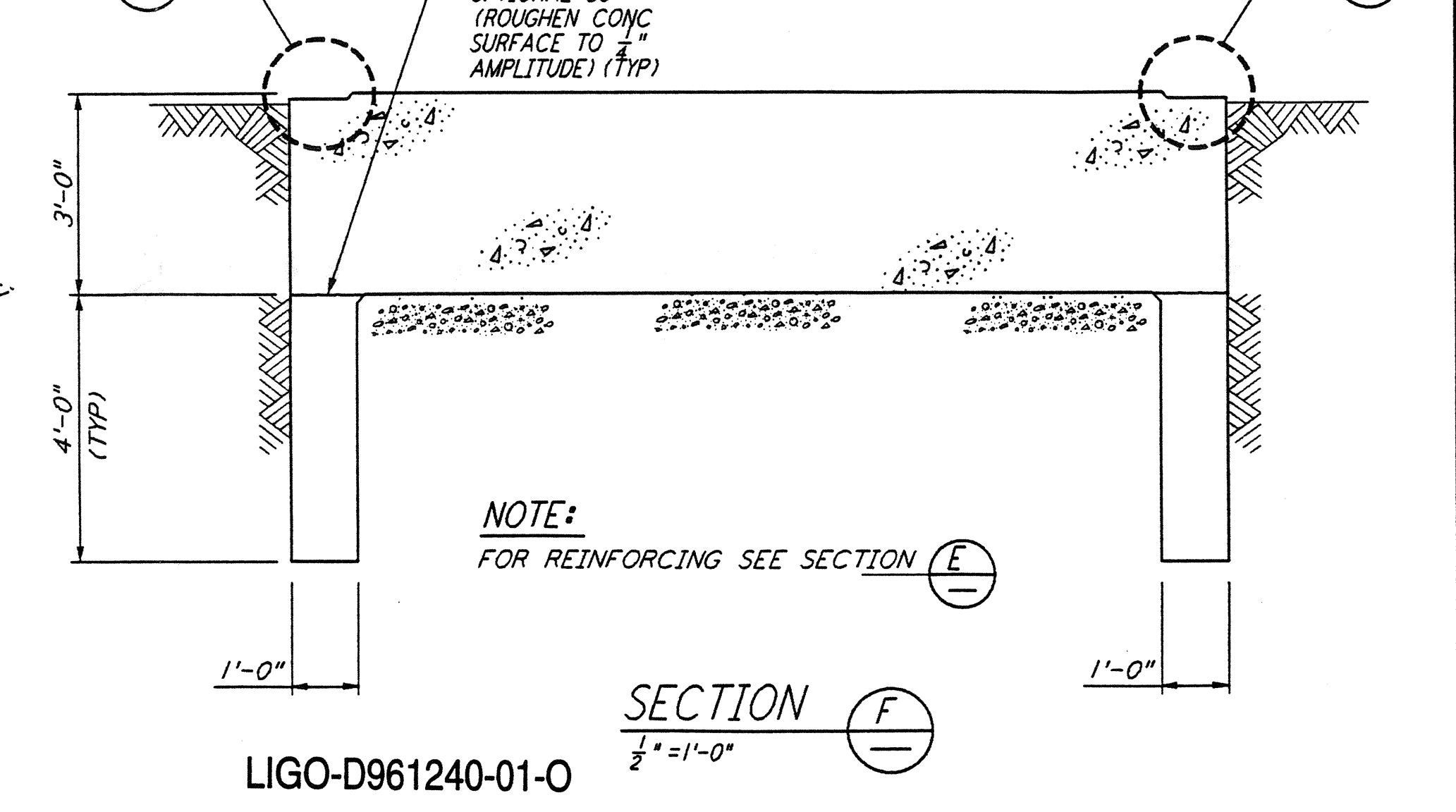
NOTE:
 1. FOR GENERAL NOTES, ABBREVIATIONS AND LEGEND SEE DRAWING LA-S-501.
 2. ALL EXTERIOR VERTICAL SURFACES OF FOUNDATIONS SHALL BE FORMED.



SECTION D
 1/2" = 1'-0"



SECTION E
 1/2" = 1'-0"



SECTION F
 1/2" = 1'-0"

LIGO-D961240-01-0

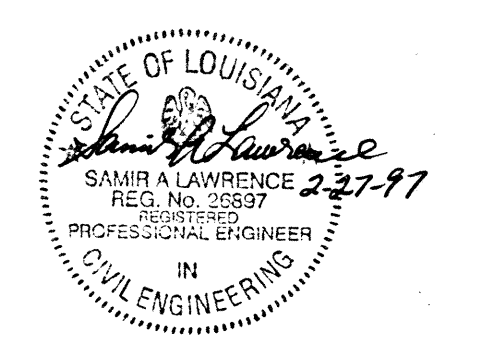
NOTE:
 FOR REINFORCING SEE SECTION E

not be reproduced, copied, loaned, exhibited, or used in any other way, except by written consent from PARSONS to the borrower.

This document and the design it covers are the property of PARSONS. They are loaned only with the borrower's expressed written agreement that they will

NO.	DATE	BY	CHKD	ENGR	PROJ	DESCRIPTION
1	2-28-97	GP	SAH	GP	DAH	REV DIMS & REFS AT DET 1 THRU 4

ISSUED FOR CONSTRUCTION		
DRAWN	MCS	11-15-96
CHECKED	DDM	11-15-96
ENGINEER	BP	11-15-96
PROJ	TDM	11-15-96



PARSONS
 100 WEST WALNUT STREET
 PASADENA, CALIFORNIA

LIGO
 CALIFORNIA INSTITUTE OF TECHNOLOGY
 MASSACHUSETTS INSTITUTE OF TECHNOLOGY

LASER INTERFEROMETER
 GRAVITATIONAL-WAVE OBSERVATORY
 BEAM TUBE ENCLOSURE - LIVINGSTON, LA

TITLE: STRUCTURAL BEAM TUBE ENCLOSURE SECTIONS & DETAILS SHEET I

SCALE: AS NOTED

PROJECT NUMBER: PPI50969

SHEET NUMBER: 8094

REVISIONS: LA-S-505