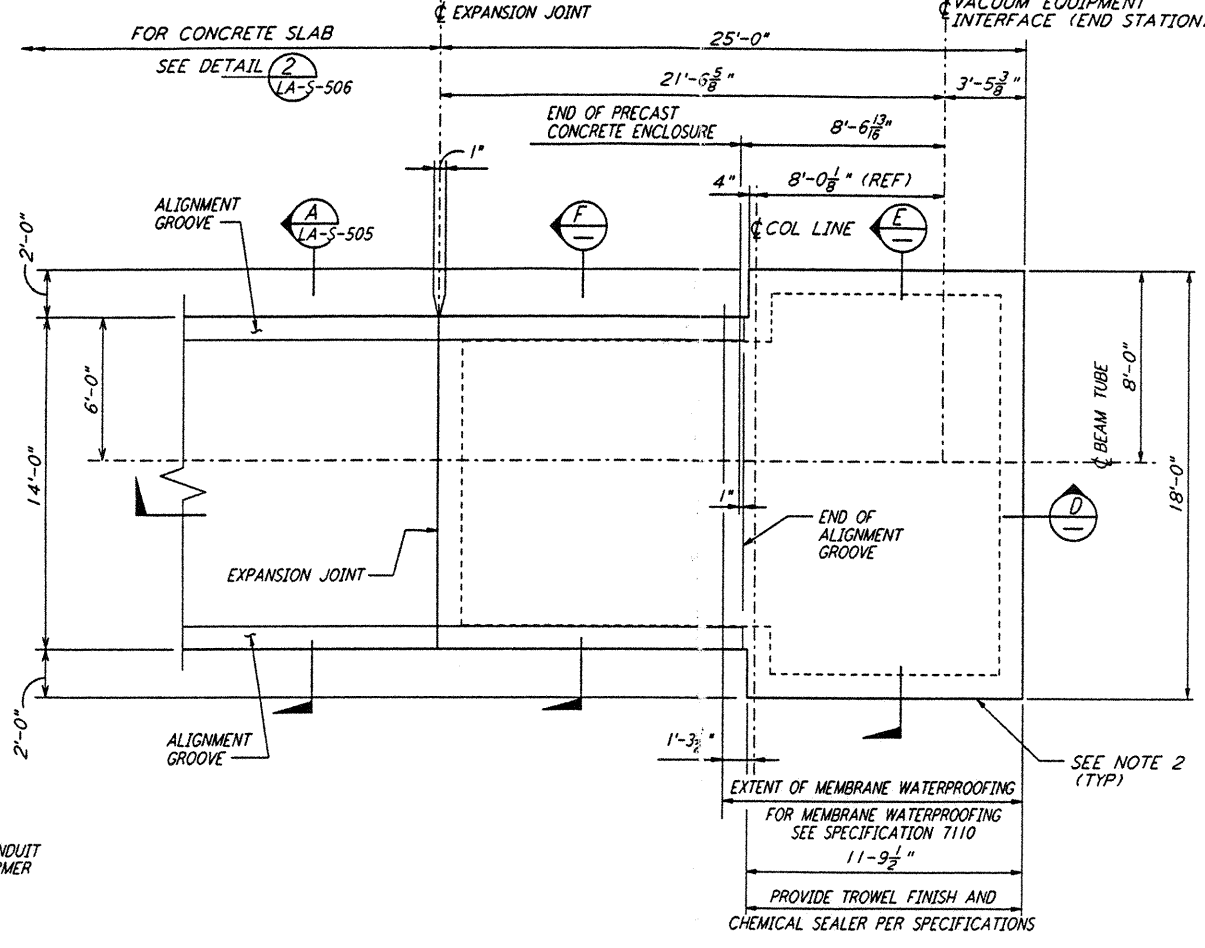
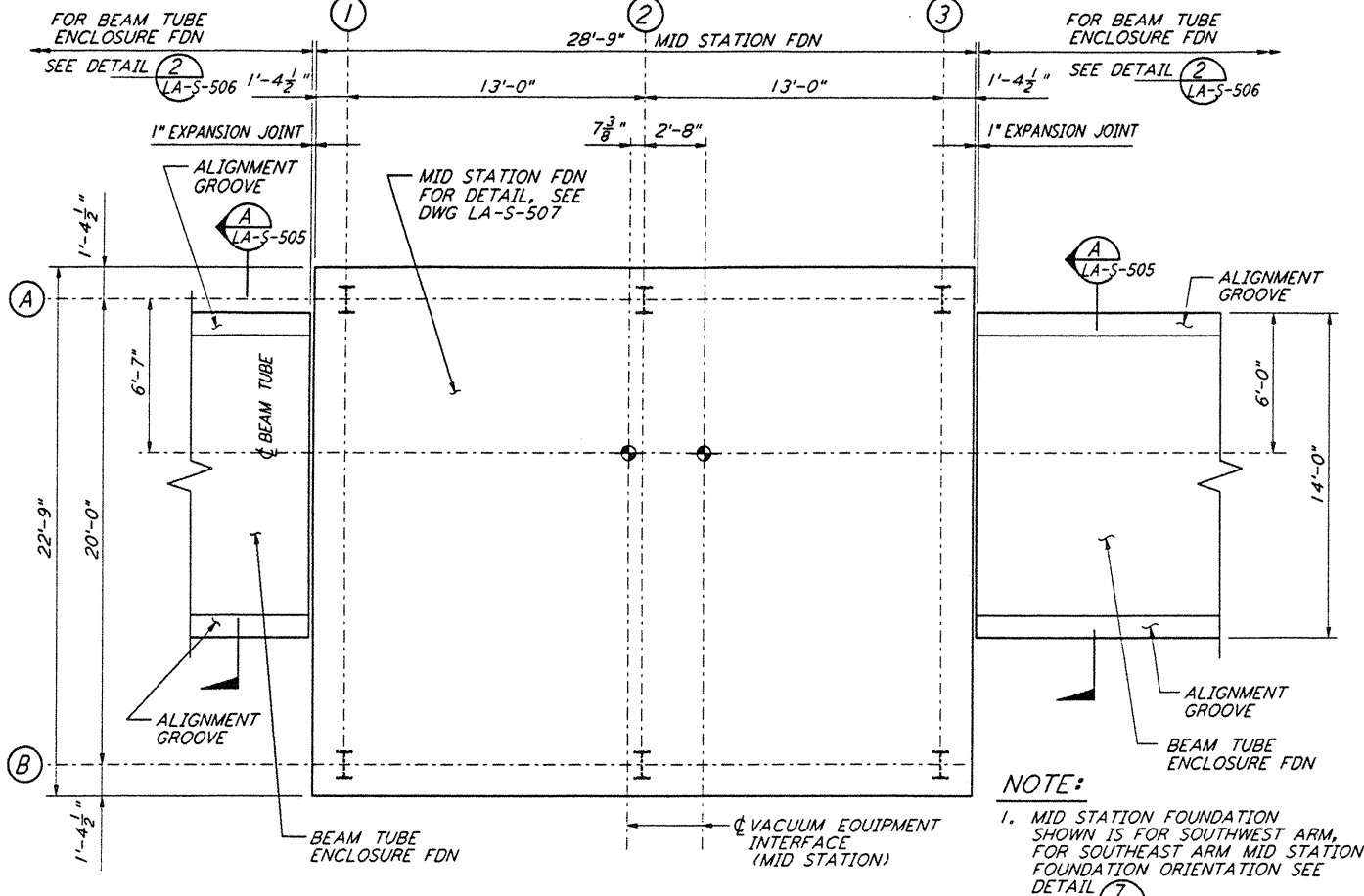


DETAIL 1 REF
 1/4" = 1'-0"
 LA-S-505 LA-S-504

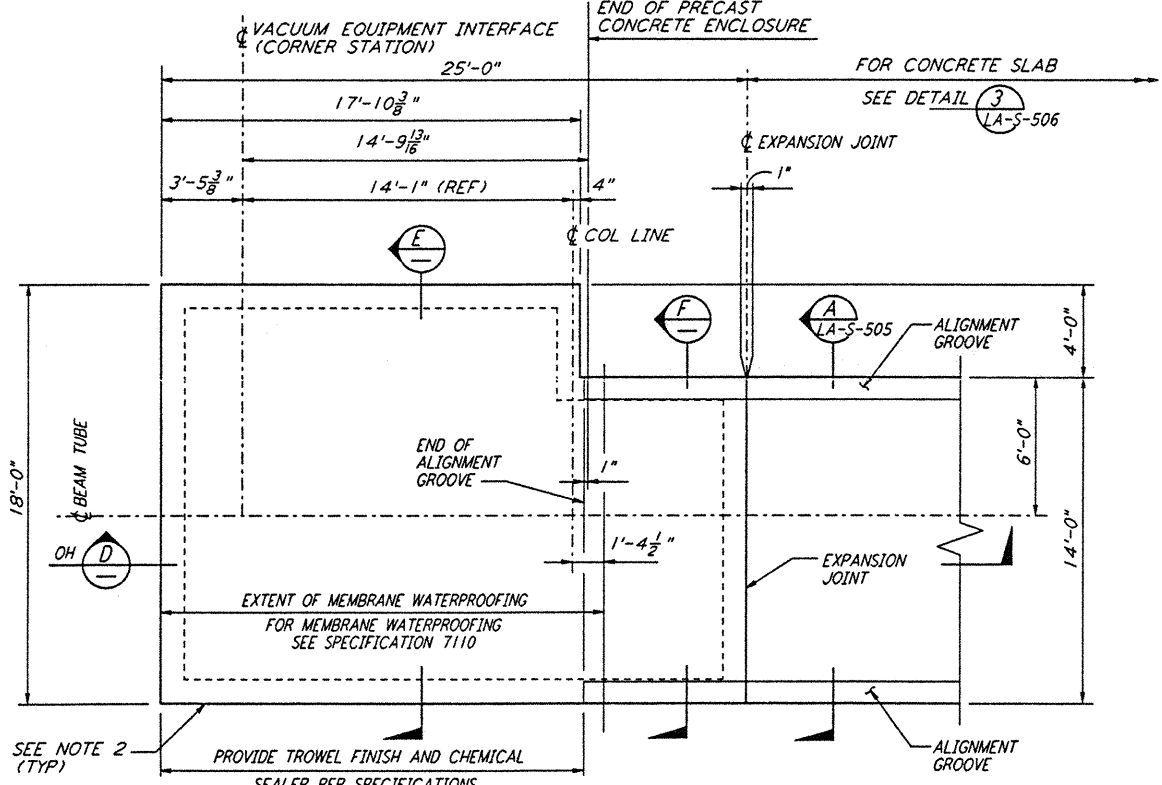


DETAIL 2 REF
 1/4" = 1'-0"
 LA-S-505 LA-S-504

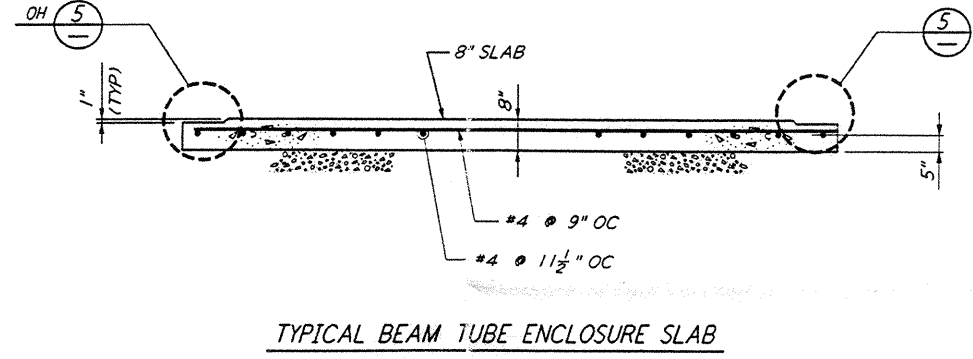


DETAIL 3 REF
 1/4" = 1'-0"
 LA-S-505 LA-S-504

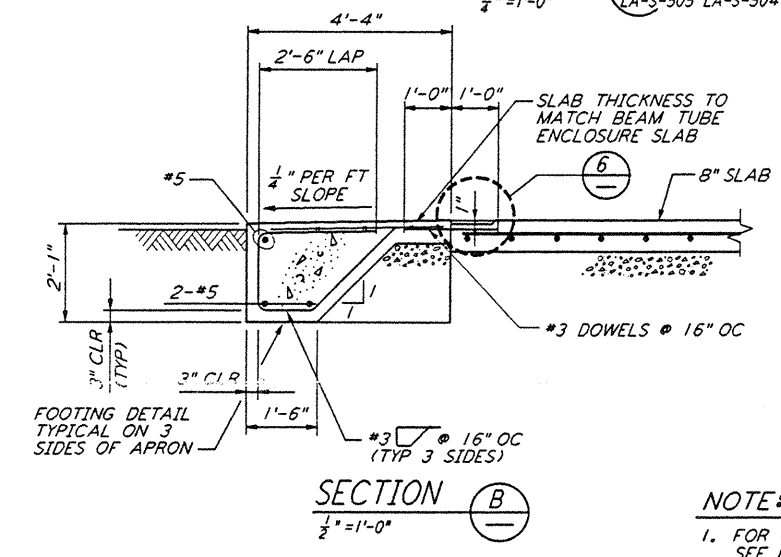
NOTE:
 1. MID STATION FOUNDATION SHOWN IS FOR SOUTHWEST ARM. FOR SOUTHEAST ARM MID STATION FOUNDATION ORIENTATION SEE DETAIL 7 (LA-S-506)



DETAIL 4 REF
 1/4" = 1'-0"
 LA-S-505 LA-S-504

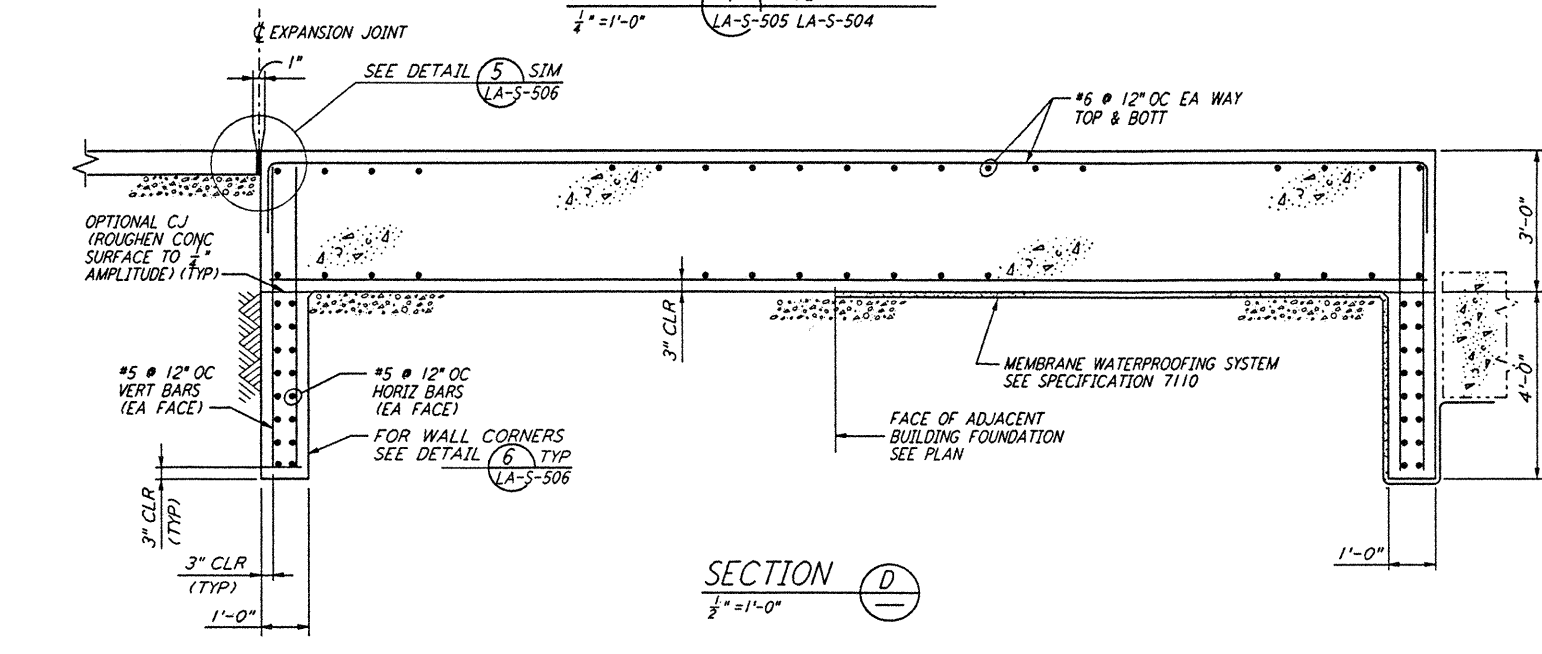
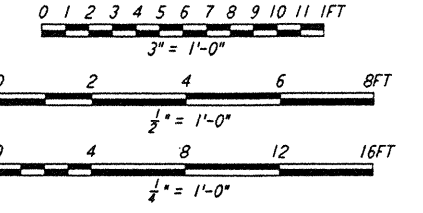


TYPICAL BEAM TUBE ENCLOSURE SLAB
 SECTION A REF
 1/2" = 1'-0"
 LA-S-505 LA-S-506

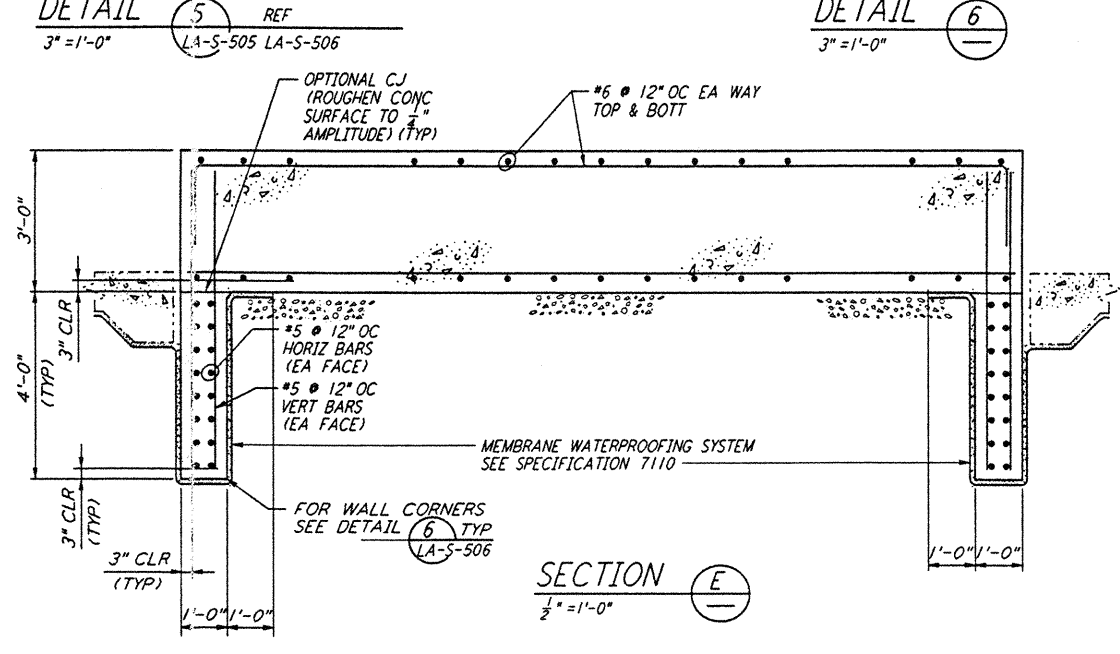


SECTION B
 1/2" = 1'-0"

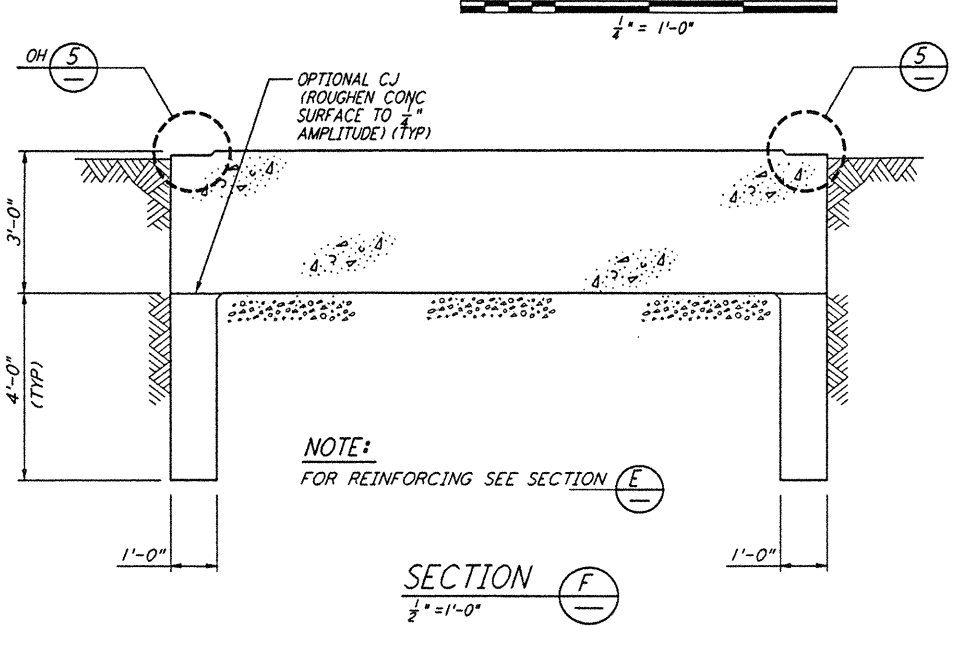
NOTE:
 1. FOR GENERAL NOTES, ABBREVIATIONS AND LEGEND SEE DRAWING LA-S-501.
 2. ALL EXTERIOR VERTICAL SURFACES OF FOUNDATIONS SHALL BE FORMED.



SECTION D
 1/2" = 1'-0"



SECTION E
 1/2" = 1'-0"

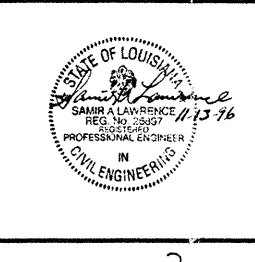


SECTION F
 1/2" = 1'-0"

NOTE:
 FOR REINFORCING SEE SECTION E

NO.	DATE	BY	CHKD	ENGR	PRJ	DESCRIPTION

ISSUED FOR CONSTRUCTION	
DRAWN	MCS 11-15-96
CHECKED	SDA 11-15-96
ENGINEER	SDA 11-15-96
PROJ	SDA 01/16/96



PARSONS
 100 WEST WALNUT STREET
 PASADENA, CALIFORNIA

LIGO
 CALIFORNIA INSTITUTE OF TECHNOLOGY
 MASSACHUSETTS INSTITUTE OF TECHNOLOGY

LASER INTERFEROMETER
 GRAVITATIONAL-WAVE OBSERVATORY
 BEAM TUBE ENCLOSURE - LIVINGSTON, LA

STRUCTURAL
 BEAM TUBE ENCLOSURE
 SECTIONS & DETAILS
 SHEET 1

AS NOTED PPI 150969 8094
LA-S-505

This document and the design it covers are the property of PARSONS. They are loaned only with the borrower's expressed written agreement that they will not be reproduced, copied, loaned, exhibited, or used in any other way, except by written consent from PARSONS to the borrower.

PLOT FILE: C:\LIGO\20\1170_537\BDR_CIVIL\150969\BDR\150969.DWG

PLOT FILE: C:\LIGO\20\1170_537\BDR_CIVIL\150969\BDR\150969.DWG