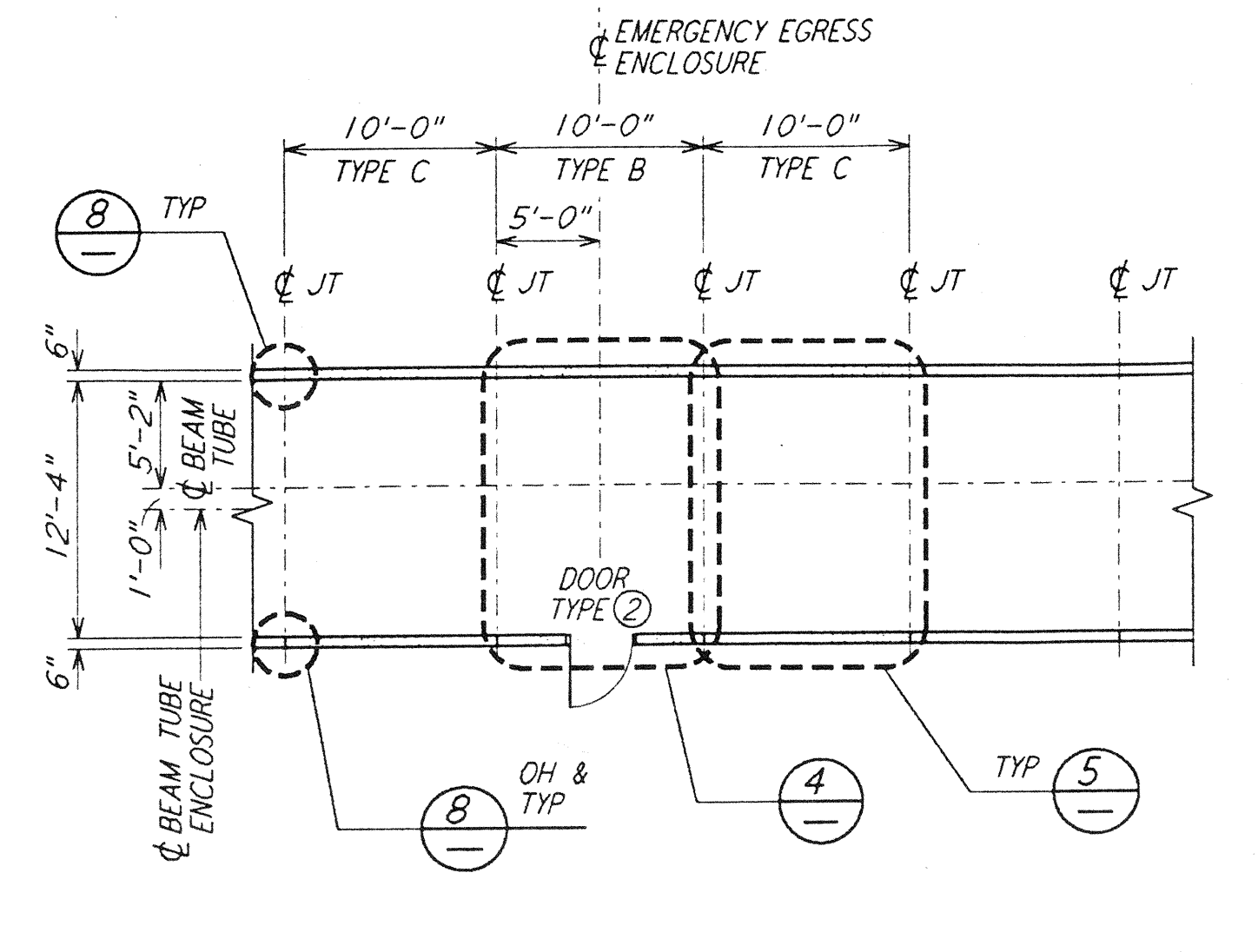
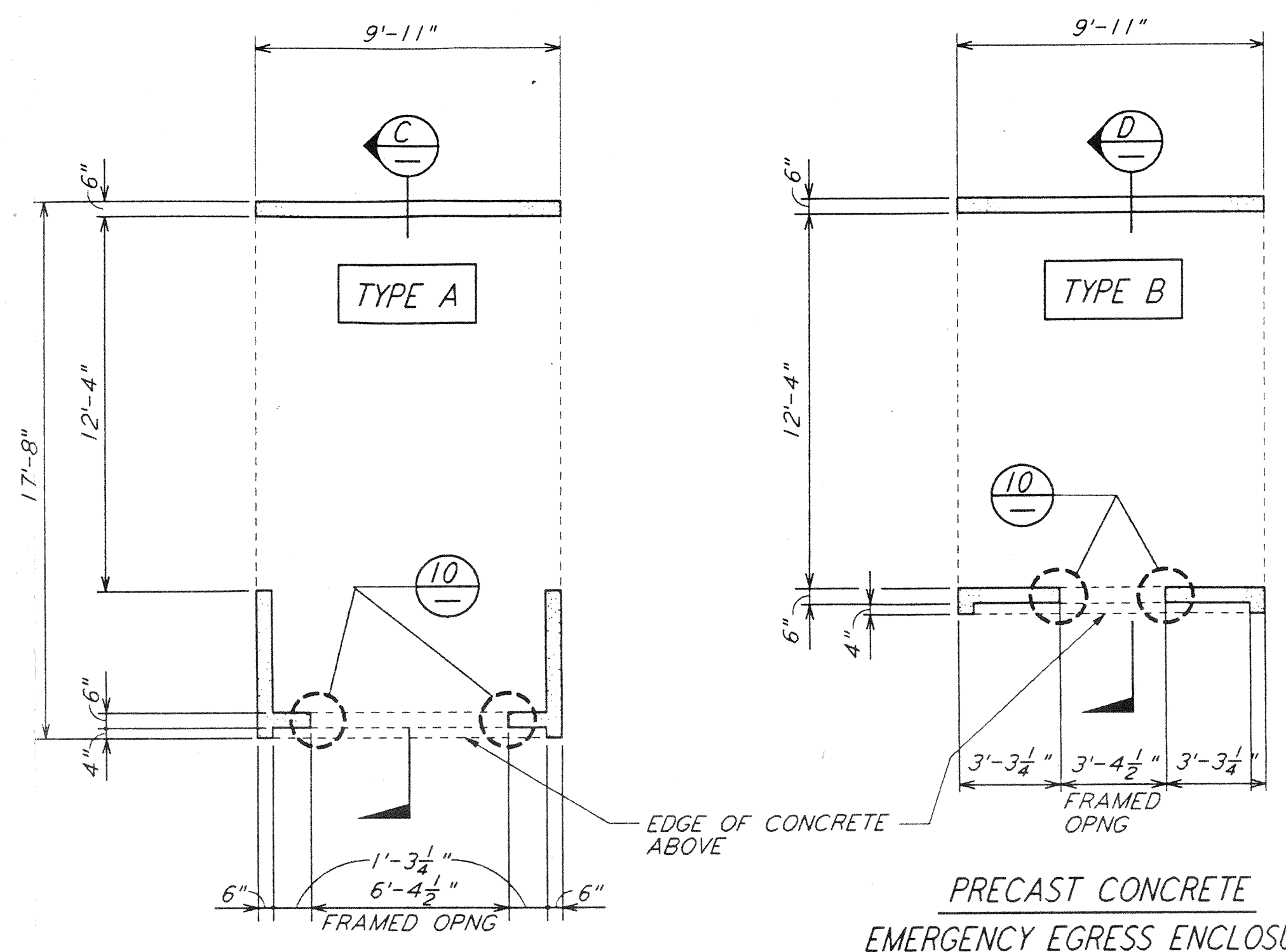


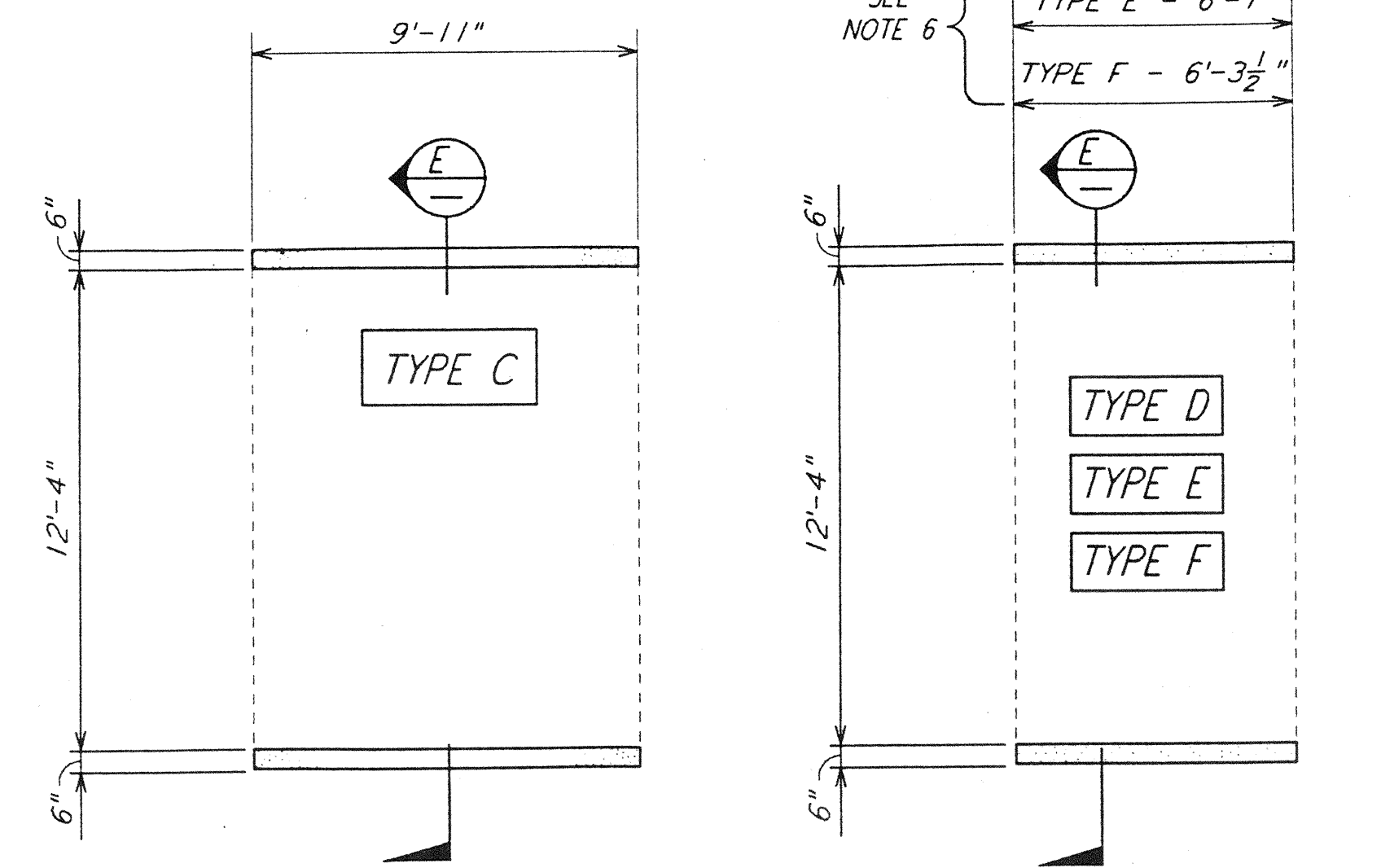
PLAN AT SERVICE ENTRANCE (1) REF
 LA-S-503 LA-S-502
 1/4" = 1'-0"



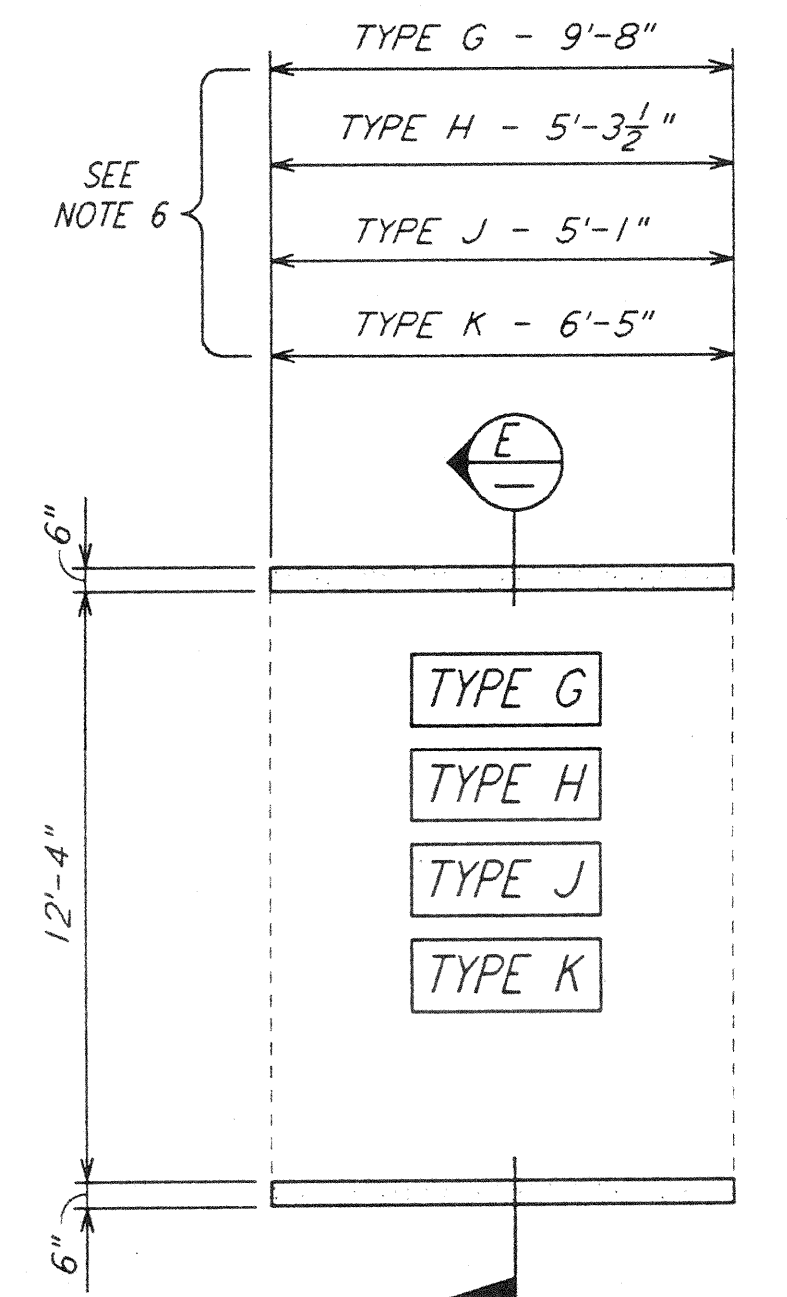
PLAN AT EMERGENCY EGRESS (2) REF
 LA-S-503 LA-S-502
 1/8" = 1'-0"



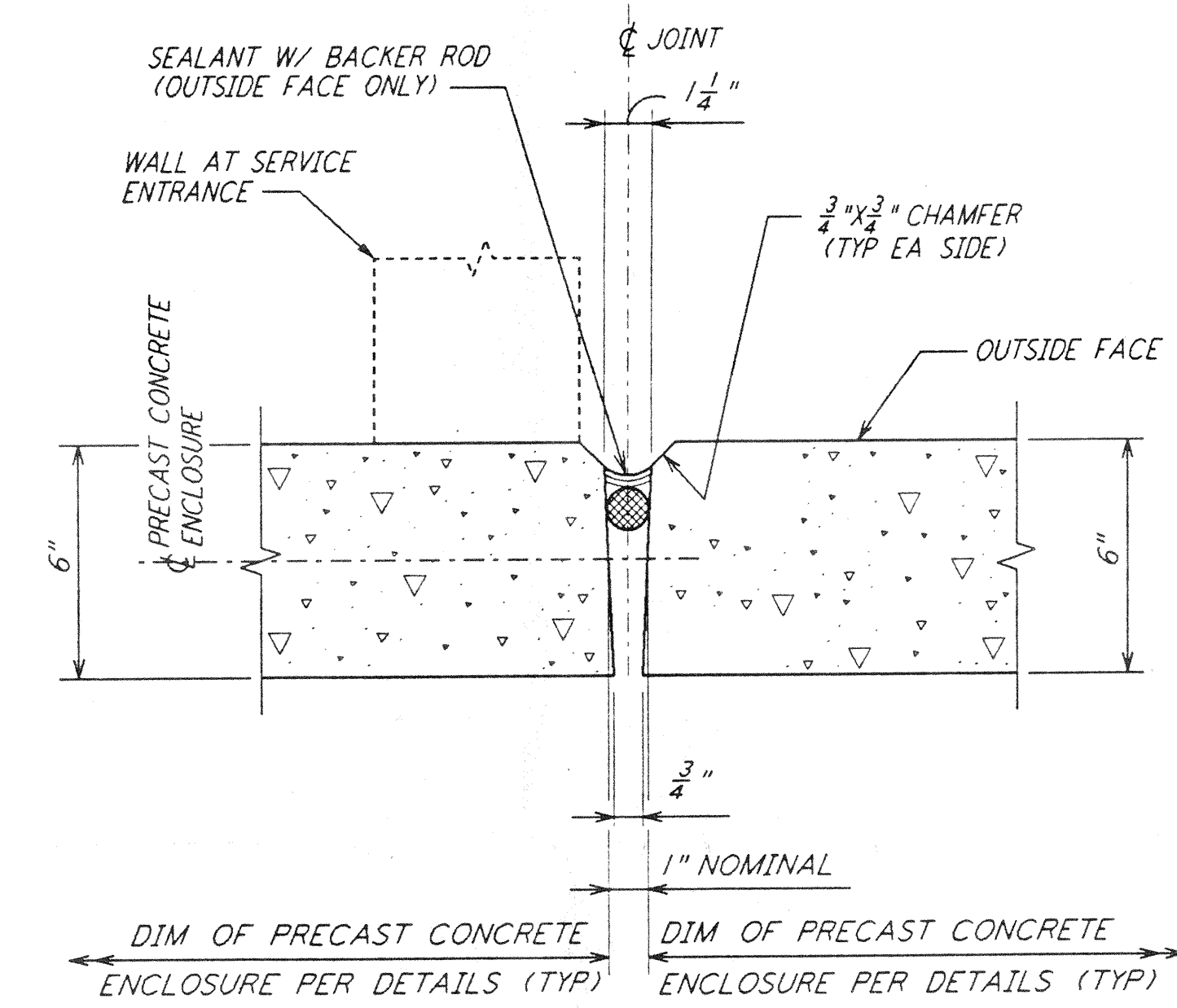
PRECAST CONCRETE EMERGENCY EGRESS ENCLOSURE
 DETAIL (4) REF
 1/4" = 1'-0"



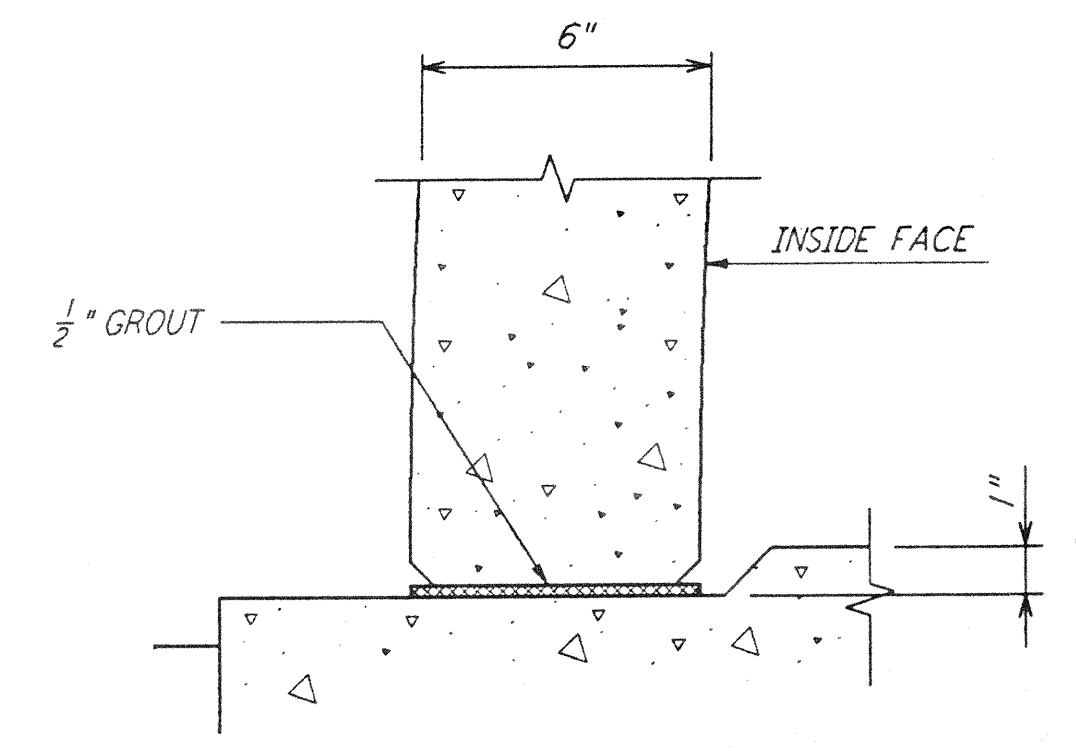
TYPICAL PRECAST CONCRETE ENCLOSURE
 DETAIL (5) REF
 1/4" = 1'-0"



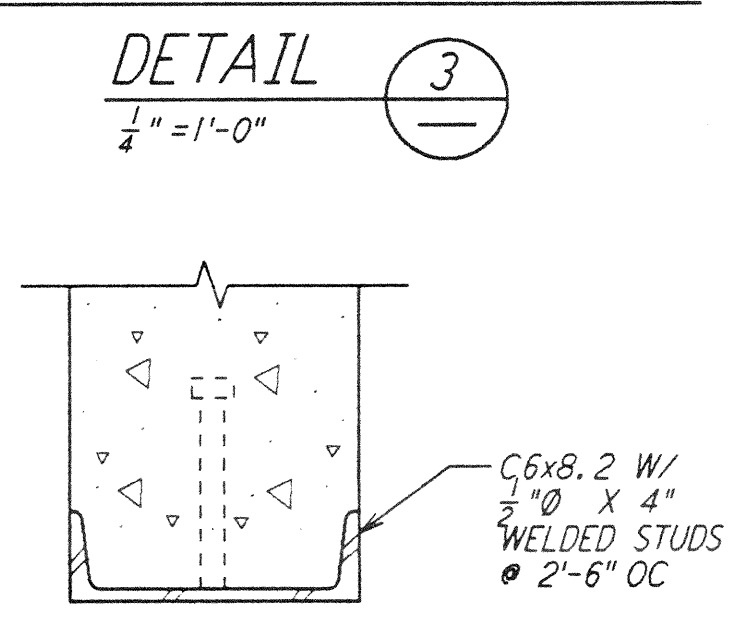
DETAIL (7) REF
 LA-S-503 LA-S-502
 1/4" = 1'-0"



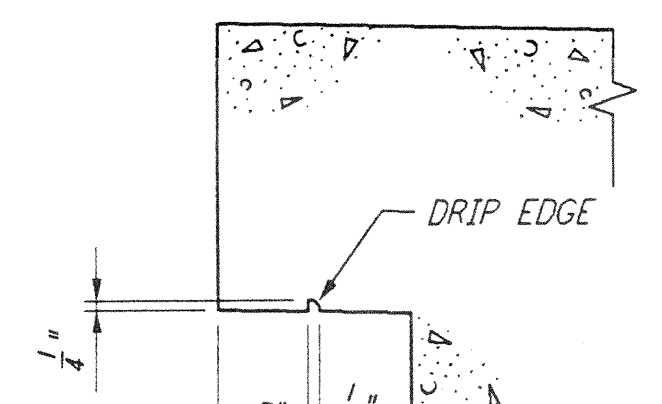
DETAIL (8) REF
 LA-S-503 LA-S-502
 3" = 1'-0"



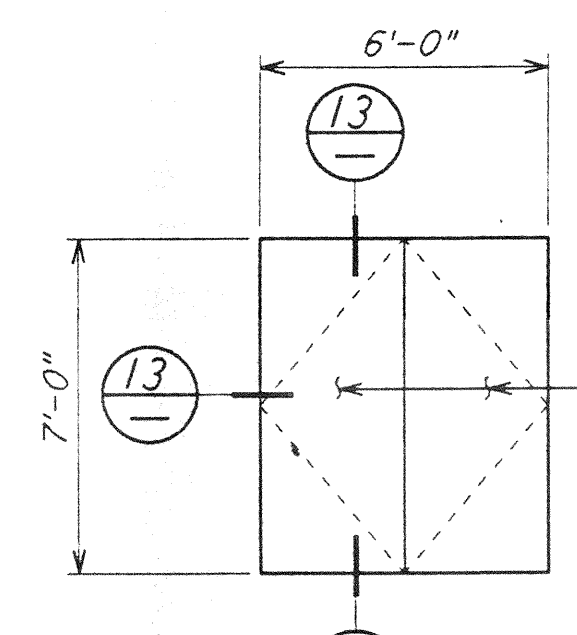
DETAIL (9) REF
 LA-S-503 LA-S-502
 3" = 1'-0"



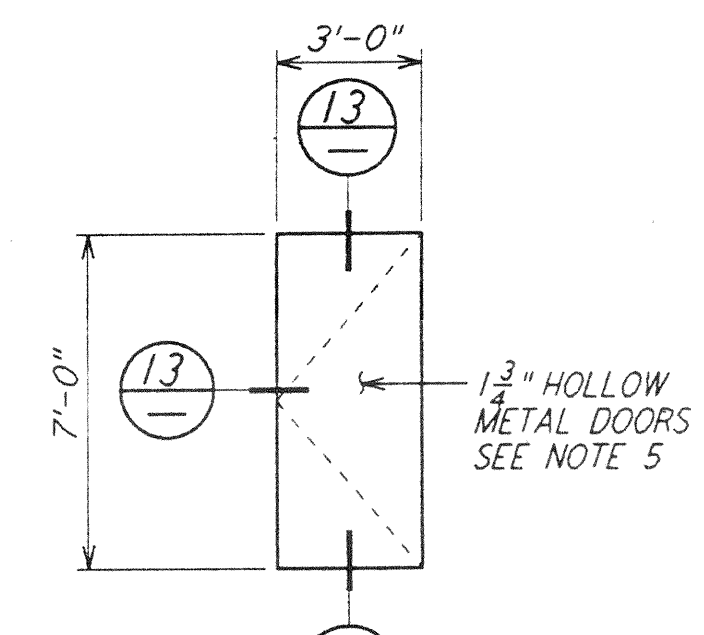
DETAIL (10) REF
 LA-S-503 LA-S-502
 3" = 1'-0"



DETAIL (11) REF
 LA-S-503 LA-S-502
 3" = 1'-0"

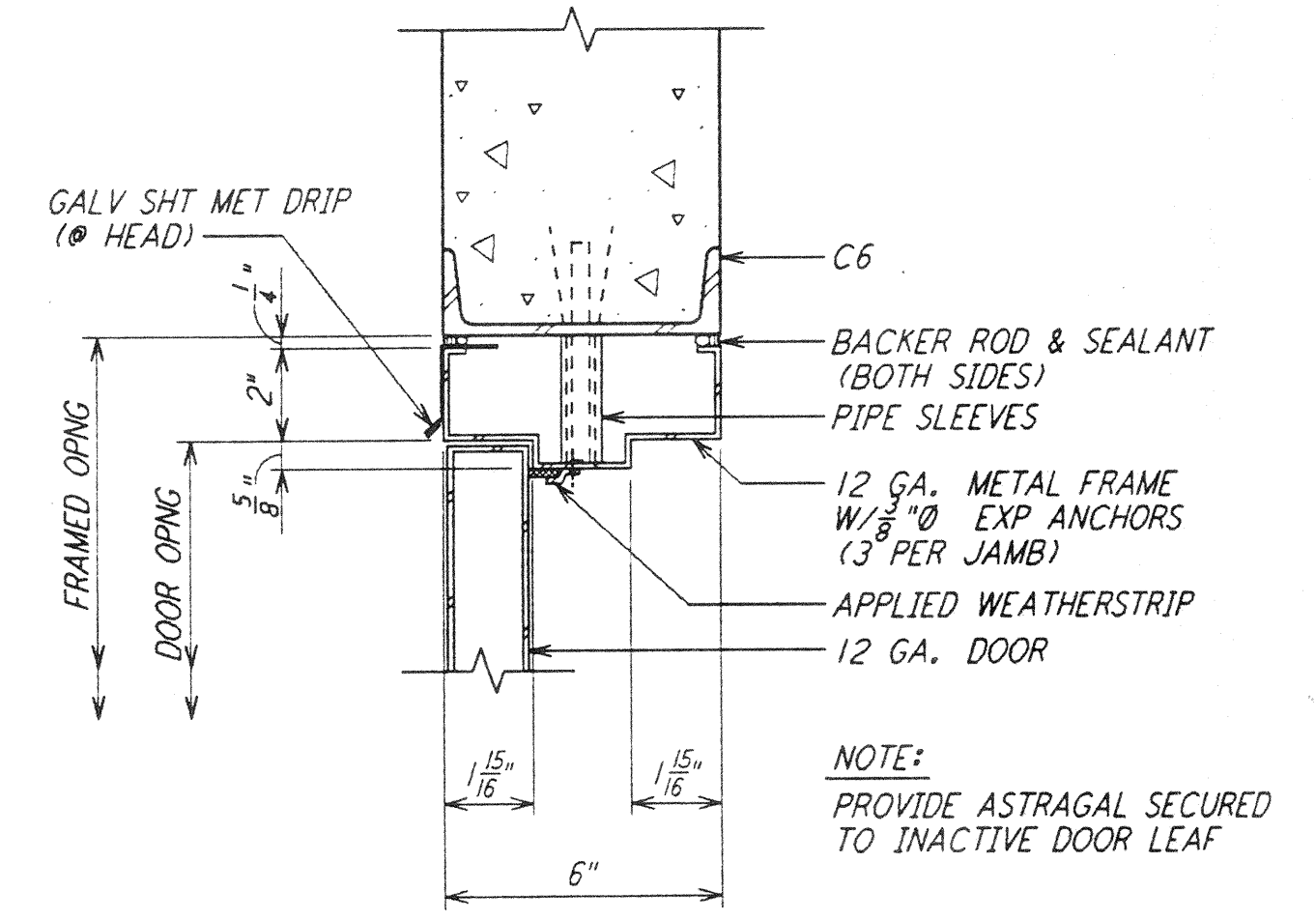


DOOR TYPE (1) REF
 LA-S-503 LA-S-502
 7'-0" = 1'-0"

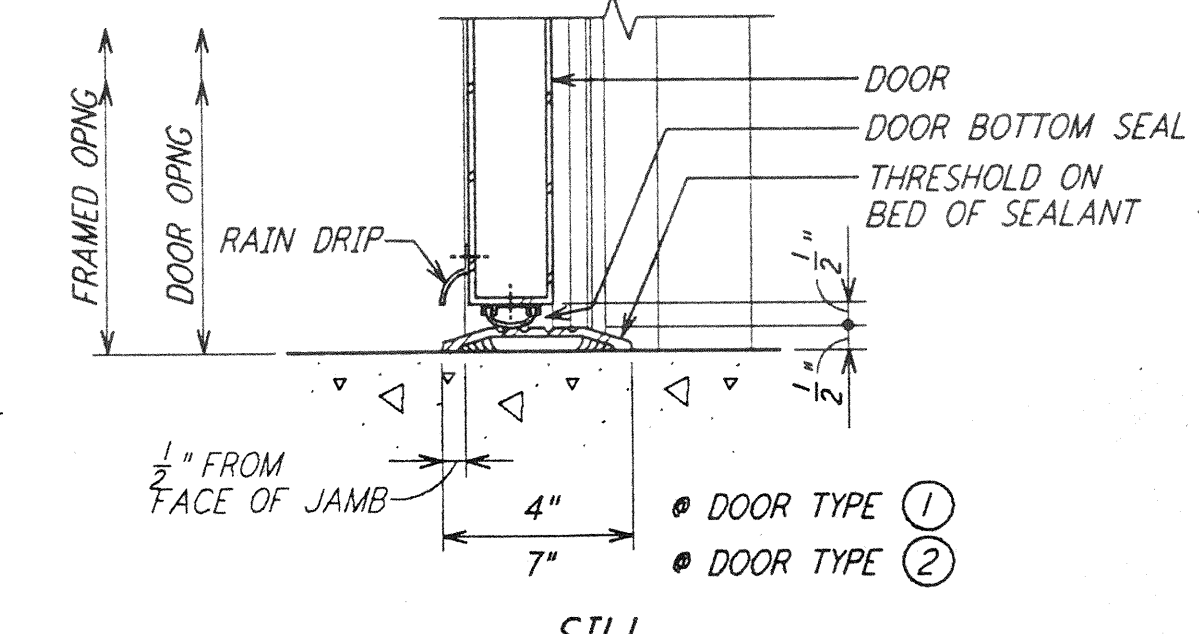


DOOR TYPE (2) REF
 LA-S-503 LA-S-502
 7'-0" = 1'-0"

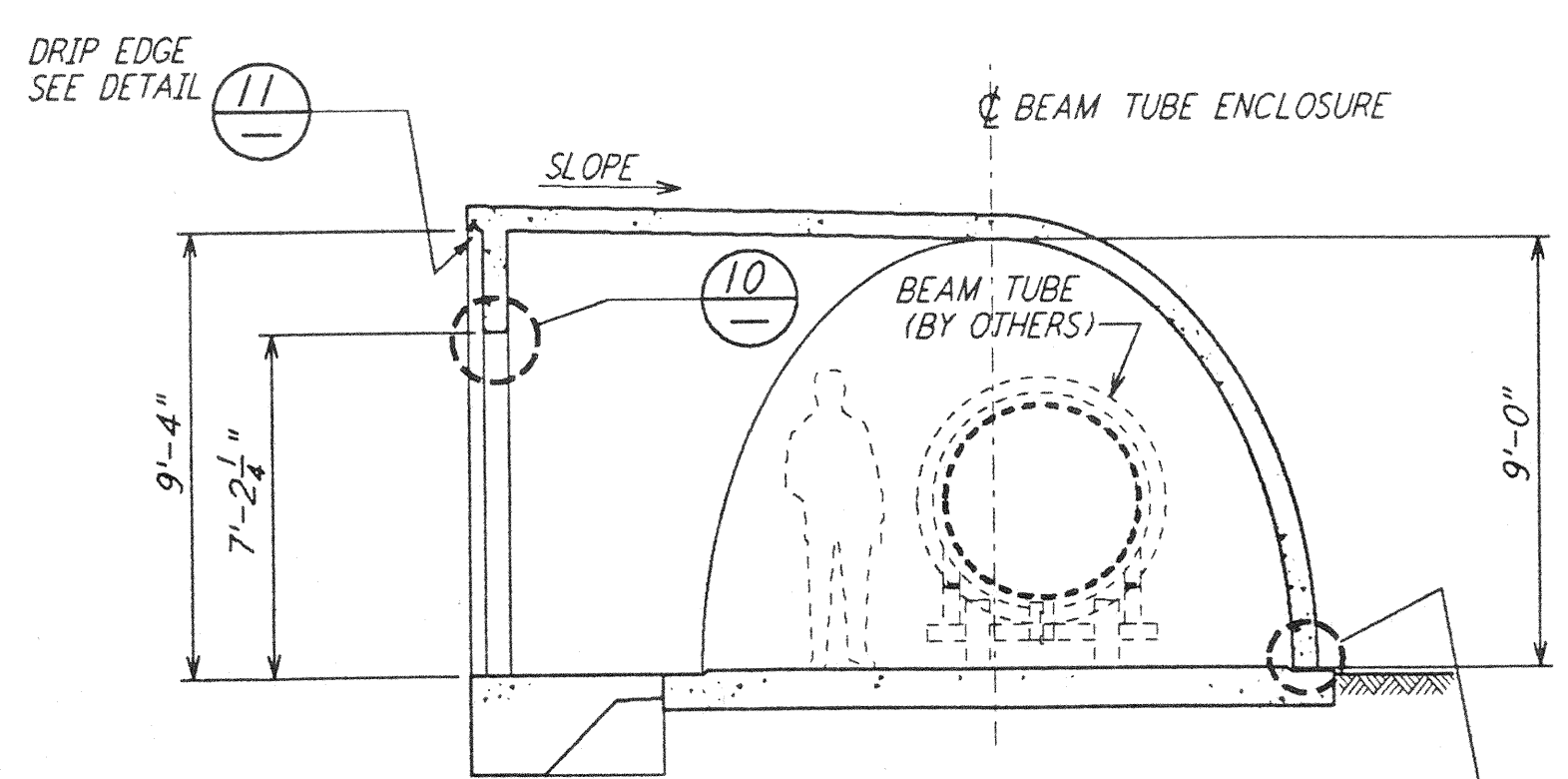
DOOR TYPES (12) MTS



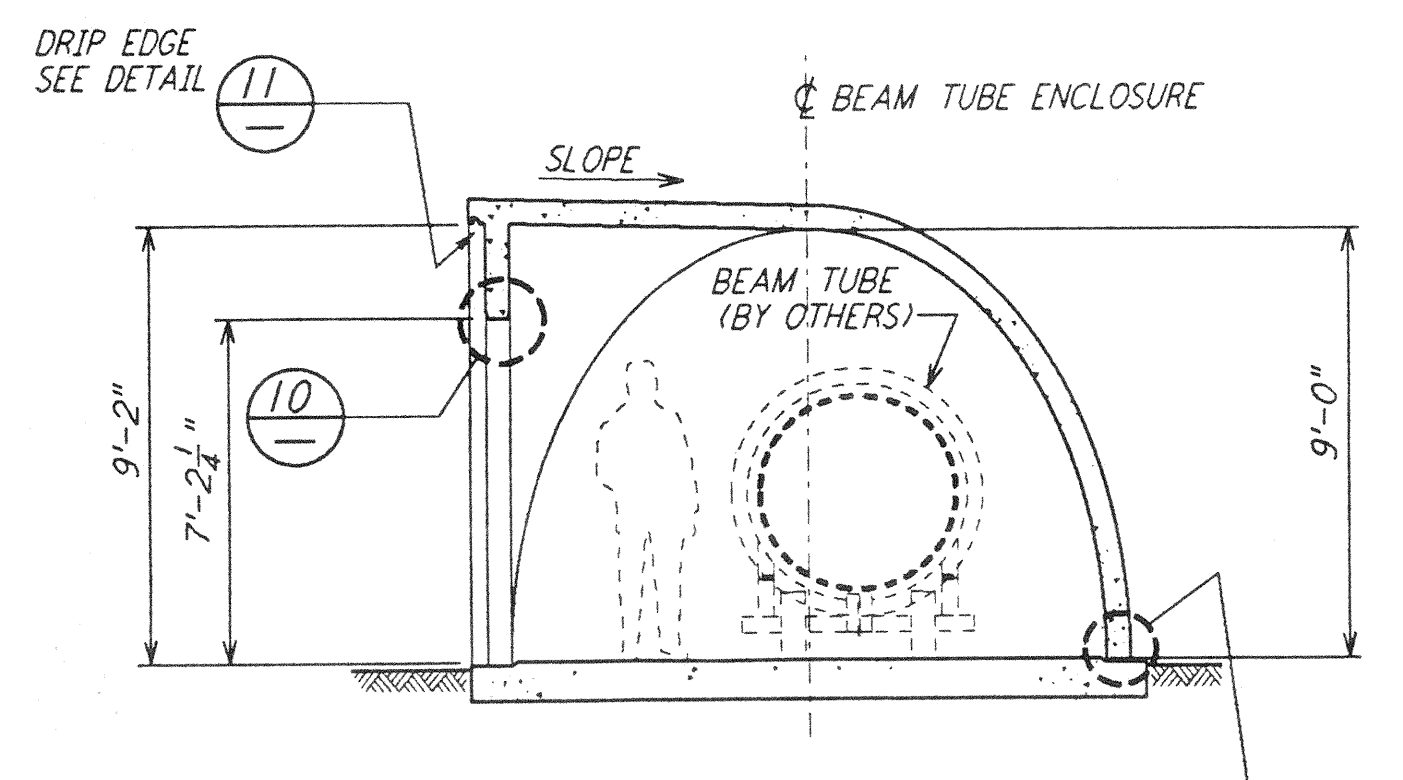
JAMB (HEAD SIM) DETAIL (13) REF
 LA-S-503 LA-S-502
 3" = 1'-0"



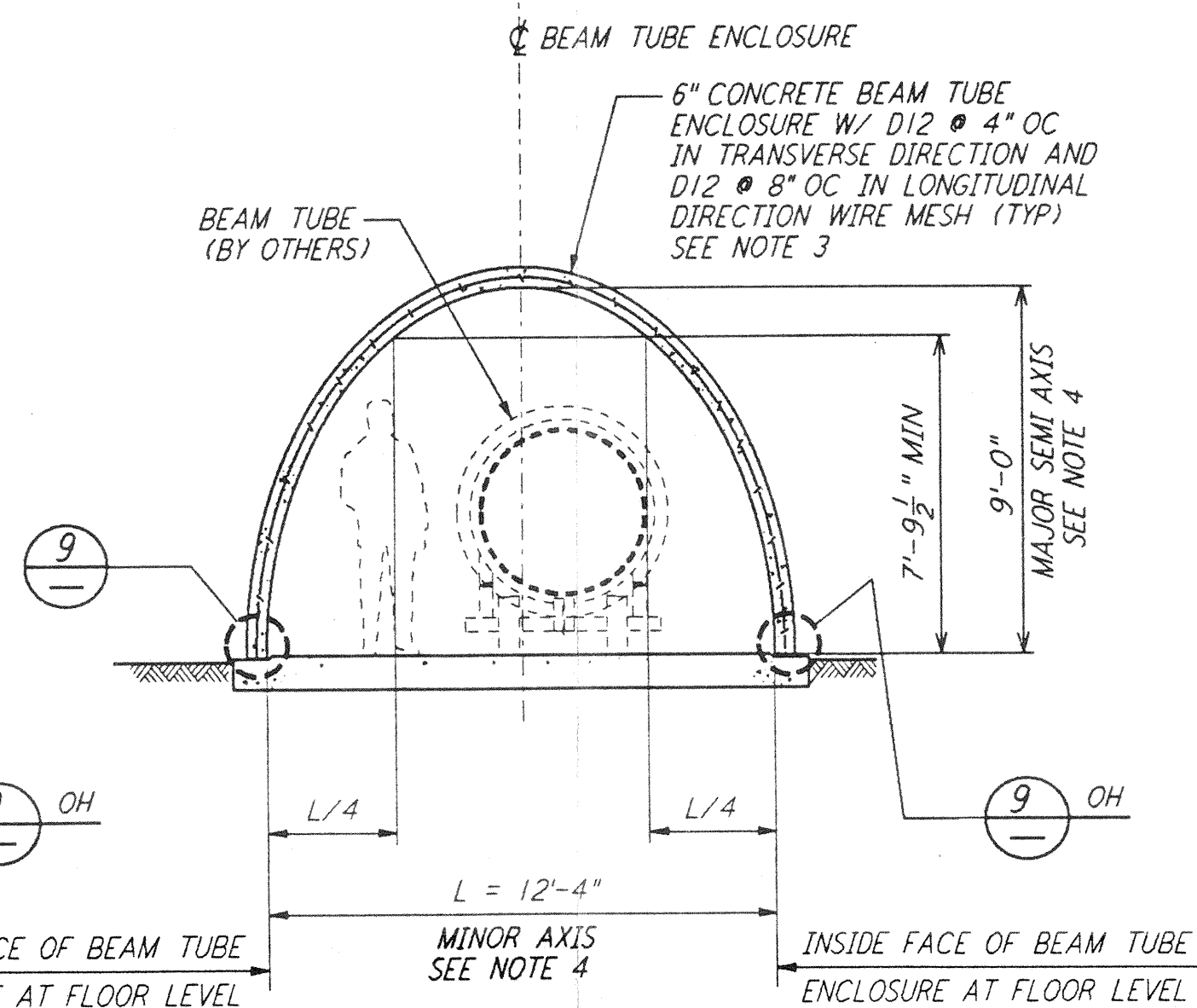
SILL DETAIL (14) REF
 LA-S-503 LA-S-502
 3" = 1'-0"



SECTION (C) REF
 LA-S-503 LA-S-502
 1/4" = 1'-0"

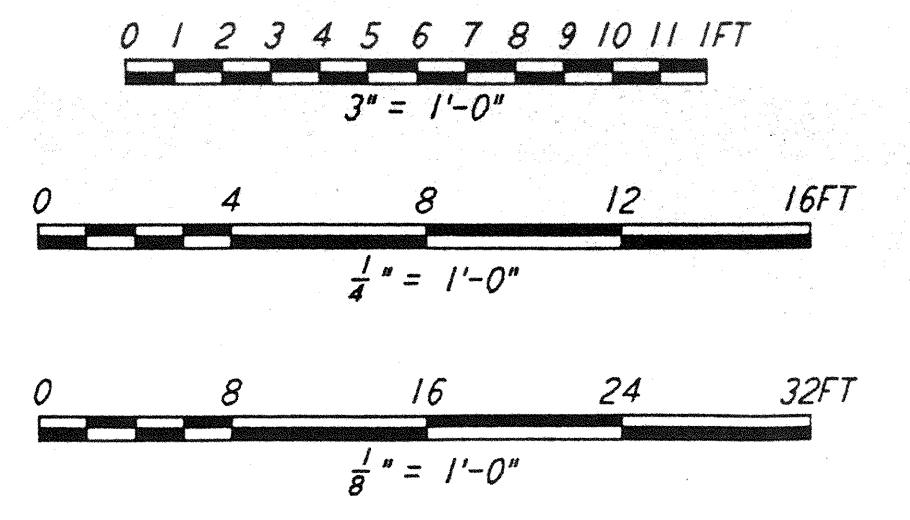


SECTION (D) REF
 LA-S-503 LA-S-502
 1/4" = 1'-0"



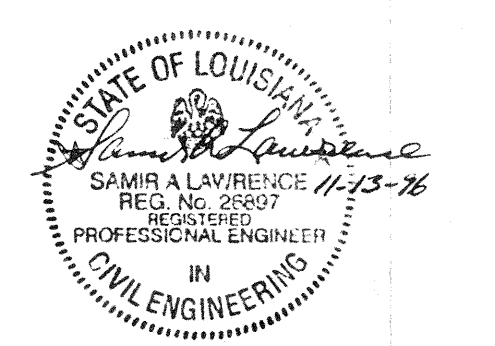
SECTION (E) REF
 LA-S-503 LA-S-502
 1/4" = 1'-0"

- NOTES:
- FOR GENERAL NOTES, ABBREVIATIONS AND LEGEND SEE DRAWING LA-S-501.
 - SPACERS SHALL BE ELIMINATED WHEN EXPANSION JOINT BETWEEN PRECAST SEGMENTS IS WITHIN 3 FEET FROM THE EXPANSION JOINT IN THE FOUNDATION SLAB.
 - REINFORCEMENT FOR ALL ELEMENTS OF PRECAST CONCRETE ENCLOSURES SHALL BE DESIGNED BY THE CONTRACTOR AND SHALL BE APPROVED BY THE CONSTRUCTION MANAGER. REINFORCEMENT SHOWN IS FOR BID PURPOSE ONLY.
 - DIMENSIONS ARE FOR A SEMI-ELLIPTICAL CROSS SECTION. CONTRACTOR MAY SLIGHTLY DEVIATE FROM THIS SHAPE PROVIDED ALL SHOWN DIMENSIONS AND CLEARANCES ARE SATISFIED.
 - ALL DOORS, DOOR HARDWARES AND INSTALLATION OF DOORS TO BEAM TUBE ENCLOSURE ARE INCLUDED IN THIS CONTRACT.
 - DIMENSIONS SHOWN ARE APPROXIMATE. FINAL DIMENSIONS SHALL BE DETERMINED AFTER AWARD OF CONTRACT. FINAL DIMENSIONS WILL BE BETWEEN 5'-0" AND 9'-11".



NO.	DATE	BY	CHKD	ENGR	PROJ	DESCRIPTION

NO.	DATE	BY	CHKD	ENGR	PROJ	DESCRIPTION



PARSONS
 100 WEST WALNUT STREET
 PASADENA, CALIFORNIA

LIGO
 CALIFORNIA INSTITUTE OF TECHNOLOGY
 MASSACHUSETTS INSTITUTE OF TECHNOLOGY

LASER INTERFEROMETER
 GRAVITATIONAL-WAVE OBSERVATORY
 BEAM TUBE ENCLOSURE - LIVINGSTON, LA

TITLE	SCALE	CONTRACT NUMBER	PROJECT NUMBER
STRUCTURAL BEAM TUBE ENCLOSURE PLANS, SECTIONS & DETAILS	AS NOTED	PPI50969	8094
SHEET NUMBER	REVISIONS		
LA-S-503			