

FACILITY REQUIREMENTS	
NITROGEN	
SUPPLY PRESSURE	80 PSI
MINIMUM SUPPLY PRESSURE	7 PSI
MAXIMUM SUPPLY PRESSURE	80 PSI
FLOWRATE	20 LPM @ 7 PSI
.25 S/S SWAGelok COMPRESSION	
PNEUMATIC	
MAXIMUM PRESSURE	80 PSI
PROCESS COOLING WATER	
MAXIMUM PRESSURE	80 PSI
MINIMUM PRESSURE DIFFERENTIAL	30 PSI
TYPICAL FLOWRATE	3.76 GPM
RECOMMENDED SUPPLY TEMP.	20°C-25°C
.50 NPTF CONNECTION	
ELECTRICAL	
SUPPLY	460V 3PH / 60Hz
FULL LOAD AMPERAGE	35.1 FLA
RECOMMENDED SERVICE	(SEE SCHEMATIC)

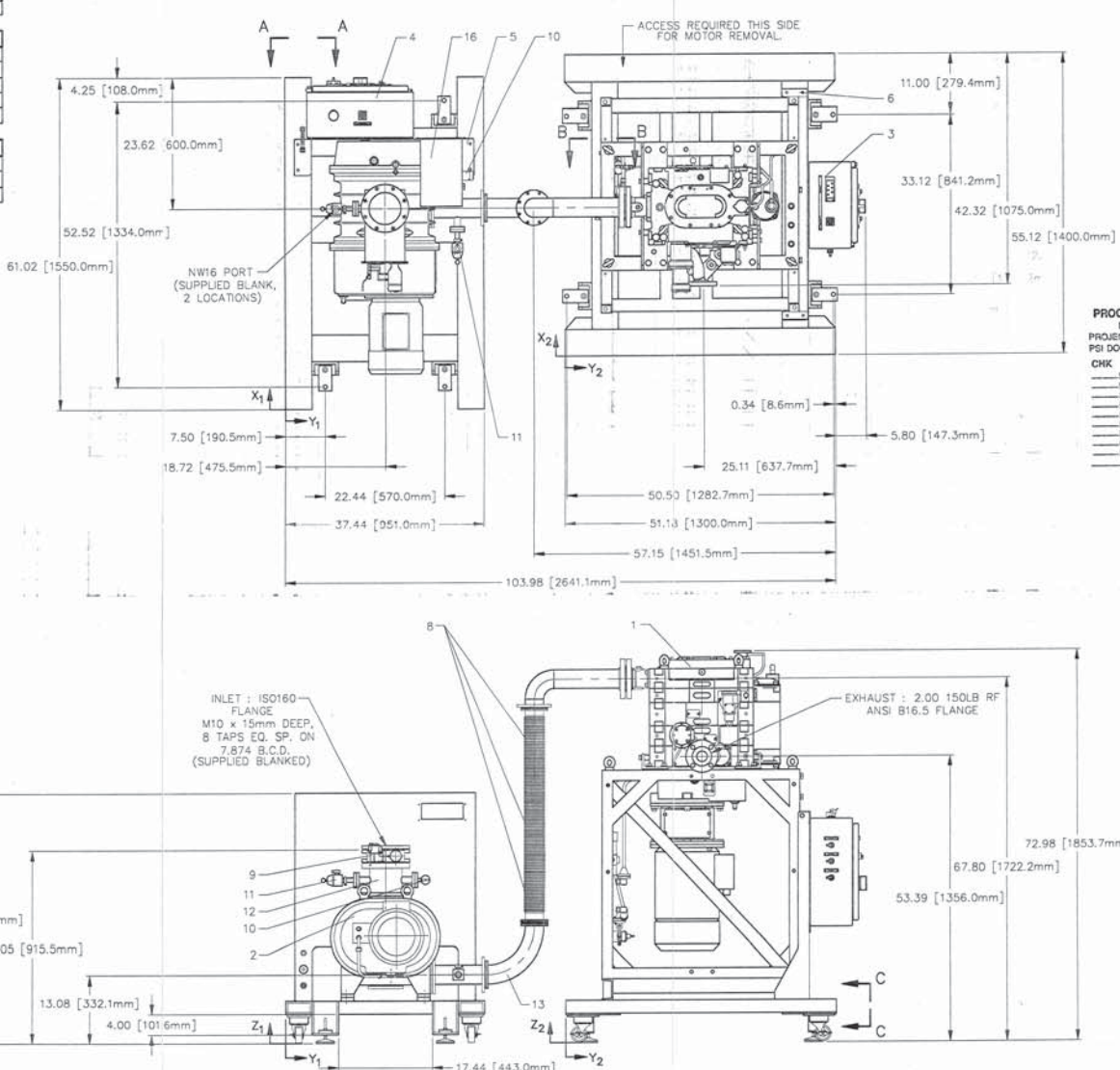
D

C

B

A

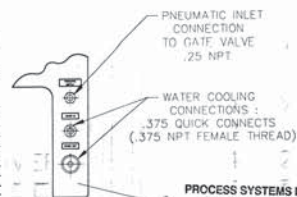
CENTER OF GRAVITY				
DESCRIPTION	WT	X	Y	Z
EH2600/CART	962.LBS.	33.12	18.72	16.81
EDP200/CART	2117.LBS.	27.56	25.59	45.98



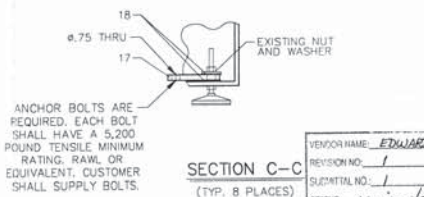
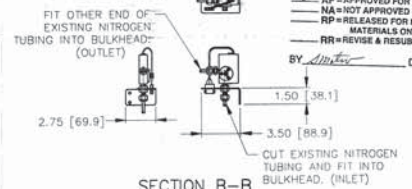
PART NO.	QTY.	DESCRIPTION	DWG. NO.	MATERIAL
1	1	CHEMICAL PUMP : EDP200		
2	1	BOOSTER PUMP : EH2600		
3	1	ELECTRICAL ENCLOSURE		
4	1	ELECTRICAL ENCLOSURE		
5	1	MOUNTING BRACKET : ELECT. ENCLOSURE / FACILITIES	C3209	
6	1	MOUNTING BRACKET : ELECTRICAL ENCLOSURE	C3210	
7	1	N2 INLET FLOWSWITCH KIT : UT0000401	B3472	
8	3	BELLOWS : ISO100 x 1 METER LONG		
9	1	GATE VALVE : ISO160 PNEUMATIC		
10	2	PRANI GAUGE : 2.75 CONFLAT		
11	2	ISOLATION VALVE : PVI6MK		
12	1	SPDOL : ISO160 x ISO160 W/ 2.75 CONFLAT PORTS	C3208	
13	1	ELBOW : ISO100		
14	1	WATER COOLING KIT : UT0000708	B2837	
15	1	NITROGEN FLOW KIT : UT0000707	B2836	
16	1	CONTROLLER : 937		
17	8	ANCHOR MOUNTING PLATE	A3639	
18	16	NEOPRENE WASHER : 1.75 O.D. x .125 THICK	A3531	

NOTE :  
 REFERENCE MANUAL FOR SPARE PARTS (ESPECIALLY SEALS AND GASKETS)  
 NITROGEN FLOWSWITCH KIT (PART NO. 7) TO BE MOUNTED IN NEAREST AVAILABLE LOCATION, IN RELATION TO EXISTING NITROGEN LINES. REMOVE LOCAL ELECTRICAL BOX (PART NO. 3) AND PLACE UNDER BRACKET (PART NO. 6), BEFORE SHIPPING.

PROCESS SYSTEMS INTERNATIONAL DOCUMENT REVIEW CHECKLIST	
PROJECT NAME:	E1000
PSI DOC. NO.:	V049-2-389
CHK	BY / DATE
PROJECT ENG	Am 7/1/96
MECHANICAL	
DESIGN	
ELECTRICAL	
PROCESS	
MFG. ENG	
MANUF	
O.A.	
DRAFTING	



PROCESS SYSTEMS INTERNATIONAL DOCUMENT APPROVAL CHECKLIST	
PROJECT NAME:	E1000
PSI DOC. NO.:	V049-2-389
NOTE:	THIS REVIEW DOES NOT RELIEVE THE DESIGNER OR CONTRACTOR OF ANY OBLIGATIONS UNDER THE FCIS OR CONTRACT.
FA	FINAL APPROVAL
AS	AS APP'D AS NOTED - REVISE & RESUBMIT
AF	APPROVED FOR FABRICATION
NA	NOT APPROVED
RP	RELEASED FOR PROCUREMENT OF MATERIALS ONLY
RR	REVISE & RESUBMIT
BY:	Am 7/1/96
DATE:	7/1/96



ANCHOR BOLTS ARE REQUIRED. EACH BOLT SHALL HAVE A 5,200 POUND TENSILE MINIMUM RATING. RAWL OR EQUIVALENT. CUSTOMER SHALL SUPPLY BOLTS.

VENDOR NAME: EDWARDS HI-VAC  
 REVISION NO.: 1  
 SUBMITAL NO.: 1  
 STATUS: review/approval

PSI DWG # V049-2-389 JUL 3 1996  
 JUL 09 1996  
 CUSTOMER SPEC. : V049-2-001

DO NOT SCALE DRAWING		EDWARDS	
ALL DIMENSIONS UNLESS OTHERWISE SPECIFIED ARE IN INCHES AND DECIMALS THEREOF. DIMENSIONS IN PARENTHESES ARE IN MILLIMETERS. <td colspan="2">EDWARDS HIGH VACUUM INTERNATIONAL GRAND ISLAND, NEW YORK 14057</td>		EDWARDS HIGH VACUUM INTERNATIONAL GRAND ISLAND, NEW YORK 14057	
1	ECR100031	07-01-96	MDW
Drawn	MDW	Date	01-24-96
Checked	MDW	Date	09-27-96
Approved	MDW	PSI No.	8490
Non-Std No.	NGR050100	Dwg. No.	D-4526-1
Customer	LIGO (PS)		