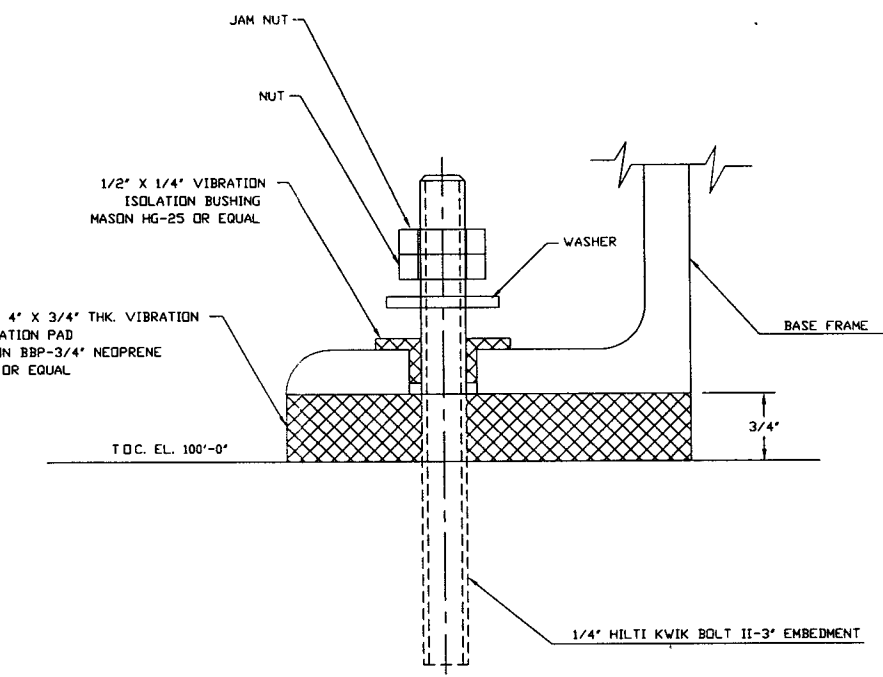
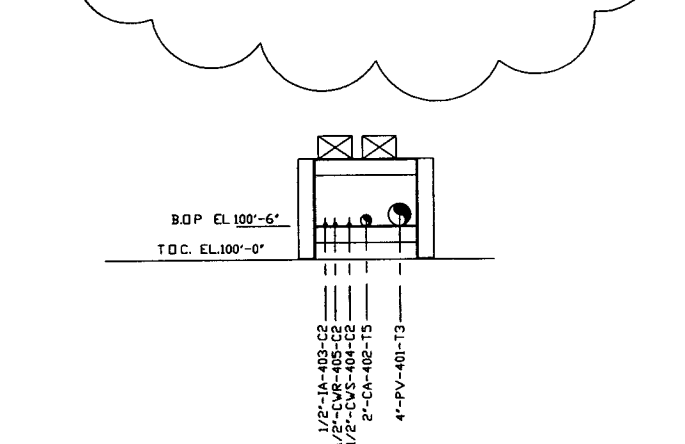
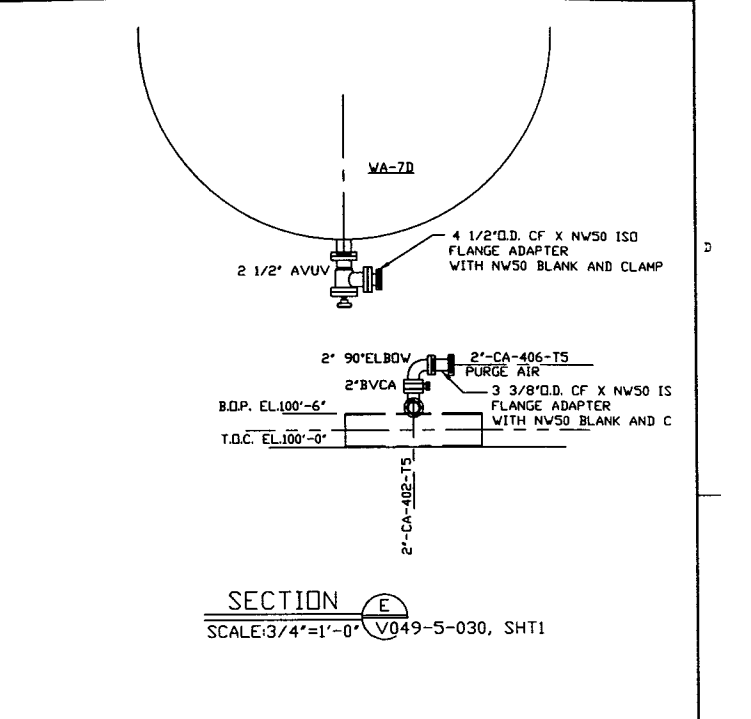
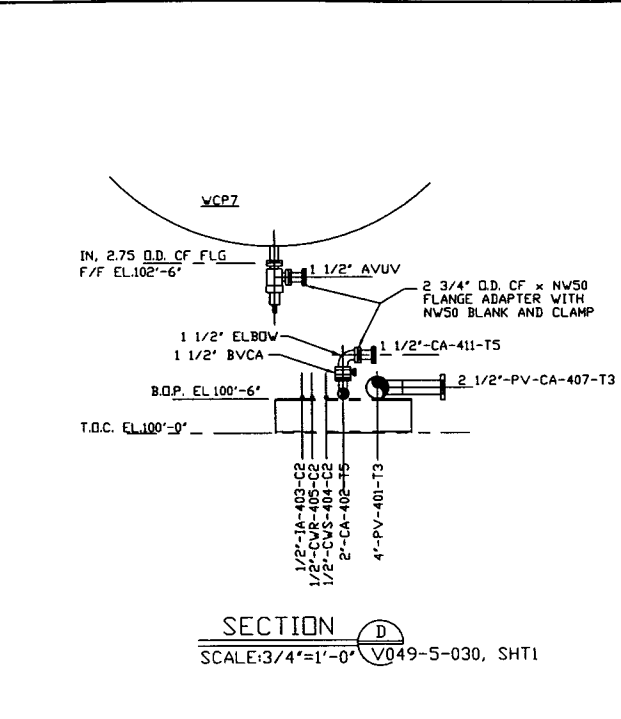
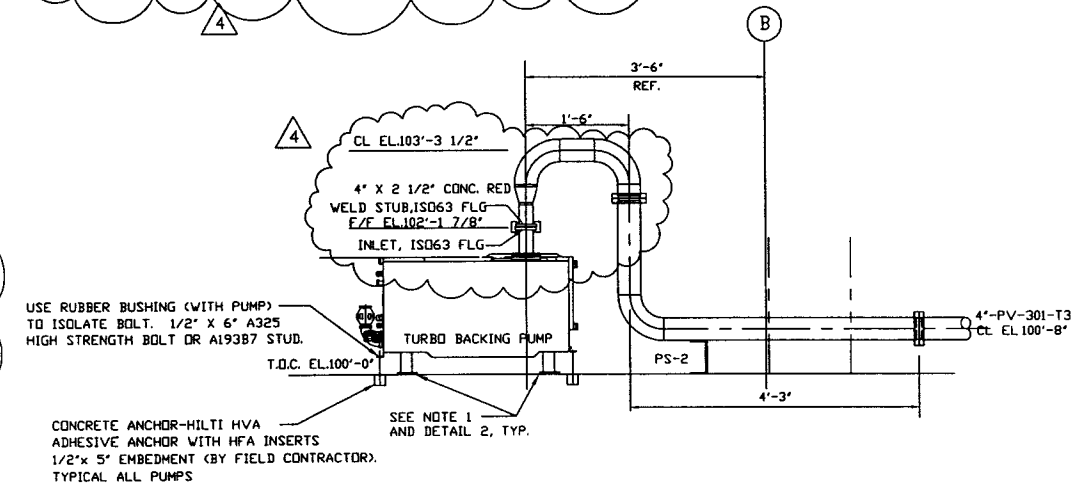
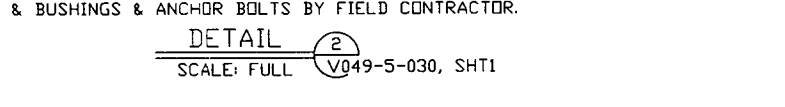
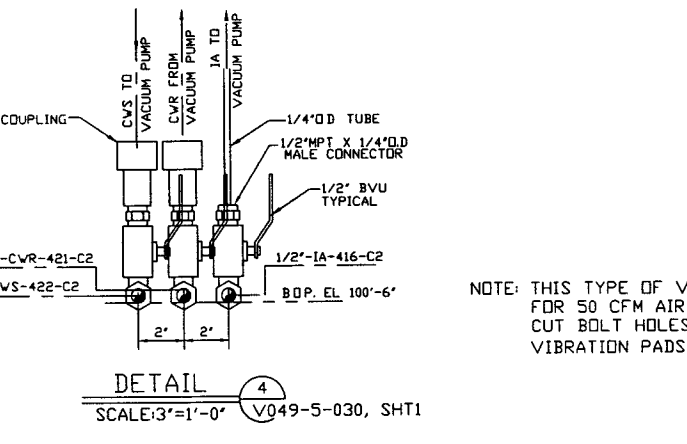
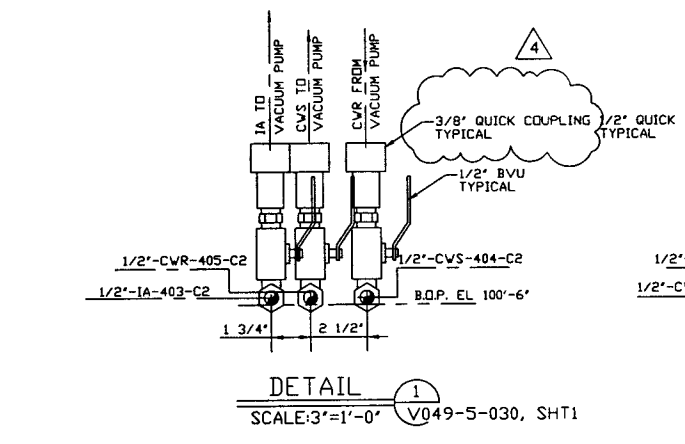
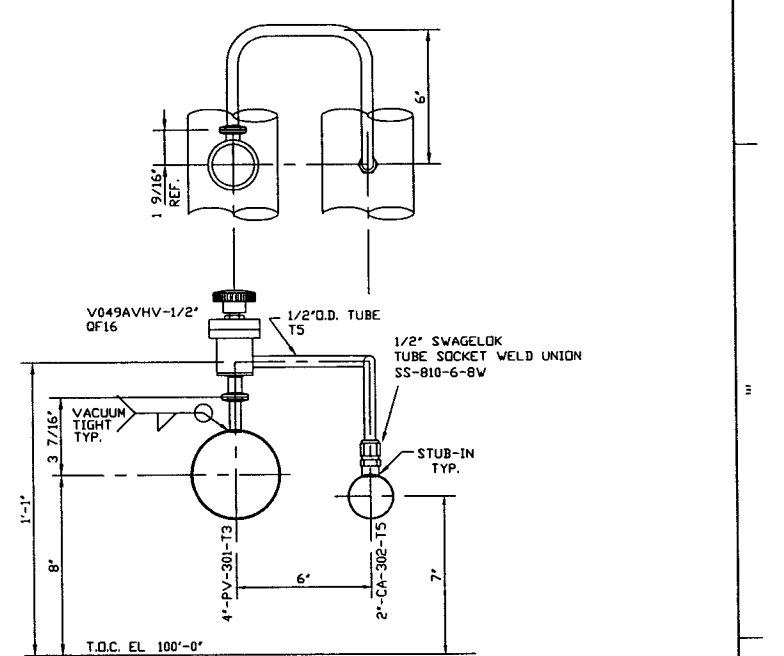


NOTES
 1) ADJUST PUMP CART LEVELING LEGS TO RAISE CART WHEELS OFF THE FLOOR. THE LEGS ARE TO REST ON THE 1/2" THICK VIBRATION ISOLATION PADS. DUREMETER 50 TYPICAL 4 LEGS PER CART.



NOTE: THIS TYPE OF VIBRATION PAD ASSEMBLY IS TO BE USED UNDER AIR COMPRESSOR SKID AND ELECTRICAL CABINETS FOR 50 CFM AIR COMPRESSOR USE 4 BOLTED POINTS. USE 2" x 4" x 3/4" PADS, TYPICAL. CUT BOLT HOLES TO SUIT. ANCHOR BOLT METAL IS NOT TO BE IN CONTACT WITH BASE FRAME METAL. VIBRATION PADS & BUSHINGS & ANCHOR BOLTS BY FIELD CONTRACTOR.



| | | | | | | | | | | | | |
|---|---|------------------------------|---|------|------------------------------------|------|-----|---------|------|---|----------|------|
| PROPRIETARY AND CONFIDENTIAL THIS DOCUMENT CONTAINS PROPRIETARY INFORMATION BELONGING TO PROCESS SYSTEMS INTERNATIONAL, INC. OR ITS AFFILIATED COMPANIES AND SHALL BE USED ONLY FOR THE PURPOSE FOR WHICH IT WAS SUPPLIED. IT SHALL NOT BE COPIED, REPRODUCED OR OTHERWISE USED, NOR SHALL SUCH INFORMATION BE FURNISHED IN WHOLE OR IN PART TO OTHERS EXCEPT IN ACCORDANCE WITH THE TERMS OF ANY AGREEMENT UNDER WHICH IT WAS SUPPLIED OR WITH THE PRIOR WRITTEN CONSENT OF PROCESS SYSTEMS INTERNATIONAL, INC. AND SHALL BE RETURNED UPON REQUEST. | V049-5-030 PIPING ARRANGEMENT PLAN LEFT END STATION | | UNLESS OTHERWISE SPECIFIED DIMENSIONS ARE IN INCHES TOLERANCES: FRACTIONAL ± ANGULAR/16 ± BEND ± TWO PLACE DECIMAL ± THREE PLACE DECIMAL ± FINISHED SURFACE RYS BREAK CORNERS D+ REMOVE ALL BURRS | 4 | AS-BUILT | RDC | GW | 5/22/98 | 0615 | PROCESS SYSTEMS INTERNATIONAL, INC. 20 WALKUP DR. WESTBOROUGH, MASSACHUSETTS 01581 USA PIPING ARRANGEMENT, SECTIONS LEFT END STATION WASHINGTON SITE LIGO VACUUM EQUIPMENT | | |
| | V049-5-007 EQUIPMENT ARRANGEMENT LEFT END STATION | | | 3 | REISSUED FOR CONSTRUCTION AS NOTED | DMW | RDC | REC | PV | | 06/06/97 | 0491 |
| | 110102 LIGO VACUUM EQUIPMENT END STATION | | | 2 | ISSUED FOR CONSTRUCTION | DMW | RDC | REC | RM | | 04/28/97 | 0440 |
| | | | | 1 | ISSUED FOR FDR UPDATE & BID | DMW | RDC | REC | RM | | 12/23/96 | 0356 |
| | | | | 0 | ISSUED FOR FDR | DMW | RDC | REC | GW | | 4/30/96 | 0153 |
| | | PI | PRELIMINARY DESIGN | | | | | | | | | |
| | | REV | DESCRIPTION | CHKD | DRWN | DATE | DE# | | | | | |
| | | SCALE: AS NOTED SHEET 1 OF 1 | | | | | | | | | | |

L190-D961188-04-V