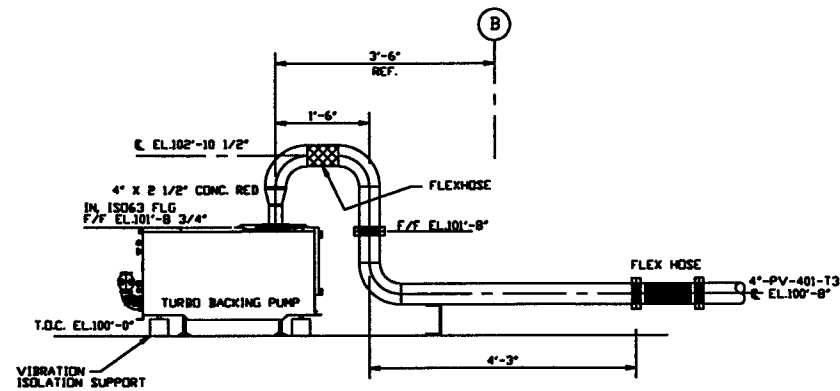
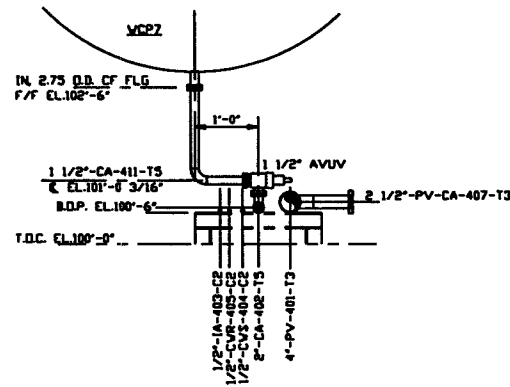


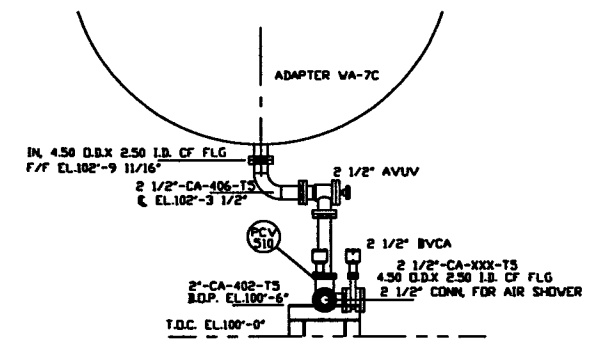
SECTION B
SCALE: 3/8"=1'-0" V049-5-030, SHT2



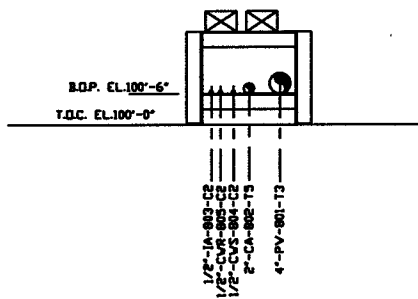
SECTION C
SCALE: 3/4"=1'-0" V049-5-030, SHT1



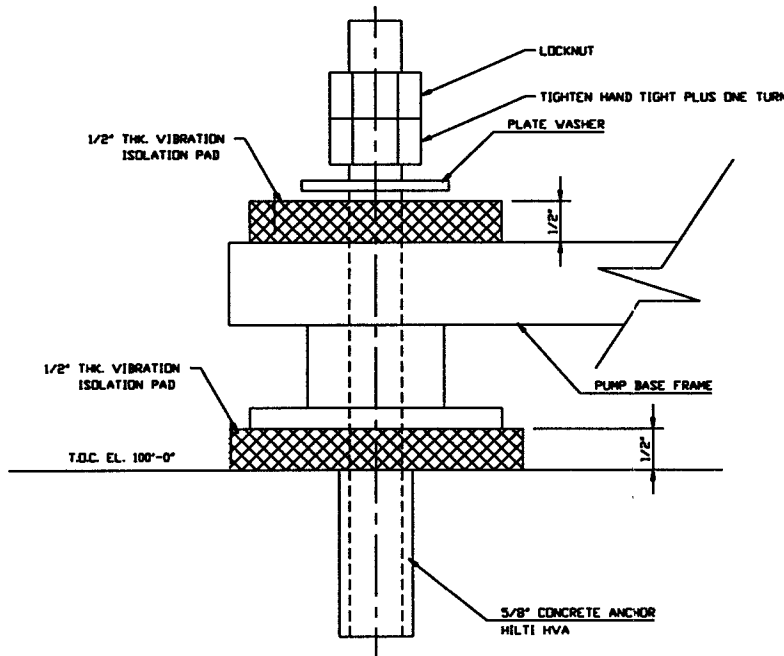
SECTION D
SCALE: 3/4"=1'-0" V049-5-030, SHT1



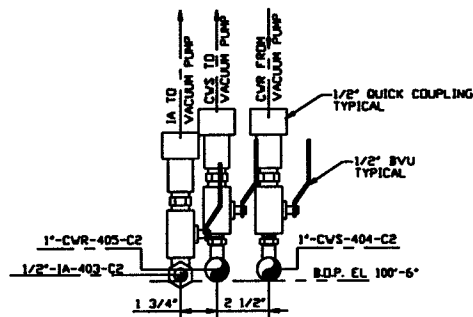
SECTION E
SCALE: 3/4"=1'-0" V049-5-030, SHT1



SECTION A
SCALE: 3/4"=1'-0" V049-5-030, SHT1



DETAIL 2
SCALE: FULL V049-5-030, SHT1



DETAIL 1
SCALE: 3"=1'-0" V049-5-030, SHT1

NOT FOR CONSTRUCTION

Raymond S. Watts, P.E.
5/7/96

LIGO D961188-00-V

<p>IT CONTAINS PROPRIETARY INFORMATION BELONGING TO PROCESS SYSTEMS INTERNATIONAL, INC. OR ITS COMPANIES AND SHALL BE USED ONLY FOR THE PURPOSES FOR WHICH IT WAS SUPPLIED. IT SHALL NOT BE COPIED, REPRODUCED OR OTHERWISE USED, IN WHOLE OR IN PART, WITHOUT THE WRITTEN CONSENT OF PROCESS SYSTEMS INTERNATIONAL, INC. AND SHALL BE RETURNED UPON REQUEST.</p>		<p>UNLESS OTHERWISE SPECIFIED DIMENSIONS ARE IN INCHES</p> <p>TOLERANCES: FRACTIONAL: ± ANGULAR: ±0.005 TWO PLACE DECIMAL: ± THREE PLACE DECIMAL: ± FINISHED SURFACE: ± BREAK CORNERS: R0.01 REMOVE ALL BARS</p>		<p>ISSUED FOR FOR</p> <p>GV 4/30/96 0153</p>		<p>PROCESS SYSTEMS INTERNATIONAL, INC. 20 WALRUP DR. WESTBOROUGH, MASSACHUSETTS 01581 USA</p>	
<p>110102 LIGO VACUUM EQUIPMENT END STATION</p>		<p>DO NOT SCALE THIS DRAWING</p>		<p>ISSUED FOR FOR</p> <p>GV 4/30/96 0153</p>		<p>PIPING ARRANGEMENT, SECTIONS LEFT END STATION WASHINGTON SITE LIGO VACUUM EQUIPMENT</p>	
<p>USED ON:</p>		<p>REV</p>		<p>DESCRIPTION</p>		<p>SCALE AS NOTED SHEET 1 OF 1</p>	
<p>REFERENCE DRAWINGS</p>		<p>NEXT ASS'Y:</p>		<p>CHKD DRWN DATE DEBR</p>		<p>SCALE AS NOTED SHEET 1 OF 1</p>	