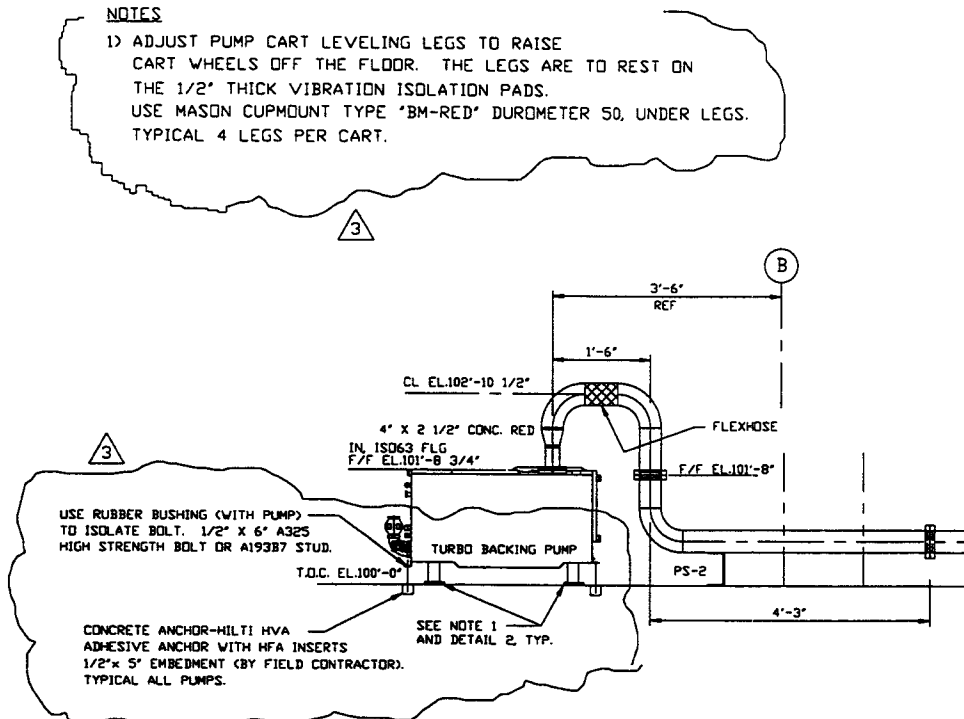
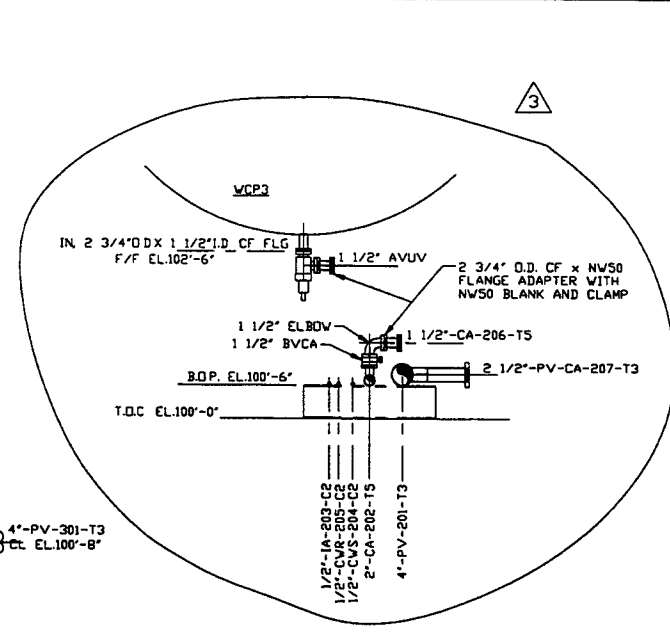


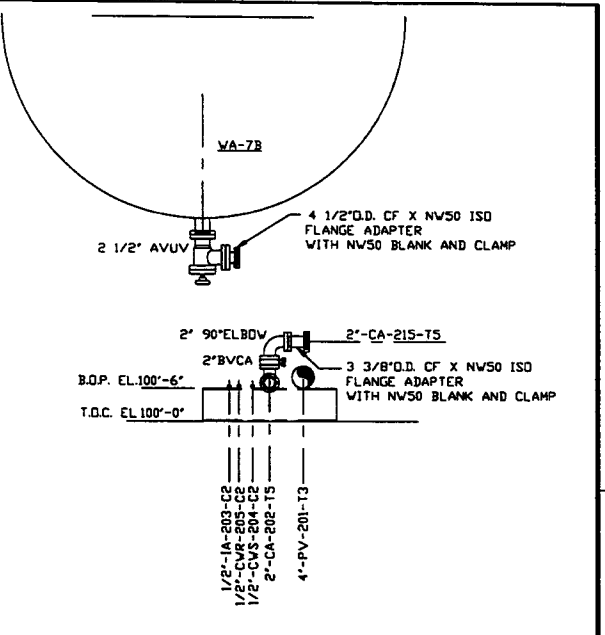
SECTION B
SCALE: 3/8"=1'-0"
V049-5-026 SHT.2



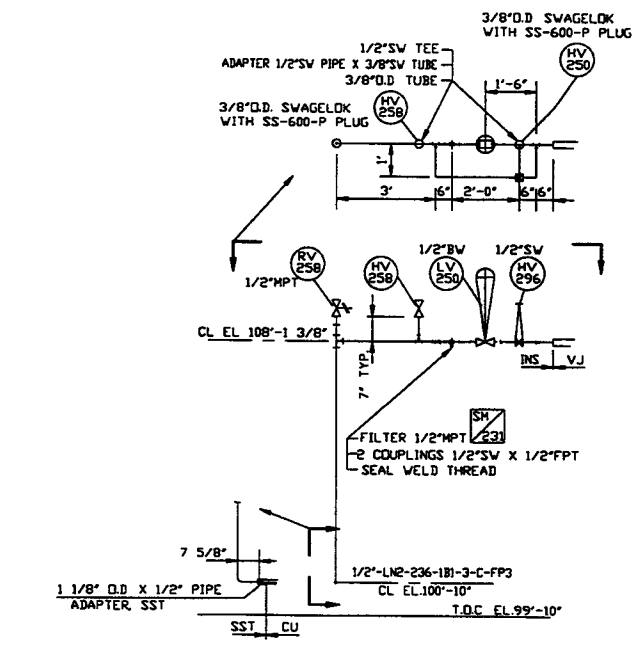
SECTION C
SCALE: 3/4"=1'-0"
V049-5-026 SHT.1



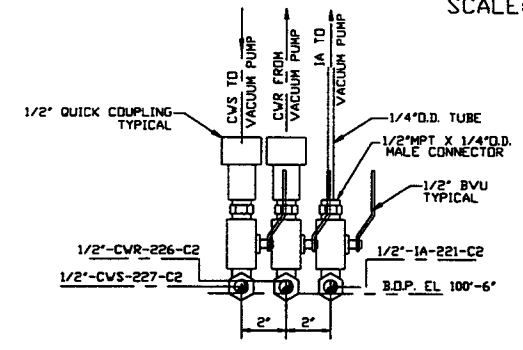
SECTION D
SCALE: 3/4"=1'-0"
V049-5-026 SHT.1



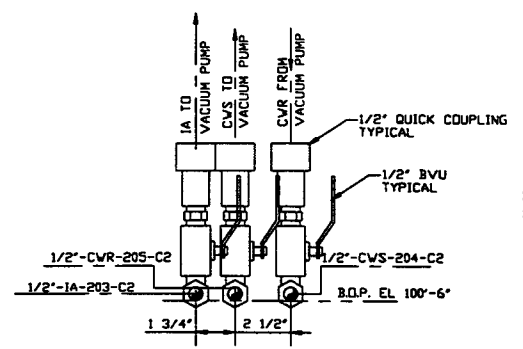
SECTION E
SCALE: 3/4"=1'-0"
V049-5-026 SHT.1



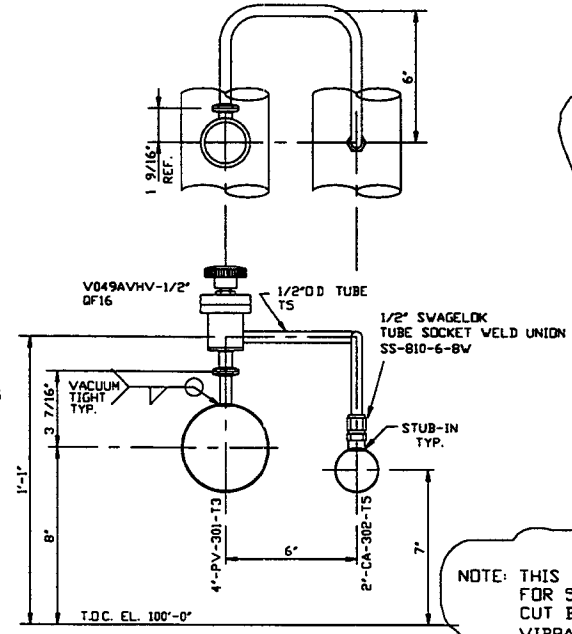
SECTION F
SCALE: 3/8"=1'-0"
V049-5-026 SHT.3



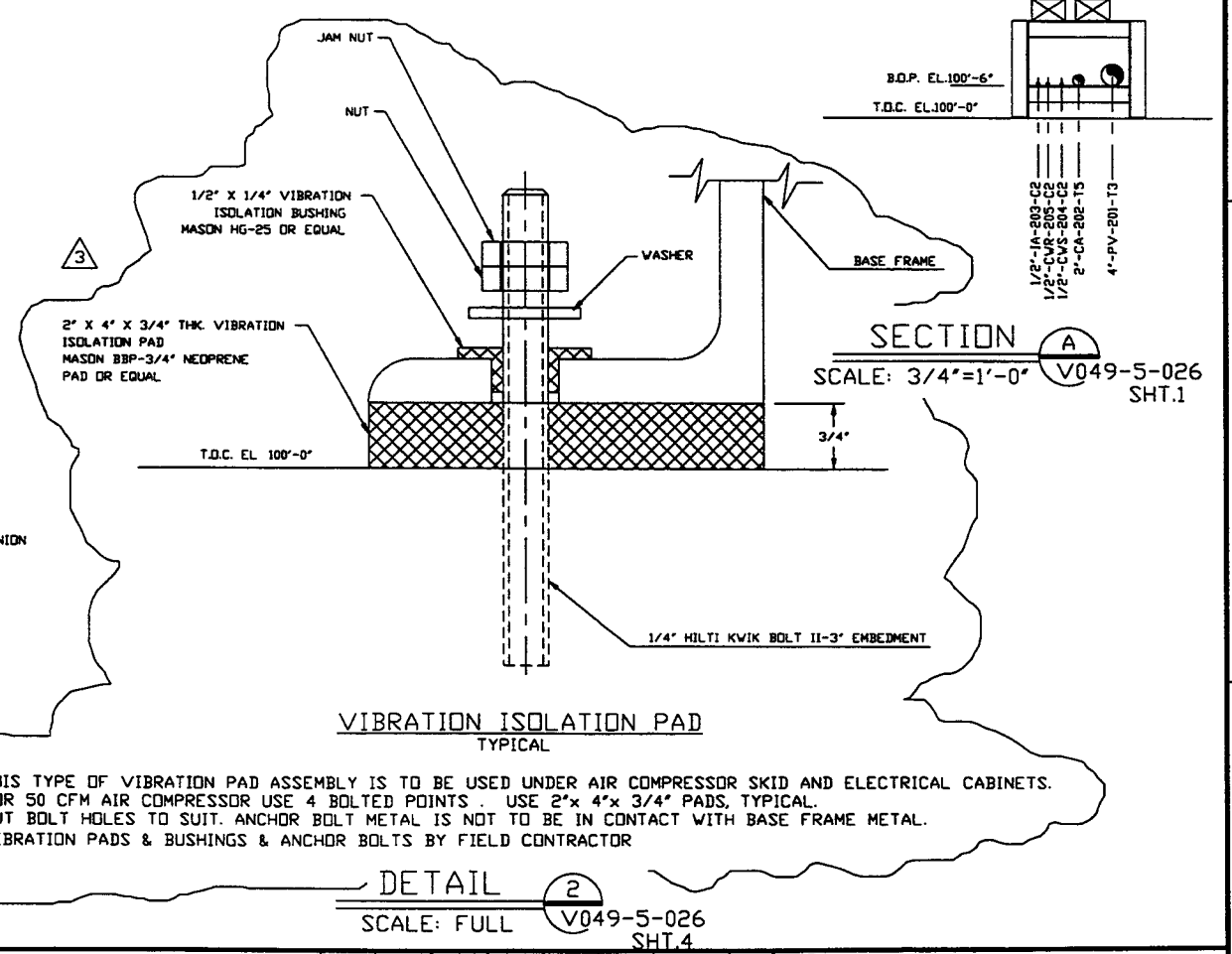
DETAIL 4
SCALE: 3"=1'-0"
V049-5-026 SHT.1



DETAIL 1
SCALE: 3"=1'-0"
V049-5-026 SHT.1



DETAIL 3
SCALE: 3"=1'-0"
V049-5-026 SHT.1



DETAIL 2
SCALE: FULL
V049-5-026 SHT.4

NOTES
1) ADJUST PUMP CART LEVELING LEGS TO RAISE CART WHEELS OFF THE FLOOR. THE LEGS ARE TO REST ON THE 1/2" THICK VIBRATION ISOLATION PADS. USE MASON CUPMOUNT TYPE 'BM-RED' DUROMETER 50, UNDER LEGS. TYPICAL 4 LEGS PER CART.

USE RUBBER BUSHING (WITH PUMP) TO ISOLATE BOLT. 1/2" X 6" A325 HIGH STRENGTH BOLT OR A193B7 STUD.
CONCRETE ANCHOR-HILTI HVA ADHESIVE ANCHOR WITH HFA INSERTS 1/2" X 5" EMBEDMENT (BY FIELD CONTRACTOR). TYPICAL ALL PUMPS.

NOTE: THIS TYPE OF VIBRATION PAD ASSEMBLY IS TO BE USED UNDER AIR COMPRESSOR SKID AND ELECTRICAL CABINETS. FOR 50 CFM AIR COMPRESSOR USE 4 BOLTED POINTS. USE 2" X 4" X 3/4" PADS, TYPICAL. CUT BOLT HOLES TO SUIT. ANCHOR BOLT METAL IS NOT TO BE IN CONTACT WITH BASE FRAME METAL. VIBRATION PADS & BUSHINGS & ANCHOR BOLTS BY FIELD CONTRACTOR

PROPRIETARY AND CONFIDENTIAL
THIS DOCUMENT CONTAINS PROPRIETARY INFORMATION BELONGING TO PROCESS SYSTEMS INTERNATIONAL, INC. OR ITS AFFILIATED COMPANIES AND SHALL BE USED ONLY FOR THE PURPOSE FOR WHICH IT WAS SUPPLIED. IT SHALL NOT BE COPIED, REPRODUCED OR OTHERWISE USED, NOR SHALL SUCH INFORMATION BE FURNISHED IN WHOLE OR IN PART TO OTHERS EXCEPT IN ACCORDANCE WITH THE TERMS OF ANY AGREEMENT UNDER WHICH IT WAS SUPPLIED OR WITH THE PRIOR WRITTEN CONSENT OF PROCESS SYSTEMS INTERNATIONAL, INC. AND SHALL BE RETURNED UPON REQUEST.

DWG. NO.	DESCRIPTION	DWG. NO.	DESCRIPTION
V049-0-011	P & ID LEFT MID STATION	V049-0-006	P & ID BOK CRYEPLMP
V049-5-006	EQUIPMENT ARRANGEMENT LEFT MID STATION	1101103	LIGO VACUUM EQUIPMENT MID STATION

UNLESS OTHERWISE SPECIFIED DIMENSIONS ARE IN INCHES
TOLERANCES:
FUNCTIONAL:
ANGULAR: 45°-30' BEND ±2°
TWO PLACE DECIMAL ±.01
THREE PLACE DECIMAL ±.005
FINISHED SURFACE FINISH:
BREAK CORNERS TO REMOVE ALL BURRS

REV	DESCRIPTION	CHKD	DRWN	DATE	DESN
3	REISSUED FOR CONSTRUCTION AS NOTED			06/06/97	0491
2	ISSUED FOR CONSTRUCTION			04/28/97	0440
1	ISSUED FOR FDR UPDATE & BID			12/23/96	0356
0	ISSUED FOR FDR			4/30/96	0153

PROCESS SYSTEMS INTERNATIONAL, INC.
20 WALKUP DR. WESTBOROUGH, MASSACHUSETTS 01581 USA

PIPING ARRGT - SECTIONS & DETAILS
LEFT MID STATION
WASHINGTON SITE
LIGO VACUUM EQUIPMENT

CAD FILE: V049502B
SIZE: D
DWG NO: V049-5-028
REV: 3

SCALE: AS NOTED
SHEET: 1 OF 1