

ELEVATION

PROPRIETARY AND CONFIDENTIAL
 THIS DOCUMENT CONTAINS PROPRIETARY INFORMATION BELONGING TO PROCESS SYSTEMS INTERNATIONAL, INC. OR ITS AFFILIATED COMPANIES AND SHALL BE USED ONLY FOR THE PURPOSE FOR WHICH IT WAS SUPPLIED. IT SHALL NOT BE COPIED, REPRODUCED OR OTHERWISE USED, NOR SHALL SUCH INFORMATION BE FURNISHED IN WHOLE OR IN PART TO OTHERS EXCEPT IN ACCORDANCE WITH THE TERMS OF ANY AGREEMENT UNDER WHICH IT WAS SUPPLIED OR WITH THE PRIOR WRITTEN CONSENT OF PROCESS SYSTEMS INTERNATIONAL, INC. AND SHALL BE RETURNED UPON REQUEST.

DWG NO	DESCRIPTION	REFERENCE DRAWINGS	DESCRIPTION
V049-0-011	P & ID LEFT MID STATION		
V049-0-006	P & ID 80K CRYOPUMP		
V049-5-026	PIPING ARRANGEMENT PLAN LEFT MID STATION		
V049-5-006	EQUIPMENT ARRANGEMENT LEFT MID STATION		
1101103	LIGO VACUUM EQUIPMENT MID STATION		

UNLESS OTHERWISE SPECIFIED
 DIMENSIONS ARE IN INCHES
 TOLERANCES
 FRACTIONAL ±
 ANGULAR ARCH 10°-30° BEND 12°
 TWO PLATE BECHAL ± 0.1
 THREE PLATE BECHAL ± 0.05
 FINISHED SURFACE RMS
 BREAK CORNERS IN
 REMOVE ALL BURRS

DO NOT SCALE THIS DRAWING

USED ON

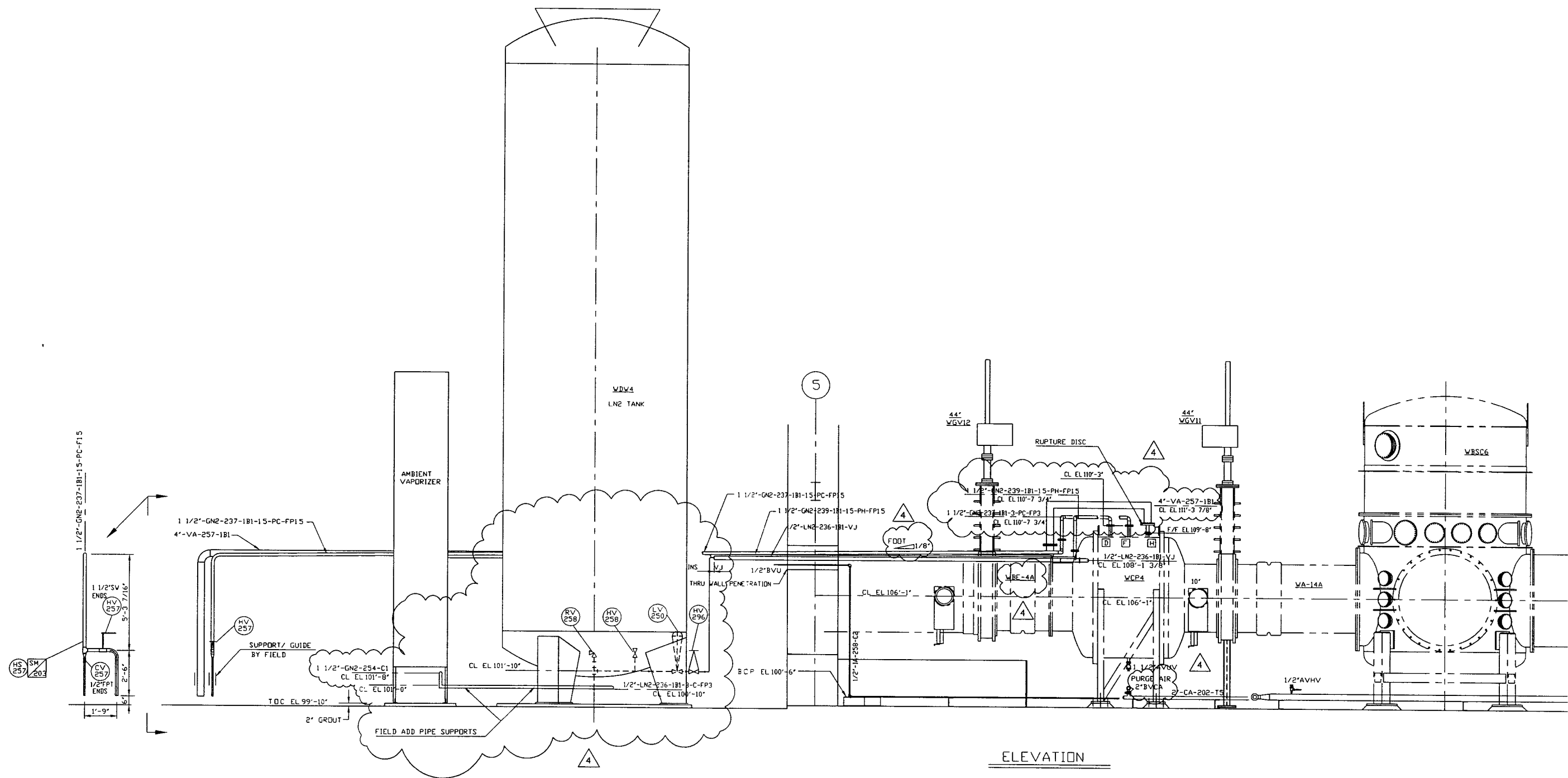
NEXT ASS'Y

REV	DESCRIPTION	CHKD	DR	DATE	DESN
4	AS-BUILT				
3	REISSUED FOR CONSTRUCTION AS NOTED				
2	ISSUED FOR CONSTRUCTION				
1	ISSUED FOR FDR UPDATE & BID				
0	ISSUED FOR FDR				

PROCESS SYSTEMS INTERNATIONAL INC.
 20 WALKUP DR WESTBOROUGH, MASSACHUSETTS 01581 USA


PIPING ARRGT - ELEVATION (RIGHT)
 LEFT MID STATION
 WASHINGTON SITE
 LIGO VACUUM EQUIPMENT

CAD FILE: V0495027/5027S1
 SIZE: D
 DWG NO: V049-5-027
 SCALE: 3/8"=1'-0"
 SHEET: 1 OF 2



ELEVATION

SEE SHEET 1 FOR REVISIONS

 PROCESS SYSTEMS INTERNATIONAL, INC. 20 WALKUP DR. WESTBOROUGH, MASSACHUSETTS 01581 USA			
PIPING ARRGT - ELEVATION (LEFT) LEFT MID STATION WASHINGTON SITE LIQD VACUUM EQUIPMENT			
CAD FILE	SIZE	DWG NO	REV
V0495027/S027S2	D	V049-5-027	4
SCALE	SHEET		2 OF 2
3/8"=1'-0"			

MAY 26, 1998 13:05:58