

ELEVATION

PROPRIETARY AND CONFIDENTIAL
 THIS DOCUMENT CONTAINS PROPRIETARY INFORMATION BELONGING TO PROCESS SYSTEMS INTERNATIONAL, INC. OR ITS AFFILIATED COMPANIES AND SHALL BE USED ONLY FOR THE PURPOSE FOR WHICH IT WAS SUPPLIED. IT SHALL NOT BE COPIED, REPRODUCED OR OTHERWISE USED, NOR SHALL SUCH INFORMATION BE FURNISHED IN WHOLE OR IN PART TO OTHERS WITHOUT THE WRITTEN CONSENT OF PROCESS SYSTEMS INTERNATIONAL, INC. AND SHALL BE RETURNED UPON REQUEST.

NO.	DATE	BY	DESCRIPTION
3	06.06.97	SPIDER	REISSUED FOR CONSTRUCTION AS NOTED
2	04.28.97	RH	ISSUED FOR CONSTRUCTION
1	12/23/96	REC	ISSUED FOR FOR UPDATE & BID
0	4/30/96	GV	ISSUED FOR FOR

NO.	DATE	BY	DESCRIPTION
3	06.06.97	SPIDER	REISSUED FOR CONSTRUCTION AS NOTED
2	04.28.97	RH	ISSUED FOR CONSTRUCTION
1	12/23/96	REC	ISSUED FOR FOR UPDATE & BID
0	4/30/96	GV	ISSUED FOR FOR

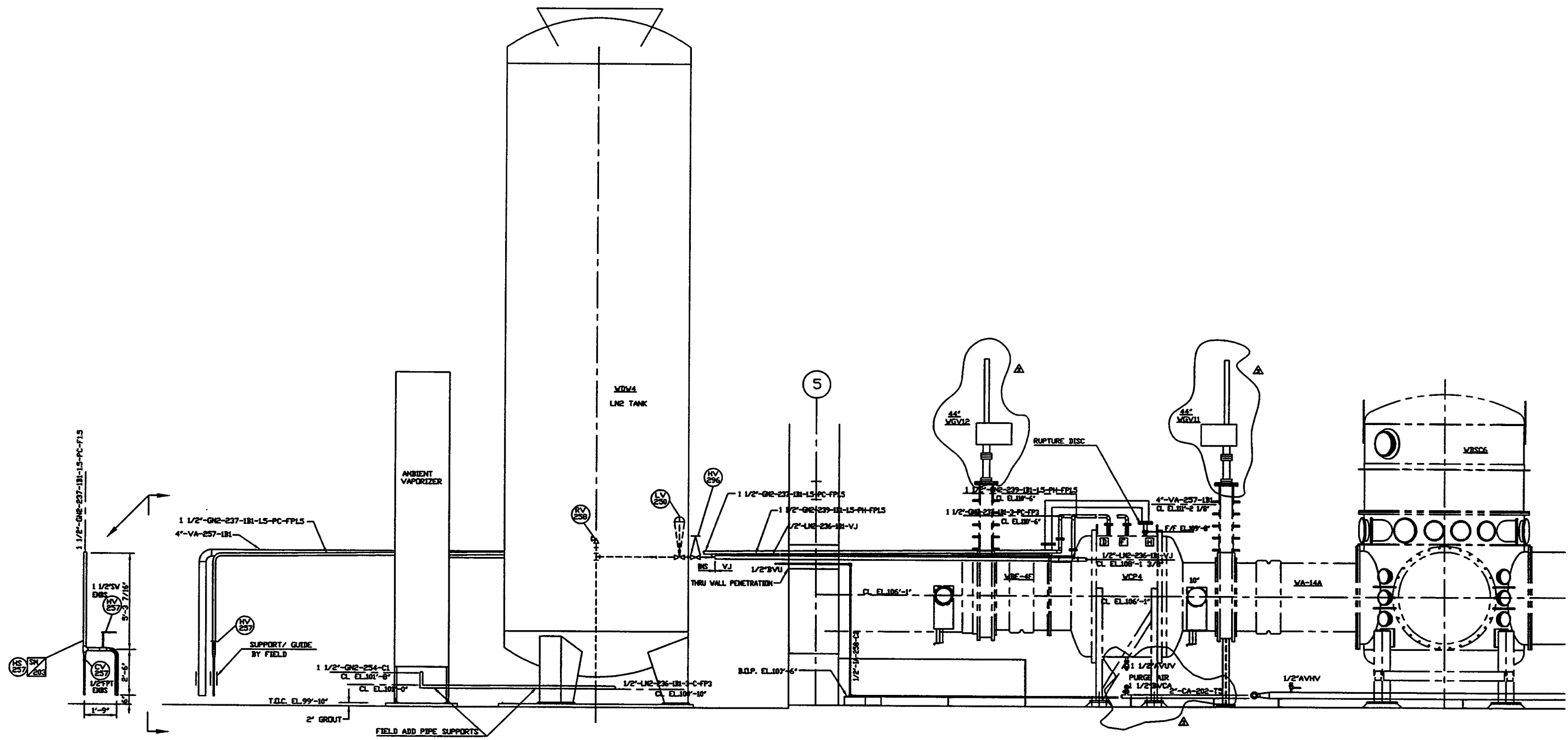
UNLESS OTHERWISE SPECIFIED DIMENSIONS ARE IN INCHES
 UNLESS OTHERWISE SPECIFIED FINISHES ARE AS SHOWN
 UNLESS OTHERWISE SPECIFIED MATERIALS ARE AS SHOWN
 UNLESS OTHERWISE SPECIFIED TOLERANCES ARE AS SHOWN
 UNLESS OTHERWISE SPECIFIED ALL DIMENSIONS ARE TO FACE UNLESS NOTED OTHERWISE
 UNLESS OTHERWISE SPECIFIED ALL DIMENSIONS ARE TO FACE UNLESS NOTED OTHERWISE
 UNLESS OTHERWISE SPECIFIED ALL DIMENSIONS ARE TO FACE UNLESS NOTED OTHERWISE

NO.	DATE	BY	DESCRIPTION
3	06.06.97	SPIDER	REISSUED FOR CONSTRUCTION AS NOTED
2	04.28.97	RH	ISSUED FOR CONSTRUCTION
1	12/23/96	REC	ISSUED FOR FOR UPDATE & BID
0	4/30/96	GV	ISSUED FOR FOR

PROCESS SYSTEMS INTERNATIONAL, INC.
 20 WILKUP DR. WESTBOROUGH, MASSACHUSETTS 01581 USA


PIPING ARRGT - ELEVATION (RIGHT) LEFT MID STATION WASHINGTON SITE LIGO VACUUM EQUIPMENT

SCALE: 3/8"=1'-0" SHEET: 1 OF 2



ELEVATION

SEE SHEET 1 FOR REVISIONS

 PROCESS SYSTEMS INTERNATIONAL INC. 20 WALRUP DR. WESTBOROUGH, MASSACHUSETTS 01581 USA			
PIPING ARRGT - ELEVATION (LEFT) LEFT MID STATION WASHINGTON SITE LIGD VACUUM EQUIPMENT			
CHG FILE V0495027/5027S2	SIZE D	DWG. NO. V049-5-027	REV. 2
SCALE 3/8"=1'-0"	SHEET 2 OF 2		

8 7 6 5 4 3 2 1

JUN 13, 1997 - 188709