

ELEVATION

**NOT FOR  
CONSTRUCTION**

*Raymond P. Crato, P.E.*

T/7/96 LIGO D96184-00-V

SECRETARY AND CONFIDENTIAL  
DRAWING CONTAINS PROPRIETARY  
INFORMATION BELONGING TO PROCESS  
SYSTEMS INTERNATIONAL, INC. OR ITS  
AFFILIATED COMPANIES AND SHALL BE  
USED ONLY FOR THE PURPOSE FOR  
WHICH IT WAS SUPPLIED. IT SHALL NOT  
BE COPIED, REPRODUCED OR OTHERWISE  
USED FOR ANY OTHER PURPOSE WITHOUT  
THE WRITTEN CONSENT OF PROCESS SYSTEMS  
INTERNATIONAL, INC. AND SHALL BE  
RETURNED UPON REQUEST.

UNLESS OTHERWISE SPECIFIED  
DIMENSIONS ARE IN INCHES  
TOLERANCES:  
FRACTIONS: ± .005  
DECIMALS: ± .001  
THREE PLACE DECIMALS: ± .0005  
FINISHED SURFACE DIMS:  
REMOVE ALL DIMS

DO NOT SCALE THIS DRAWING	0	ISSUED FOR FDR	4/30/96	0153
USED ON:	REV	DESCRIPTION	CHKD	DRWN
NEXT ASS'Y:		ISSUE DESCRIPTION	DATE	DESN

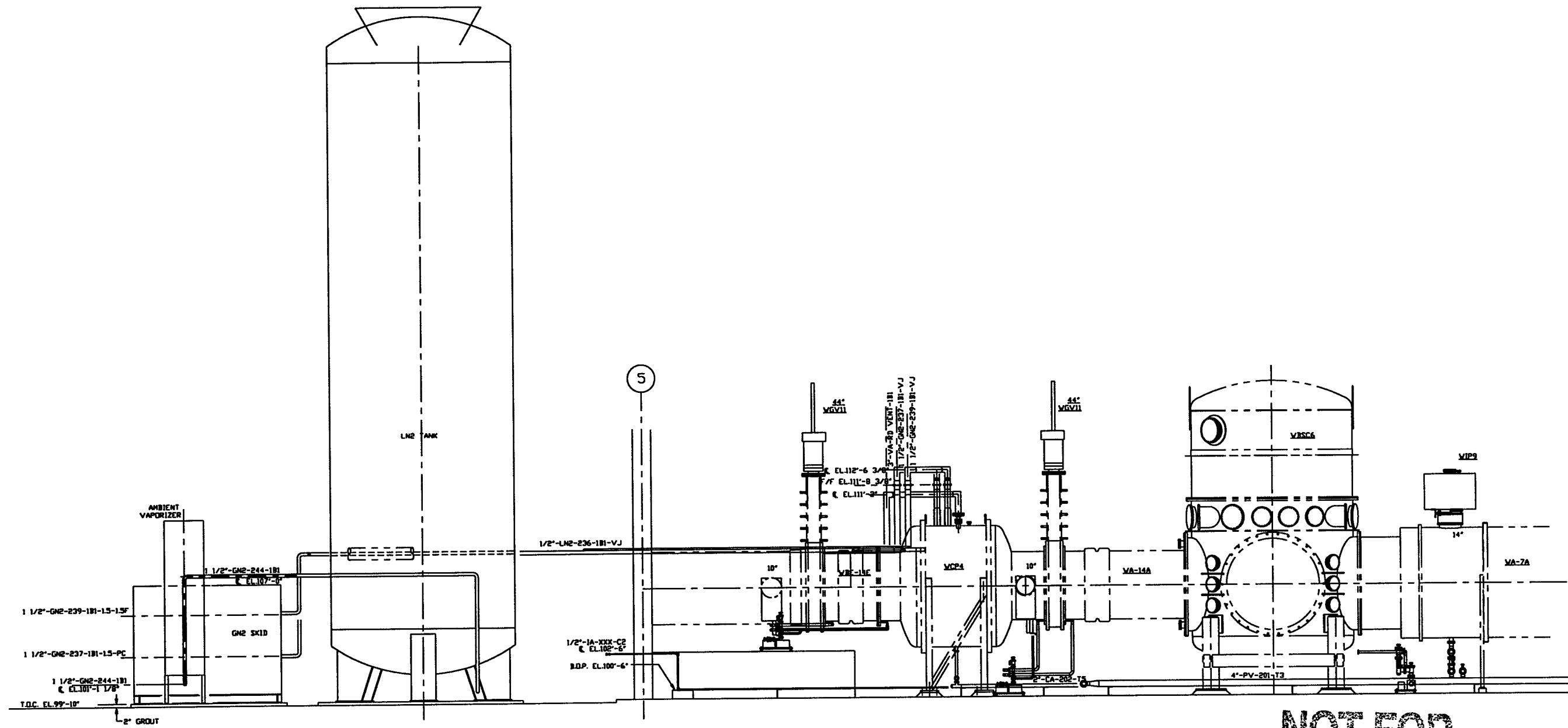
**PROCESS SYSTEMS INTERNATIONAL, INC.**  
20 WALRUP DR. WESTBOROUGH, MASSACHUSETTS 01581 USA

PIPING ARRGT - ELEVATION (RIGHT)  
LEFT MID STATION  
WASHINGTON SITE  
LIGO VACUUM EQUIPMENT

CAD FILE: V0495027/5027S1  
SIZE: D  
ENG. NO.: V049-5-027  
SCALE: 3/8"=1'-0"  
SHEET: 1 OF 2

DWG. NO.	DESCRIPTION	DWG. NO.	DESCRIPTION
7	REFERENCE DRAWINGS	6	
5		4	
3		2	
1			

INC 07 1994 - 110687



ELEVATION

**NOT FOR  
CONSTRUCTION**

*Raymond D. Ciatta, P.E.*  
5/7/96 LIGOD961184-00-V  
SEE SHEET 1 FOR REVISIONS

<b>PROCESS SYSTEMS INTERNATIONAL INC.</b> <small>20 WILMUP DR. WESTBOROUGH, MASSACHUSETTS 01581 USA</small>			
<b>PIPING ARRGT - ELEVATION (LEFT)</b> <b>LEFT MID STATION</b> <b>WASHINGTON SITE</b> <b>LIGD VACUUM EQUIPMENT</b>			
<small>DRG FILE</small> V0495027/502752	<small>SIZE</small> D	<small>DRG. NO.</small> V049-5-027	<small>REV.</small> 0
<small>SCALE</small> 3/8"=1'-0"	<small>SHEET</small> 2 OF 2		

INC 07, 1994 - 110834