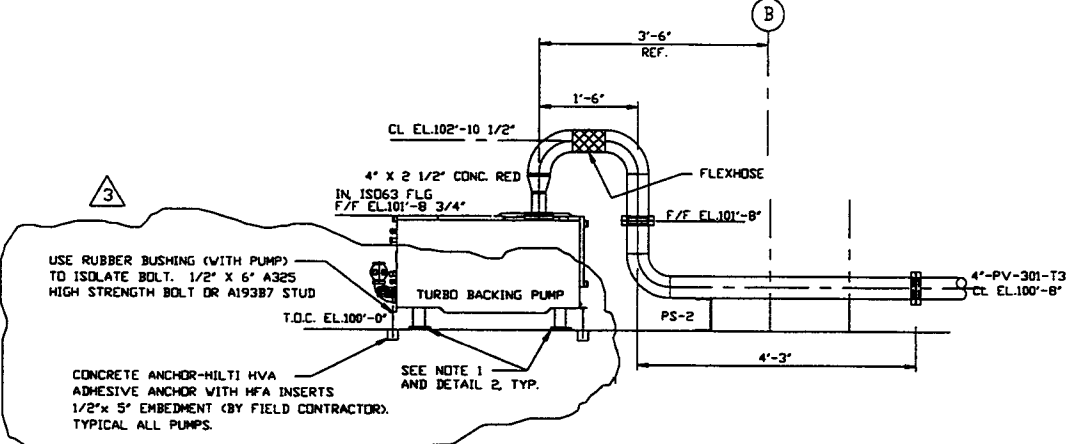
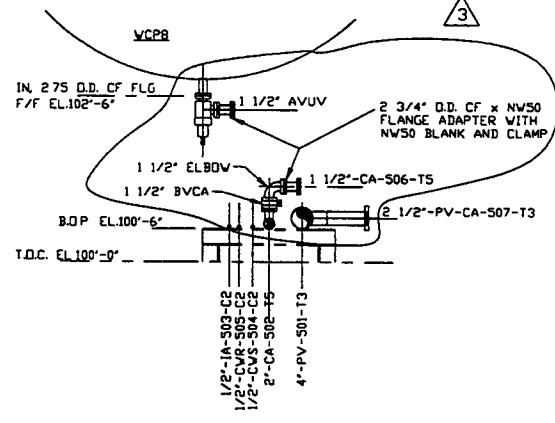


SECTION B  
SCALE: 3/8"=1'-0" V049-5-021, SHT2

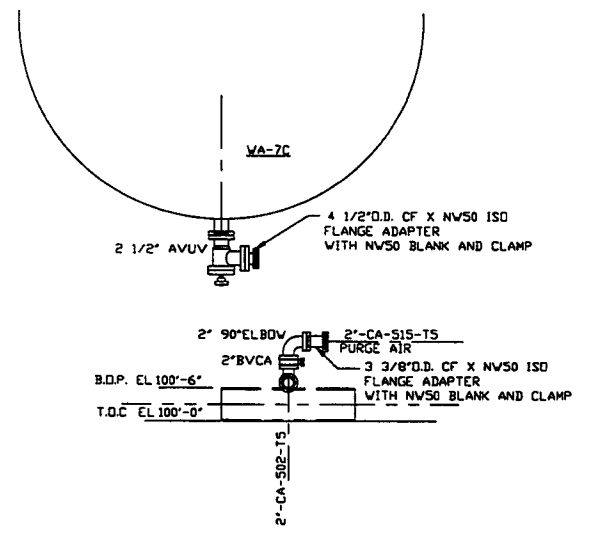
**NOTES**  
 1) ADJUST PUMP CART LEVELING LEGS TO RAISE CART WHEELS OFF THE FLOOR. THE LEGS ARE TO REST ON THE 1/2" THICK VIBRATION ISOLATION PADS. USE MASON CUPMOUNT TYPE "BM-RED" DUROMETER 50, UNDER LEGS. TYPICAL 4 LEGS PER CART.



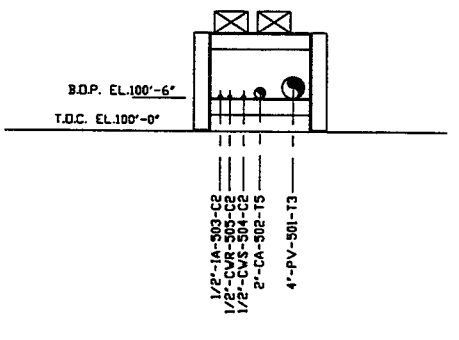
SECTION C  
SCALE: 3/4"=1'-0" V049-5-021, SHT1



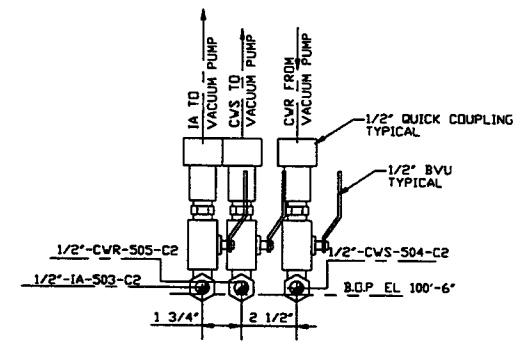
SECTION D  
SCALE: 3/4"=1'-0" V049-5-021, SHT1



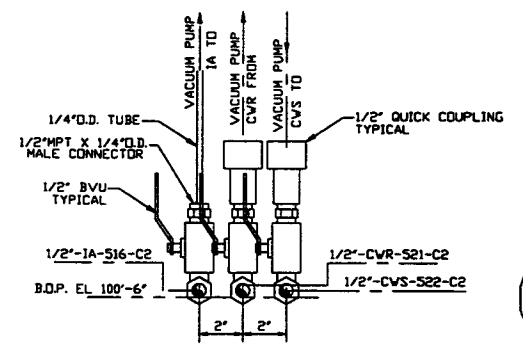
SECTION E  
SCALE: 3/4"=1'-0" V049-5-021, SHT1



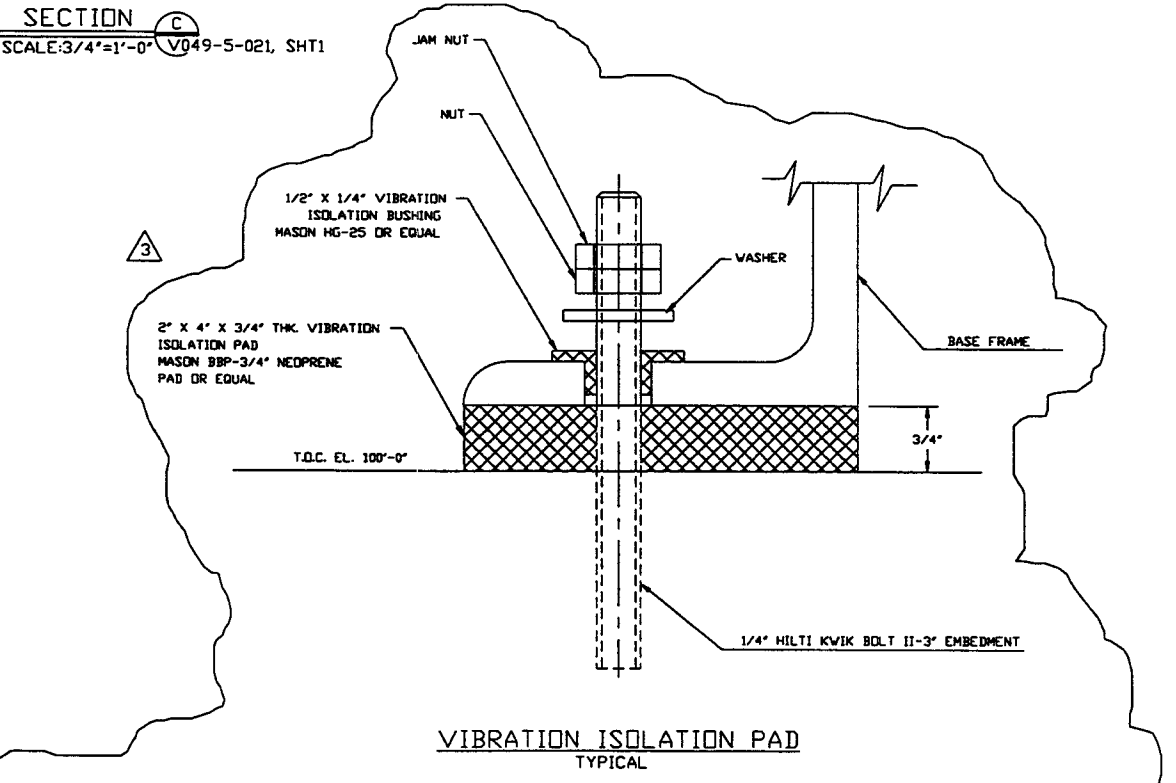
SECTION A  
SCALE: 3/4"=1'-0" V049-5-021, SHT1



DETAIL 1  
SCALE: 3"=1'-0" V049-5-021, SHT1

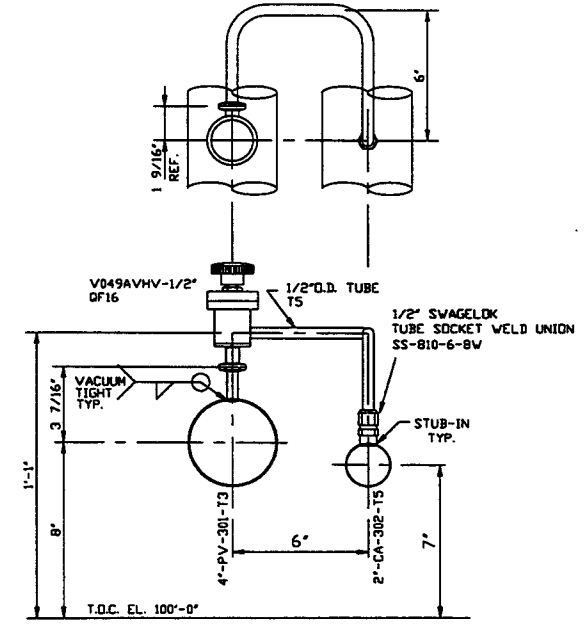


DETAIL 4  
SCALE: 3"=1'-0" V049-5-021, SHT1



NOTE: THIS TYPE OF VIBRATION PAD ASSEMBLY IS TO BE USED UNDER AIR COMPRESSOR SKID AND ELECTRICAL CABINETS. FOR 50 CFM AIR COMPRESSOR USE 4 BOLTED POINTS. USE 2" x 4" x 3/4" PADS, TYPICAL. CUT BOLT HOLES TO SUIT. ANCHOR BOLT METAL IS NOT TO BE IN CONTACT WITH BASE FRAME METAL. VIBRATION PADS & BUSHINGS & ANCHOR BOLTS BY FIELD CONTRACTOR.

DETAIL 2  
SCALE: FULL V049-5-021, SHT1



DETAIL 3  
SCALE: 3"=1'-0" V049-5-021, SHT1

PROPRIETARY AND CONFIDENTIAL			
THIS DOCUMENT CONTAINS PROPRIETARY INFORMATION BELONGING TO PROCESS SYSTEMS INTERNATIONAL, INC. OR ITS AFFILIATED COMPANIES AND SHALL BE USED ONLY FOR THE PURPOSE FOR WHICH IT WAS SUPPLIED. IT SHALL NOT BE COPIED, REPRODUCED OR OTHERWISE USED FOR ANY OTHER PURPOSE WITHOUT THE WRITTEN CONSENT OF PROCESS SYSTEMS INTERNATIONAL, INC. AND SHALL BE RETURNED UPON REQUEST.			
DWG. NO.	DESCRIPTION	DWG. NO.	DESCRIPTION
		V049-5-021	PIPING ARRANGEMENT PLAN RIGHT END STATION
		V049-5-005	EQUIPMENT ARRANGEMENT RIGHT END STATION
		1101102	LIGO VACUUM EQUIPMENT END STATION
REFERENCE DRAWINGS			

UNLESS OTHERWISE SPECIFIED		ISSUE DESCRIPTION	
DIMENSIONS ARE IN INCHES			
TOLERANCES:		REV	DESCRIPTION
FRACTIONAL: ±		3	REISSUED FOR CONSTRUCTION AS NOTED
DECIMAL: ±		2	ISSUED FOR CONSTRUCTION
FINISHED SURFACE: ±		1	ISSUED FOR FOR UPDATE & BID
REMOVE ALL BURRS		0	ISSUED FOR FOR
DO NOT SCALE THIS DRAWING		P1	PRELIMINARY DESIGN
USED ON:			
NEXT ASS'Y:			

DATE	BY	CHKD	DRVN	DATE	DESN
06/06/97	PV	DMV	RDC	04/30/96	GV
04/28/97	0440				
12/23/96	0356				

PROCESS SYSTEMS INTERNATIONAL, INC.		LIGO-VACUUM-EQUIPMENT	
20 WALKUP DR. WESTBOROUGH, MASSACHUSETTS 01581 USA			
PIPING ARRANGEMENT, SECTIONS RIGHT END STATION WASHINGTON SITE LIGO VACUUM EQUIPMENT			
CAD FILE	SHEET	DWG. NO.	REV.
V0495023	D	V049-5-023	3
SCALE AS NOTED		SHEET	1 OF 1