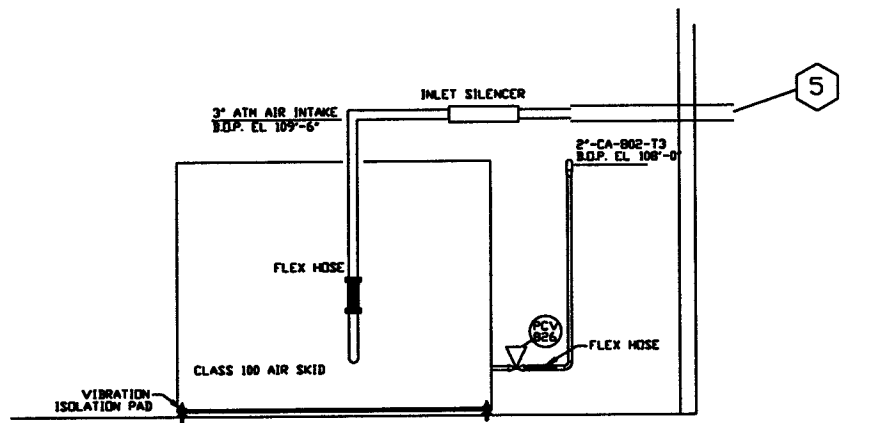
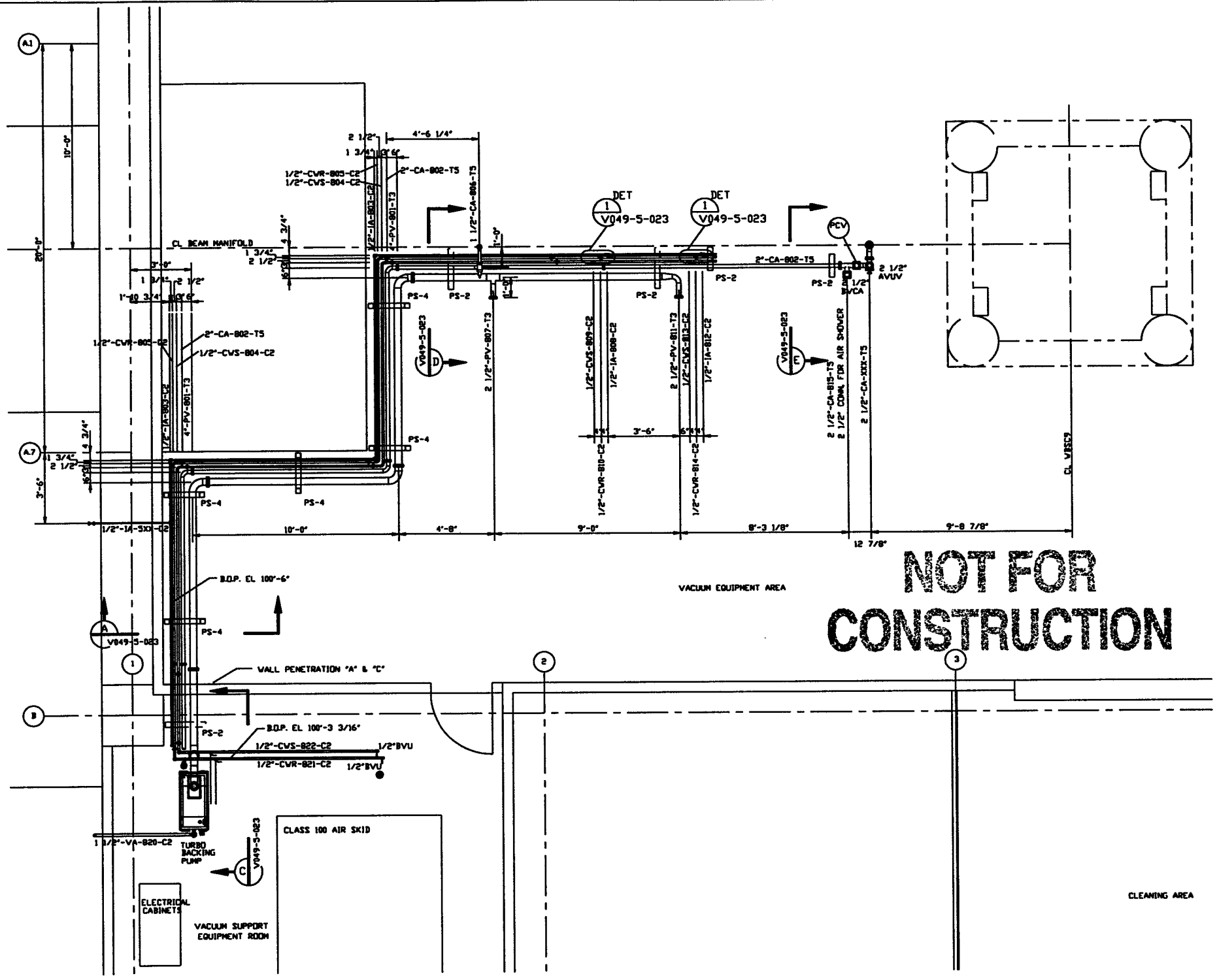


PLAN @ EL 110'-0"



ELEVATION B-B



PLAN @ FLOOR

NOT FOR CONSTRUCTION

Raymond S. Cioth, PE
5/7/96 LIGOD961180-01-V

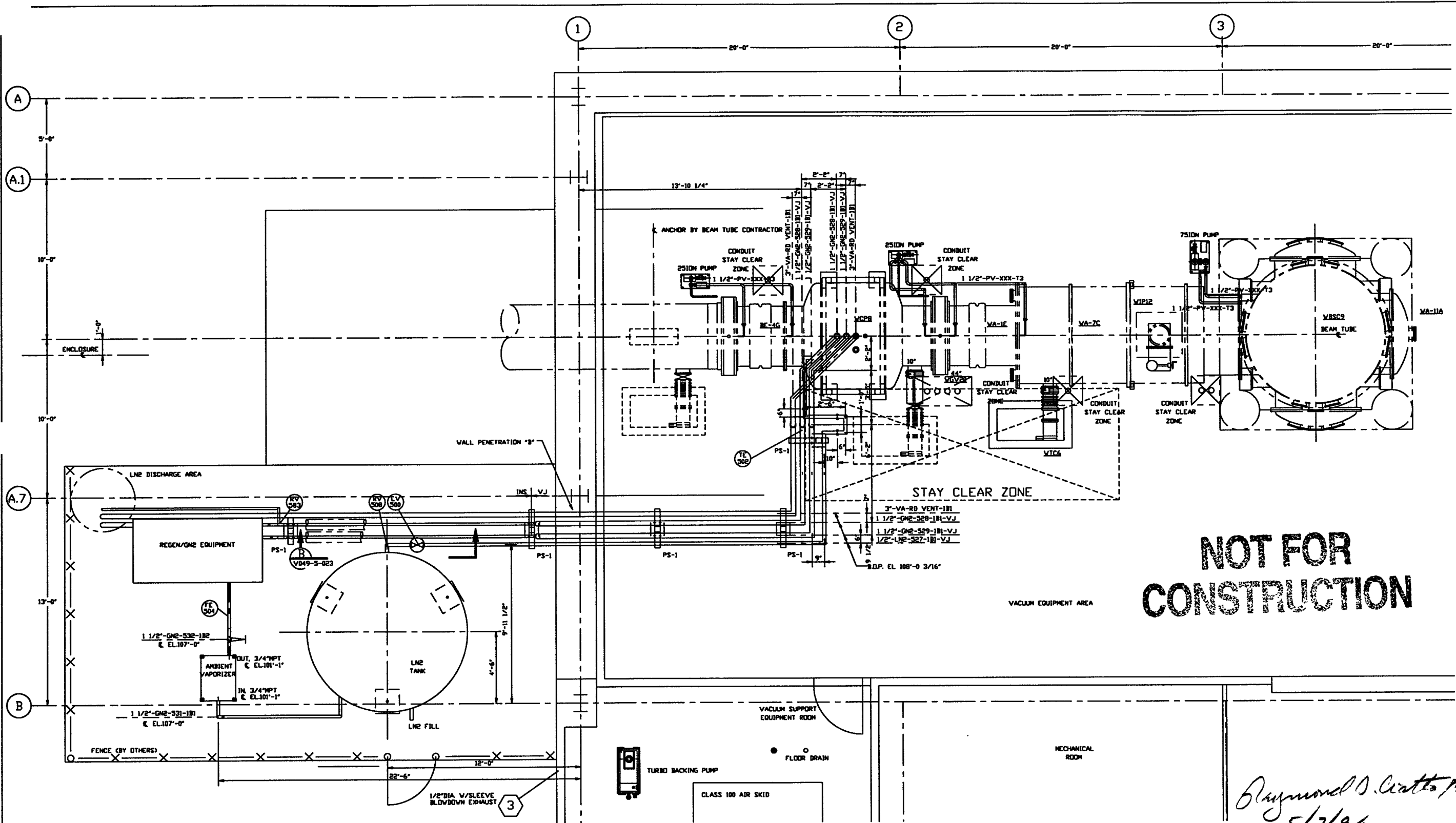
SECRET AND CONFIDENTIAL
CLIENT CONTAINS PROPRIETARY
TECHNOLOGY BELONGING TO PROCESS
SYSTEMS INTERNATIONAL, INC. OR ITS
AFFILIATED COMPANIES AND SHALL BE
USED ONLY FOR THE PURPOSES FOR
WHICH IT WAS SUPPLIED. IT SHALL NOT
BE COPIED, REPRODUCED OR OTHERWISE
DISSEMINATED WITHOUT THE WRITTEN
CONSENT OF PROCESS SYSTEMS
INTERNATIONAL, INC. AND SHALL BE
RETURNED UPON REQUEST.

DWG. NO.	DESCRIPTION	REFERENCE DRAWINGS	DWG. NO.	DESCRIPTION
1101102	LIGO VACUUM EQUIPMENT END STATION			

REV	DESCRIPTION	ISSUE DESCRIPTION
0	ISSUED FOR FBR	
P1	PRELIMINARY DESIGN	

PROCESS SYSTEMS INTERNATIONAL, INC. 30 BALDWIN DR. WESTBOROUGH, MASSACHUSETTS 01581 USA			
PIPING ARRANGEMENT, PLAN RIGHT END STATION WASHINGTON SITE LIGO VACUUM EQUIPMENT			
DWG. NO.	V0495021/5021S1	REV. NO.	0
DATE	4/30/96	SCALE	3/8"=1'-0"
DRAWN	GV	CHECKED	RM
DATE		DATE	
BY		DATE	
SHEET 1 OF 2			

4/30/96 - 054749



**NOT FOR
CONSTRUCTION**

Raymond S. Cratto
5/7/96

PLAN @ EL. 112'-6"

PROCESS SYSTEMS INTERNATIONAL INC. <small>30 WILKUP DR. WESTBOROUGH, MASSACHUSETTS 01581 USA</small>			
PIPING ARRANGEMENT, PLAN RIGHT END STATION WASHINGTON SITE LIGD VACUUM EQUIPMENT			
CAD FILE	SIZE	DWG. NO.	REV.
V0495021/5021S2	D	V049-5-021	0
SCALE 3/8\"/>			
SHEET 2 OF 2			

LIGD D461180-00-V