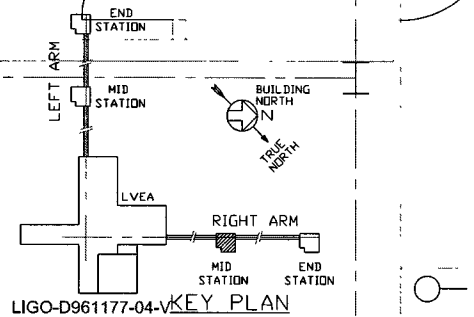


ELECTRONIC COPY

- NOTES:**
- 1 SEE SPEC. V049-2-021 FOR INSTALLATION/ COMMISSIONING INFORMATION.
 - 2 FOR TUBING/ PIPE SUPPORT REQUIREMENTS, SEE SPEC. V049-2-021, SECTION 10
 - 3 FOR GATE VALVE ANNULUS TUBIN INSTALLATION SEE DWG. V049-5-004



PROPRIETARY AND CONFIDENTIAL			
THIS DOCUMENT CONTAINS PROPRIETARY INFORMATION BELONGING TO PROCESS SYSTEMS INTERNATIONAL, INC. OR ITS AFFILIATED COMPANIES AND SHALL BE USED ONLY FOR THE PURPOSES FOR WHICH IT WAS SUPPLIED. IT SHALL NOT BE COPIED, REPRODUCED OR OTHERWISE USED, NOR SHALL SUCH INFORMATION BE FURNISHED IN WHOLE OR IN PART TO OTHERS EXCEPT IN ACCORDANCE WITH THE TERMS OF ANY AGREEMENT UNDER WHICH IT WAS SUPPLIED OR WITH THE PRIOR WRITTEN CONSENT OF PROCESS SYSTEMS INTERNATIONAL, INC. AND SHALL BE RETURNED UPON REQUEST.			
DWG NO	DESCRIPTION	DWG NO	DESCRIPTION
V049-0-016	P & ID RIGHT MID STATION		
V049-0-006	P & ID BOX CRYOPUMP		
V049-5-004	EQUIPMENT ARRANGEMENT RIGHT MID STATION		
1101103	LIGO VACUUM EQUIPMENT MID STATION		

UNLESS OTHERWISE SPECIFIED	
DIMENSIONS ARE IN INCHES	
TOLERANCES:	
FRACTIONAL: ± .01	
ANGULAR: ± .5°	
THREE PLACE DECIMAL: ± .005	
FINISHED SURFACE: RNS	
BREAK CORNERS: IN	
REMOVE ALL BURRS	
DO NOT SCALE THIS DRAWING	
USED ON	
NEXT ASS'Y.	
4	AS-BUILT
3	REISSUED FOR CONSTRUCTION AS NOTED
2	ISSUED FOR CONSTRUCTION
1	ISSUED FOR FDR UPDATE & BID
0	ISSUED FOR FDR

PROCESS SYSTEMS INTERNATIONAL, INC.
20 WALKUP DR. WESTBOROUGH, MASSACHUSETTS 01581 USA

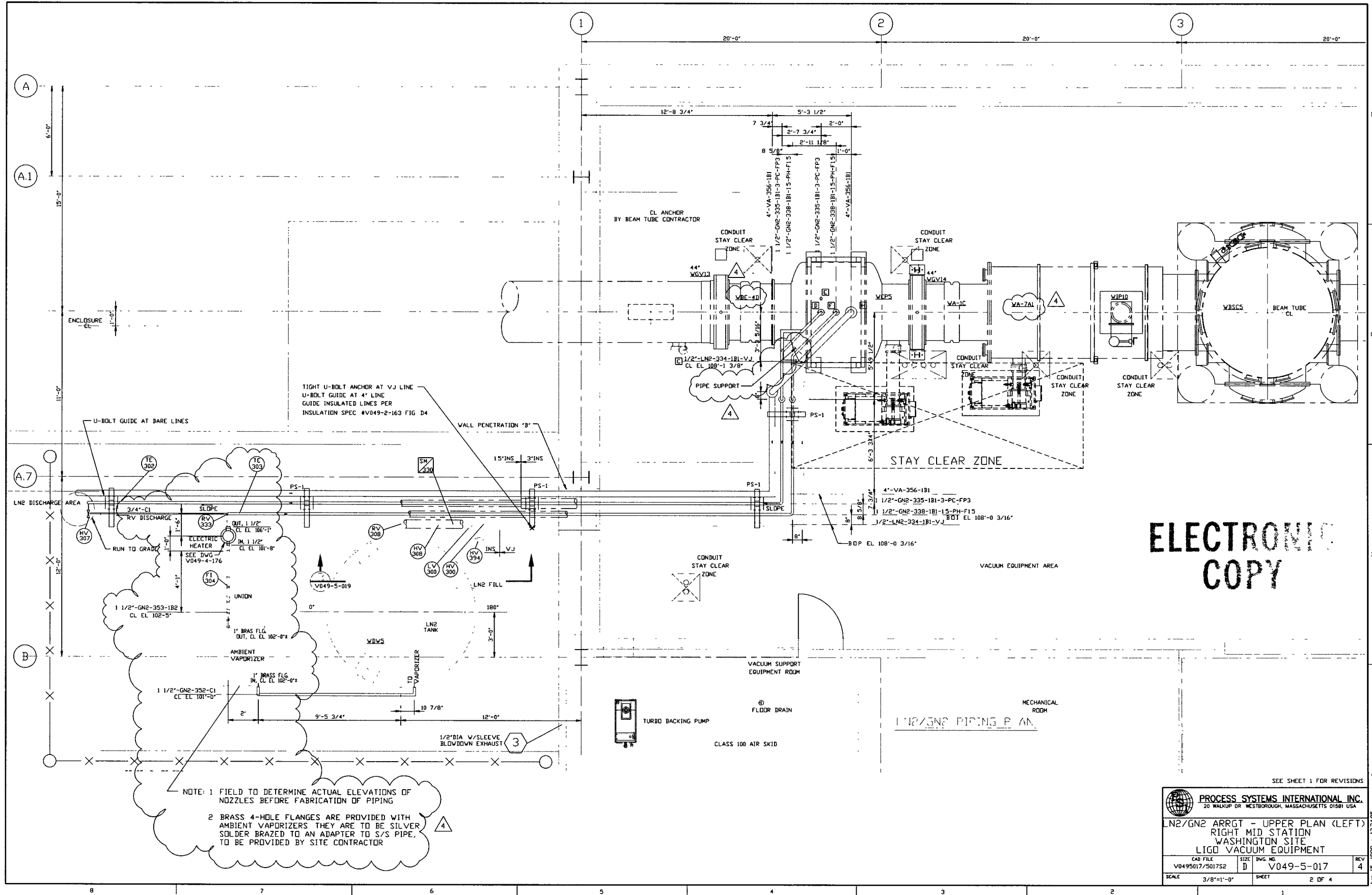
VAC/UTIL PIPE ARRGT - LOWER PLAN
RIGHT MID STATION
WASHINGTON SITE
LIGO VACUUM EQUIPMENT

CAD FILE: V0495017/5017S1
SCALE: 3/8"=1'-0"
SHEET: 1 OF 4

REV 4
DATE: 4/30/96
BY: DMW
CHKD: RDC
DATE: 12/23/96
BY: RDC
DATE: 04/28/97
BY: RM
DATE: 06/06/97
BY: PV
DATE: 6/26/98
BY: GW
DATE: 06/22

EDUCATION VERSION - NOT FOR COMMERCIAL USE

JUN 15, 1998 10:56:04



ELECTRONIC COPY

NOTE: 1 FIELD TO DETERMINE ACTUAL ELEVATIONS OF NOZZLES BEFORE FABRICATION OF PIPING

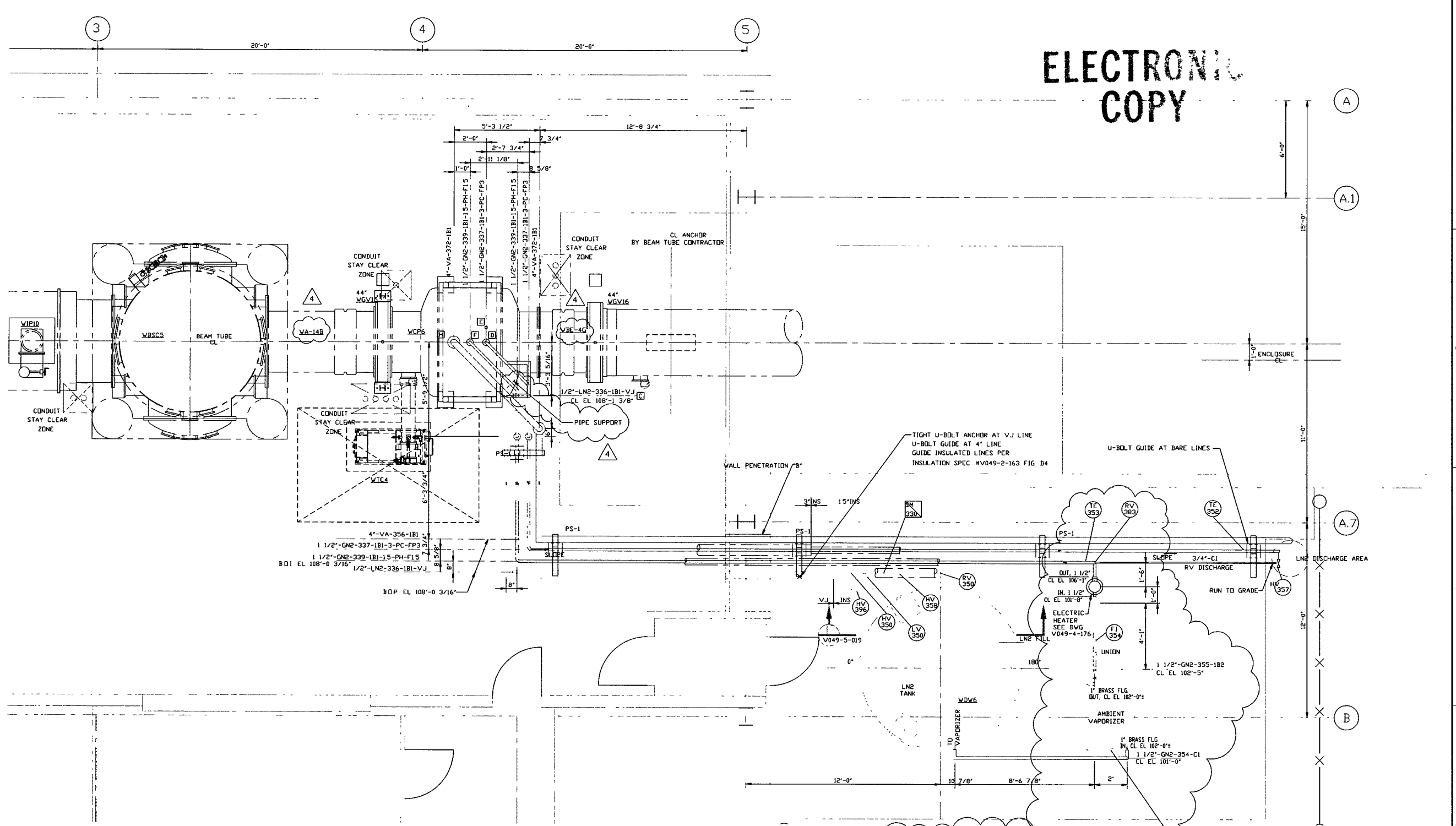
2 BRASS 4-HOLE FLANGES ARE PROVIDED WITH AMBIENT VAPORIZERS THEY ARE TO BE SILVER SOLDER BRAZED TO AN ADAPTER TO S/S PIPE, TO BE PROVIDED BY SITE CONTRACTOR

SEE SHEET 1 FOR REVISIONS

PROCESS SYSTEMS INTERNATIONAL INC. 20 WALKUP DR WESTBOROUGH, MASSACHUSETTS 01581 USA			
LN2/GN2 ARRGT - UPPER PLAN (LEFT)			
RIGHT MID STATION			
WASHINGTON SITE			
LIGO VACUUM EQUIPMENT			
CAD FILE	SIZE	DWG. NO.	REV
V0495017/S017S2	D	V049-5-017	4
SCALE	SHEET		REV
3/8"=1'-0"	2 OF 4		

JUN 15 1998 13:34:05

**ELECTRONIC
COPY**



NOTE 1. FIELD TO DETERMINE ACTUAL ELEVATIONS OF NOZZLES BEFORE FABRICATION OF PIPING.

NOTE 2. BRASS 4-HOLE FLANGES ARE PROVIDED WITH AMBIENT VAPORIZERS THEY ARE TO BE SILVER SOLDER BRAZED TO AN ADAPTER TO S/S PIPE, TO BE PROVIDED BY SITE CONTRACTOR.

SEE SHEET 1 FOR REVISIONS

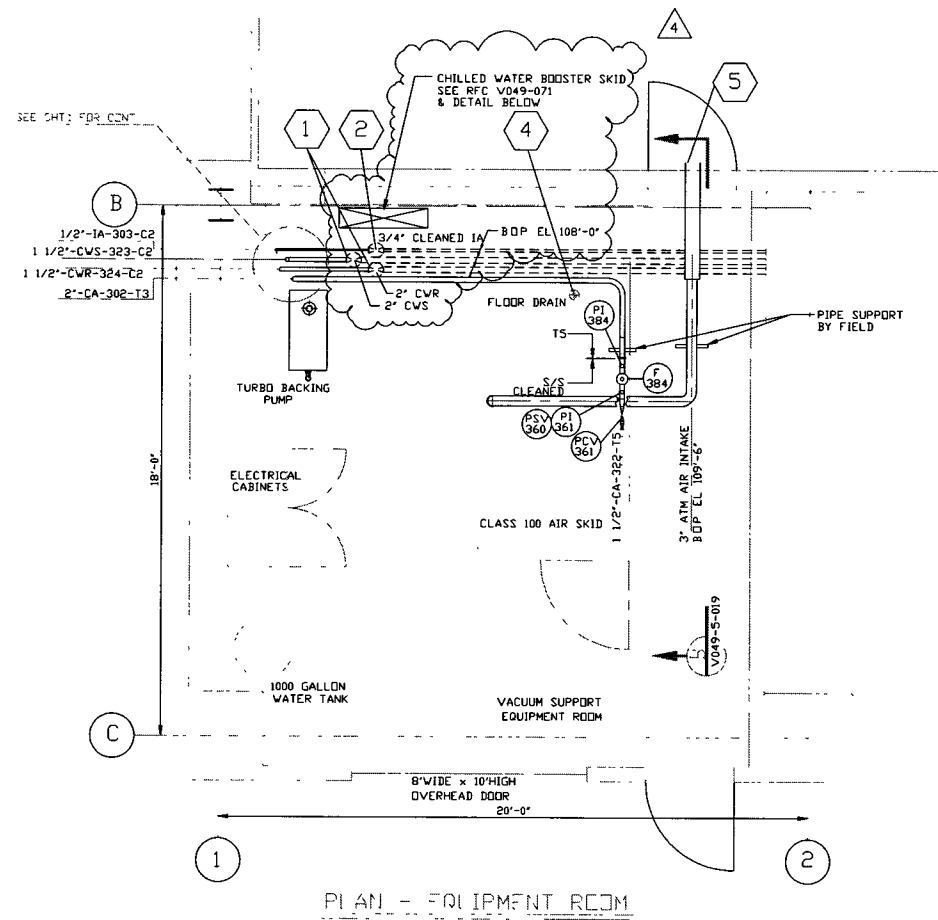
PROCESS SYSTEMS INTERNATIONAL, INC.
20 WALKUP DR WESTBOROUGH, MASSACHUSETTS 01581 USA

LN2/GN2 ARRG - UPPER PLAN(RIGHT)
RIGHT MID STATION
WASHINGTON SITE
LIGO VACUUM EQUIPMENT

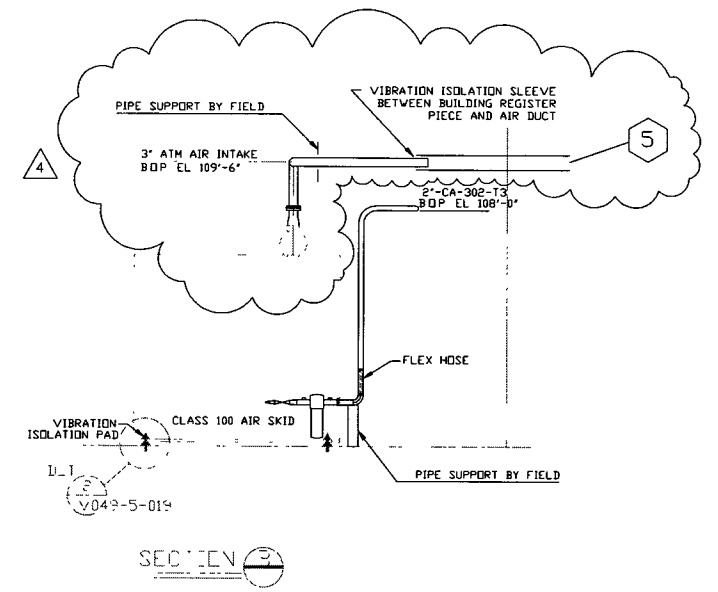
CAD FILE	SIZE	ENG. NO.	REV.
V0495017/501753	D	V049-5-017	4
SCALE	SHEET		
3/8"=1'-0"	3 OF 4		

JUN 15 1998 - 140950

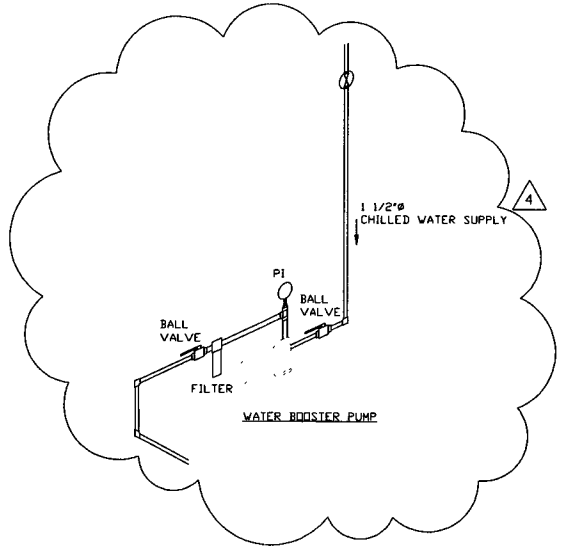
EDUCATION VERSION - NOT FOR COMMERCIAL USE



PLAN - EQUIPMENT ROOM



SECTION



ELECTRONIC COPY

SEE SHEET 1 FOR REVISIONS

PROCESS SYSTEMS INTERNATIONAL, INC. 20 WALKUP DR. WESTBOROUGH, MASSACHUSETTS 01581 USA			
PIPING ARRGT PLAN - EQUIPMENT RM RIGHT MID STATION WASHINGTON SITE LIGO VACUUM EQUIPMENT			
CAD FILE	SIZE	ENG NO.	REV
V0495017/5017S4	D	V049-5-017	4
SCALE	SHEET		4 OF 4
3/8"=1'-0"			

EDUCATION VERSION - NOT FOR COMMERCIAL USE

8 7 6 5 4 3 2 1

JUN 02 1998 16:44:39