

**NOT FOR
CONSTRUCTION**

Raymond O. Leatta, P.E.
5/7/96

| | | | | | | | | | | | |
|---|--|--|--|----------------------------------|--|--------------------------|--|-------------------------|--|---------------------|--|
| <p>NOTARY AND CONFIDENTIAL</p> <p>THIS DRAWING CONTAINS PROPRIETARY INFORMATION BELONGING TO PROCESS SYSTEMS INTERNATIONAL, INC. OR ITS AFFILIATED COMPANIES AND SHALL BE USED ONLY FOR THE PURPOSE FOR WHICH IT WAS SUPPLIED. IT SHALL NOT BE COPIED, REPRODUCED OR OTHERWISE USED, NOR SHALL SUCH INFORMATION BE FURNISHED IN WHOLE OR IN PART TO OTHERS EXCEPT IN ACCORDANCE WITH THE TERMS OF ANY AGREEMENT UNDER WHICH IT WAS SUPPLIED OR WITH THE PRIOR WRITTEN CONSENT OF PROCESS SYSTEMS INTERNATIONAL, INC. AND SHALL BE RETURNED UPON REQUEST.</p> | | <p>UNLESS OTHERWISE SPECIFIED DIMENSIONS ARE IN INCHES</p> <p>TOLERANCES: FRACTIONS: ANGULAR 1/4" 3/16" 1/8" 3/32" 1/16" DECIMALS: 0.005 0.010 0.015 0.020 0.030 0.040 0.050 0.060 0.070 0.080 0.090 0.100 0.125 0.150 0.175 0.200 0.250 0.300 0.375 0.450 0.500 0.625 0.750 0.875 1.000 1.250 1.500 1.750 2.000 2.500 3.000 3.750 4.500 5.000 6.000 7.500 9.000 10.000 12.500 15.000 17.500 20.000 25.000 30.000 37.500 45.000 50.000 60.000 75.000 90.000 100.000 125.000 150.000 175.000 200.000 250.000 300.000 375.000 450.000 500.000 600.000 750.000 900.000 1000.000</p> | | <p>DO NOT SCALE THIS DRAWING</p> | | <p>ISSUED FOR FOR</p> | | <p>DATE</p> | | <p>SCALE</p> | |
| <p>USE D</p> | | <p>REV</p> | | <p>DESCRIPTION</p> | | <p>ISSUE DESCRIPTION</p> | | <p>SCALE 3/8"=1'-0"</p> | | <p>SHEET 1 OF 4</p> | |
| <p>REFERENCE DRAWINGS</p> | | <p>DESCRIPTION</p> | | <p>DESCRIPTION</p> | | <p>DESCRIPTION</p> | | <p>DESCRIPTION</p> | | <p>DESCRIPTION</p> | |

PROCESS SYSTEMS INTERNATIONAL, INC.
20 WALKUP DR. WESTBOROUGH, MASSACHUSETTS 01581 USA

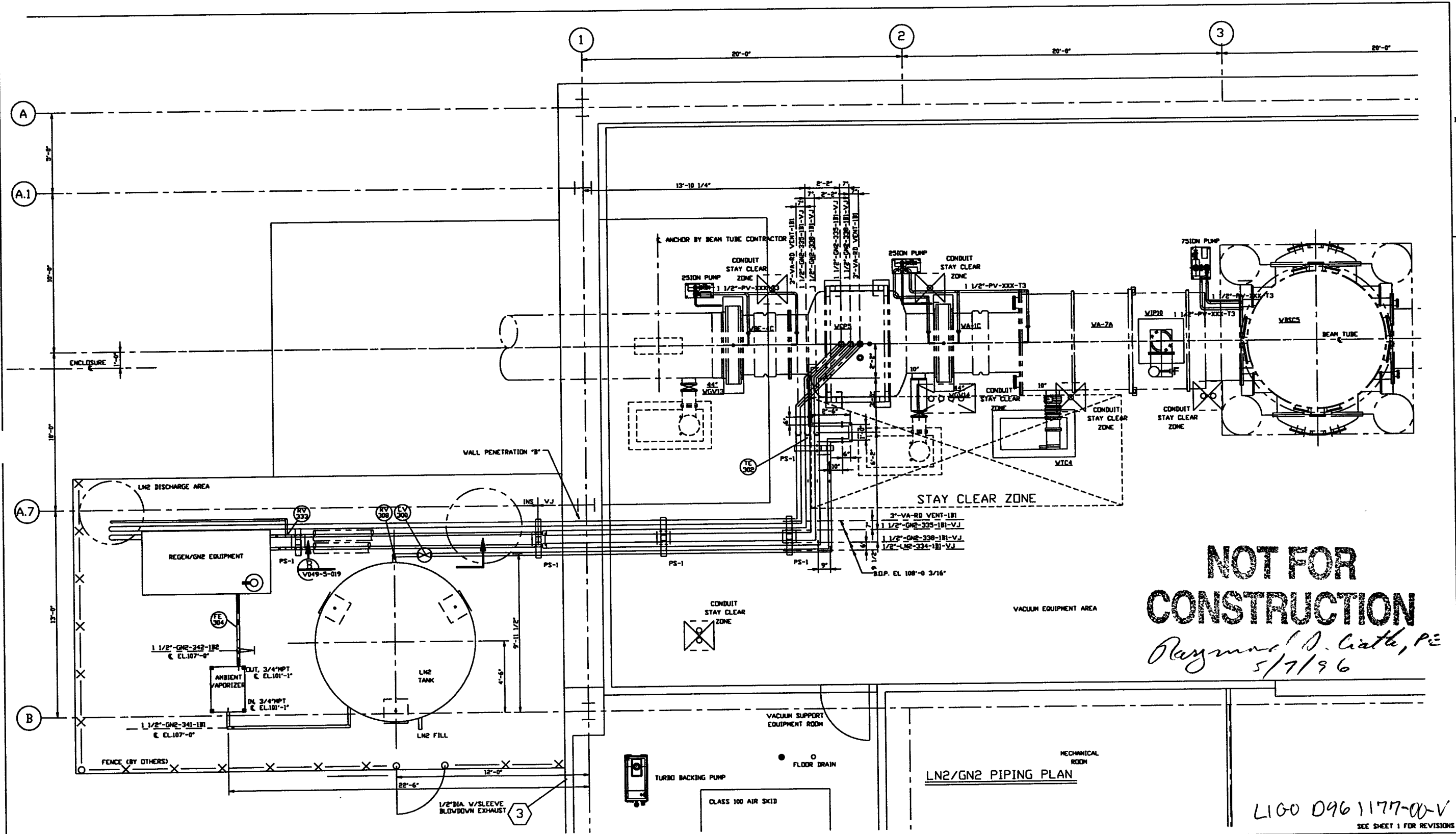
VAC/UTIL PIPE ARRGT - LOWER PLAN
RIGHT MID STATION
WASHINGTON SITE
LIGO VACUUM EQUIPMENT

CAD FILE: V0495017/5017S1
REV: D
REV: 0

SCALE: 3/8"=1'-0"
SHEET: 1 OF 4

L100 1096117700-V

DEC 07 1994 - 11:56:27



**NOT FOR
CONSTRUCTION**

*Raymond D. Ciatta, P.E.
5/7/96*

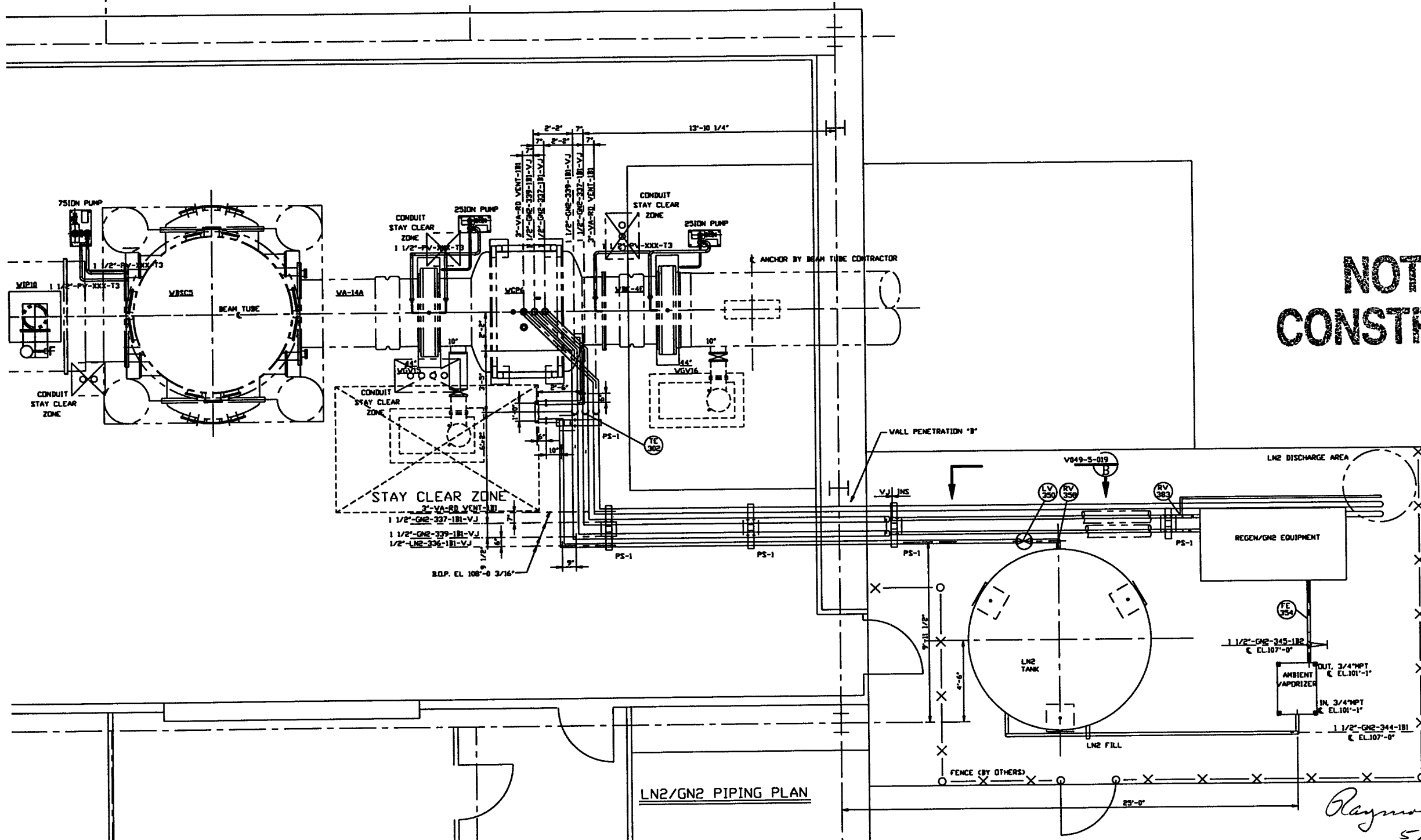
LN2/GN2 PIPING PLAN

L100 0961177-00-V
SEE SHEET 1 FOR REVISIONS

| | | | |
|--|-----------|-----------------------|-----------|
| PROCESS SYSTEMS INTERNATIONAL, INC. 20 BULKUP DR. WESTBOROUGH, MASSACHUSETTS 01581 USA | | | |
| LN2/GN2 ARRGT - UPPER PLAN (LEFT) RIGHT MID STATION WASHINGTON SITE LIGD VACUUM EQUIPMENT | | | |
| CAD FILE V0495017/501752 | SIZE D | DWG NO. V049-5-017 | REV. 0 |
| SCALE 3/8"=1'-0" | | SHEET 2 OF 4 | |

DEC 07, 1994 - 112824

3 20'-0" 4 20'-0" 5



**NOT FOR
CONSTRUCTION**

LN2/GN2 PIPING PLAN

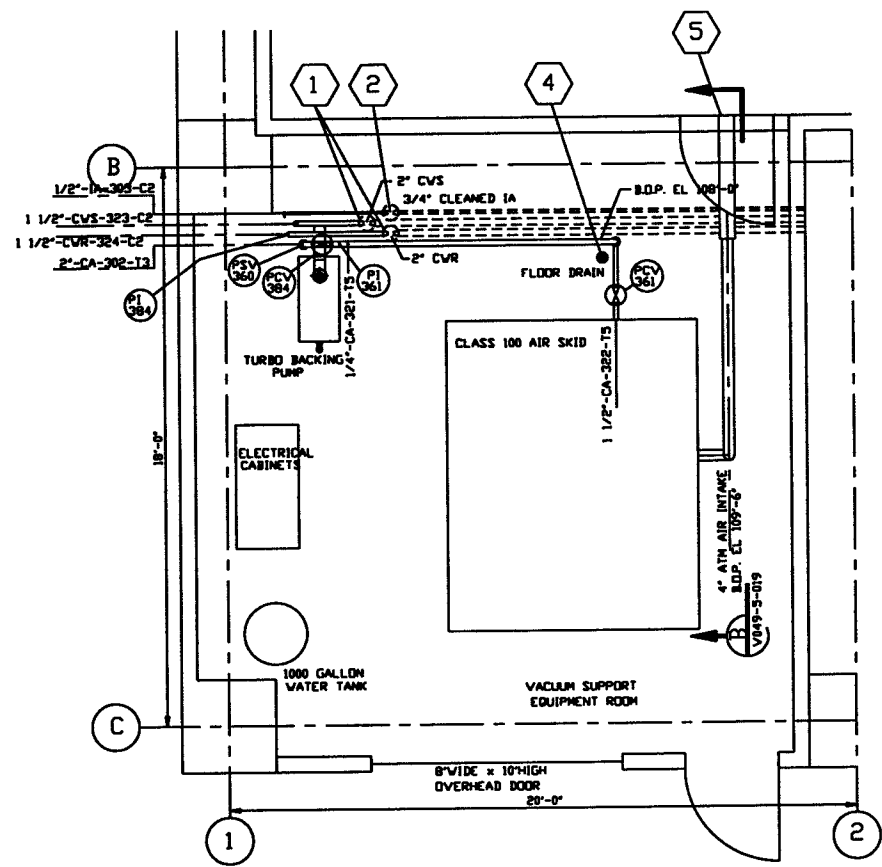
Raymond O. Catto, PE
5/7/96

SEE SHEET 1 FOR REVISIONS

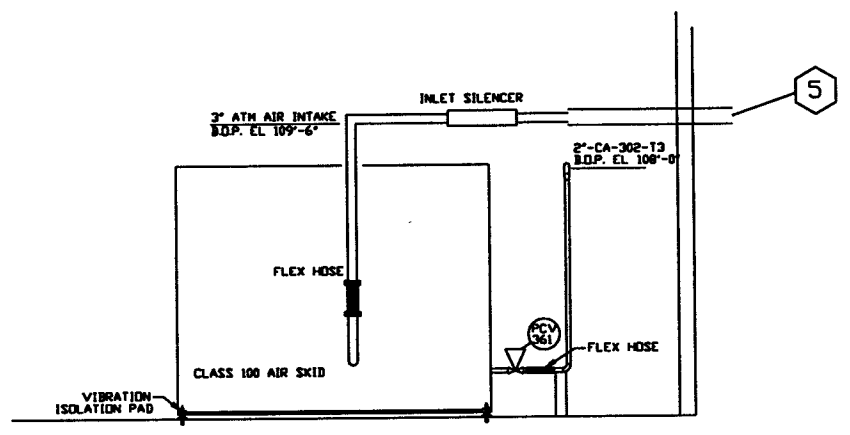
| | | | |
|--|------|--------------|------|
| PROCESS SYSTEMS INTERNATIONAL INC. 20 WALRUP DR. WESTBOROUGH, MASSACHUSETTS 01581 USA | | | |
| LN2/GN2 ARRG - UPPER PLANK(RIGHT) RIGHT MID STATION WASHINGTON SITE LIGO VACUUM EQUIPMENT | | | |
| CAD FILE | SIZE | DWG. NO. | REV. |
| V0495017/501753 | D | V049-5-017 | 0 |
| SCALE 3/8"=1'-0" | | SHEET 3 OF 4 | |

LIGO 0961177-00-V

INC 07 1994 - 110834



PLAN - EQUIPMENT ROOM



SECTION B

NOT FOR CONSTRUCTION

Raymond S. Coatta, P.E.
 5/7/96

SEE SHEET 1 FOR REVISIONS

| | | | |
|--|--------------------------------|---------------------------------------|--------------------------|
| PROCESS SYSTEMS INTERNATIONAL INC. <small>30 WINDUP DR. WESTBOROUGH, MASSACHUSETTS 01581 USA</small> | | | |
| PIPING ARRGT PLAN - EQUIPMENT RM RIGHT MID STATION WASHINGTON SITE LIGD VACUUM EQUIPMENT | | | |
| <small>CAD FILE</small> V0495017/501754 | <small>SIZE</small> D | <small>PKG. NO.</small> V049-5-017 | <small>REV.</small> 0 |
| <small>SCALE</small> 3/8"=1'-0" | <small>SHEET</small> 4 OF 4 | | |

LIGD 10961177-00-V

DEC 07, 1994 - 11:58:04