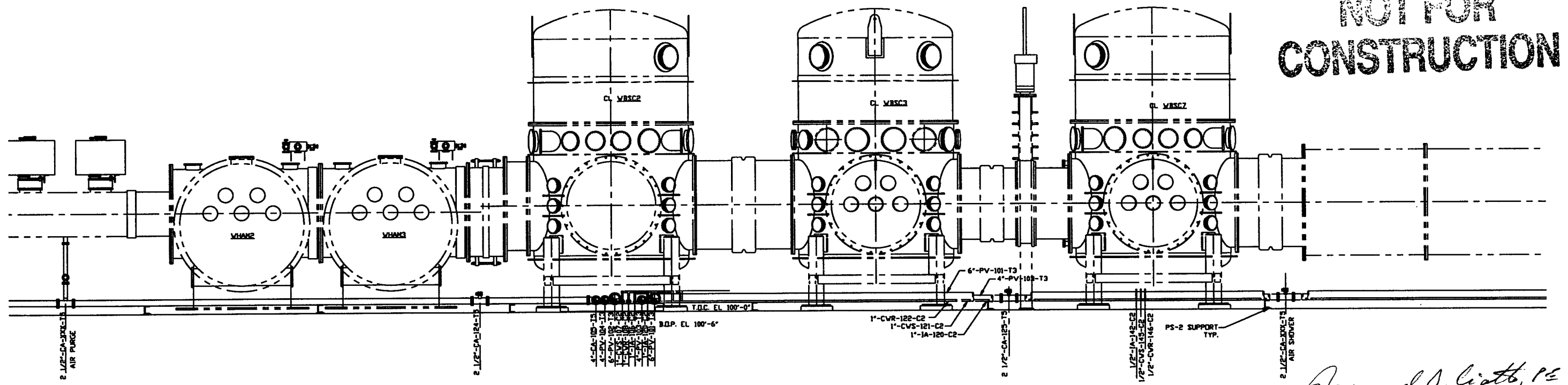


ELEVATION J
V049-5-012, SHT.2

**NOT FOR
CONSTRUCTION**

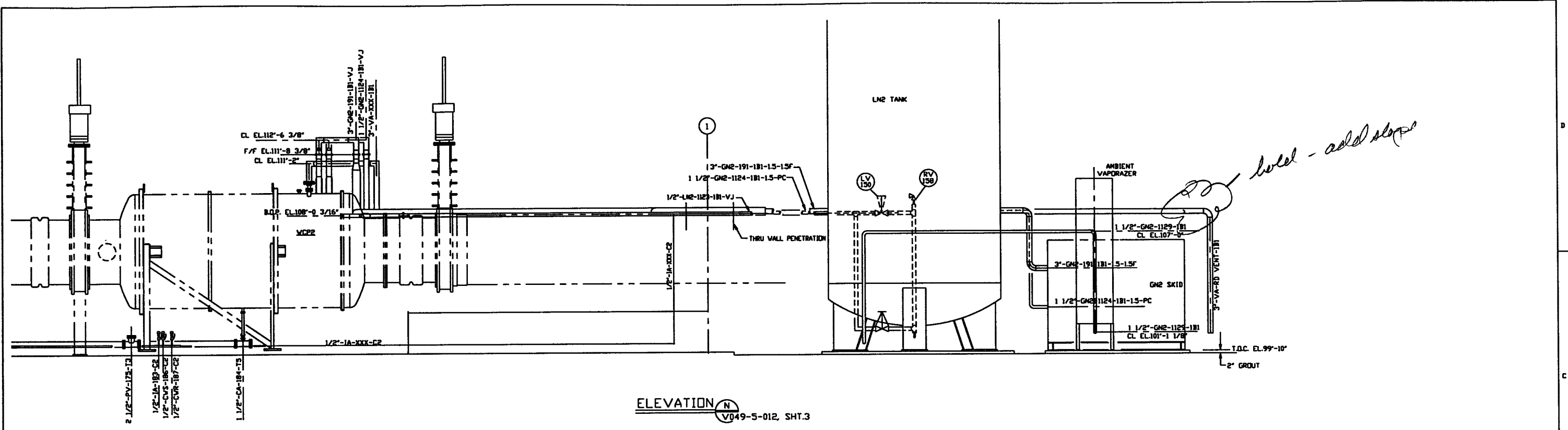


ELEVATION K
V049-5-012, SHT.1

Raymond S. Liatt, PE
5/7/96
LIGO D961175-00-V

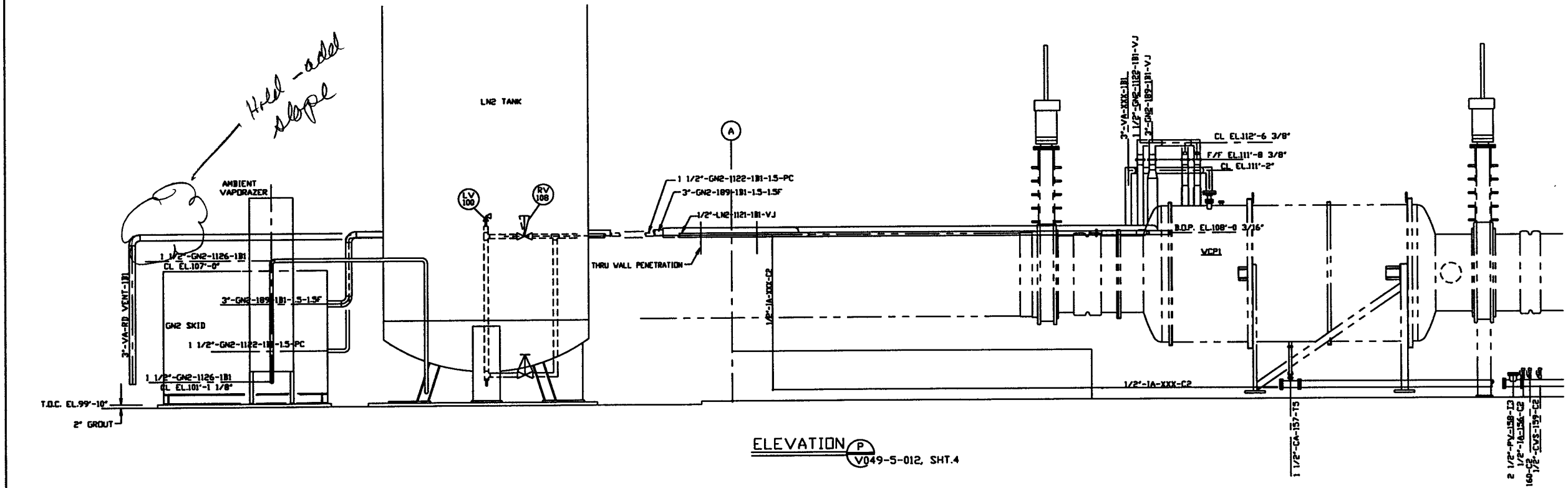
PROPRIETARY AND CONFIDENTIAL THIS DOCUMENT CONTAINS PROPRIETARY INFORMATION BELONGING TO PROCESS SYSTEMS INTERNATIONAL, INC. OR ITS AFFILIATED COMPANIES AND SHALL BE USED ONLY FOR THE PURPOSE FOR WHICH IT WAS SUPPLIED. IT SHALL NOT BE COPIED, REPRODUCED OR OTHERWISE USED AND SHALL BE RETURNED TO THE SUPPLIER IN WHOLE OR IN PART TO THE SUPPLIER UPON REQUEST. THE USER SHALL BE RESPONSIBLE FOR OBTAINING THE NECESSARY PERMISSIONS FROM THE APPLICABLE AGENCIES FOR THE REPRODUCTION OR DISTRIBUTION OF THIS DOCUMENT.		UNLESS OTHERWISE SPECIFIED DIMENSIONS ARE IN INCHES TOLERANCES: FINISHES: FRACTIONAL & ANGULAR APPROX. & BEND & TWO PLACE DECIMAL & THREE PLACE DECIMAL & FINISHED SURFACE RING BREAK CORNERS TO REMOVE ALL BURRS		DO NOT SCALE THIS DRAWING USED ON: _____ NEXT ASS'Y: _____		ISSUED FOR FINAL DESIGN REVIEW REV: _____ DESCRIPTION: _____ ISSUE DESCRIPTION: _____		D.M. [Signature] RN 5.3.95 0153 CHKD: _____ DRWN: _____ DATE: _____ DED: _____		PROCESS SYSTEMS INTERNATIONAL, INC. 20 WALKUP DR. WESTBOROUGH, MASSACHUSETTS 01581 USA PIPING ARRANGEMENT ELEVATIONS CORNER STATION WASHINGTON LIGO VACUUM EQUIPMENT DWG. NO. 1101100 DESCRIPTION LIGO VACUUM EQUIPMENT CORNER STATION DWG. NO. _____ DESCRIPTION _____ REFERENCE DRAWINGS: _____ SCALE: 3/8"=1'-0" SHEET 1 OF 2	
--	--	--	--	--	--	--	--	--	--	--	--

May 07, 1996 - 131526



ELEVATION N
V049-5-012, SHT.3

hold - add slope



ELEVATION P
V049-5-012, SHT.4

Hold - add slope

NOT FOR CONSTRUCTION

Raymond D. Carthy
5/7/96
L2G0 D961175-00V

PROCESS SYSTEMS INTERNATIONAL INC. 20 WALKUP DR. WESTBOROUGH, MASSACHUSETTS 01581 USA			
PIPING ARRANGEMENT ELEVATIONS CORNER STATION WASHINGTON L2G0 VACUUM EQUIPMENT			
CAD FILE	SIZE	ENG. NO.	REV.
V0495013/501352	D	V049-5-013	0
SCALE 3/8"=1'-0"	SHEET		2 OF 2

May 07, 1996 - 12:38:22