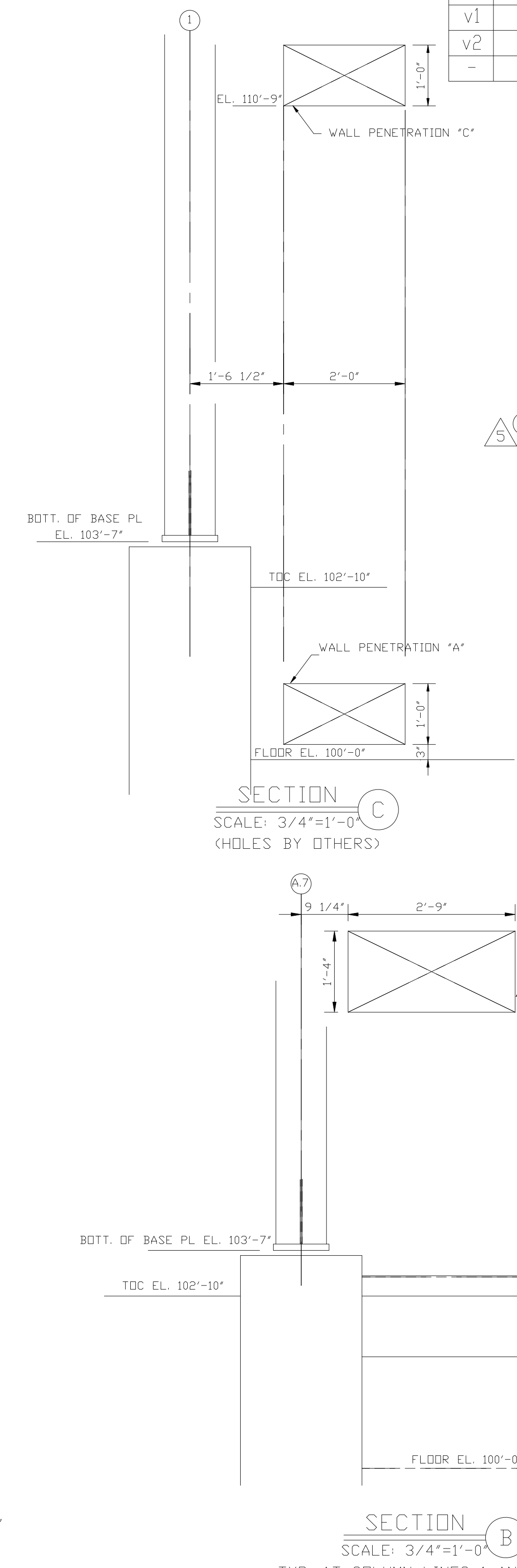
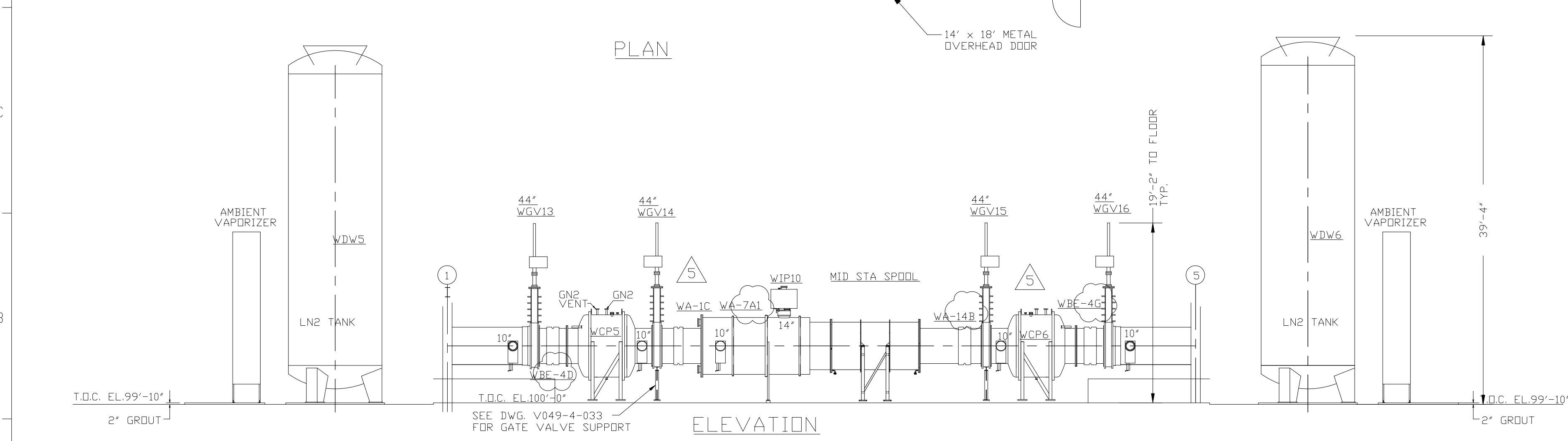
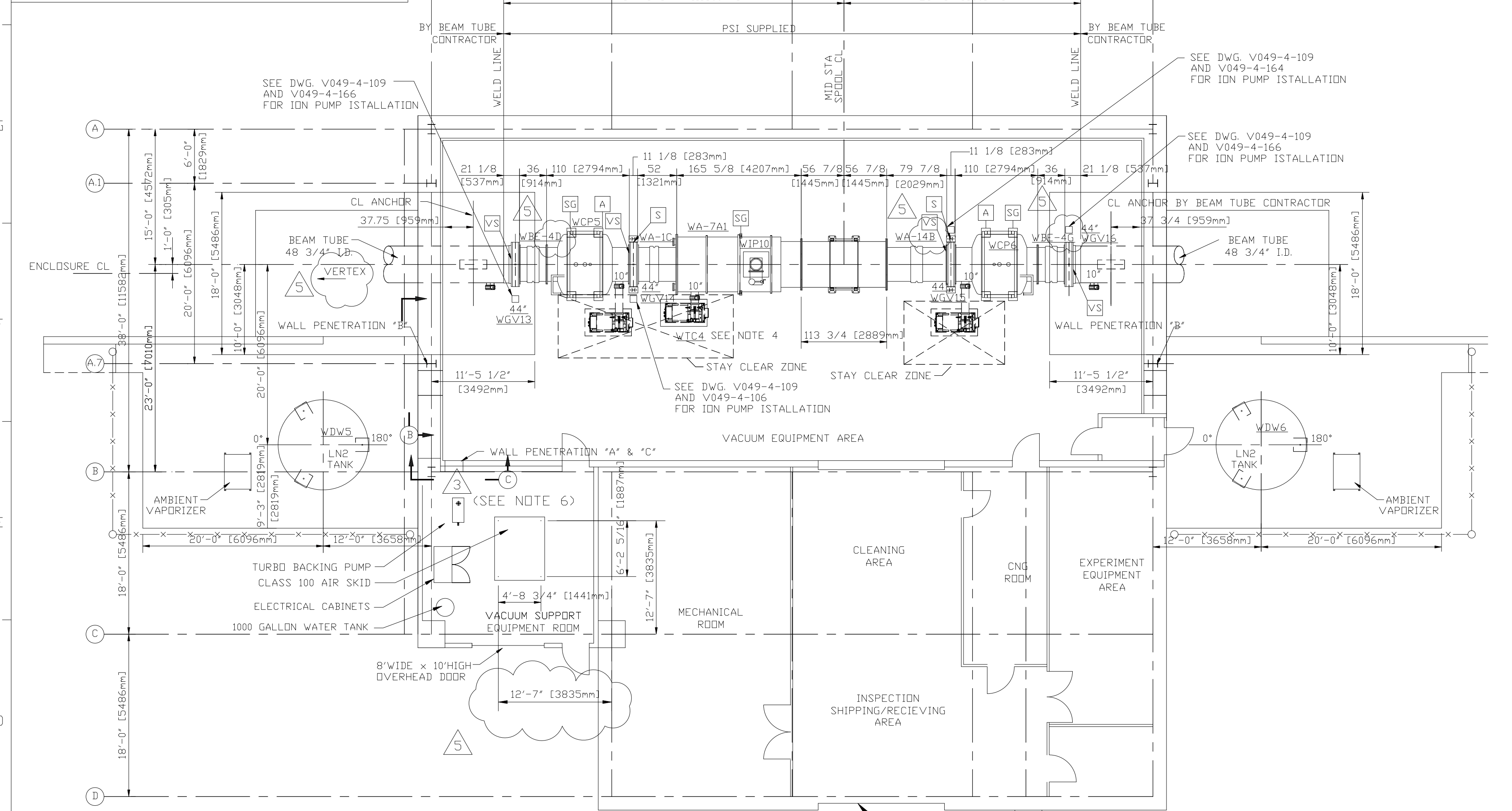


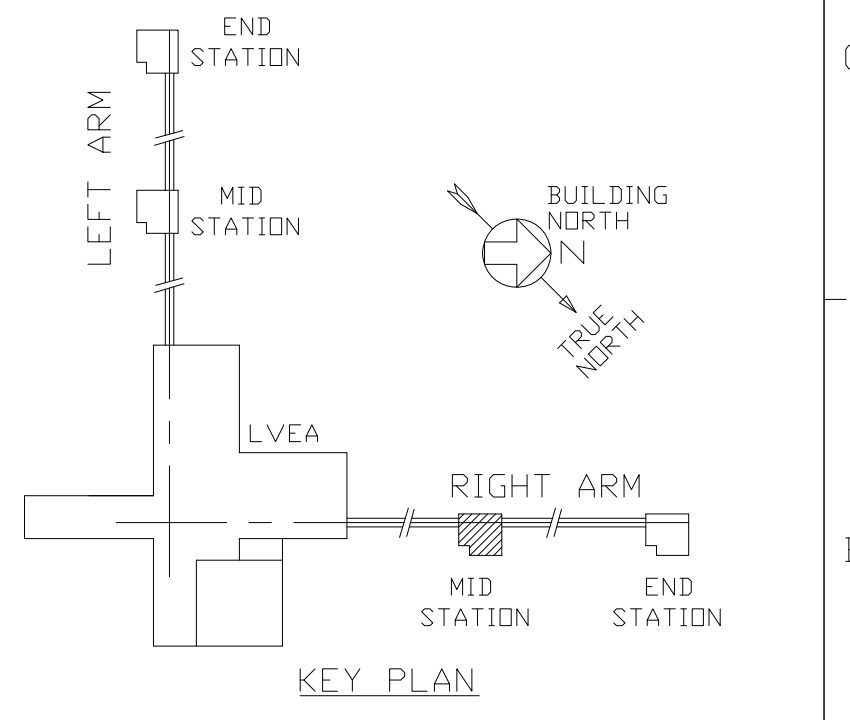
DWG. NO.	DESCRIPTION
V049-0-100	DRAWING TREE/BDM STRUCTURE
V049-0-001	P&ID FOR LIGO VACUUM EQUIPMENT
V049-2-021	SPEC. FOR INSTALLATION/COMMISSIONING
WA-A-201	PARSONS ARCHITECTURAL MID STATIONS FLOOR PLAN
1101103	LIGO VACUUM EQUIPMENT MID STATIONS

REV.	DATE	DCN #	DRAWING TREE #
v1	01 MAR 1996	-	-
v2	04 JAN 2012	E1300006-x0	-
-	-	-	-



- NOTES:
- ALL GATE VALVES ARE SUPPLIED BY PSI. NOTE: SPECIAL BOLTS AND WASHERS ARE REQUIRED TO CONNECT SPOOL FLANGES TO 44" AND 48" GATE VALVES. USE PSI P/N 203567 FOR BOLTS AND PSI P/N 203568 FOR WASHERS. SEE BUILDING BDM V049100WA FOR MATERIALS. FOR ORIENTATION OF LARGE GATE VALVES SEE SIDE OF VALVE NOTED BY SYMBOL 'VS' IN PLAN BELOW. ALL 6", 10" & 14" GATE VALVES ARE TO HAVE SEAL SIDE MOUNTED TOWARD VESSEL.
  - SEE SPEC. V049-2-021 FOR INSTALLATION/COMMISSIONING INFORMATION.
  - FOR TUBING / PIPE SUPPORT REQUIREMENTS, SEE SPEC. V049-2-021, SECTION 10.
  - SEE DWG. V049-4-011 FOR TURBO PUMP CART INSTALLATION. 1 UNIT REQUIRED PER MID STATION BUILDING.
  - LN TANK ANCHOR BOLTS BY OTHERS.
  - FOR ANCHOR BOLT AND VIBRATION ISOLATION PAD REQUIREMENTS FOR VACUUM SUPPORT ROOM EQUIPMENT AND ELECTRICAL CABINETS, SEE DWG V049-4-019, DETAIL 2.

- SUPPORTS LEGEND
- A 3 WAY ANCHOR
  - SG SUPPORT/GUIDE (AXIALLY FLEXIBLE)
  - S VALVE SUPPORT
  - GATE VALVE ION PUMP LOCATION
  - VS VALVE SEAL SIDE



MATERIAL		FINISH		NEXT ASSY	
N/A		N/A minch		N/A	

CALIFORNIA INSTITUTE OF TECHNOLOGY MASSACHUSETTS INSTITUTE OF TECHNOLOGY		PART NAME <b>EQUIPMENT ARRANGEMENT PLAN, RIGHT MID STA AREA 300</b> <b>WASHINGTON, LIGO VACUUM EQUIPMENT</b>	
SYSTEM <b>ADVANCED LIGO</b>	SUB-SYSTEM <b>SYS</b>	DESIGNER E.SANCHEZ	DATE 04 JAN 2012
CHECKER D.COYNE	DATE 04 JAN 2012	SIZE D	DWG. NO. <b>D961168</b>
APPROVAL D.COYNE	DATE 04 JAN 2012	SCALE: 1/8" = 1' - 0"	PROJECTION:
			REV. <b>v2</b>
			SHEET 1 OF 1

NOTE:  
\*REPLACES WITH CHANGE DRAWING V049-5-004, REV-5.