

**DETAIL 1**  
SCALE: 1 1/2"=1'-0"  
QTY (2)

**NOT FOR  
CONSTRUCTION**

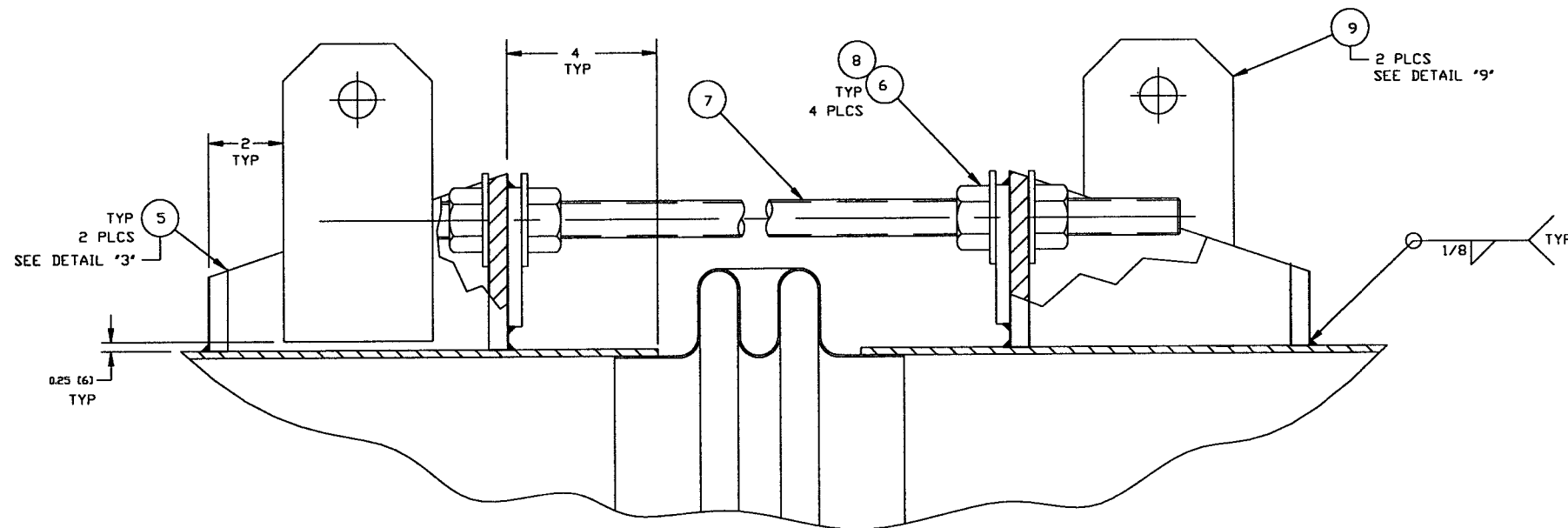
*Raymond D. Little, PE*  
5/7/96

*11009*

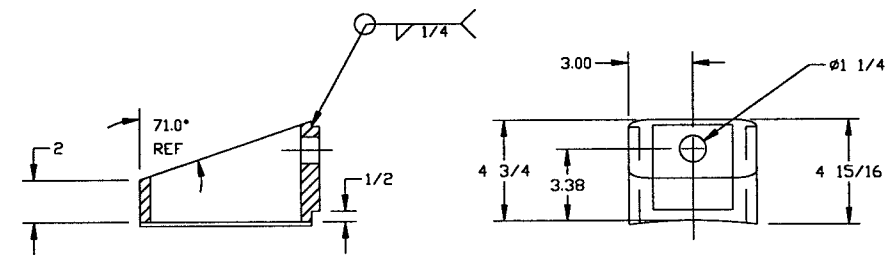
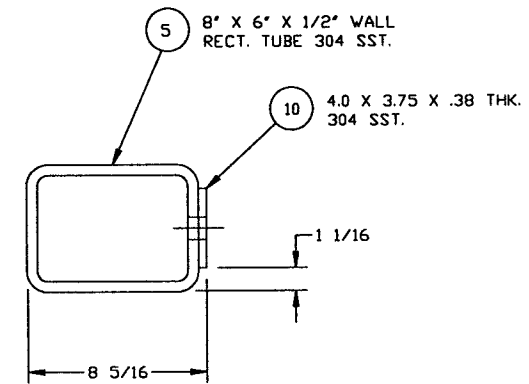
LIGO D961163-00-V  
SEE SHEET 1 FOR REVISIONS

<b>PROCESS SYSTEMS INTERNATIONAL, INC.</b> <small>20 WALKUP DR. WESTBOROUGH, MASSACHUSETTS 01581 USA</small>			
SPOOL BE-4 44.62" ID LIGO VACUUM EQUIPMENT			
CAD FILE 4BE4SE	SIZE D	DWG. NO. V049-4-BE4	REV. 0
SCALE AS NOTED	SHEET 2 OF 3		

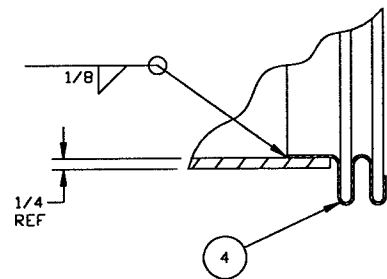
Mar 21, 1996 - 113510



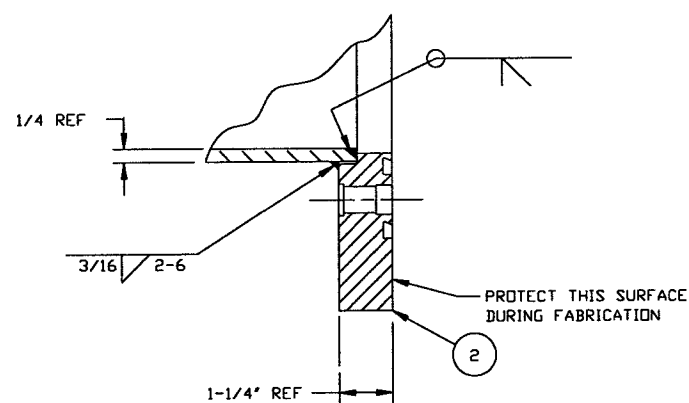
DETAIL "2"  
EXPANSION JOINT & TIE ROD ASSY.  
QTY: 3



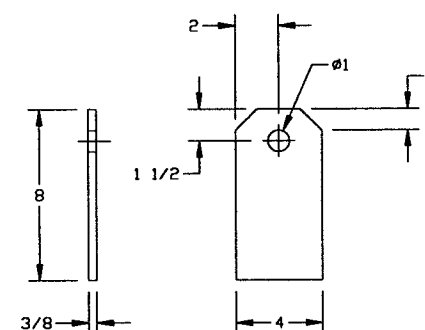
DETAIL "3"  
QTY: 6



DETAIL "6"  
QTY: 2



DETAIL "5"



DETAIL "9"  
QTY: 2

**NOT FOR CONSTRUCTION**

*Raymond D. Cortis, PE*  
5/7/96

*HOLD*

LIGO D96116300-V

<b>PROCESS SYSTEMS INTERNATIONAL INC.</b> 20 WALKUP DR. WESTBOROUGH, MASSACHUSETTS 01581 USA			
SPool BE-4 44.62" ID LIGO VACUUM EQUIPMENT			
CAD FILE 4A1S3	SIZE D	DWG. NO. V049-4-BE4	REV 0
SCALE AS NOTED	SHEET 3 OF 3		

D  
C  
B  
A  
Mar 21, 1996 - 11:32:00

8      7      6      5      4      3      2      1