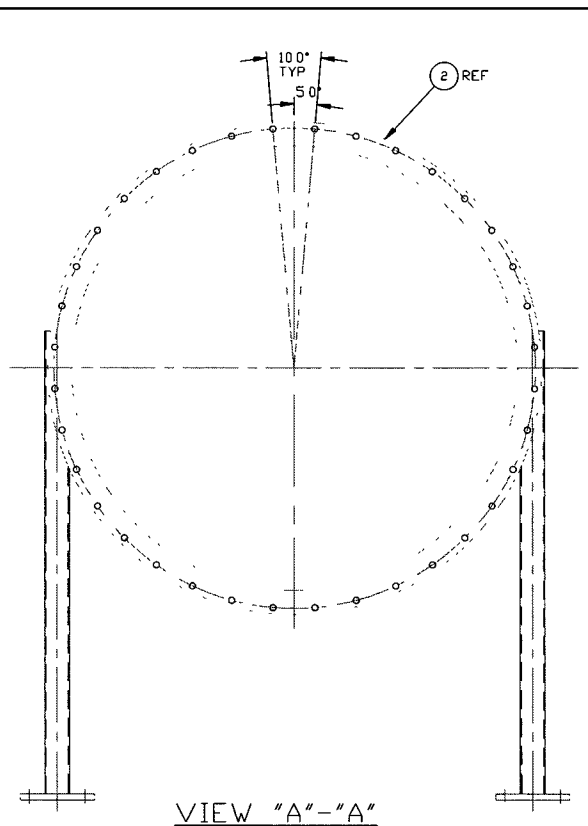
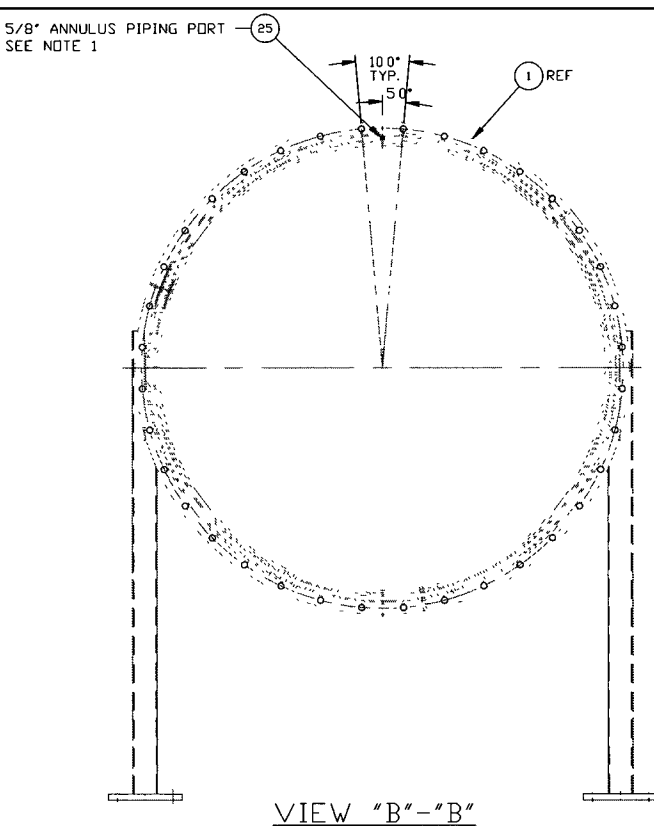


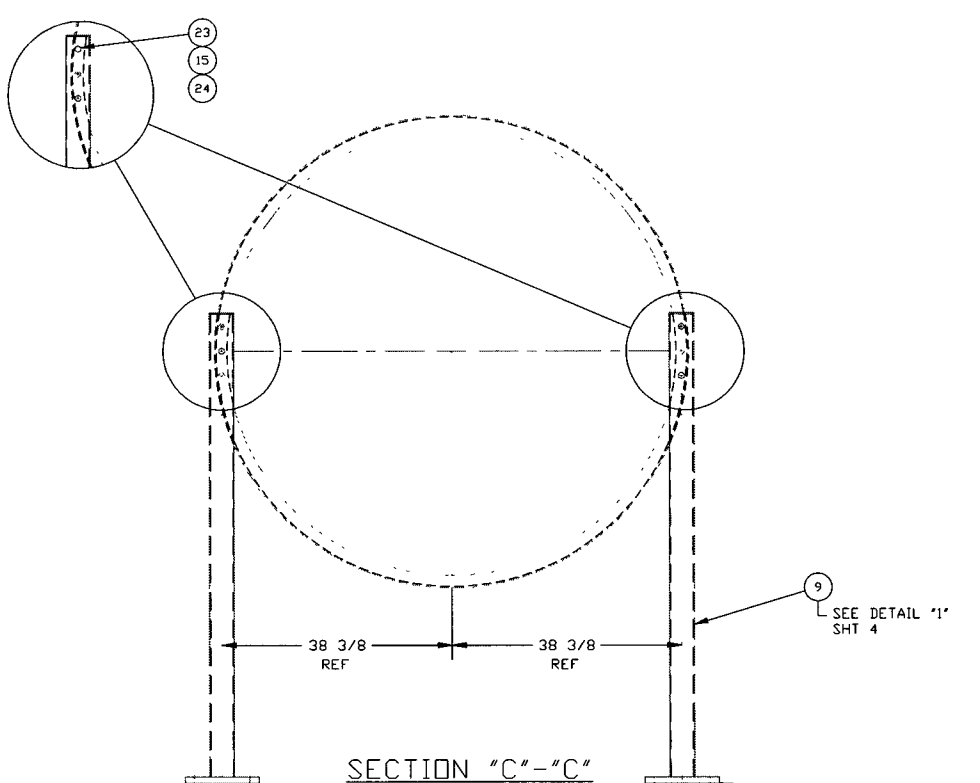
EDUCATION VERSION - NOT FOR COMMERCIAL USE



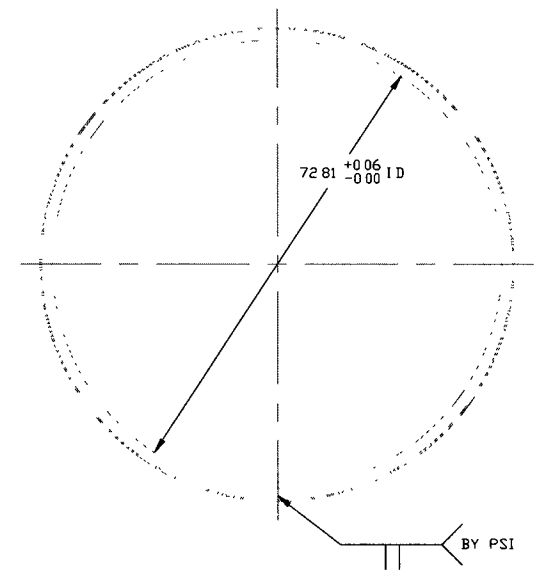
VIEW "A"- "A"



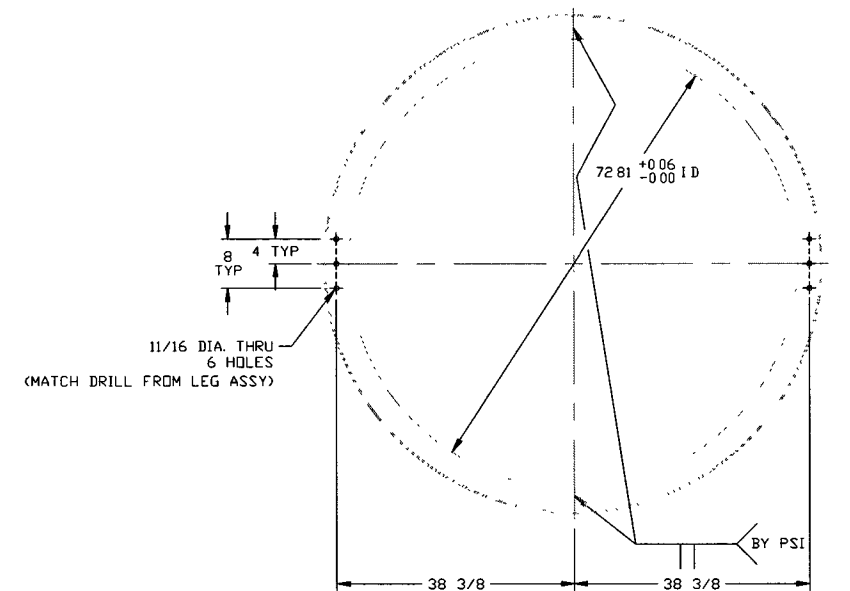
VIEW "B"- "B"



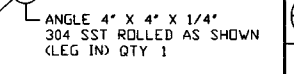
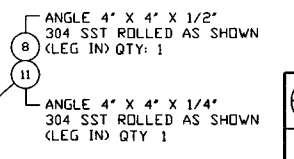
SECTION "C"- "C"



DETAIL "14"
QTY: 4



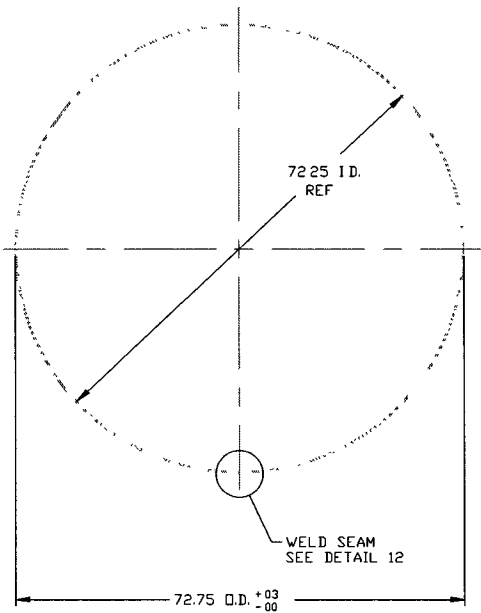
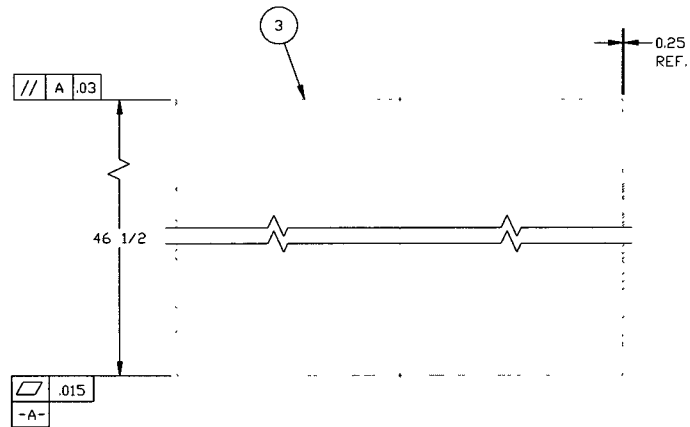
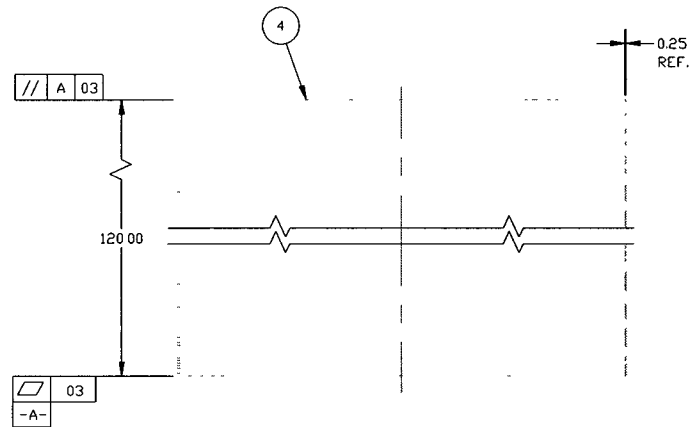
DETAIL "7"



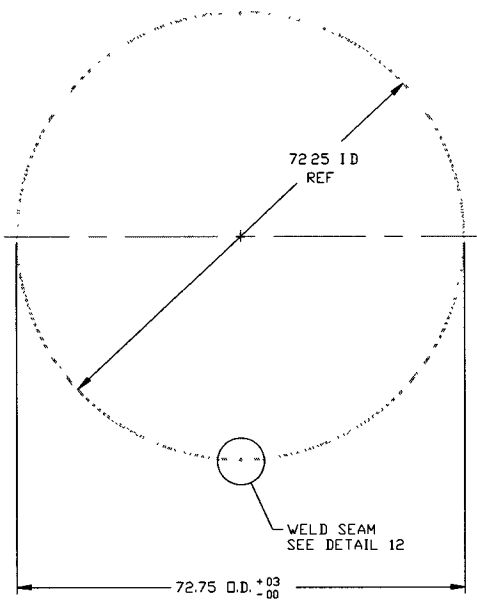
ELECTRONIC COPY

PROCESS SYSTEMS INTERNATIONAL INC. <small>20 WALKUP DR. WESTBOROUGH, MASSACHUSETTS 01581 USA</small>			
SPOOL B-9		72.25" I.D.	
LIGO VACUUM EQUIPMENT			
CAD FILE V0494B9/4B9S2	SIZE D	DWG. NO. V049-4-B9	REV 5
SCALE AS NOTED	SHEET 2 OF 4		NOV 26, 1996 - 08-01-38

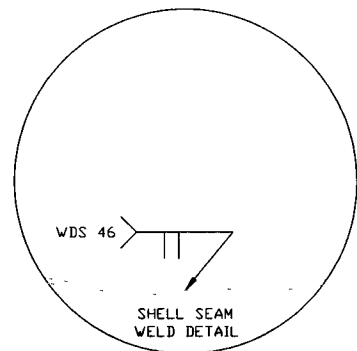
8 7 6 5 4 3 2 1



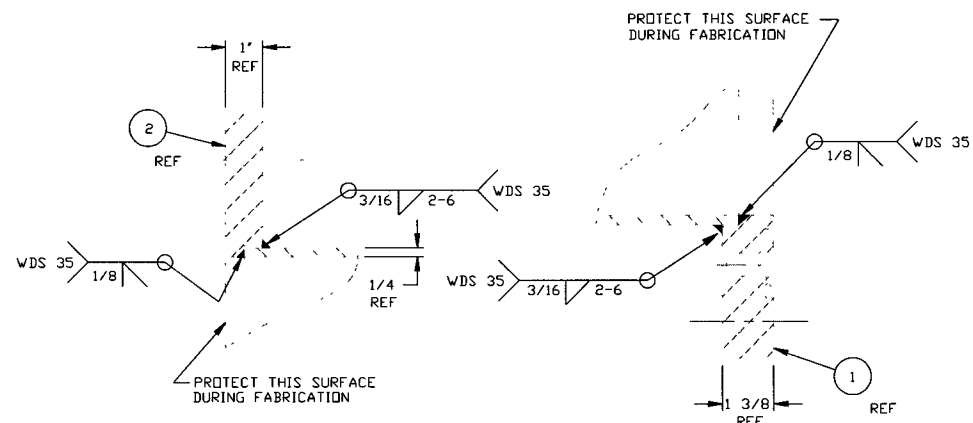
DETAIL "3"
QTY 3
MAKE FROM V049M154-1



DETAIL "15"
QTY 1
MAKE FROM V049M164-1

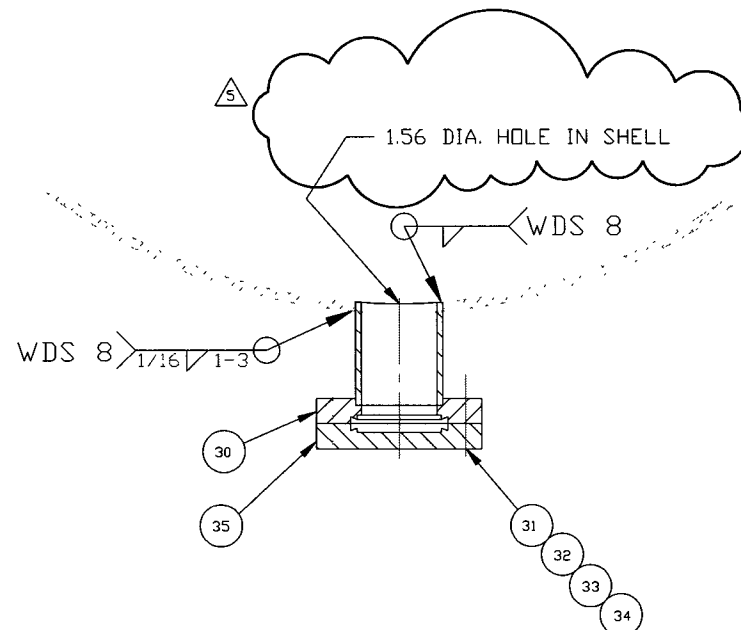


DETAIL "12"
SHELL SEAM
PREP & WELD



DETAIL "5"

DETAIL "4"



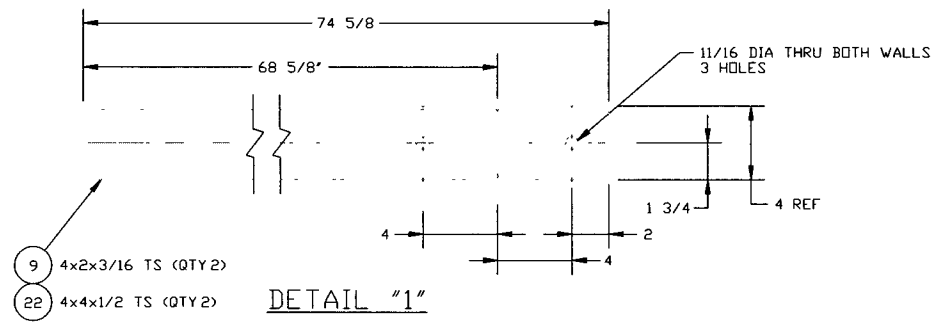
SECTION "S-S"

**ELECTRONIC
COPY**

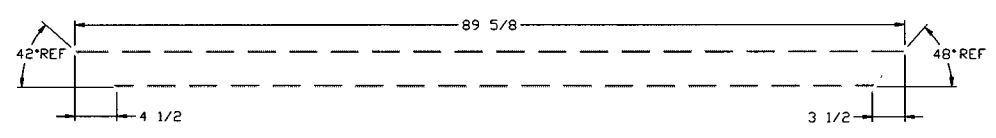
PROCESS SYSTEMS INTERNATIONAL INC. <small>20 WALKUP DR. WESTBOROUGH, MASSACHUSETTS 01581 USA</small>			
SPOOL B-9 72.25" I.D. LIGD VACUUM EQUIPMENT			
CAD FILE V049489/48953	SIZE D	DWG. NO. V049-4-B9	REV 5
SCALE AS NOTED	SHEET 3 OF 4		REV 5

NOV 26, 1996 - 08:28:05

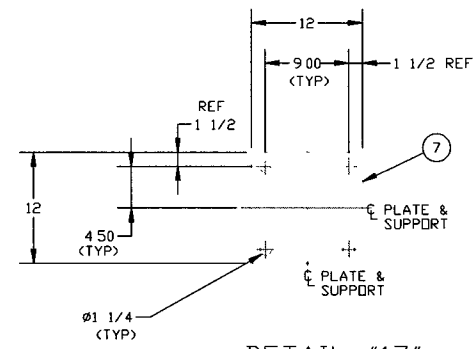
ELECTRONIC VERSION - NOT FOR COMMERCIAL USE



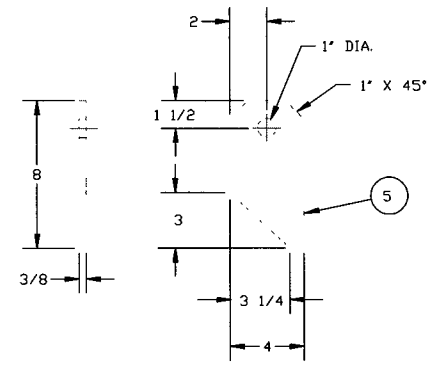
DETAIL "1"



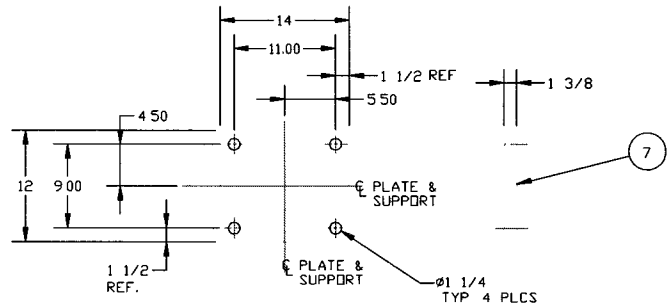
DETAIL "9"
QTY: 2



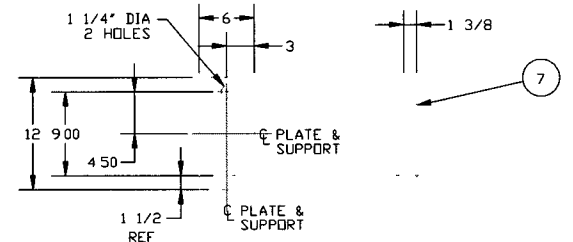
DETAIL "17"
QTY: 2



DETAIL "16"
QTY: 4



DETAIL "8"
QTY 2



DETAIL "2"
QTY: 2

ELECTRONIC COPY

SEE SHEET 1 FOR REVISIONS

PROCESS SYSTEMS INTERNATIONAL INC. 20 WALKUP DR WESTBOROUGH, MASSACHUSETTS 01581 USA			
SPOOL B-9 72 1/4" I.D. LIGO VACUUM EQUIPMENT			
CAD FILE V0494B9/4B954	SIZE D	REV. NO. V049-4-B9	REV 5
SCALE 1"=1'-0"	SHEET 4	OF 4	

EDUCATION VERSION - NOT FOR COMMERCIAL USE

8 | 7 | 6 | 5 | 4 | 3 | 2 | 1

REV 06, 1996 - 08/33/22