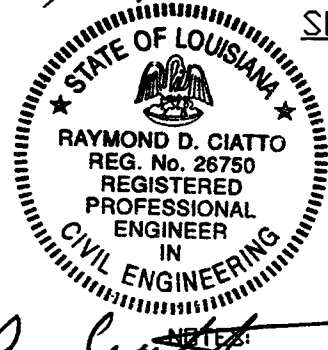
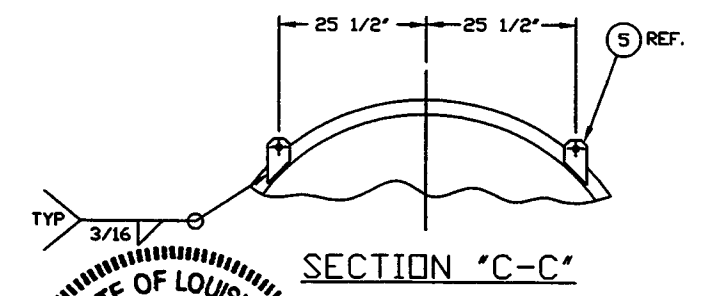
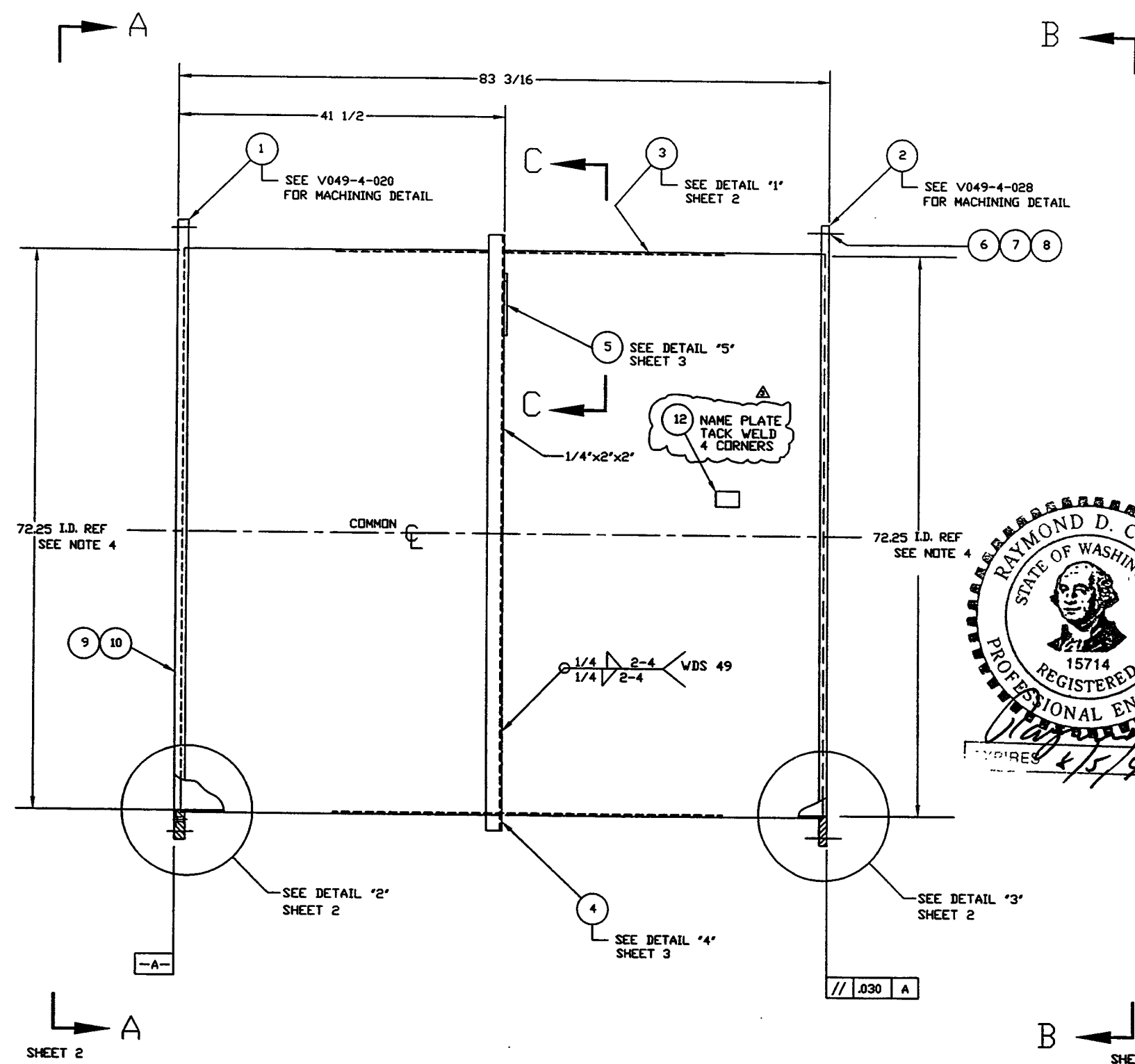


ITEM	PART NUMBER	SUFFIX	QTY	UM	DESCRIPTION
1	V0494020		1	EA	FLANGE, GROOVED, 72 1/4" ID X 80" OD
2	V0494028		1	EA	FLANGE, FLAT FACED, 72 1/4" ID X 80" OD
3	V049488P3		1	EA	SHELL, 304/304L SST, 1/4" THK
4	V049819		1	EA	SUPPORT RING, 304L SST, 2" x 2" x 1/4"
5	V049852		3	L5	FT BAR, 304 SST, 4x3/8 THK
* 6	202678		3	36	EA BOLT, SA 193 B7, HEX, 7/8-9UNCx4LG
* 7	202679		3	36	EA NUT, SA 194 2H, HEX, 7/8-9UNC
* 8	202581		3	72	EA WASHER, STL, 1 3/4 O.D.x15/16 I.D.x1/4 THK
9	V049020		1	EA	O-RING, VITRON, (PER SPEC V049-2-045)
10	V049021		1	EA	O-RING, VITRON, (PER SPEC V049-2-045)
11	V0494061		1	EA	3/4" O.D. ELBOV x 2 3/4" O.D. CONFLAT FLANGE
Δ 12	(V0491740)		1	EA	PSI NAME PLATE, 2" X 3"

* ELECTROLESS NICKEL PLATE



- NOTES:
1. THESE FLANGES EACH INCLUDE AN ANNULAR CHANNEL BETWEEN O-RINGS, MANIFOLD TO A SINGLE PUMPOUT PORT ON EACH CHAMBER, SEE DWG V049-4-061.
 2. FOR FLANGE DETAILS SEE DWG V049-4-020 & 028.
 3. SPOOL FABRICATION TO BE IN ACCORDANCE WITH SPEC. V049-2-097.
 4. THE CENTER LINES OF ALL SHELLS AND FLANGES ARE TO LIE ON THE COMMON CENTER LINE WITHIN +/- 1/16.
 5. DO NOT USE CARBON STEEL BRUSHES OR BRUSHES CONTAMINATED WITH CARBON STEEL ON STAINLESS OR ALUMINUM MATERIAL.
 6. CLEAN PER SPEC: V049-2-015
 7. BOLT HOLES OF ALL FLANGES TO STRADDLE VERTICAL CENTERLINE AS +/- .015.
 8. CERTIFIED MANUFACTURER'S MATERIAL TEST REPORTS REQUIRED, AS NOTED.
 9. LEAK TEST & METHOD PER PSI SPEC: V049-2-014
 10. MACHINING & ROLLING PER SPEC V049-2-136.
 11. PLATES PRIOR TO ROLLING MUST HAVE DIAGONAL CORNER TO CORNER DIMENSIONS WITHIN 1/16" OF EACH OTHER.
 12. EACH FINISHED SHELL IS TO BE MARKED WITH A SEQUENTIAL PSI SERIAL NUMBER. THE NUMBER IS TO BE MADE FROM THE DRAWING PLUS THE SEQUENTIAL NUMBER. V049488-01, 02 ETC.

TAG NO'S: WB-8A, WB-8B

APPROX. WEIGHT: 2068#

PROPRIETARY AND CONFIDENTIAL
THIS DOCUMENT CONTAINS PROPRIETARY INFORMATION BELONGING TO PROCESS SYSTEMS INTERNATIONAL, INC. OR ITS AFFILIATED COMPANIES AND SHALL BE USED ONLY FOR THE PURPOSE FOR WHICH IT WAS SUPPLIED. IT SHALL NOT BE COPIED, REPRODUCED OR OTHERWISE TRANSMITTED IN ANY FORM OR BY ANY MEANS WITHOUT THE WRITTEN CONSENT OF PROCESS SYSTEMS INTERNATIONAL, INC. AND SHALL BE RETURNED UPON REQUEST.

DWG. NO.	DESCRIPTION	DWG. NO.	DESCRIPTION

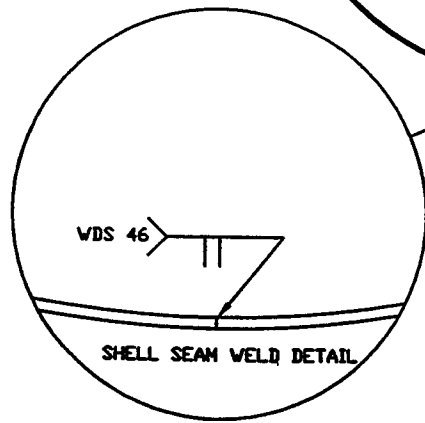
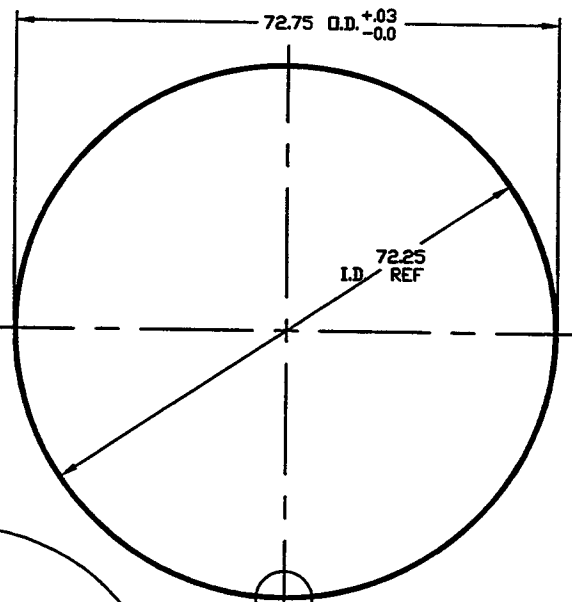
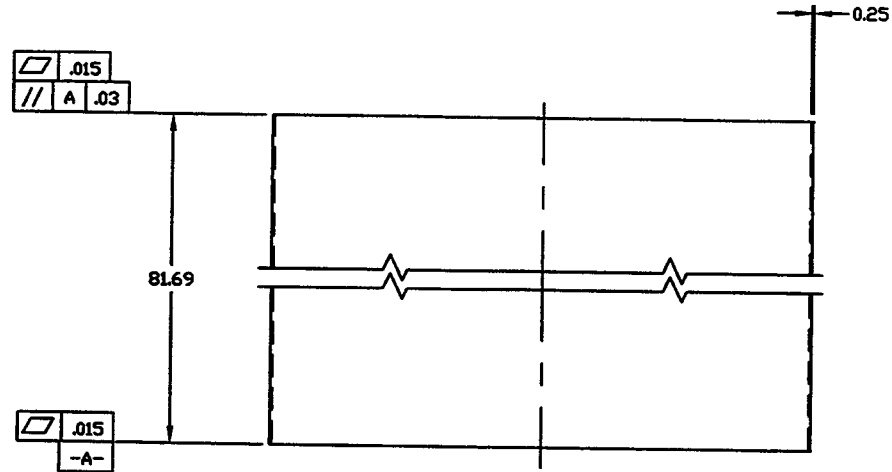
REV	DESCRIPTION	CHKD	BRWN	DATE	RECD
3	REISSUED FOR FAB/SHOPPING AS NOTED			5/15/97	0485
2	DESIGN UPDATE/ISSUED FOR FABRICATION			11/22/96	0190
1	DESIGN UPDATE / FABRICATION (SHELL ONLY)			10/1/96	0283
0	ISSUED FOR PDR			4/29/96	0146
P1	PRELIMINARY			4/18/96	

PROCESS SYSTEMS INTERNATIONAL, INC.
30 WALUP DR. WESTBOROUGH, MASSACHUSETTS 01581 USA

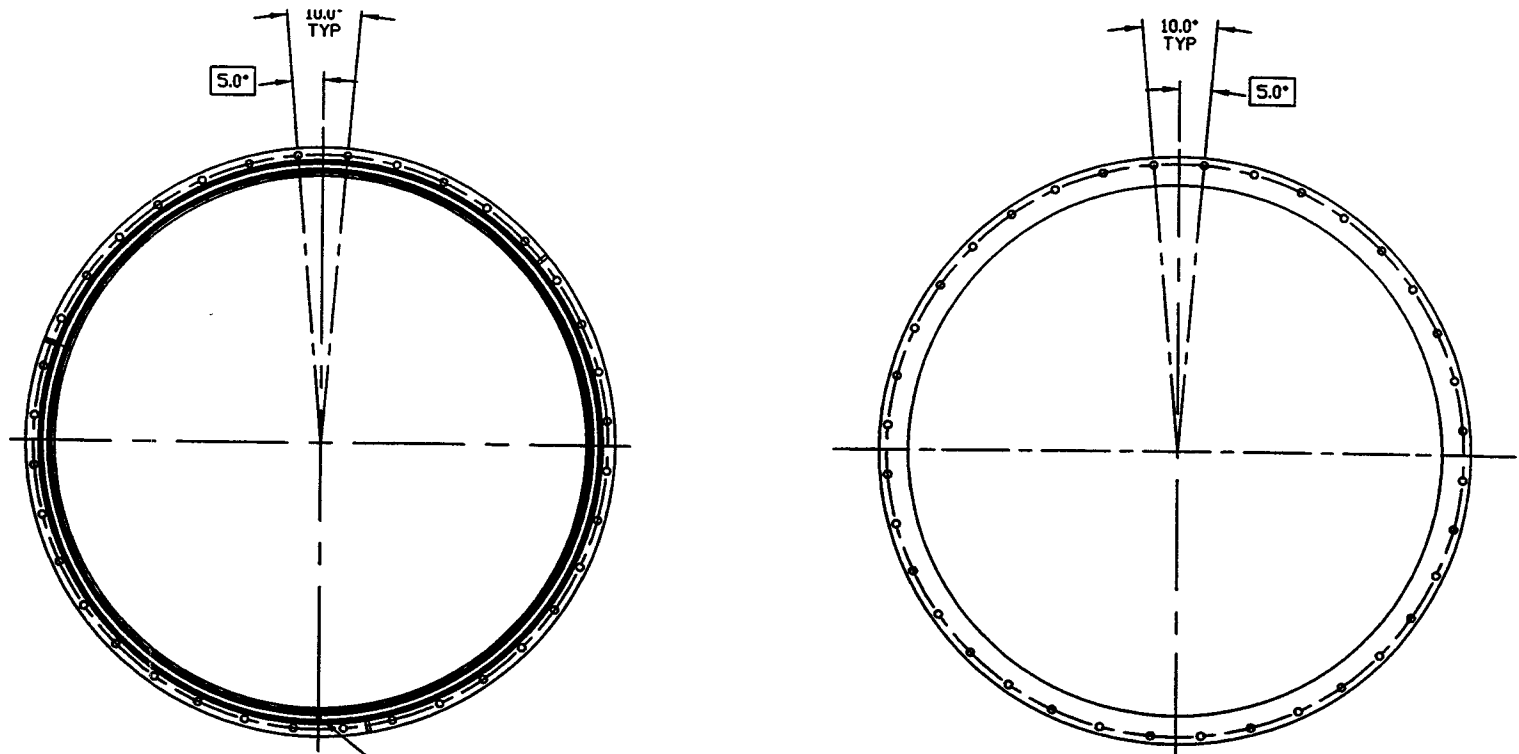
SPOOL B-8
72.25" ID
LIGO VACUUM EQUIPMENT

CAD FILE: V049488/488S1
DWG. NO.: V049-4-B8
SCALE: 1-1/2" = 1"
SHEET: 1 OF 3

LIGO-D961158-03-V



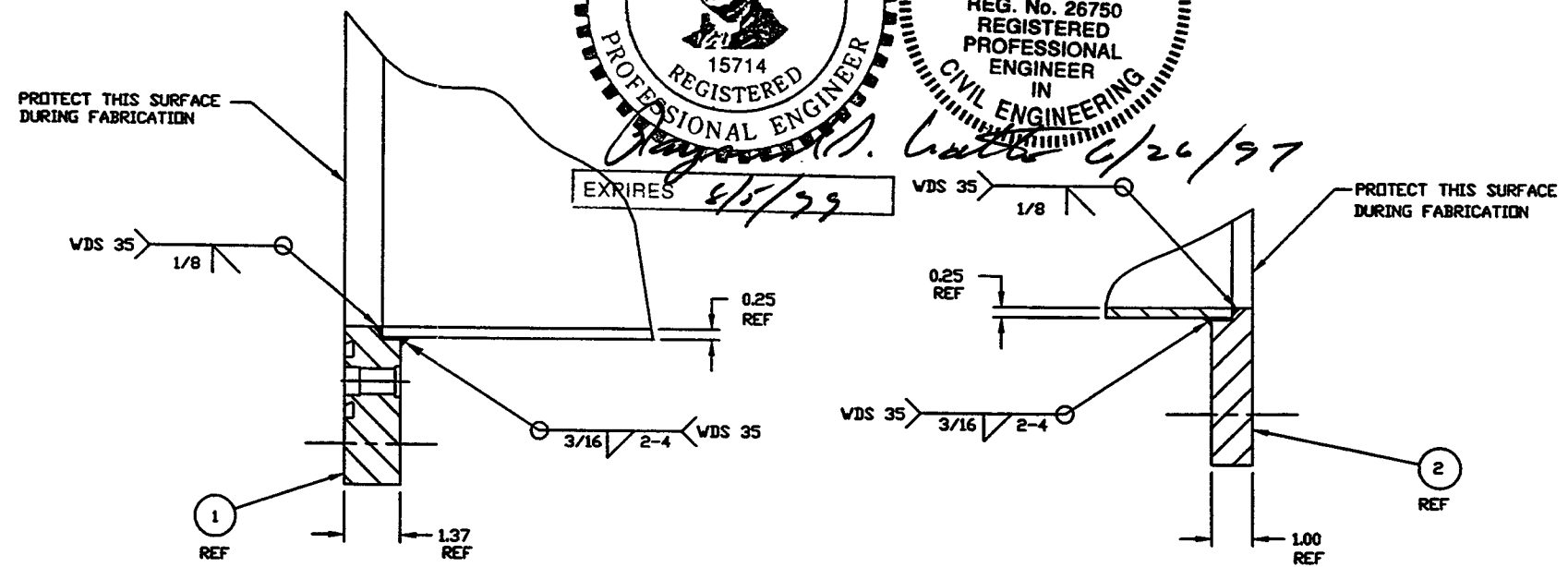
DETAIL '1'
MAKE FROM V049M171-1



11 - 5/8 ANNULUS PIPING PORT ON BOTTOM
SEE NOTE 1

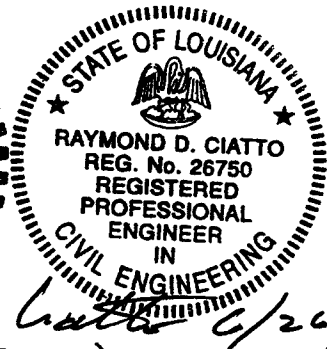
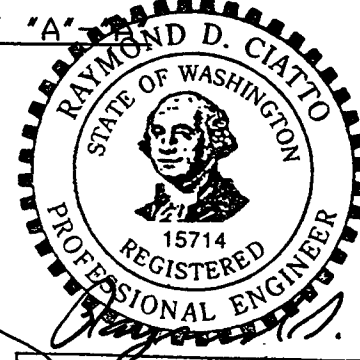
VIEW 'A'

VIEW 'B'-'B''

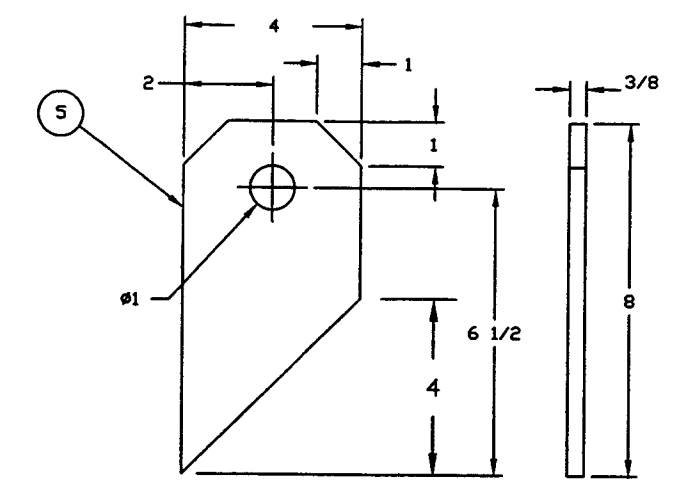
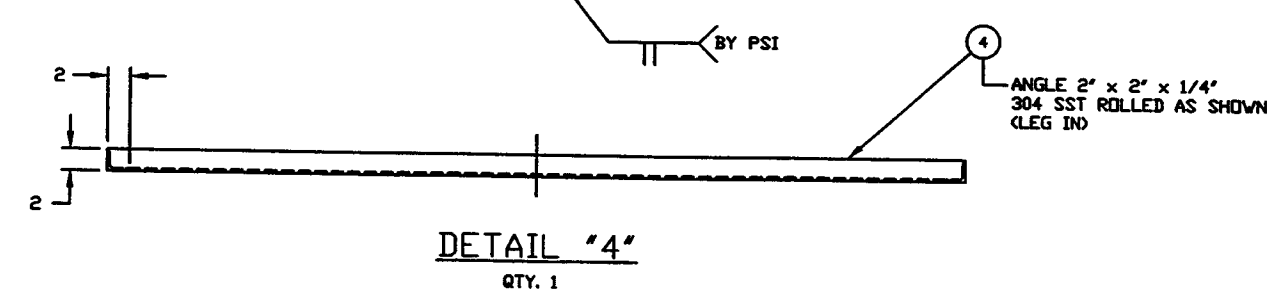
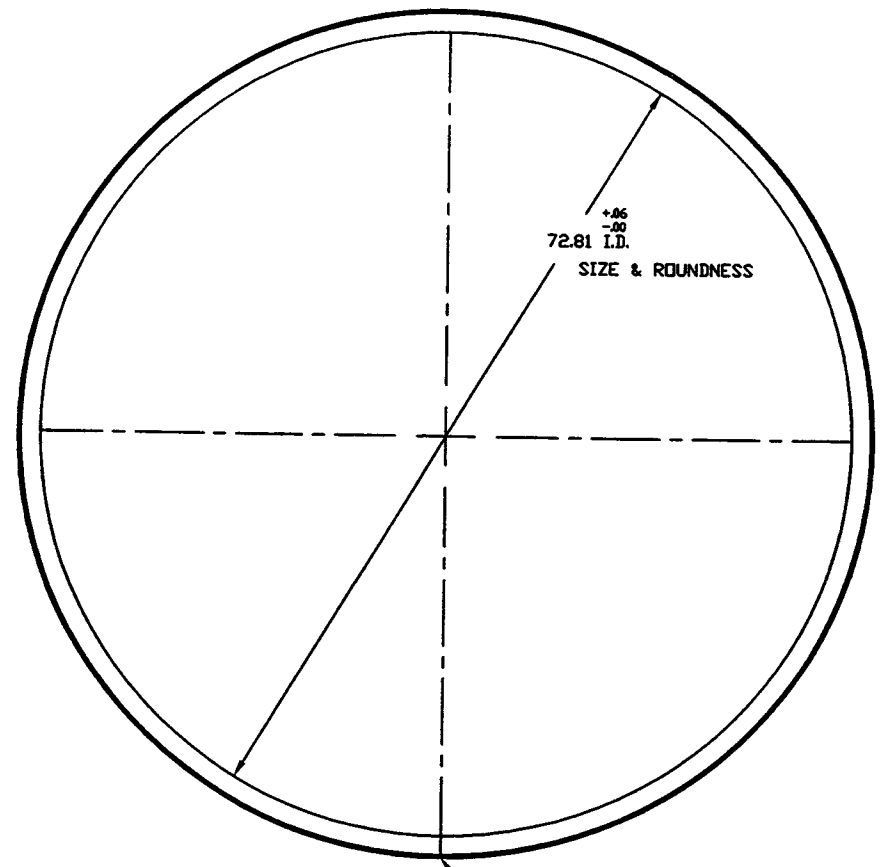


DETAIL '2'

DETAIL '3'



PROCESS SYSTEMS INTERNATIONAL INC. <small>20 WILKIN DR. WESTBOROUGH, MASSACHUSETTS 01581 USA</small>			
SPOOL B-8 72.25" ID LIGD VACUUM EQUIPMENT			
<small>CHG FILE</small> V049488/48982	<small>SIZE</small> D	<small>DWG NO.</small> V049-4-B8	<small>REV.</small> 3
<small>SCALE</small> AS NOTED	<small>SHEET</small> 2 OF 3	<small>REV. 04, 1996 - 002328</small>	



Raymond D. Ciatto 6/24/97

PROCESS SYSTEMS INTERNATIONAL, INC. <small>50 WILSON BLVD. WESTBOROUGH, MASSACHUSETTS 01581 USA</small>			
SPOOL B-8 72.25" ID LIGD VACUUM EQUIPMENT			
CAD FILE V0494B8/4B953	SIZE D	DWG. NO. V049-4-B8	REV. 3
SCALE AS NOTED	SHEET 3 OF 3		<small>Nov 26, 1995 - 0052418</small>