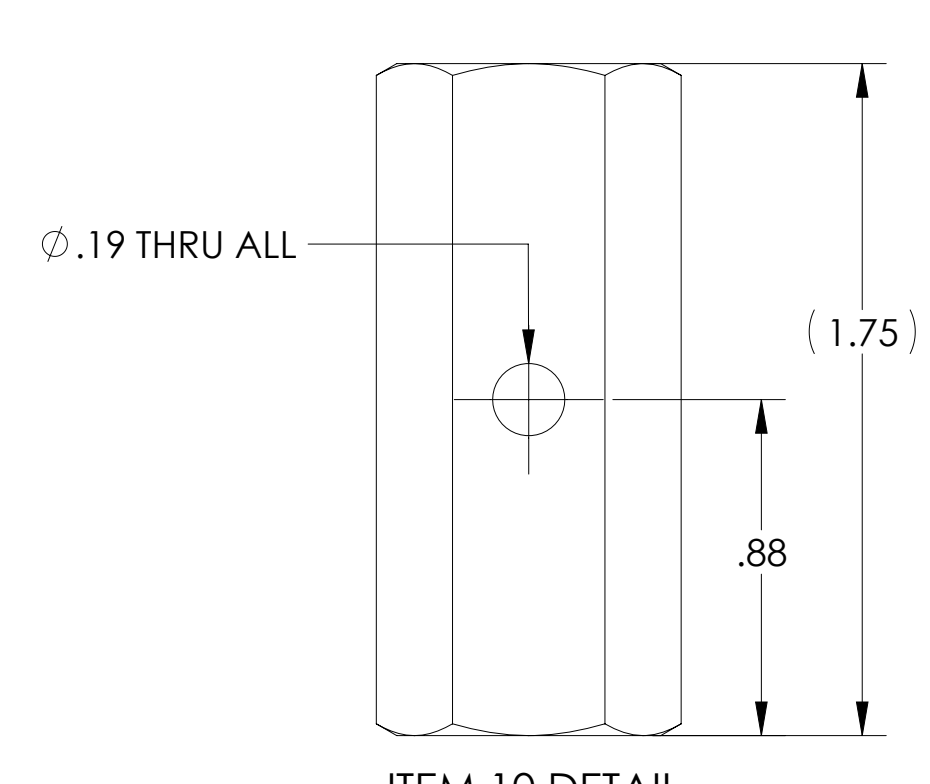
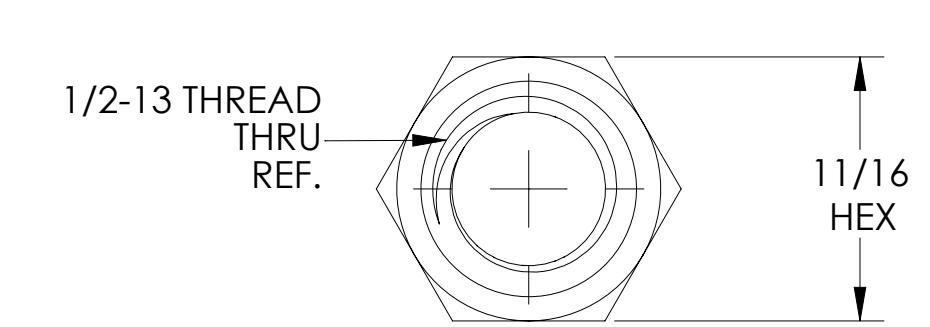
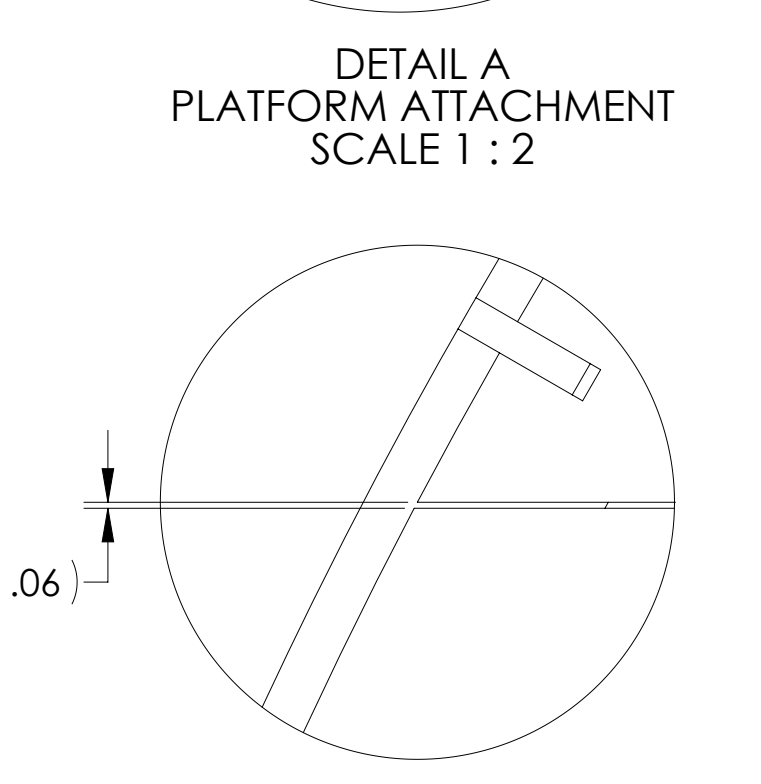
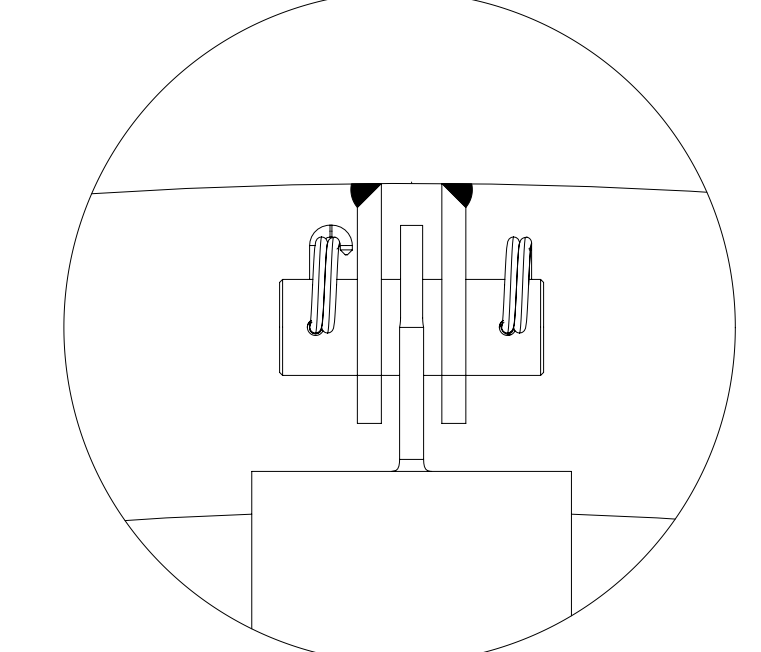
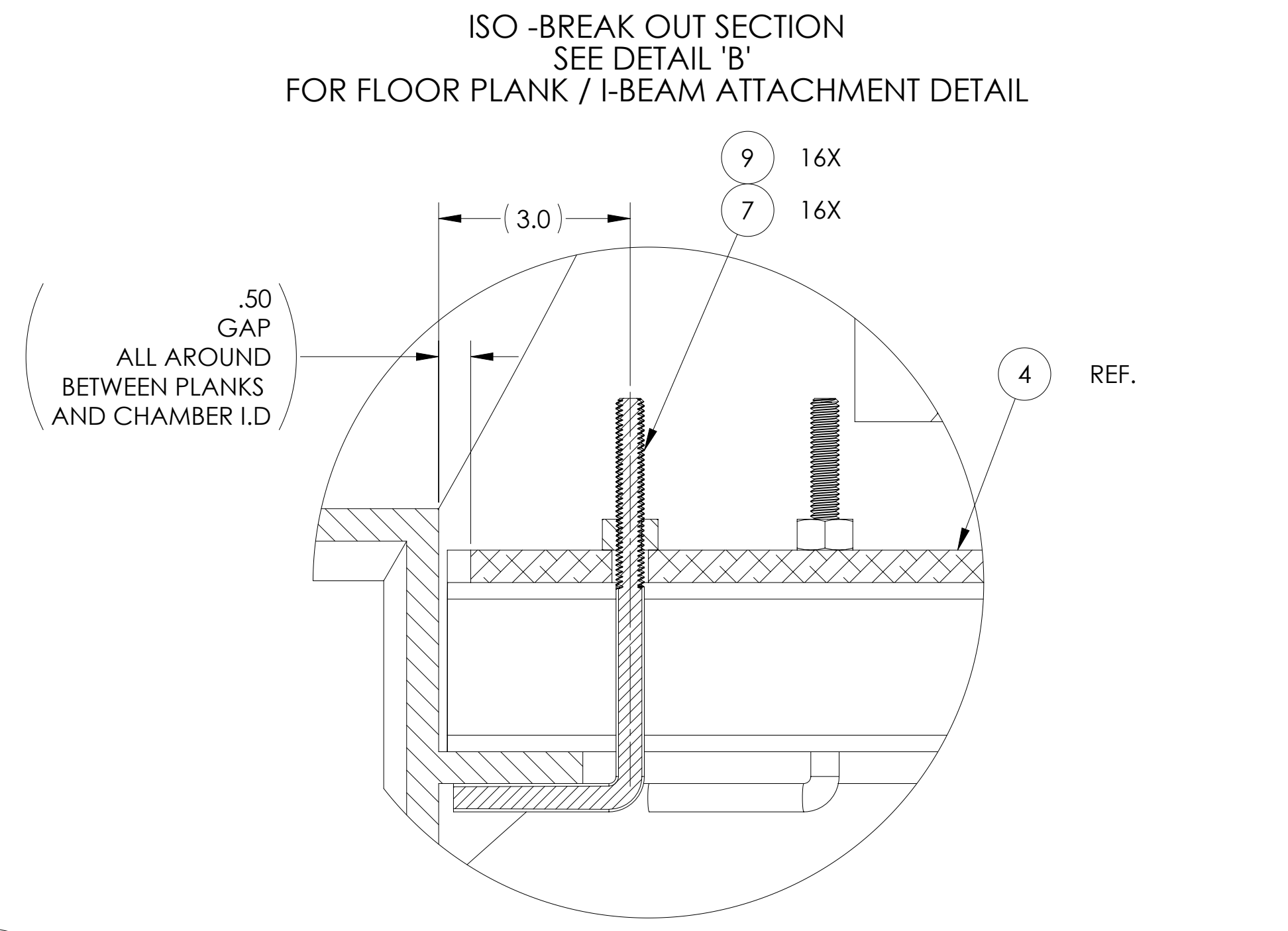
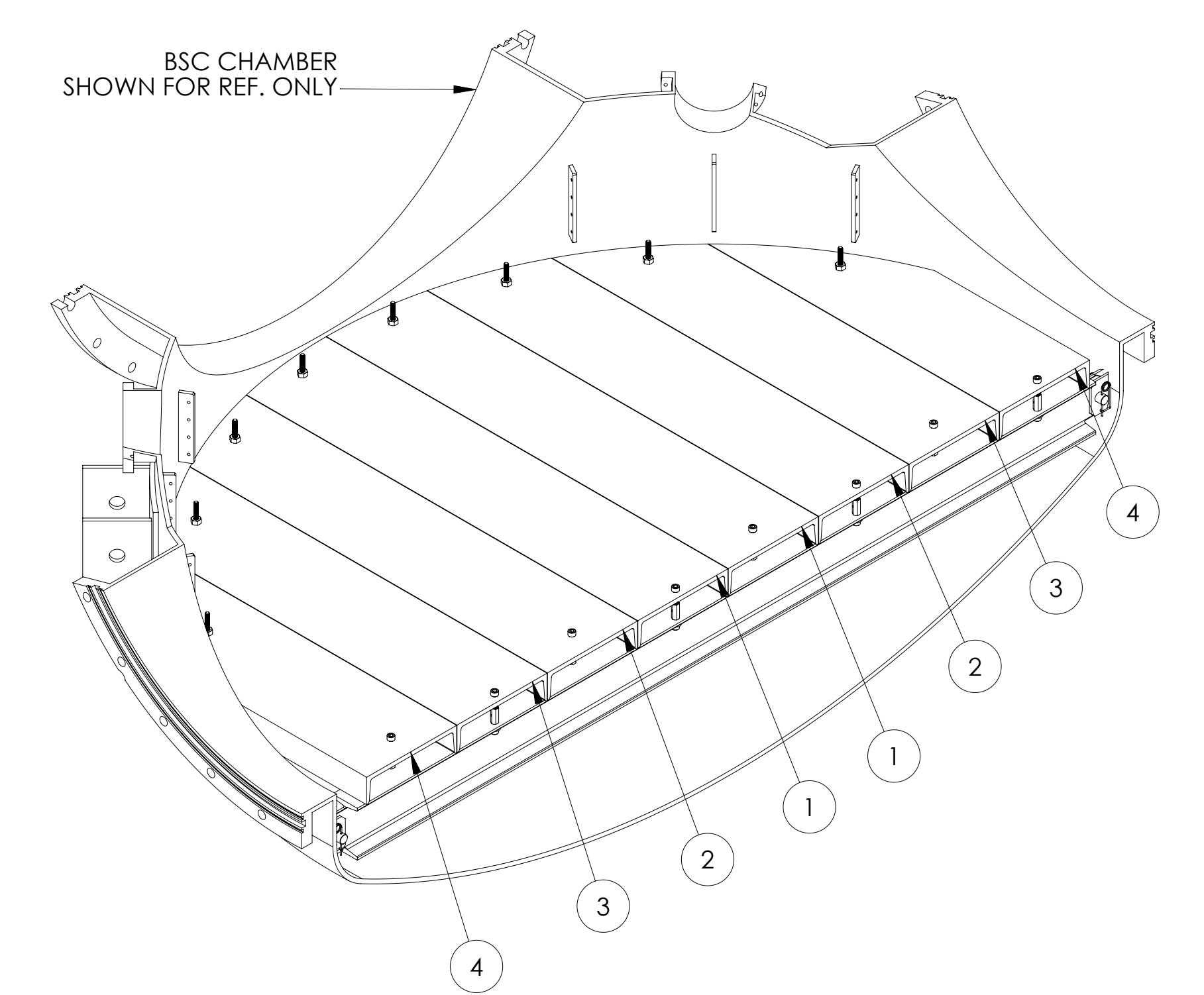
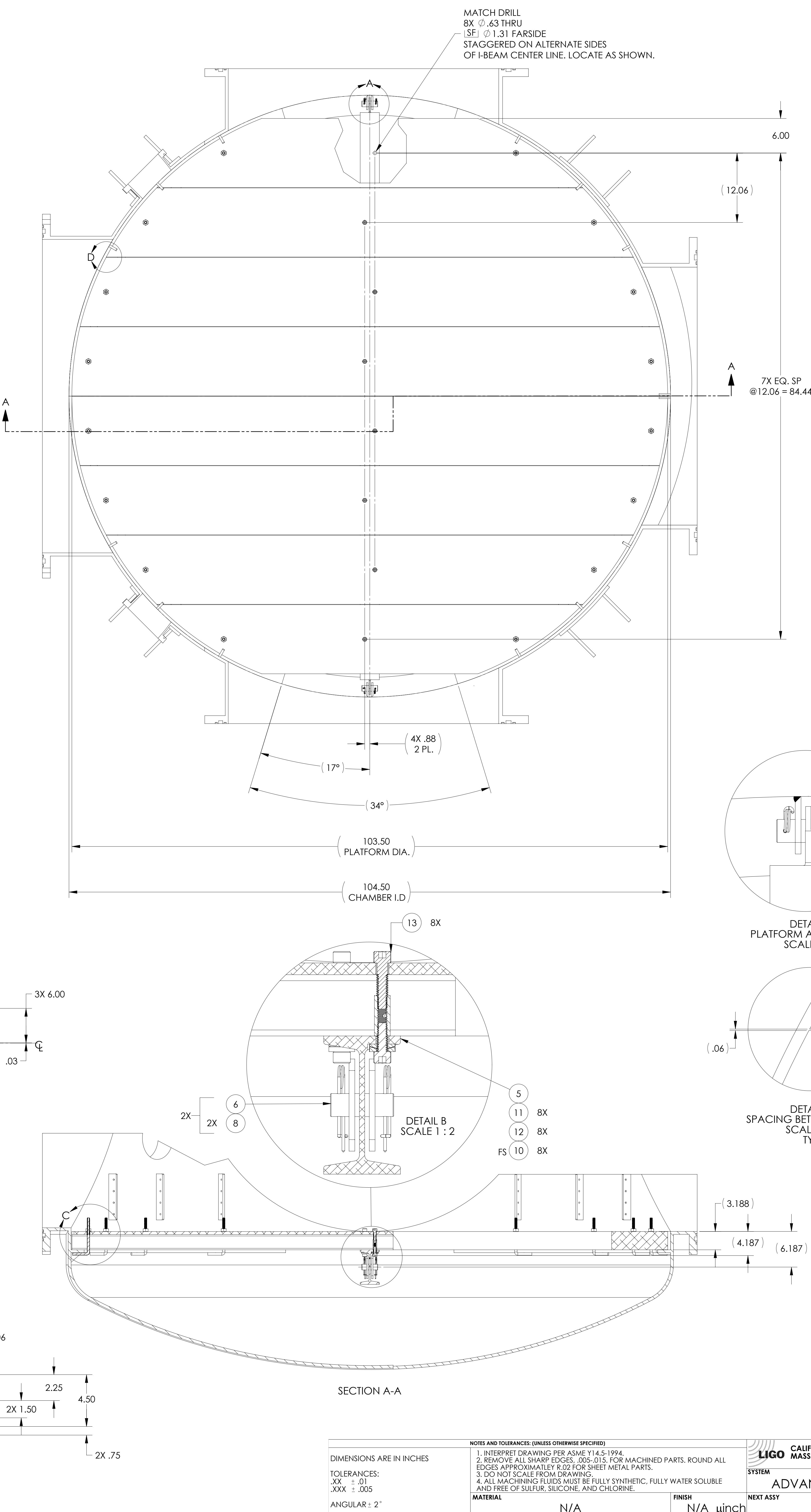
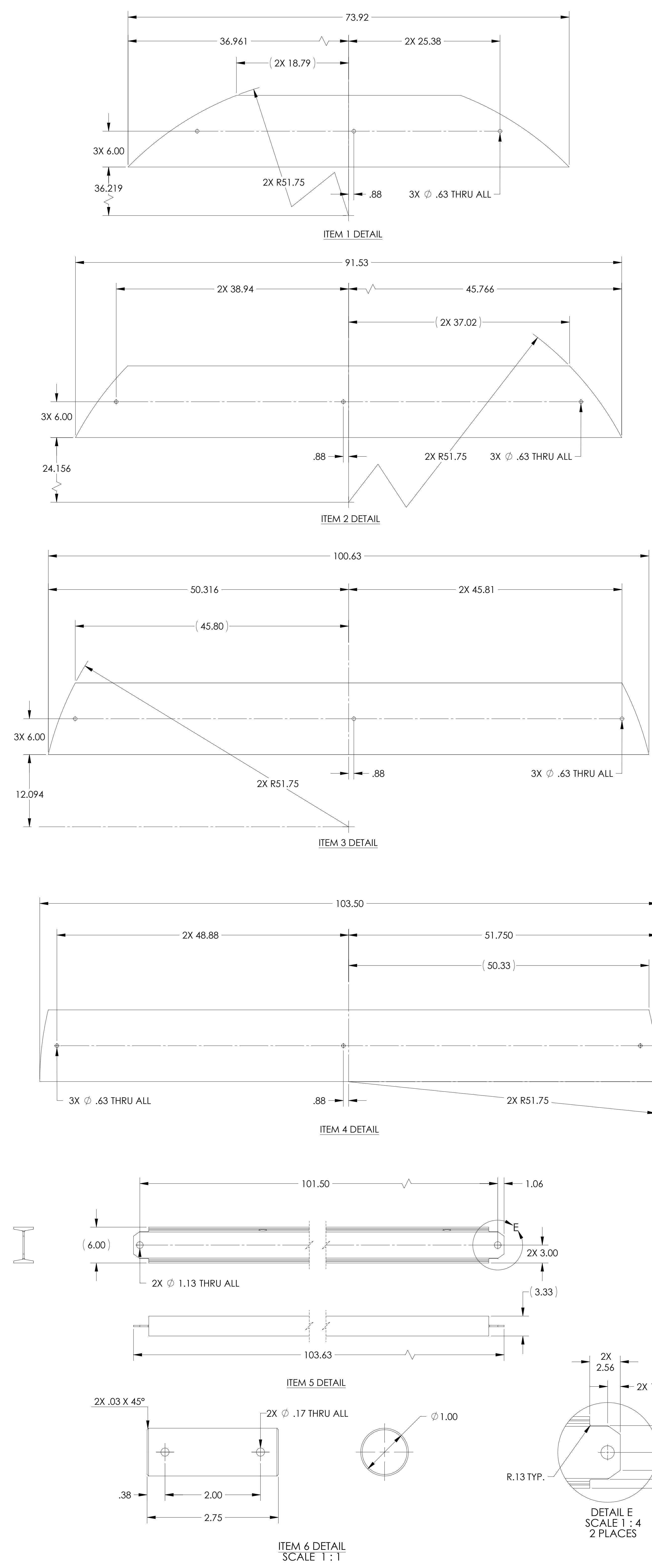


REV.	DATE	DCN #	DRAWING TREE #
v3	03 JUNE 2011	E1100505-x0	-
v4	31 JUL 2012	E1200725-x0	-
-	-	-	-



ITEM NO.	PART NUMBER	DESCRIPTION	MATERIAL	QTY.
13	C-1332-A	SCREW, SHCV, 1/2-13 X 2.0 LG., Ag PLATED	Ag-P 18-8 SSTL	8
12	C-1320-A	SCREW, SHCV, 1/2-13 X 1.25 LG., Ag PLATED	Ag-P 18-8 SSTL	8
11	91944A470	WASHER, SPHERICAL, 1/2 I.D., SELF-ALIGNING	18-8 SSTL	8
10	D96111SP7	COUPLING NUT, 1/2-13 X 1.75 LG.	18-8 SSTL OR McMASTER-CARR P/N:90268A125	8
9	N-5013-A	NUT, HEX, 1/2-13, Ag PLATED	Ag-P 18-8 SSTL	16
8	90026A107 McMASTER-CARR OR EQ.	RETAINING PIN, 1/8 WIRE DIA., X 3.75 LG X 2.0 USABLE LG. (COILED)	18-8 SSTL	4
7	V049M147 3	L-HOOK, 1/2-13 X 6.50 LG. (CUSTOM)	304 SSTL	16
6	D96111SP6	PIN, 1" DIA. X 2.75 LG.	6061-T6 (SS)	2
5	D96111SP5	I-BEAM, SUPPORT, BSC FLOORING	6061-T6 (SS)	1
4	D96111SP4	PLANK, BSC FLOORING ASSY, P4	6061-T6, C12 X 10.37	2
3	D96111SP3	PLANK, BSC FLOORING ASSY, P3	6061-T6, C12 X 10.37	2
2	D96111SP2	PLANK, BSC FLOORING ASSY, P2	6061-T6, C12 X 10.37	2
1	D96111SP1	PLANK, BSC FLOORING ASSY, P1	6061-T6, C12 X 10.37	2

NOTES AND TOLERANCES: (UNLESS OTHERWISE SPECIFIED)
 1. INTERPRET DRAWING PER ASME Y14.5-1994
 2. REMOVE ALL SHARP EDGES, .005-.015, FOR MACHINED PARTS. ROUND ALL EDGES APPROXIMATELY R.02 FOR SHEET METAL PARTS.
 3. DO NOT SCALE FROM DRAWING.
 4. ALL MACHINING FLUIDS MUST BE FULLY SYNTHETIC, FULLY WATER SOLUBLE AND FREE OF SULFUR, SILICONE, AND CHLORINE.

DIMENSIONS ARE IN INCHES
 TOLERANCES:
 .XX ± .01
 .XXX ± .005
 ANGULAR: 2°

MATERIAL: N/A
 FINISH: N/A μinch
 NEXT ASSY: MULTIPLE

CALIFORNIA INSTITUTE OF TECHNOLOGY
 MASSACHUSETTS INSTITUTE OF TECHNOLOGY
 ADVANCED LIGO
 SUB-SYSTEM: SUS

PART NAME: ALIGO, BSC FLOOR ASSY. & DETAILS, BEAM SPLITTER CHAMBER, LIGO VACUUM EQUIPMENT
 DESIGNER: PV
 DRAFTER: PV
 CHECKER: SEE DCC
 APPROVAL: SEE DCC

DATE: 03 MARCH 1994
 DATE: 03 MARCH 1994
 DATE: SEE DCC
 DATE: SEE DCC

SIZE: DWG. NO. E
 SCALE: 1:8
 PROJECTION: 1st Angle

REV. D961115
 v4

SHEET 1 OF 1