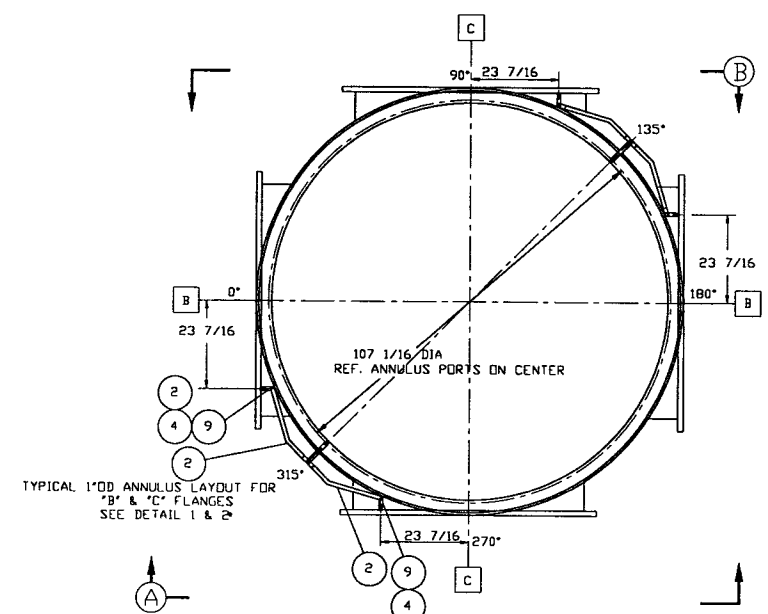
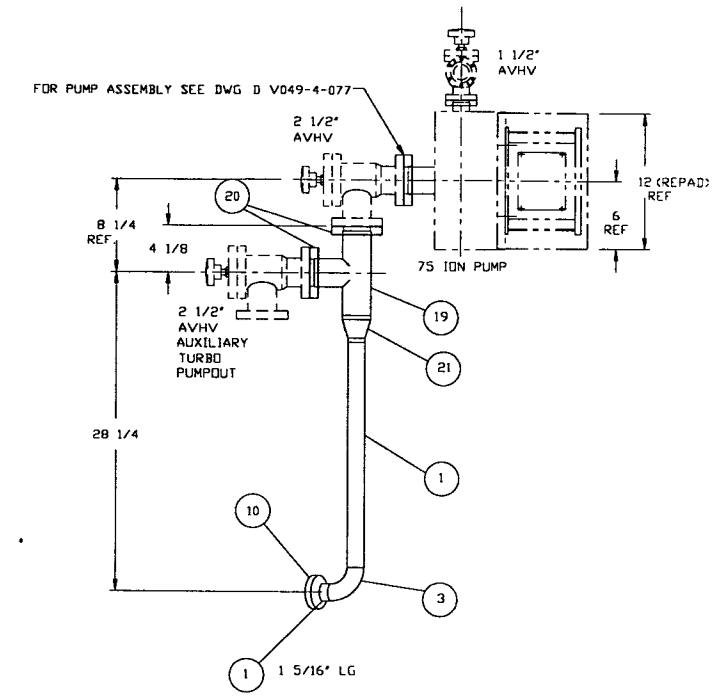


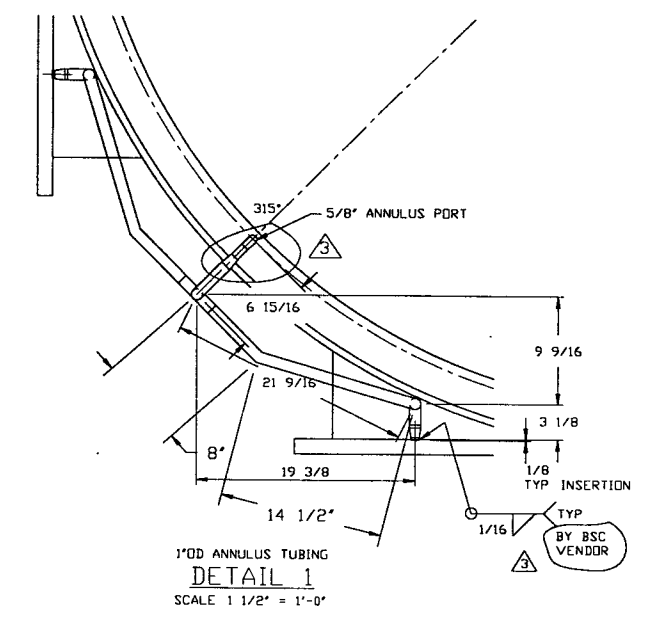
PLAN-75 ION PUMP ASSEMBLY @ CHAMBER FLANGES  
SCALE: 1/2" = 1'-0"



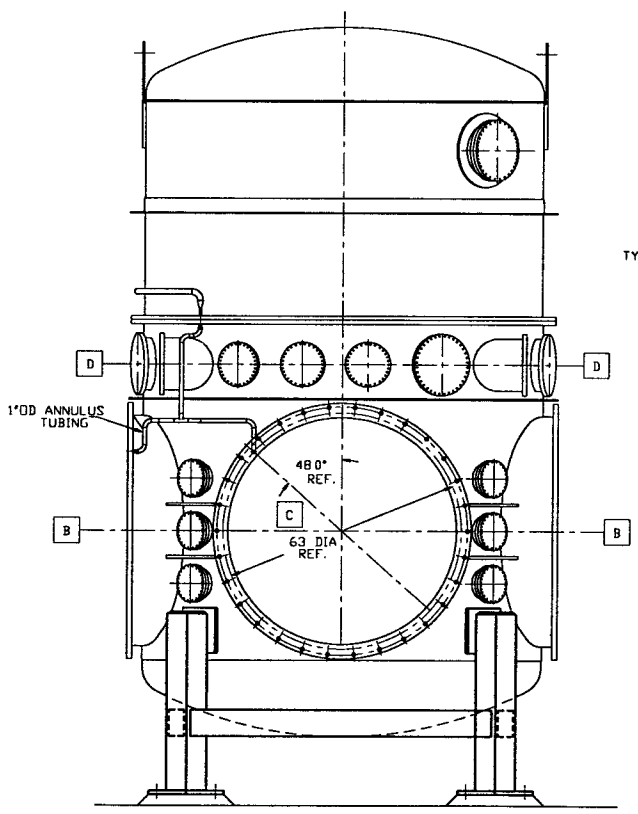
PLAN-ANNULUS PIPING ASSEMBLY FOR 60 1/2" FLANGES  
SCALE 1/2" = 1'-0"



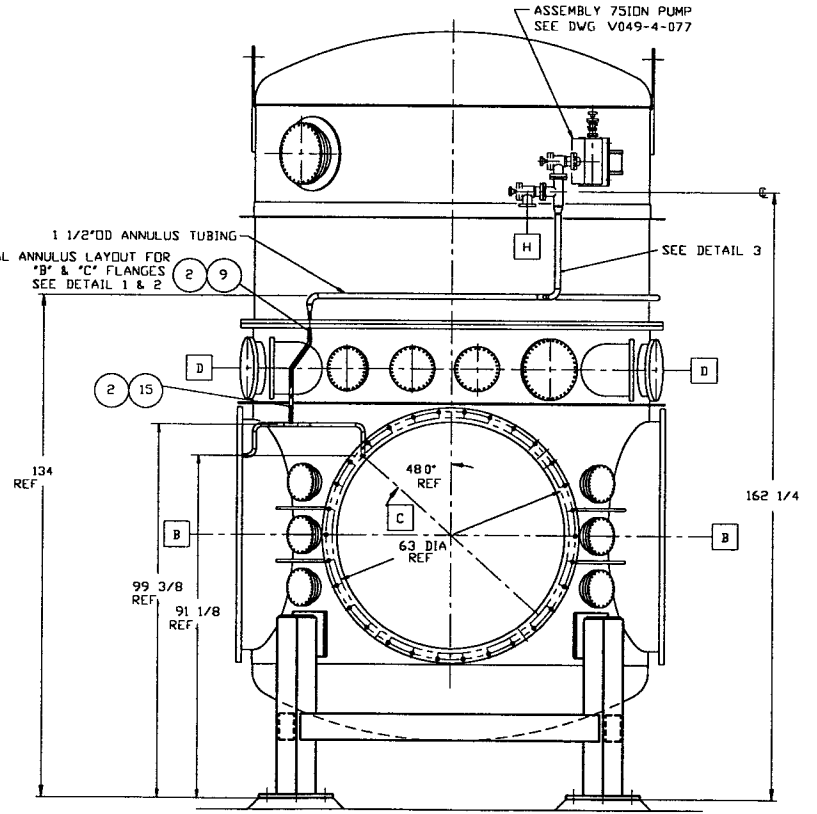
DETAIL 3  
SCALE 1 1/2" = 1'-0"



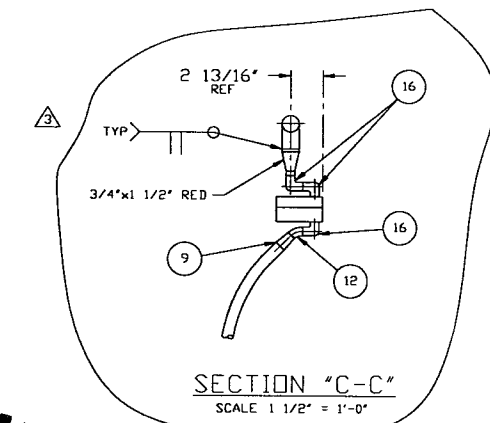
DETAIL 1  
SCALE 1 1/2" = 1'-0"



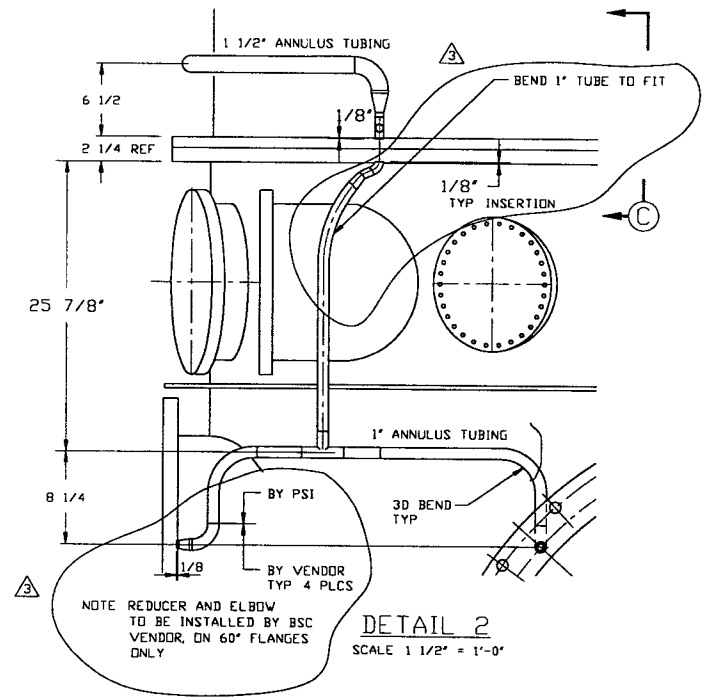
SECTION A-A  
SCALE: 1/2" = 1'-0"



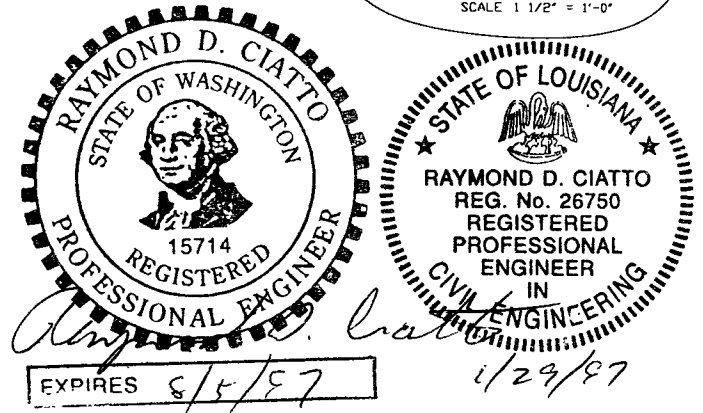
SECTION B-B  
SCALE 1/2" = 1'-0"



SECTION "C-C"  
SCALE 1 1/2" = 1'-0"



DETAIL 2  
SCALE 1 1/2" = 1'-0"



0961108-03-V

<p>UNLESS OTHERWISE SPECIFIED DIMENSIONS ARE IN INCHES</p> <p>TOLERANCES:</p> <p>FRACTIONAL ± .1</p> <p>ANGULAR HATCH 15°-30° BEND 12°</p> <p>TWO PLACE DECIMAL ± .03</p> <p>THREE PLACE DECIMAL ± .015</p> <p>FINISHED SURFACE RMS</p> <p>BREAK CORNERS IN OUT</p> <p>REMOVE ALL BURRS</p>		<p>3 REISSUED FOR FABRICATION</p> <p>2 ISSUED FOR FABRICATION</p> <p>1 DESIGN UPDATE</p> <p>0 ISSUED FOR FDR</p>		<p>DO NOT SCALE THIS DRAWING</p> <p>USED ON</p> <p>NEXT ASS'Y. D V049-4-101</p>		<p>REV DESCRIPTION</p>		<p>ISSUE DESCRIPTION</p>		<p>SCALE AS NOTED</p>			
D V049-4-122	BSC-75 ION PUMP SUPPORT	D V049-4-077	BSC-75 I/S ION PUMP	3	REISSUED FOR FABRICATION	GS	PEF	REB	RDC	REC	PV	1/28/97	0421
				2	ISSUED FOR FABRICATION						PV	10/28/96	0222
				1	DESIGN UPDATE						GW	6/21/96	0212
				0	ISSUED FOR FDR						GW	2/9/96	0150
DWG NO	DESCRIPTION	DWG NO	DESCRIPTION	REV	DESCRIPTION	CHKD	DRWN	DATE	DEDR				

PROCESS SYSTEMS INTERNATIONAL INC.  
20 WALKUP DR WESTBOROUGH, MASSACHUSETTS 01581 USA

BSC-ANNULUS TUBING ASSEMBLY

LIGO VACUUM EQUIPMENT

CAD FILE V0494025 SIZE D DWG NO V049-4-025 REV 3

SHEET 1 OF 1

Jan 29, 1997 - 09:57:52