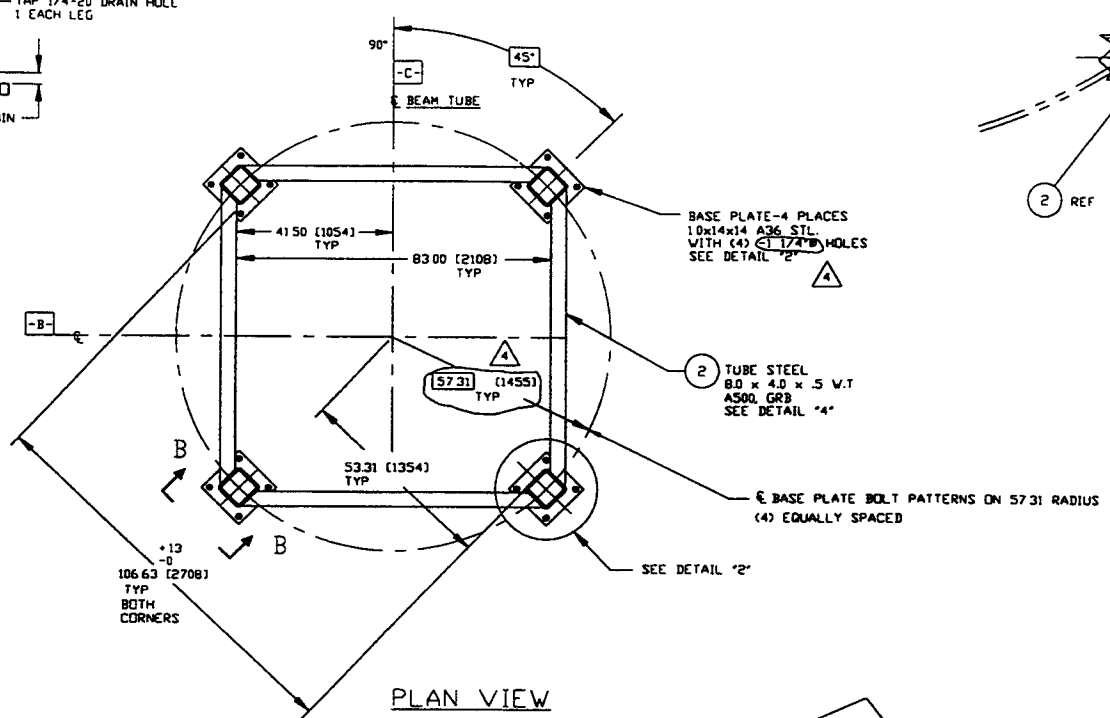
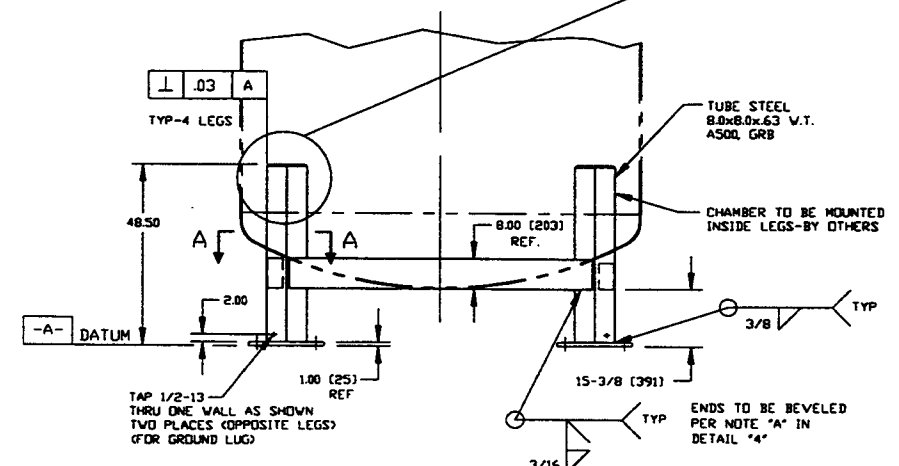


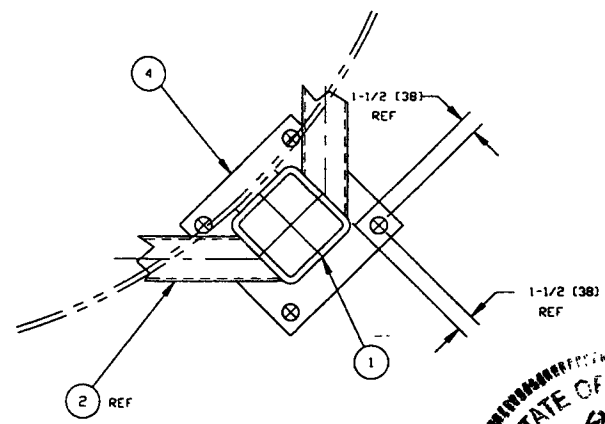
VIEW B-B  
SCALE 1/2"=1'-0"  
4 PLACES



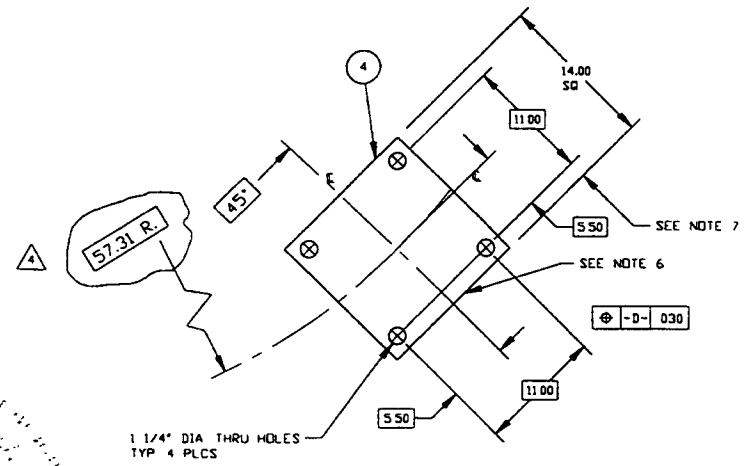
PLAN VIEW



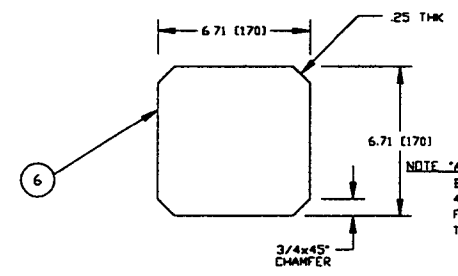
ELEVATION VIEW  
SCALE: 1/2"=1'-0"



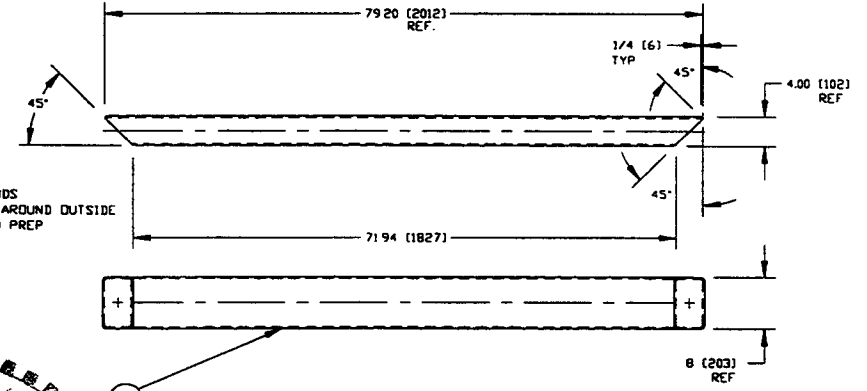
SECTION "A-A"  
SCALE 1/2"=1'-0"  
4 PLACES



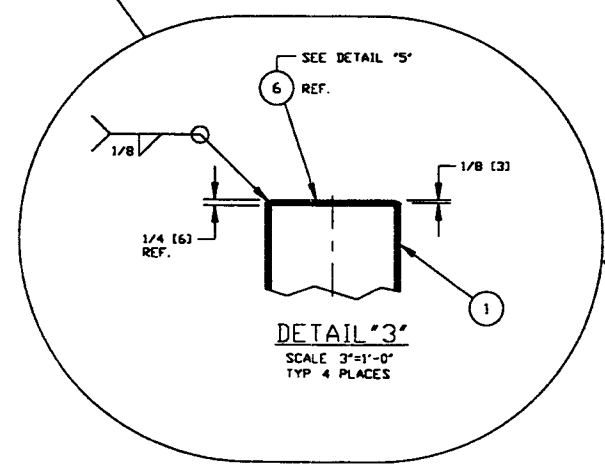
DETAIL "2"  
SCALE 1/2"=1'-0"  
QTY (4)



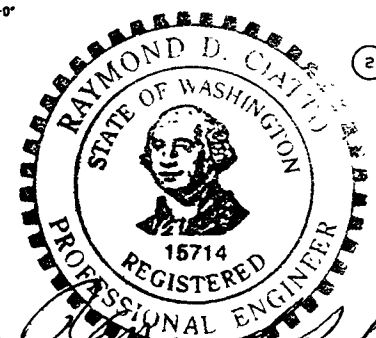
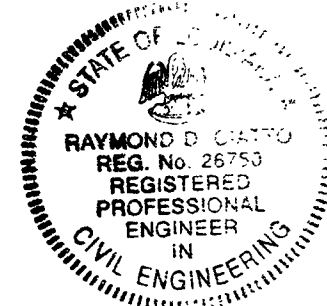
DETAIL "5"  
SCALE: 3"=1'-0"  
QTY (4)



DETAIL "4"  
SCALE 1"=1'-0"  
QTY. (4)



DETAIL "3"  
SCALE 3"=1'-0"  
TYP 4 PLACES



*Raymond D. Ciatto*  
EXPIRES 8/5/97 11/2/97

- NOTE
- 1) FABRICATION AND PAINTING TO BE IN ACCORDANCE WITH SPEC V049-2-139
  - 2) BASE PLATES TO BE ASSEMBLED ON A FIXTURE WHICH INSURES THAT COMPLETED ASSEMBLIES ARE INTERCHANGEABLE ON BOLT HOLE LOCATIONS THE ASSEMBLY IS TO BE SYMMETRICAL ABOUT THE "B" & "C" CENTERLINES AND SUCH THAT THE ASSEMBLY CAN BE ROTATED IN 90° INCREMENTS, AND STILL LINE UP WITH THE HOLE CENTERS IN THE TEMPLATE WITHIN ± 1/16"
  - 3) DC HOLD POINT AFTER BEVELING OF ITEM 2 MEMBERS
  - 4) WELD PROCEDURES TO BE APPROVED BY PSI
  - 5) FABRICATION TO BE IN ACCORDANCE WITH AISC & AWS D11 PROCEDURES.
  - 6) SHEARED EDGE IS NOT PERMITTED.
  - 7) MINIMUM EDGE DIST IS 1 1/2" FROM HOLE CENTER TO EDGE OF PLATE

<p>PROPRIETARY AND CONFIDENTIAL</p> <p>THIS DOCUMENT CONTAINS PROPRIETARY INFORMATION BELONGING TO PROCESS SYSTEMS INTERNATIONAL, INC. OR ITS AFFILIATED COMPANIES AND SHALL BE USED ONLY FOR THE PURPOSE FOR WHICH IT WAS SUPPLIED. IT SHALL NOT BE COPIED, REPRODUCED OR OTHERWISE USED, NOR SHALL SUCH INFORMATION BE FURNISHED IN WHOLE OR IN PART TO OTHERS EXCEPT IN ACCORDANCE WITH THE TERMS OF ANY AGREEMENT UNDER WHICH IT WAS SUPPLIED OR WITH THE PRIOR WRITTEN CONSENT OF PROCESS SYSTEMS INTERNATIONAL, INC. AND SHALL BE RETURNED UPON REQUEST.</p>		<p>UNLESS OTHERWISE SPECIFIED DIMENSIONS ARE IN INCHES</p> <p>TOLERANCES - FRACTIONAL ± .1 ANGULAR ± .01 HOLE ± .01 TWO PLACE DECIMAL ± .02 THREE PLACE DECIMAL ± .015 FINISHED SURFACE AND BEVEL CORNERS TO REMOVE ALL BURRS</p>		<p>DO NOT SCALE THIS DRAWING</p> <p>USED IN: _____</p> <p>NEXT ASS'Y: _____</p>		<p>4 REISSUED FOR FABRICATION</p> <p>3 RELEASED FOR FABRICATION</p> <p>2 DESIGN UPDATE</p> <p>1 RE-ISSUED FOR FDR</p> <p>0 ISSUED FOR FDR</p>		<p>REV DESCRIPTION</p> <p>4 RALD/WRTZ PV 11/20/96 0354</p> <p>3 PEF DMCV REC PV 8/23/96 0242</p> <p>2 MA 5/17/96 0187</p> <p>1 DMCV REC MA 5/06/96 0150</p> <p>0 PV 4/23/96 0121</p>		<p>PROCESS SYSTEMS INTERNATIONAL, INC.</p> <p>20 WALKUP DR. WESTBOROUGH, MASSACHUSETTS 01581 USA</p> <p>CHAMBER SUPPORT ASSEMBLY BSC LIGO VACUUM EQUIPMENT</p>		<p>SCALE 1/2"=1'-0"</p> <p>SHEET 1 OF 1</p>	
DWG. NO.	DESCRIPTION	DWG. NO.	DESCRIPTION	REV	DATE	CHKD	DRWN	DATE	DESN	SCALE	SHEET		
V049-4-001	BEAM SPLITTER CHAMBER (BSC)									1/2"=1'-0"	1 OF 1		