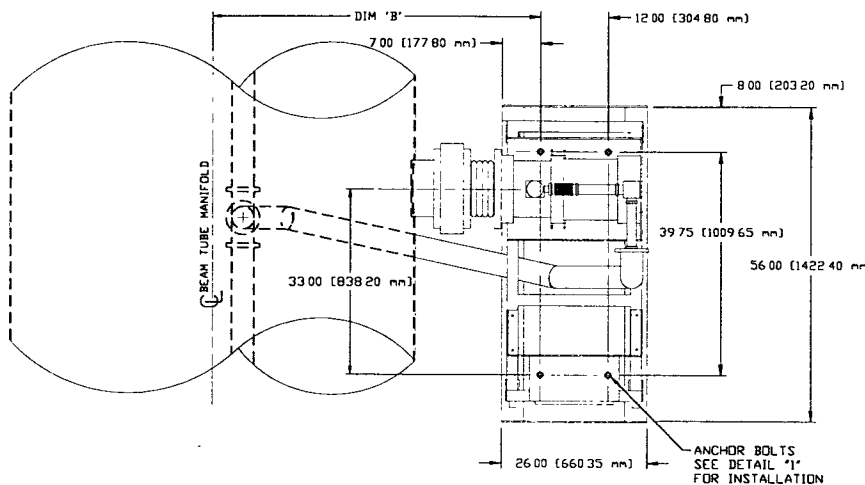
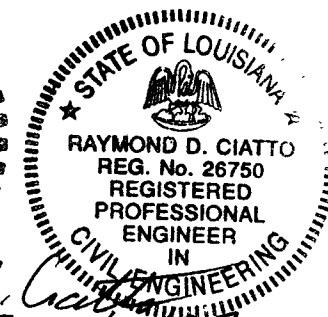


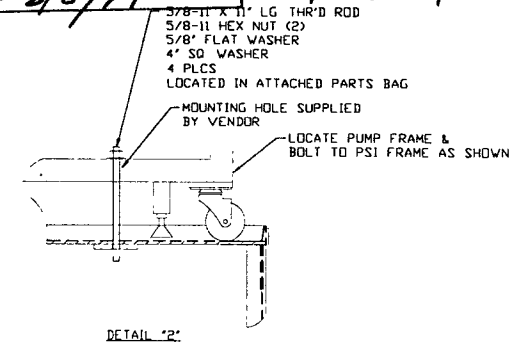
ELEVATION VIEW



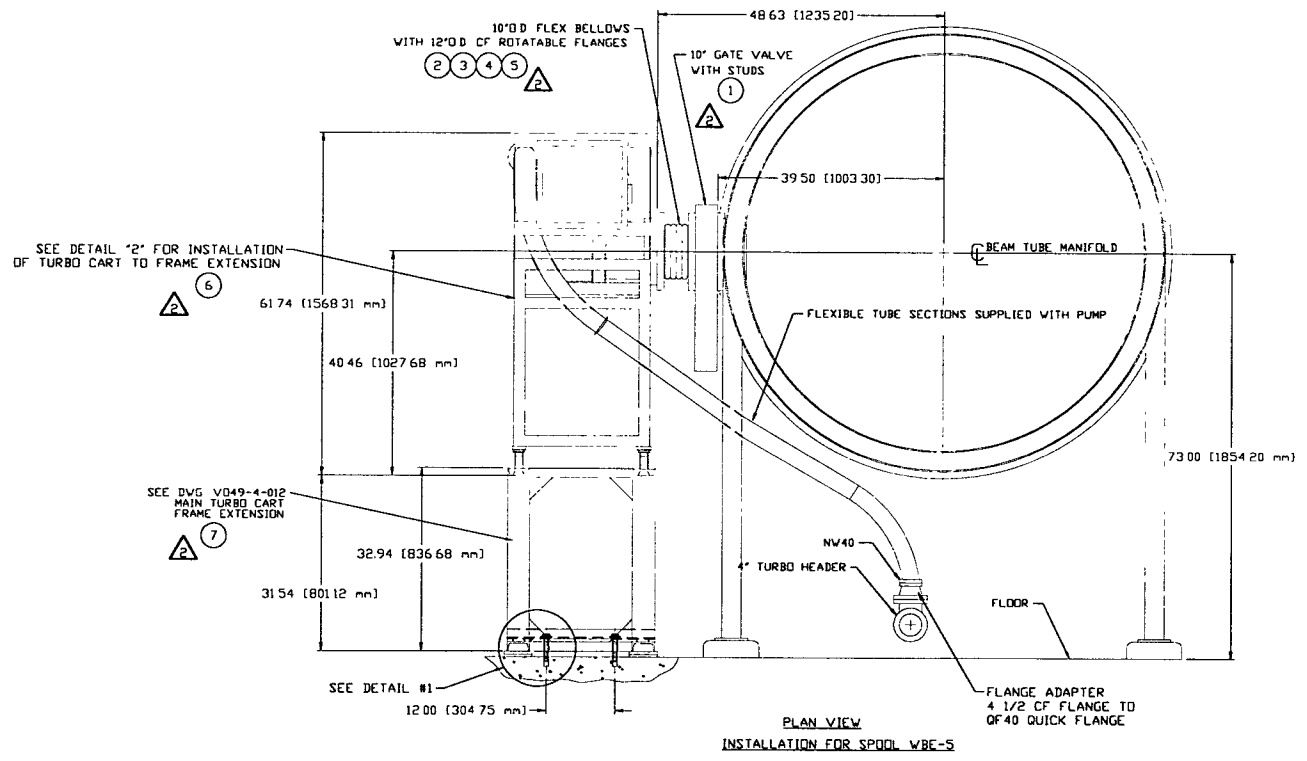
ELEVATION VIEW



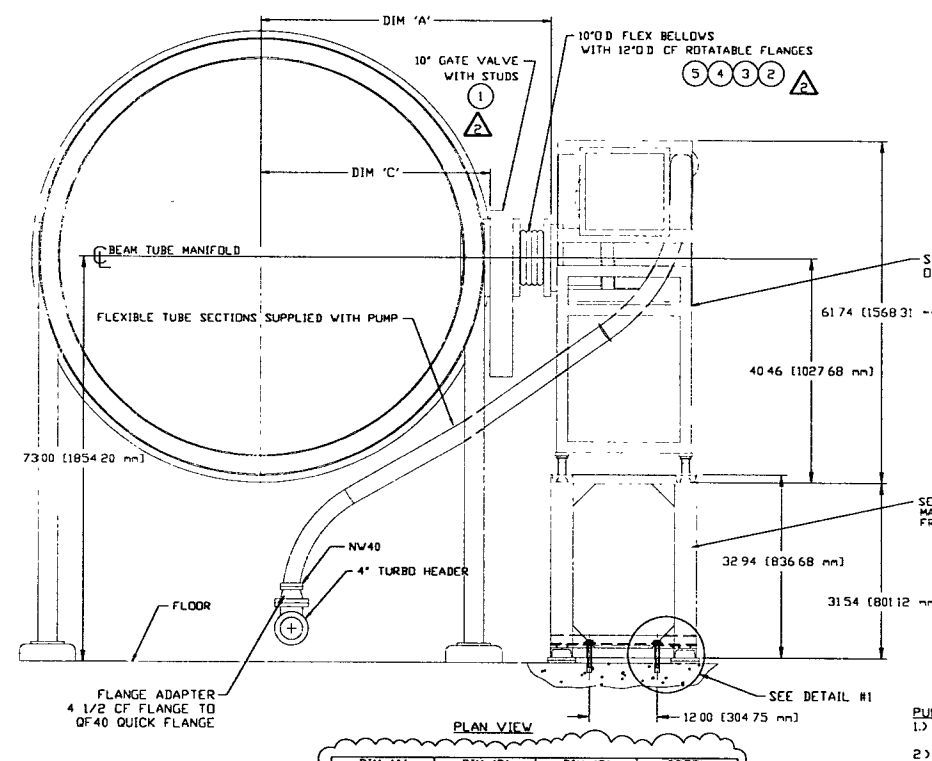
EXPIRES 2/21/97



DETAIL "2"



PLAN VIEW
INSTALLATION FOR SPOOL VBE-5

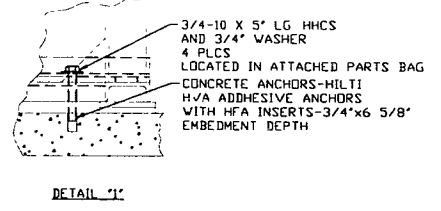


PLAN VIEW

| DIM "A" | DIM "B" | DIM "C" | SPOOL |
|-------------------------|-------------------------|------------------------|----------------------------|
| 48.625" (1235.08 MM) | 55.625" (1412.88 MM) | 39.50" (1003.30 MM) | VBE-6 |
| 49.75" | 56.75" | 40.60" | VA-7A,VA-7B VA-7C,VA-7D |
| 126.365 MM | 1144.45 MM | 1031.24 MM | VB-5A |
| 28.625" | 35.625" | 19.48" | VB-7 |
| 727.08 MM | 904.88 MM | 494.67 MM | |
| 36.65" | 43.65" | 27.50" | |
| 930.91 MM | 1109.71 MM | 698.50 MM | |

NOTE: ITEMS ON THIS SHEET ARE SHOWN ON BOM #V0494011G1

- PUMP CART INSTALLATION:
- 1) MOUNT BASE FRAME TO FLOOR USING 30 FT-LB OF TORQUE ON 3/4" DIA BOLTS INSERTED INTO CONCRETE ANCHORS EMBEDDED IN THE FLOOR
 - 2) LIFT TURBO PUMP CART INTO POSITION, LEVEL AND ALIGN PUMP CART NOZZLE WITH VALVE ON THE BEAM TUBE MANIFOLD (NOTE DO NOT DISCONNECT CART FROM CRANE RIGGING UNTIL CART WEIGHT IS RESTING FIRMLY ON THE LEVELING LEGS) CART LEVELING LEGS ARE TO BE ADJUSTED UNTILL WHEELS ARE CLEAR FROM RESTING ON THE BASE FRAME
 - 3) BOLT PUMP CART INLET FLEXIBLE CONNECTOR TO FLANGE FACE ON VALVE LOCATED ON BEAM TUBE MANIFOLD
 - 4) BOLT PUMP CART BASE TO BASE FRAME EXTENSION USING 5/8" DIA RODS
 - 5) CONNECT FLEXIBLE HOSE BETWEEN TURBO PUMP DISCHARGE AND STUB CONNECTION ON TURBO HEADER
 - 6) SEE VACUUM PUMP FIELD INSTALLATION PROCEDURE V049-2-175

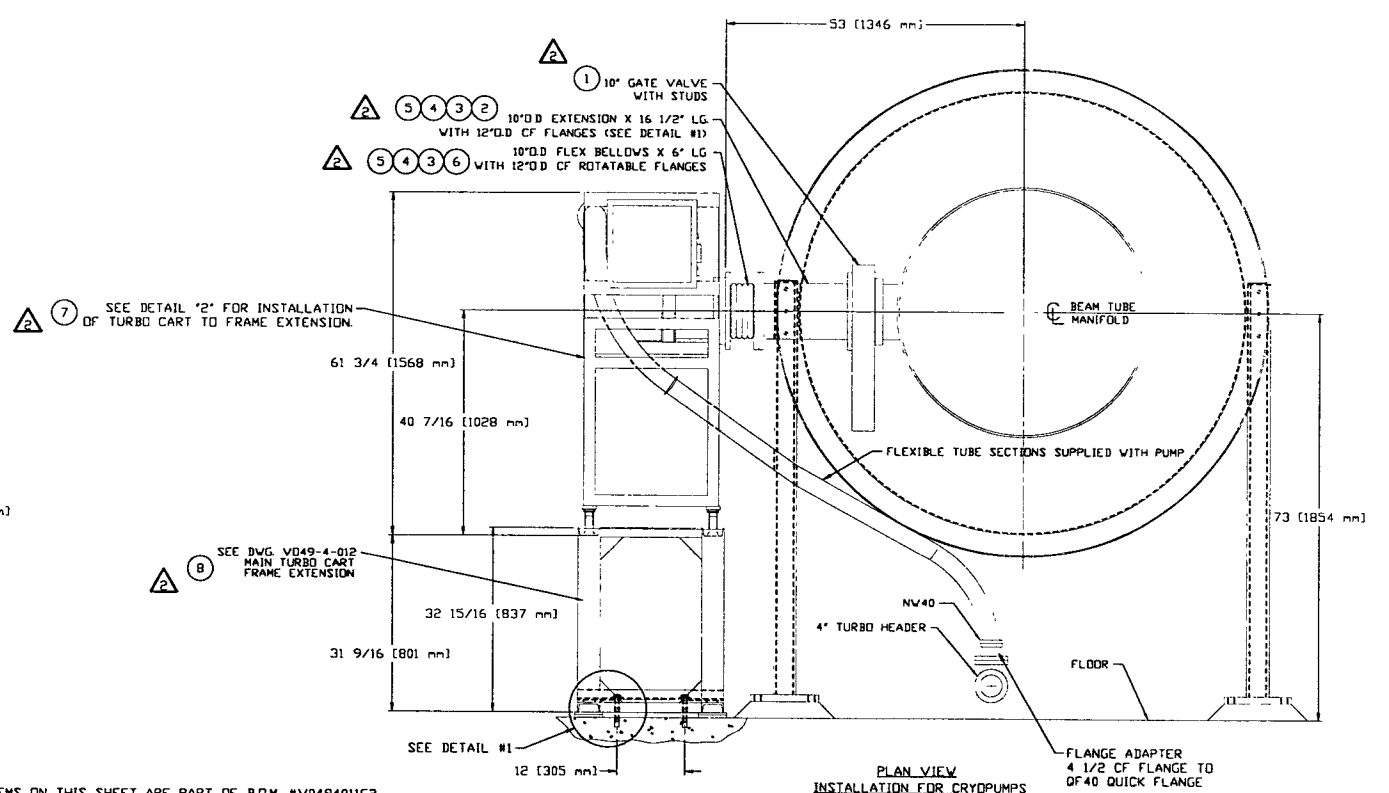
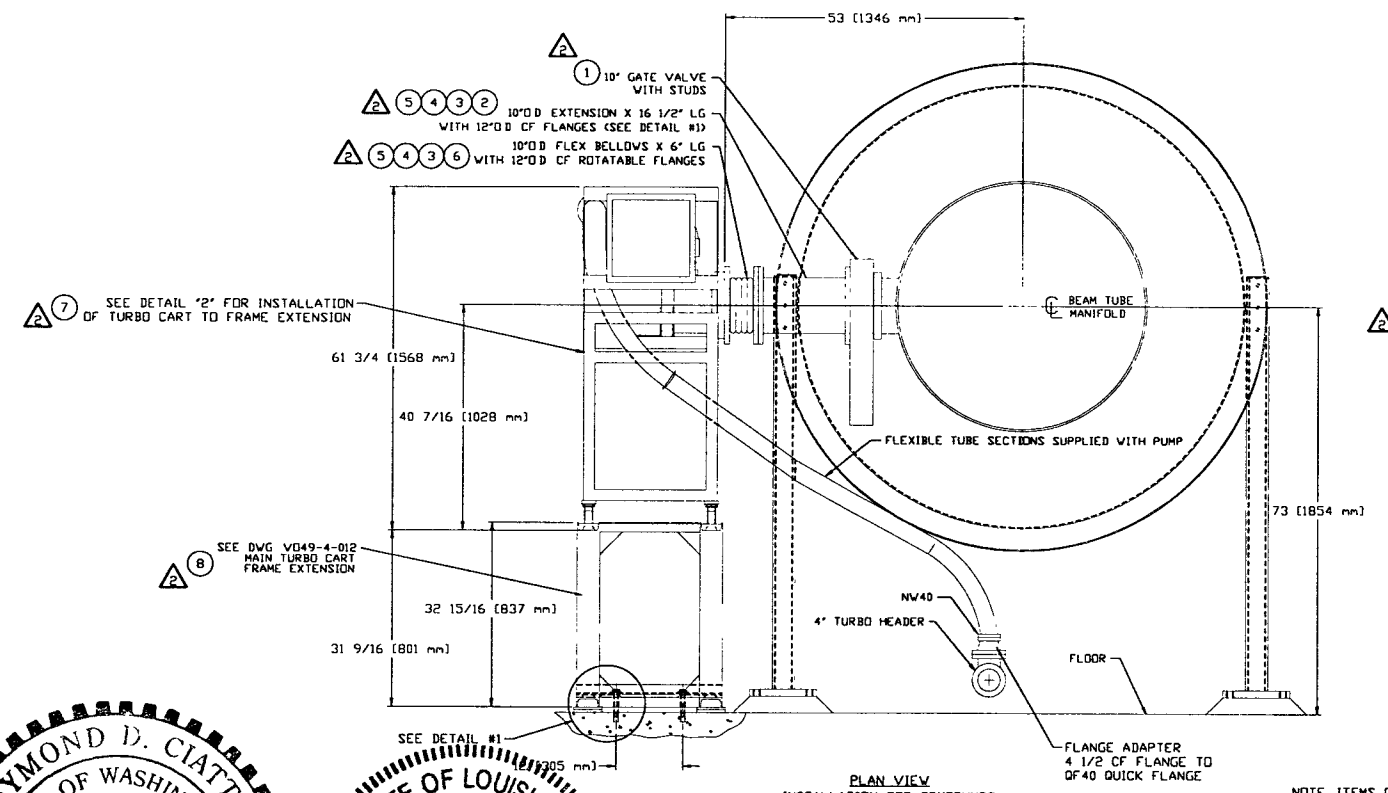
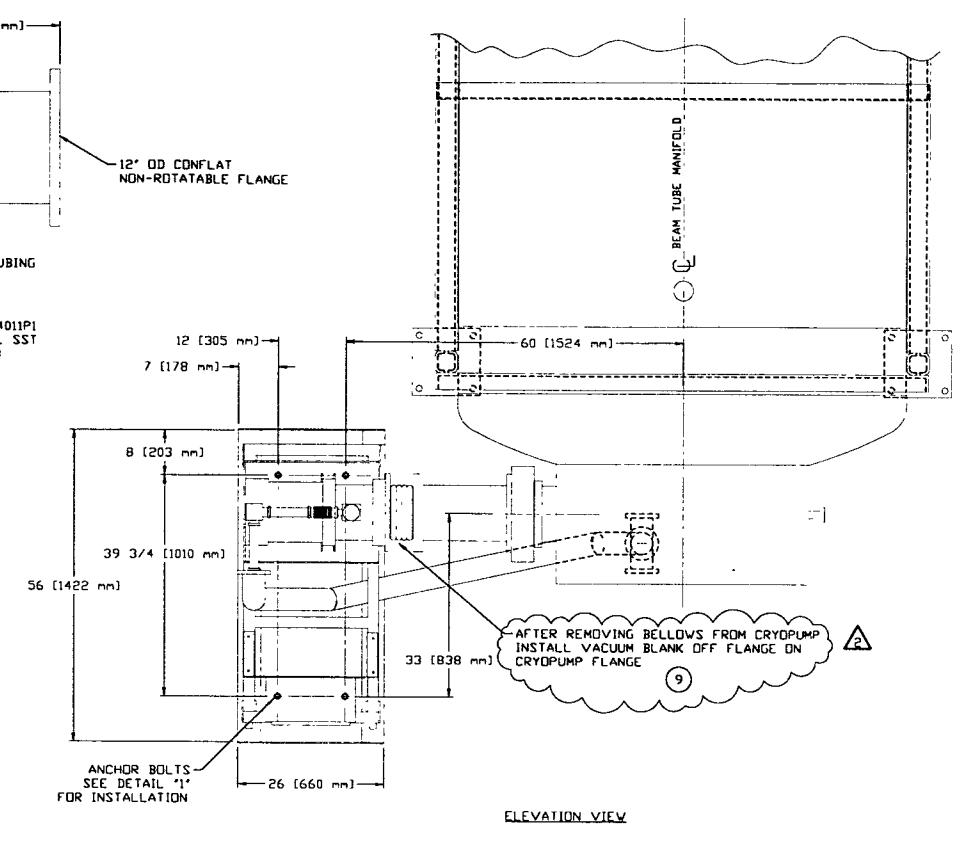
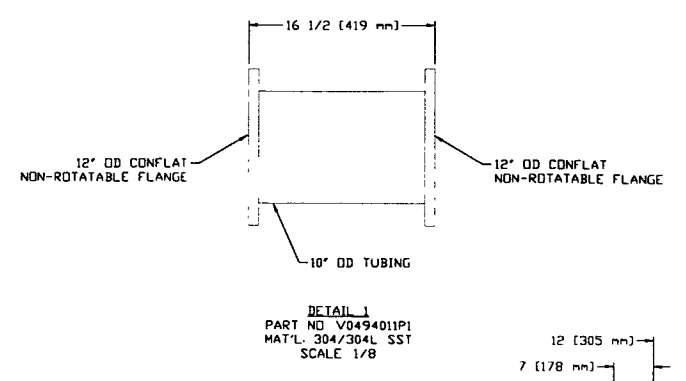
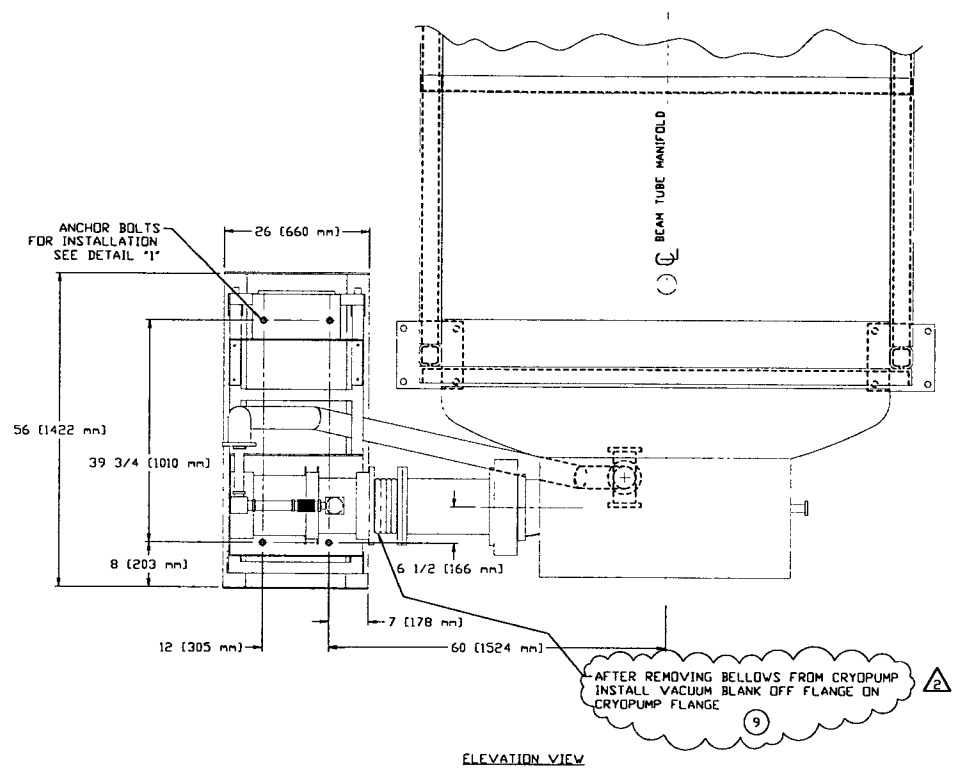


DETAIL "1"

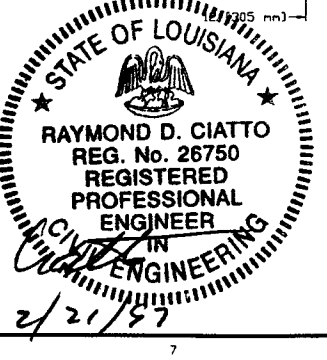
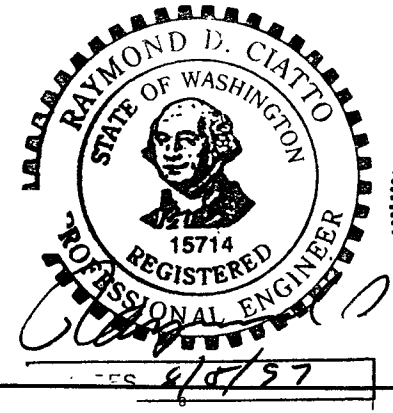
0961098-02-V

| | | | | | | | | | | | | | |
|---|--|---|--|--|--|---|--|---|--|--|--|-------------------|--|
| <p>PROPRIETARY AND CONFIDENTIAL</p> <p>THIS DRAWING CONTAINS PROPRIETARY INFORMATION BELONGING TO PROCESS SYSTEMS INTERNATIONAL, INC. OR ITS AFFILIATED COMPANIES AND SHALL BE USED ONLY FOR THE PURPOSE FOR WHICH IT WAS SUPPLIED. IT SHALL NOT BE COPIED, REPRODUCED OR OTHERWISE USED, NOR SHALL SUCH INFORMATION BE FURNISHED IN WHOLE OR IN PART TO OTHERS EXCEPT IN ACCORDANCE WITH THE TERMS OF ANY AGREEMENT UNDER WHICH IT WAS SUPPLIED OR WITH THE PRIOR WRITTEN CONSENT OF PROCESS SYSTEMS INTERNATIONAL, INC. AND SHALL BE RETURNED UPON REQUEST.</p> | | <p>UNLESS OTHERWISE SPECIFIED DIMENSIONS ARE IN INCHES</p> <p>DECIMALS: ± 0.005 FRACTIONAL: ± 1/16" ANGULAR: ± 30' BEND ± 2" TWO PLACE DECIMAL ± 0.01 THREE PLACE DECIMAL ± 0.005 FINISHED SURFACE RMS BREAK CORNERS IN REMOVE ALL BURRS</p> <p>DO NOT SCALE THIS DRAWING</p> <p>USED ON: _____ NEXT ASS'Y: _____</p> | | <p>2 ISSUED FOR FABRICATION & INSTALLATION</p> <p>1 FDR DESIGN UPDATE / ISSUED FOR BID</p> <p>0 ISSUED FOR FDR</p> | | <p>REV DESCRIPTION</p> <p>DMW RDC REC BAR 02/20/97 0387</p> <p>DMW RDC REC TOV 4/25/96 0150</p> | | <p>PROCESS SYSTEMS INTERNATIONAL, INC.</p> <p>20 WALKUP DR. WESTBOROUGH, MASSACHUSETTS 01581 USA</p> <p>MAIN TURBO PUMP CART ARRANGEMENT ASSEMBLY LIGO VACUUM EQUIPMENT</p> | | <p>CAB FILE V0494011 SIZE D DWG NO V049-4-011 SHEET 1 OF 2</p> | | <p>SCALE 1/16</p> | |
|---|--|---|--|--|--|---|--|---|--|--|--|-------------------|--|

Feb 21, 1997 12:20:50



NOTE ITEMS ON THIS SHEET ARE PART OF B.O.M. #V0494011G2



SEE SHEET 1 FOR REVISIONS

| | | | |
|--|-----------------|------------------------|----------|
| PROCESS SYSTEMS INTERNATIONAL INC. 20 WALKUP DR WESTBOROUGH, MASSACHUSETTS 01581 USA | | | |
| MAIN TURBO PUMP CART ARRANGEMENT ASSEMBLY LIGD VACUUM EQUIPMENT | | | |
| CAB FILE 4011S2 | SIZE D | DWG. NO. V049-4-011 | REV 2 |
| SCALE 1/16 | SHEET 2 OF 2 | | |

Feb 21, 1997 - 1018