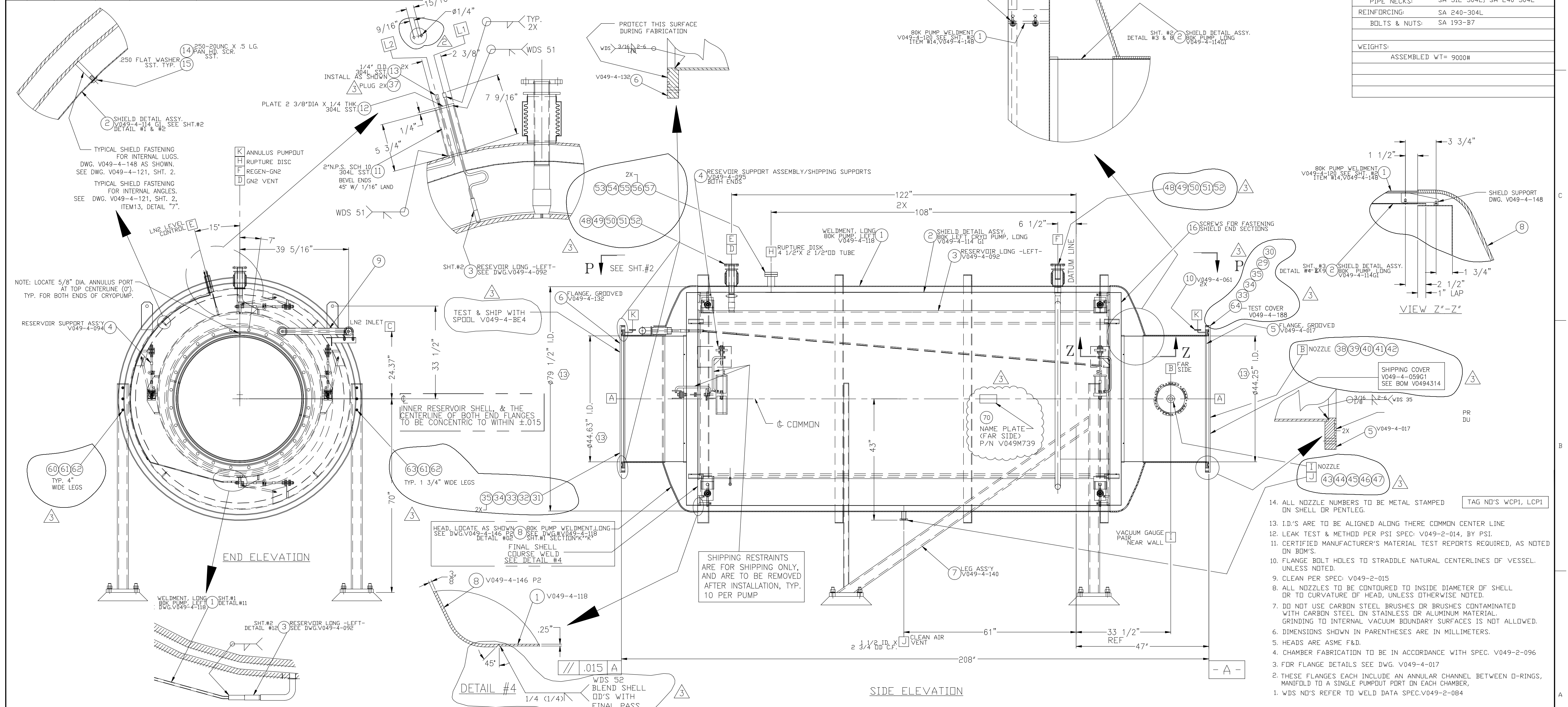


NOZZLE SCHEDULE					DESCRIPTION				
MARK	QTY	SIZE	RATING	TYPE	MARK	QTY.	SIZE	TYPE	DESCRIPTION
A	2	44.63" I.D.		SEE NOTE #1 & #2	L1	1	1/4"	FPT	LN ₂ LEVEL CONTROL
B	1	10" OD TUBE		1 1/2" OD. CONFLAT W/BLIND FLANGE	L2	1	1/4"	FPT	LN ₂ LEVEL CONTROL
C	1	1/2" X 2"		VAC. JACKET W/ BAYONET BLIND					
D	1	1 1/2" PIPE		1 1/2" ASA FLG. 5" OD.					
E	1	2" O.D. PIPE		PANT LEG					
F	1	1 1/2" PIPE		1 1/2" ASA FLG. 5" OD.					
I	1	1 1/2" OD. TUBE		2 3/4" OD. CONFLAT W/BLIND FLANGE					
J	1	1 1/2" OD. TUBE		2 3/4" OD. CONFLAT W/BLIND FLANGE					
H	1	2 1/2" OD. TUBE		4 1/2" OD. CONFLAT W/BLIND FLANGE					
K	2	3/4" OD TUBE		2 3/4" OD CONFLAT					

DESIGN DATA	
CORROSION ALLOWANCE:	0
POSTWELD HEAT TREATMENT:	MBS
FIREPROOFING:	N.A.
RADIOGRAPHING:	NONE
MATERIALS	
HEADS:	SA 240-304L
SHELL:	SA 240-304, 304L
FLANGES:	SA 182 GRADE F, 304L
PIPE NECKS:	SA 312-304L; SA 240-304L
REINFORCING:	SA 240-304L
BOLTS & NUTS:	SA 193-B7
WEIGHTS:	
ASSEMBLED WT=	9000#



PROPRIETARY AND CONFIDENTIAL		DRAWING TREE/BOM/STRUCTURE		SYMBOL CHARACTERISTIC		UNLESS OTHERWISE SPECIFIED		DIMENSIONS ARE IN INCHES		TOLERANCES:		REVISED FOR FABRICATION AS NOTED		REVISED FOR FABRICATION AS NOTED		ISSUED FOR FABRICATION/FDR UPDATE - MAJOR REVISIONS		ISSUED FOR FDR								
THIS DOCUMENT CONTAINS PROPRIETARY INFORMATION BELONGING TO PROCESS SYSTEMS INTERNATIONAL, INC. OR ITS AFFILIATED COMPANIES AND SHALL BE USED ONLY FOR THE PURPOSE FOR WHICH IT WAS SUPPLIED. IT SHALL NOT BE COPIED, REPRODUCED OR OTHERWISE USED, NOR SHALL SUCH INFORMATION BE FURNISHED IN WHOLE OR IN PART TO OTHERS EXCEPT IN ACCORDANCE WITH THE TERMS OF ANY AGREEMENT UNDER WHICH IT WAS SUPPLIED OR WITH THE PRIOR WRITTEN CONSENT OF PROCESS SYSTEMS INTERNATIONAL, INC. AND SHALL BE RETURNED UPON REQUEST.		V049-0-100	DRAWING TREE/BOM/STRUCTURE	□	FLATNESS	FRACTIONAL ± .1	3	REVISED FOR FABRICATION AS NOTED	DmW	PEF	PC	RDC	REC	BAR	5/19/97	0431	1	ISSUED FOR FABRICATION/FDR UPDATE - MAJOR REVISIONS	DmW	PEF	GS	RDC	REC	PV	12/30/96	0346
		V049-4-140	SUPPORT LEG ASSY.	○	CYLINDRICITY	ANGULAR ± 1°	2	REVISED FOR FABRICATION AS NOTED	DmW	PEF	PC	RDC	REC	BAR	1/17/97	0400	0	ISSUED FOR FDR				REC	DMW	TDV	7/2/96	0144
		V049-4-114 G1	SHIELD ASSY.	∥	PARALLELISM	TWO PLACE DECIMAL ± .03																				
		V049-4-095	RESERVOIR SUPPORTS	∠	PERPENDICULARITY	THREE PLACE DECIMAL ± .015																				
		V049-4-118	VESSEL WELDMENT	⊥	PERPENDICULARITY	FINISHED SURFACE RMS 6.3																				
		V049-4-092	80K PUMP RESERVOIR	∠	ANGULARITY	BREAK CORNERS IN DUTY REMOVE ALL BURRS																				
DWG. NO.	DESCRIPTION	DWG. NO.	DESCRIPTION	⊕	TRUE POSITION	USED IN:	REV	DESCRIPTION	SCALE	NONE	SHEET	1 OF 2														
				⊙	CONCENTRICITY	NEXT ASS'Y:																				

PROCESS SYSTEMS INTERNATIONAL, INC.
 20 WALKUP DR. WESTBOROUGH, MASSACHUSETTS 01581 USA

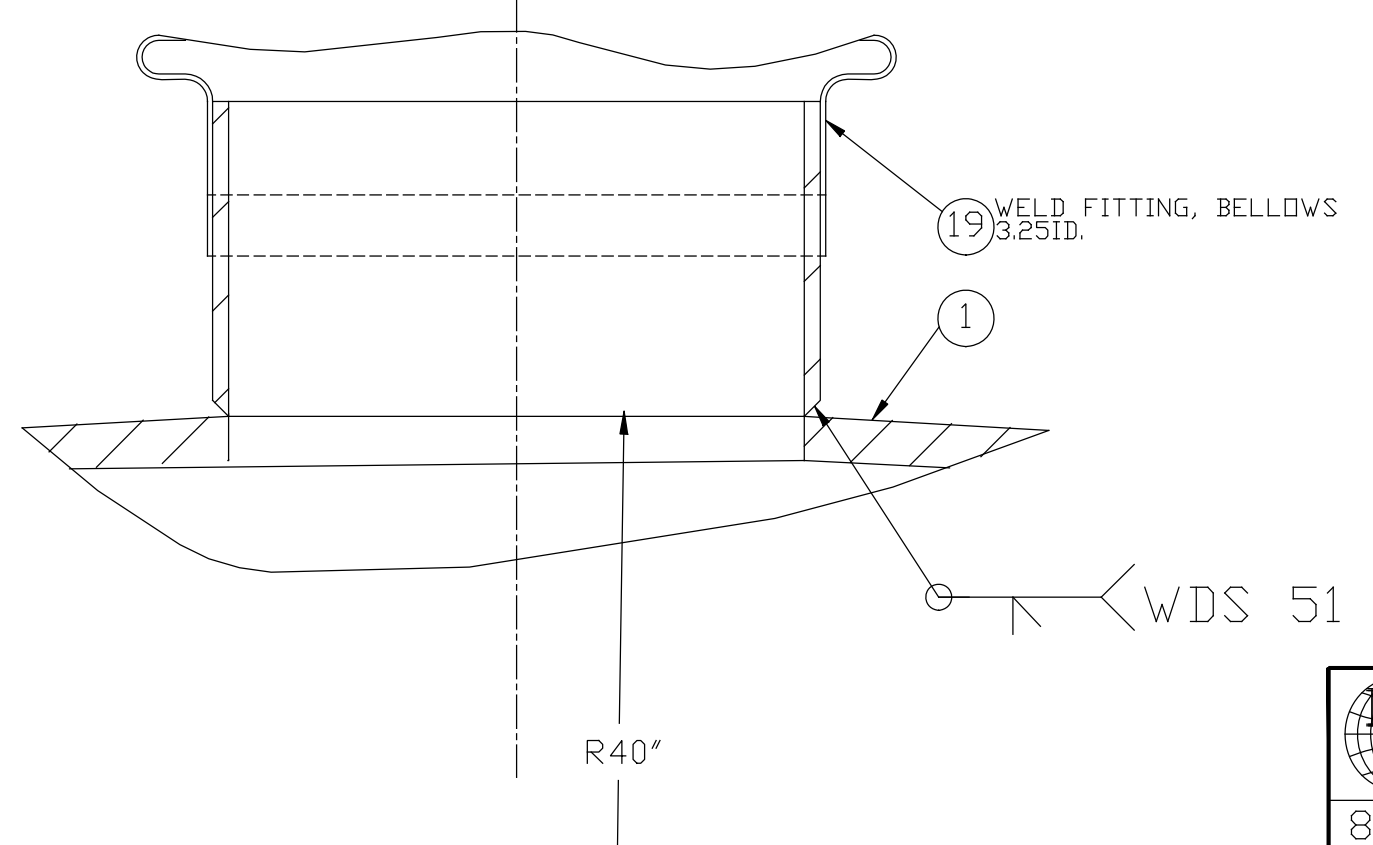
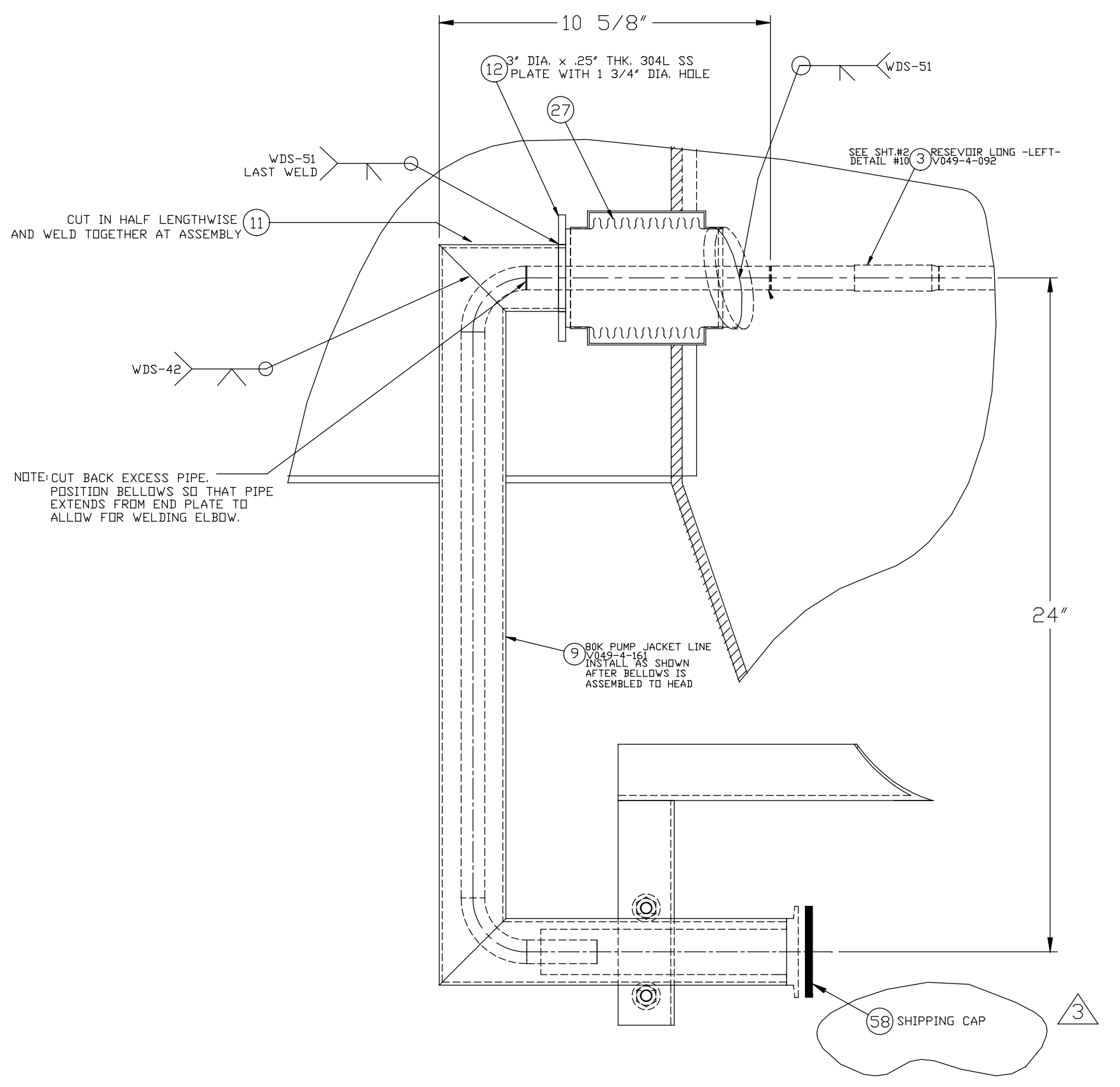
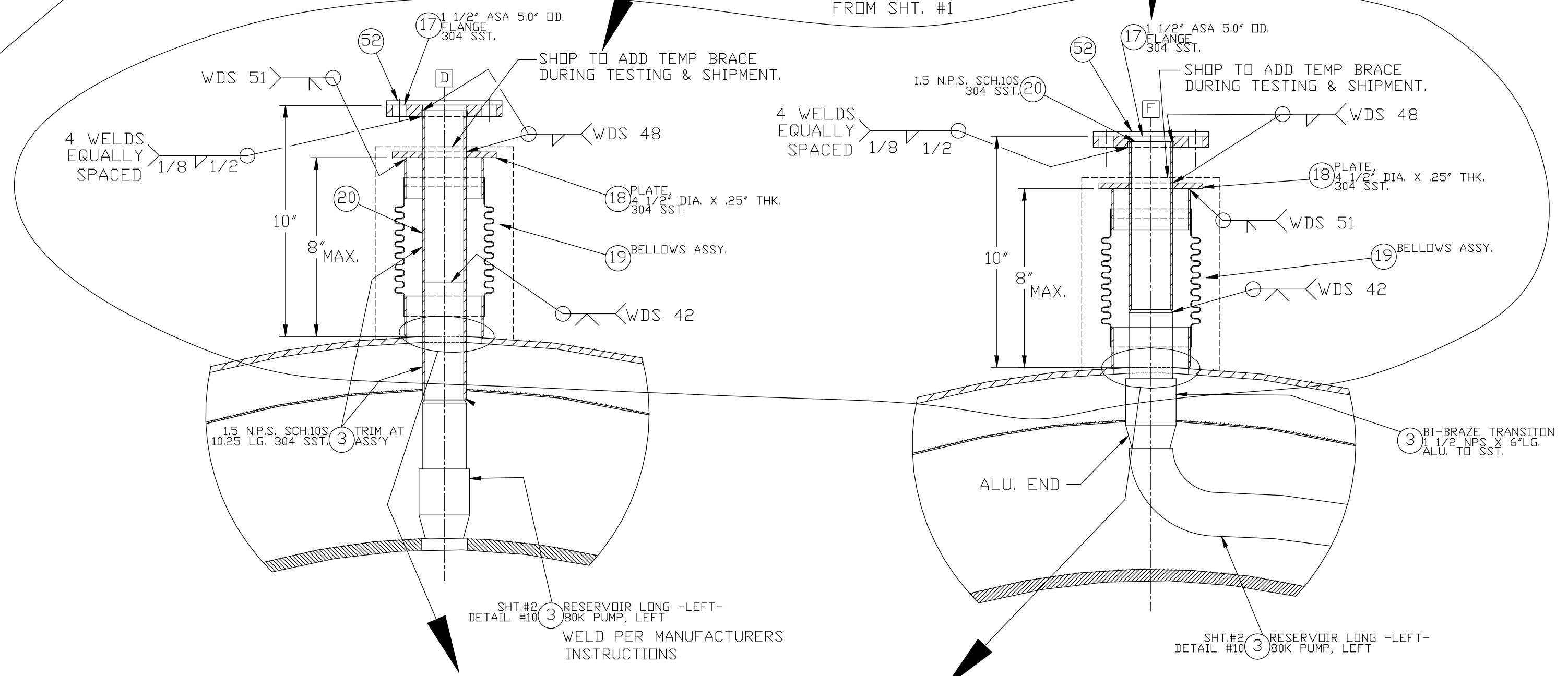
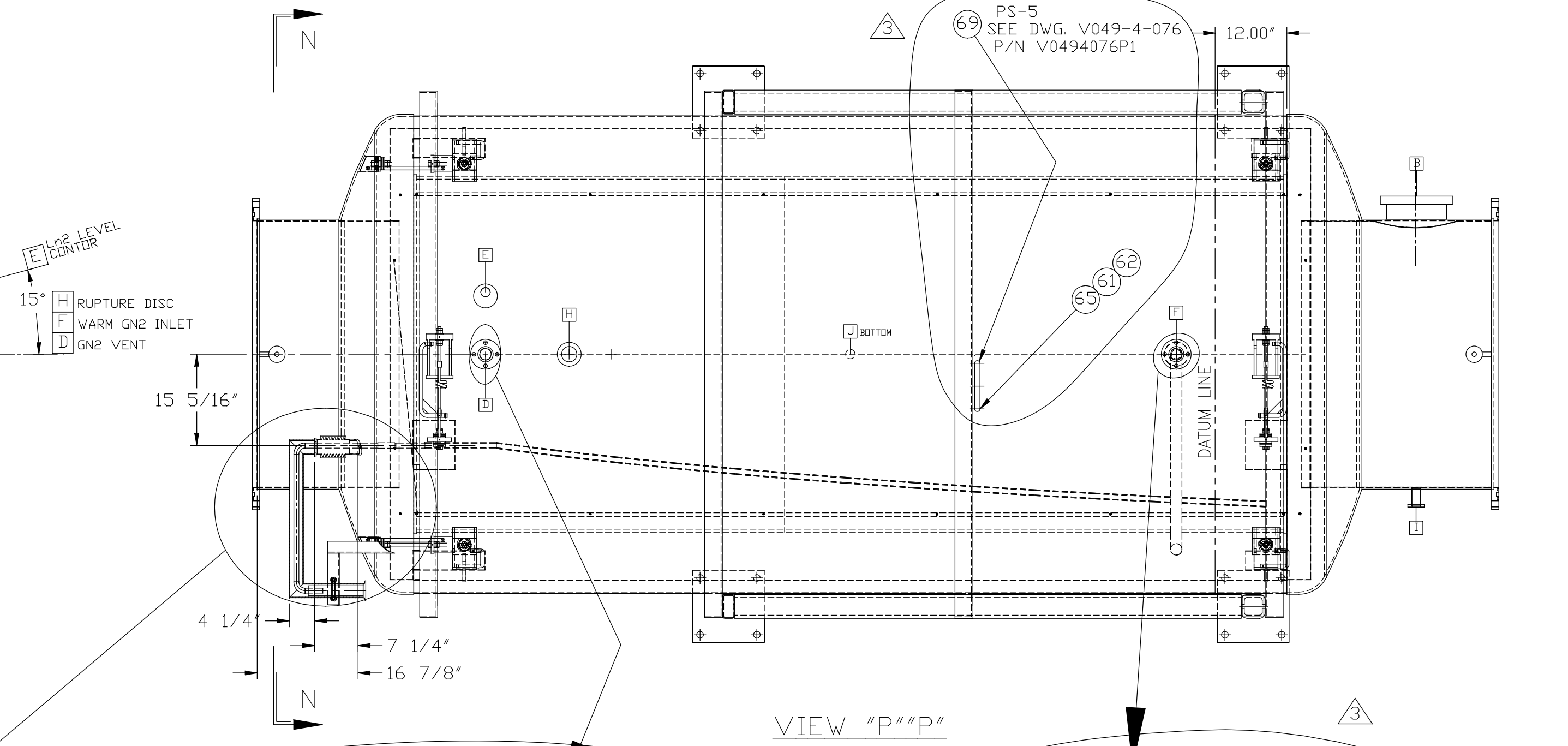
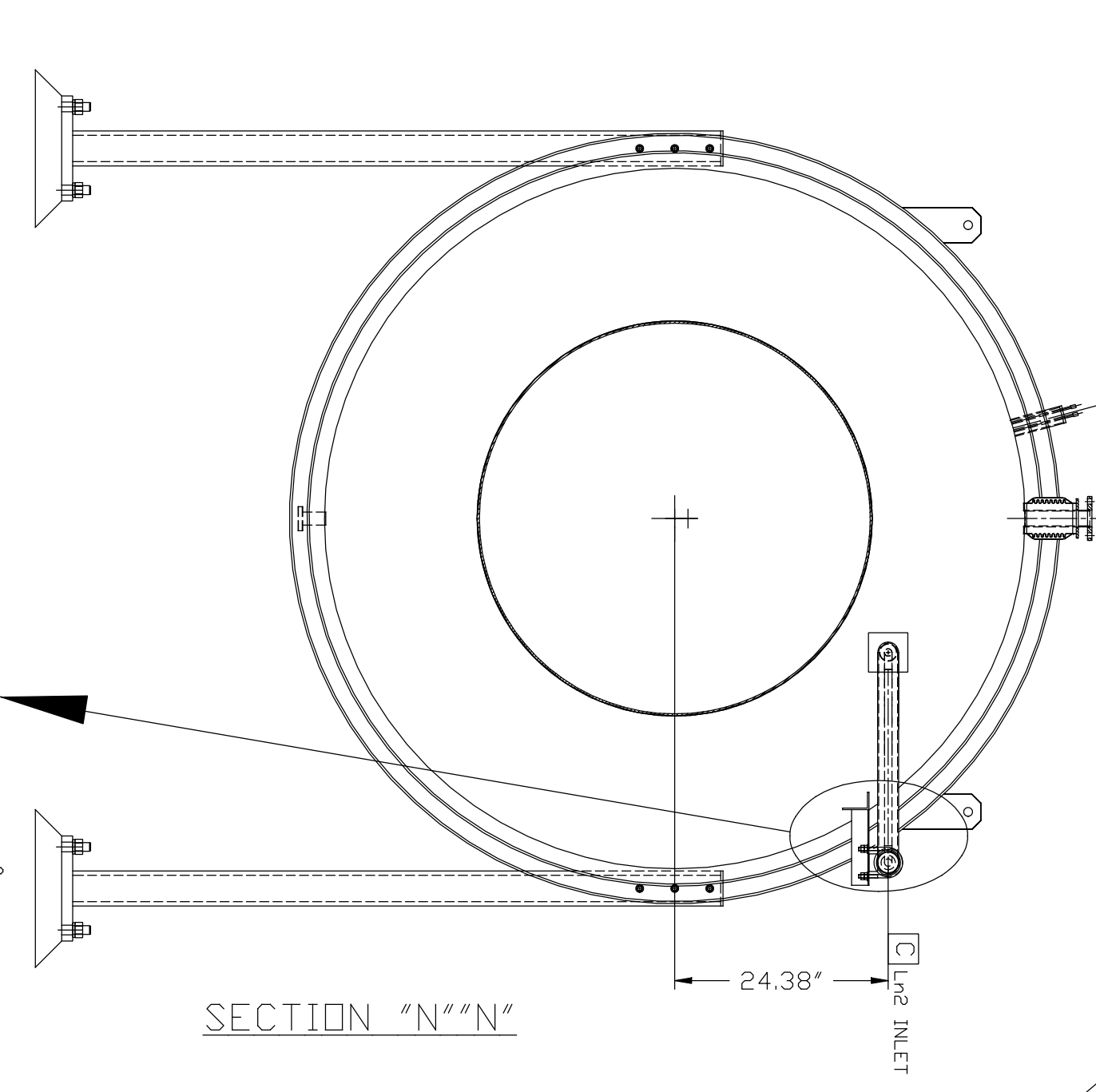
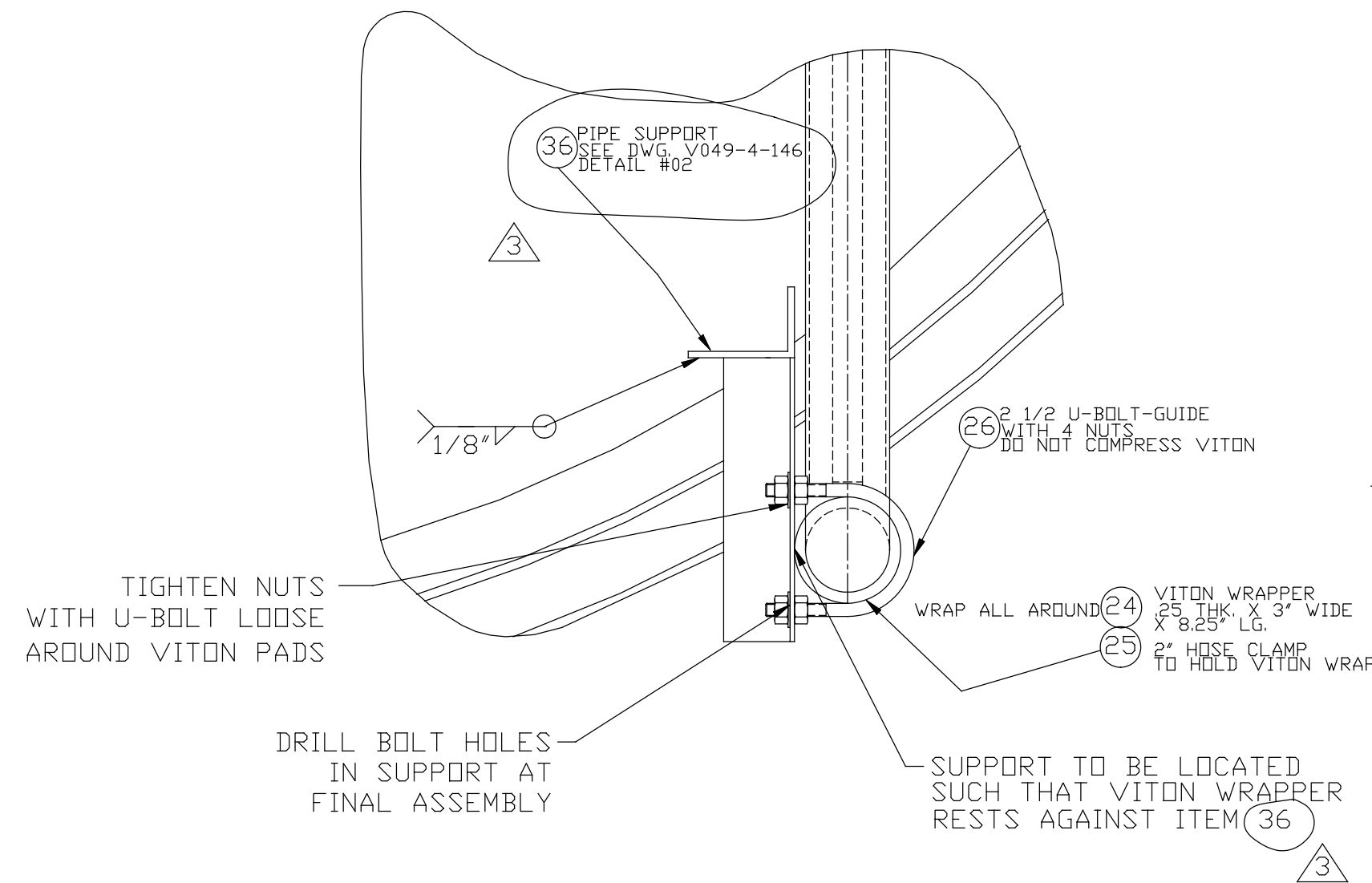
BOK PUMP GENERAL ARR'G'T-LONG-LEFT

LIGO VACUUM EQUIPMENT

CAD FILE: 49400451 | SIZE: D | DWG. NO.: V049-4-004 | REV: 3

SCALE: NONE | SHEET: 1 OF 2

150812



SEE SHEET 1 FOR REVISIONS

PROCESS SYSTEMS INTERNATIONAL INC. 20 WALKUP DR. WESTBOROUGH, MASSACHUSETTS 01581 USA			
80K PUMP GENERAL ARR'G-LONG-LEFT			
LIGO VACUUM EQUIPMENT			
CAD FILE 494004S2	SIZE D	DWG. NO. V049-4-004	REV. 3
SCALE NONE	SHEET 2 OF 2		

Jun 24, 1997 - 154923