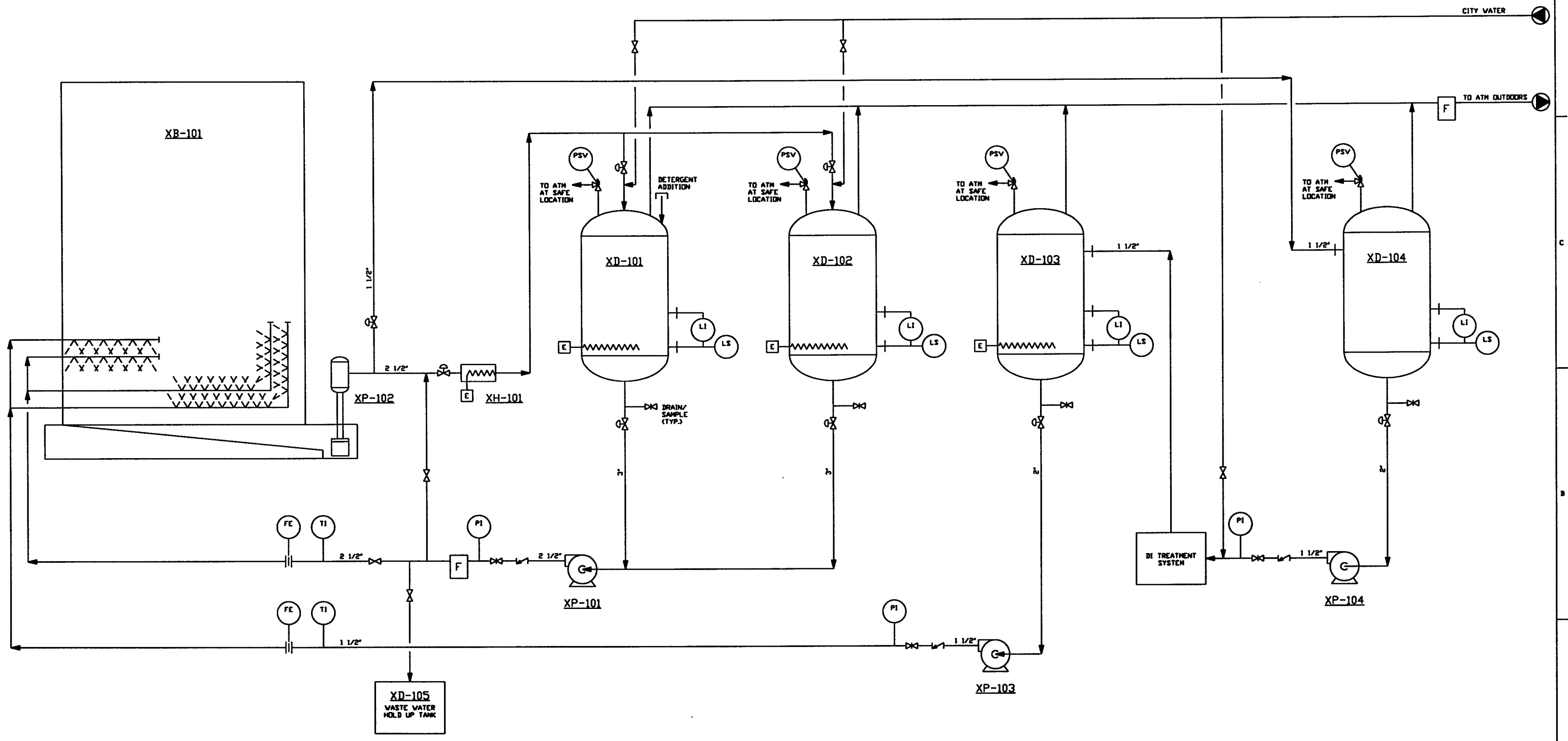


XB-101 WASHING BOOTH 14'-0" x 14'-0" x 14'-0"	XP-102 WASH BOOTH SUMP PUMP DESIGN: 60 GPM @ ΔP = 11.0 PSIG MECH DESIGN PRESS: 38 PSIG HP: 1.0	XD-105 WASTE WATER HOLD UP TANK 4'-0" ID x 5'-0" T/1	XH-101 WASH/RINSE WATER REHEATER HP: 0.55 x 10 ⁶ BTU/HR	XP-101 WASH/RINSE WATER PUMP DESIGN: 60 GPM @ ΔP = 85 PSIG MECH DESIGN PRESS: 130 PSIG HP: 7.5	XD-101 WASH WATER STORAGE TANK 2'-6" ID x 3'-6" T/1 MECH DESIGN PRESS: 50 PSIG TEMP: 200°F	XD-102 RINSE WATER STORAGE TANK 2'-6" ID x 3'-6" T/1 MECH DESIGN PRESS: 50 PSIG TEMP: 200°F	XP-103 DI PUMP DESIGN: 24 GPM @ ΔP = 38.4 PSIG MECH DESIGN PRESS: 75 PSIG HP: 1.5	XD-103 DI STORAGE TANK 3'-6" ID x 3'-6" T/1 MECH DESIGN PRESS: 50 PSIG TEMP: 200°F	XP-104 DI RETURN PUMP DESIGN: 24 GPM @ ΔP = 68 PSIG MECH DESIGN PRESS: 110 PSIG HP: 2.0	XD-104 DI RETURN TANK 3'-6" ID x 3'-6" T/1 MECH DESIGN PRESS: 50 PSIG TEMP: 200°F
--	--	---	---	--	--	---	---	--	---	---



LIGO D961091-00-V

<p>PROPERTY AND CONFIDENTIAL</p> <p>DOCUMENT CONTAINS PROPRIETARY INFORMATION BELONGING TO PROCESS SYSTEMS INTERNATIONAL, INC. OR ITS SUBSIDIARIES AND SHALL BE USED ONLY FOR THE PURPOSE FOR WHICH IT WAS SUPPLIED. IT SHALL NOT BE COPIED, REPRODUCED OR OTHERWISE USED, NOR SHALL SUCH INFORMATION BE FURNISHED IN WHOLE OR IN PART TO ANY OTHER PARTY WITHOUT THE WRITTEN CONSENT OF PROCESS SYSTEMS INTERNATIONAL, INC. AND SHALL BE RETURNED UPON REQUEST.</p>		<p>UNLESS OTHERWISE SPECIFIED DIMENSIONS ARE IN INCHES</p> <p>TOLERANCES: FRACTIONS: ± 1/16" (1/32" MIN) DECIMALS: ± 0.005" (0.010" MIN) THREE PLACE DECIMALS: ± 0.001" (0.002" MIN) FINISHED SURFACE: RING BEARING SURFACE TO OUT-REMOVE ALL BURRS</p>		<p>DO NOT SCALE THIS DRAWING</p> <p>USED ON: _____</p> <p>NEXT ASSY: _____</p>		<p>ISSUED FOR INFORMATION</p> <p>REV: _____</p> <p>DESCRIPTION: _____</p> <p>ISSUE DESCRIPTION: _____</p>		<p>PROCESS SYSTEMS INTERNATIONAL, INC. 20 WILBUR DR. WESTBOROUGH, MASSACHUSETTS 01581 USA</p> <p>PIPING & INSTRUMENTATION DIAGRAM LIGO VACUUM EQUIPMENT WASHING SYSTEM</p>		<p>CAB FILE: V0490031</p> <p>SIZE: D</p> <p>DWG. NO.: V049-0-031</p> <p>REV: 0</p> <p>SCALE: NONE</p> <p>SHEET: 1 OF 1</p>	
<p>DATE: 05.03.96</p> <p>BY: KY</p> <p>CHKD: _____</p> <p>DRWN: _____</p> <p>DATE: _____</p> <p>DECR: _____</p>		<p>REV: 0</p> <p>DESCRIPTION: _____</p> <p>ISSUE DESCRIPTION: _____</p>		<p>DO NOT SCALE THIS DRAWING</p> <p>USED ON: _____</p> <p>NEXT ASSY: _____</p>		<p>ISSUED FOR INFORMATION</p> <p>REV: _____</p> <p>DESCRIPTION: _____</p> <p>ISSUE DESCRIPTION: _____</p>		<p>PROCESS SYSTEMS INTERNATIONAL, INC. 20 WILBUR DR. WESTBOROUGH, MASSACHUSETTS 01581 USA</p> <p>PIPING & INSTRUMENTATION DIAGRAM LIGO VACUUM EQUIPMENT WASHING SYSTEM</p>		<p>CAB FILE: V0490031</p> <p>SIZE: D</p> <p>DWG. NO.: V049-0-031</p> <p>REV: 0</p> <p>SCALE: NONE</p> <p>SHEET: 1 OF 1</p>	

May 03, 1996 - 151644