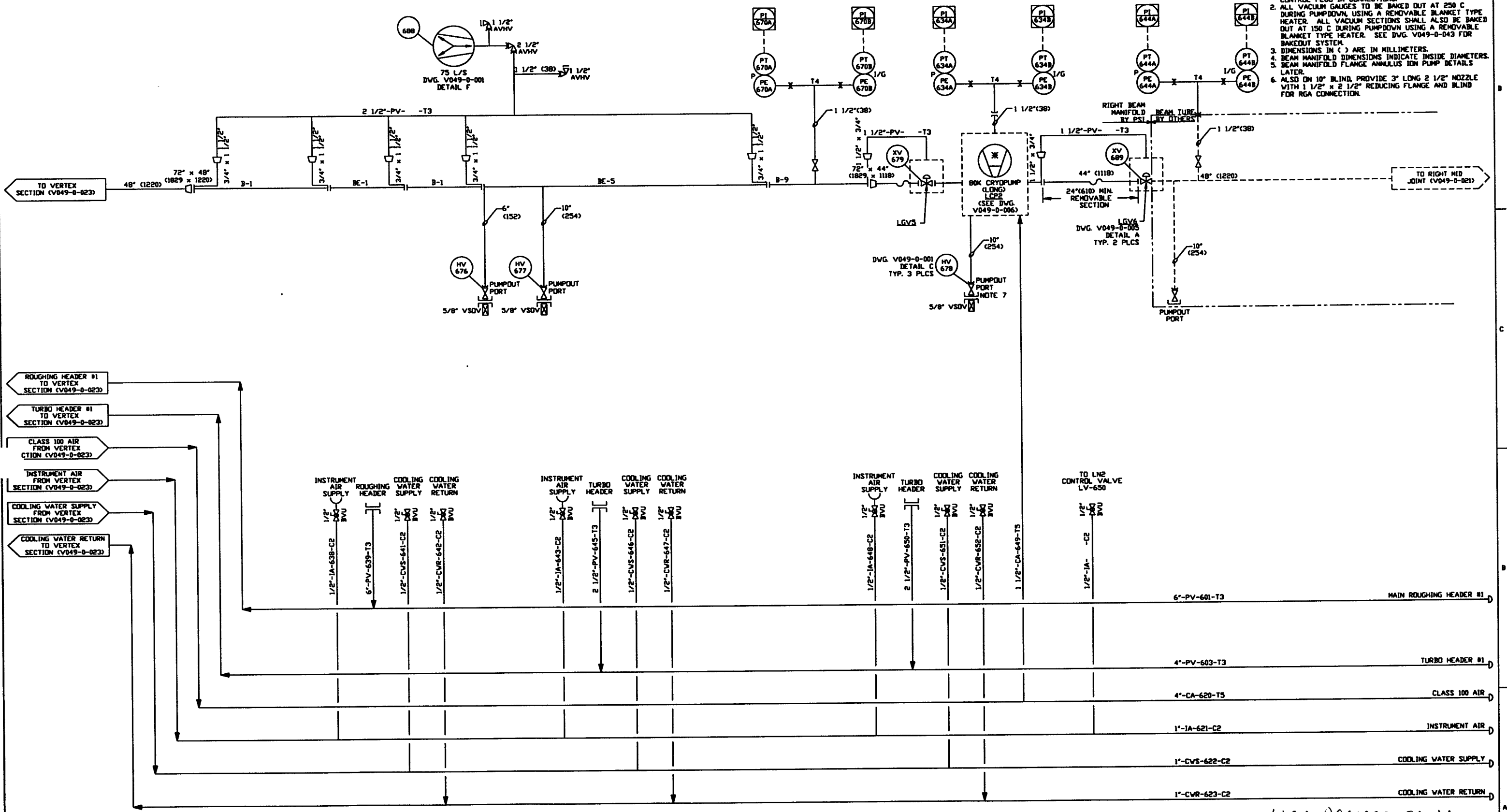


NOTES:

1. EACH PUMPOUT PORT LOCATION HAS BOTH POWER & CONTROL PLUG-IN CONNECTIONS.
2. ALL VACUUM GAUGES TO BE BAKED OUT AT 250 C DURING PUMPDOWN USING A REMOVABLE BLANKET TYPE HEATER. ALL VACUUM SECTIONS SHALL ALSO BE BAKED OUT AT 150 C DURING PUMPDOWN USING A REMOVABLE BLANKET TYPE HEATER. SEE DWG. V049-0-043 FOR BAKEDOUT SYSTEM.
3. DIMENSIONS IN () ARE IN MILLIMETERS.
4. BEAM MANIFOLD DIMENSIONS INDICATE INSIDE DIAMETERS.
5. BEAM MANIFOLD FLANGE ANNULUS IDN PUMP DETAILS LATER.
6. ALSO ON 10" BLIND, PROVIDE 3" LONG 2 1/2" NOZZLE WITH 1 1/2" x 2 1/2" REDUCING FLANGE AND BLIND FOR RGA CONNECTION.



<p>PROPRIETARY AND CONFIDENTIAL</p> <p>THIS DOCUMENT CONTAINS PROPRIETARY INFORMATION BELONGING TO PROCESS SYSTEMS INTERNATIONAL, INC. OR ITS AFFILIATED COMPANIES AND SHALL BE USED ONLY FOR THE PURPOSES FOR WHICH IT WAS SUPPLIED. IT SHALL NOT BE COPIED, REPRODUCED OR OTHERWISE DISCLOSED IN WHOLE OR IN PART TO ANY OTHER PERSON OR ENTITY WITHOUT THE WRITTEN CONSENT OF PROCESS SYSTEMS INTERNATIONAL, INC. AND SHALL BE RETURNED UPON REQUEST.</p>		<p>EQUIP. THIS DWG.</p> <p>LGV5 LCP2</p> <p>LGV6</p>	<p>UNLESS OTHERWISE SPECIFIED DIMENSIONS ARE IN INCHES</p> <p>TOLERANCES:</p> <p>FRACTIONAL & DECIMALS: ±0.005</p> <p>WELDS: ±0.015</p> <p>THREE PLACE DECIMAL: ±0.001</p> <p>FINISHED SURFACE: SEE DWG.</p> <p>REMOVE ALL BURRS</p>	<p>1 ISSUE FOR FDR</p> <p>0 ISSUE FOR DESIGN</p>	<p>REB TS PA Am D J P W</p> <p>04-26-96 0134</p> <p>01-03-96 0031</p>	<p>SCALE NONE</p> <p>SHEET 1 OF 1</p>					
DWG. NO.	DESCRIPTION	DWG. NO.	DESCRIPTION	USED ON	REV	DESCRIPTION	ISSUE DESCRIPTION	CHKD	DRWN	DATE	DESD
V049-0-023	P & ID VERTEX SECTION										
V049-0-021	P & ID LEFT & RIGHT MID JOINTS										
V049-0-006	P & ID 60K CRYOPUMP										
V049-0-001	P & ID LEGEND										
REFERENCE DRAWINGS											

LIGO 1961088-01-V

PROCESS SYSTEMS INTERNATIONAL INC.
 20 WALRUP DR. WESTBOROUGH, MASSACHUSETTS 01581 USA

PIPING & INSTRUMENTATION DIAGRAM
 LIGO VACUUM EQUIPMENT
 LOUISIANA SITE
 RIGHT BEAM MANIFOLD

CAD FILE: V0490024
 SHEET: D
 DWG. NO.: V049-0-024
 REV: 1