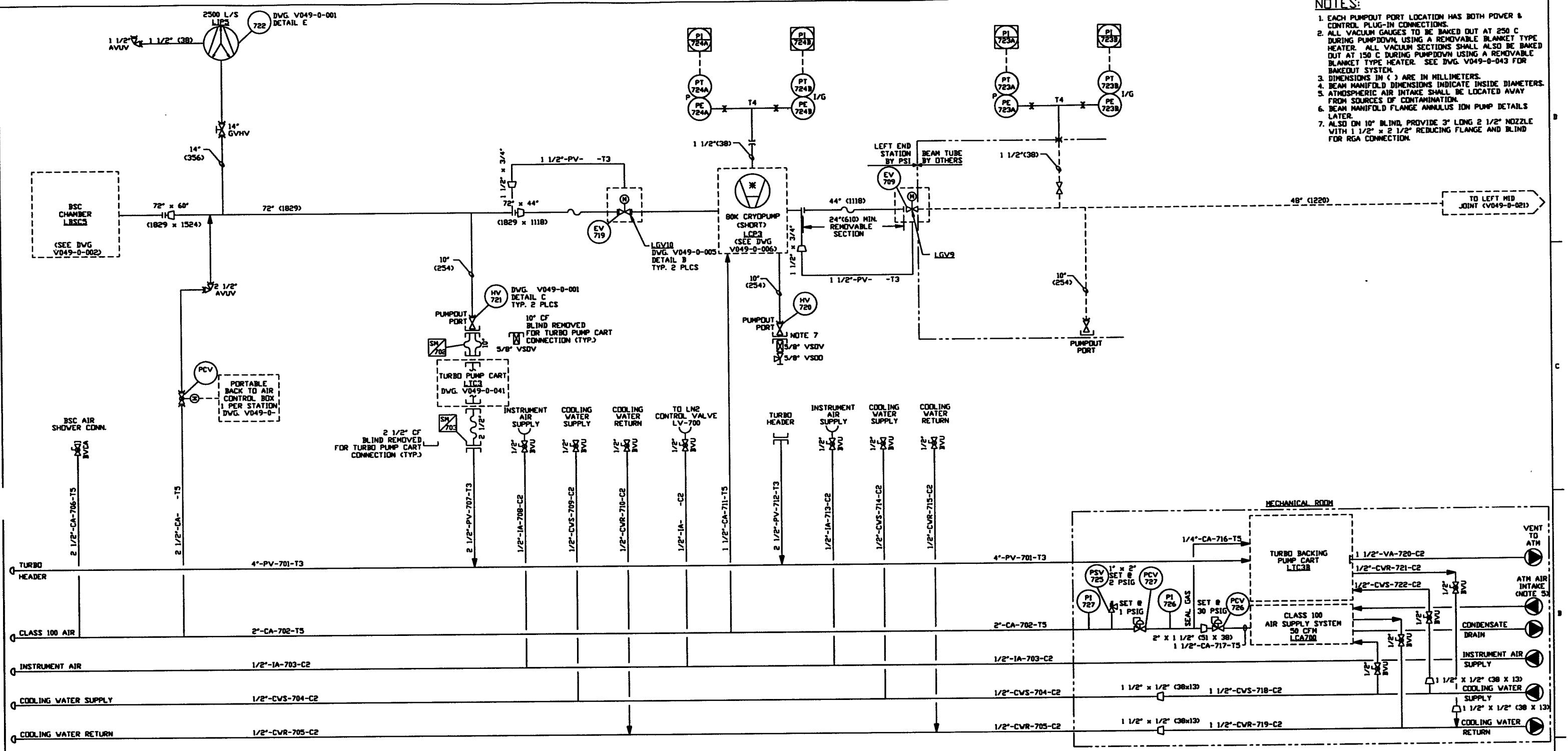


NOTES:

1. EACH PUMPOUT PORT LOCATION HAS BOTH POWER & CONTROL PLUG-IN CONNECTIONS.
2. ALL VACUUM GAUGES TO BE BAKED OUT AT 250 C DURING PUMPDOWN USING A REMOVABLE BLANKET TYPE HEATER. ALL VACUUM SECTIONS SHALL ALSO BE BAKED OUT AT 150 C DURING PUMPDOWN USING A REMOVABLE BLANKET TYPE HEATER. SEE DWG. V049-0-043 FOR BAKEDOUT SYSTEM.
3. DIMENSIONS IN () ARE IN MILLIMETERS.
4. BEAM MANIFOLD DIMENSIONS INDICATE INSIDE DIAMETERS.
5. ATMOSPHERIC AIR INTAKE SHALL BE LOCATED AWAY FROM SOURCES OF CONTAMINATION.
6. BEAM MANIFOLD FLANGE ANNULUS ION PUMP DETAILS LATER.
7. ALSO ON 10" BLIND, PROVIDE 3" LONG 2 1/2" NOZZLE WITH 1 1/2" x 2 1/2" REDUCING FLANGE AND BLIND FOR RGA CONNECTION.



DWG. NO.	DESCRIPTION	DWG. NO.	DESCRIPTION	EQUIP. THIS DWG.	UNLESS OTHERWISE SPECIFIED DIMENSIONS ARE IN INCHES TOLERANCES: FRACTIONAL & DECIMALS .00-29" DIMS .01" TWO PLACE DECIMAL & .00 FINEST SURFACE FINISH BREAK CHANGES IN OUT REMOVE ALL DIMS	REV	DESCRIPTION	ISSUE DESCRIPTION	CHKD	DRWN	DATE	DED
V049-0-041	P & ID TURBO PUMP CART			LSCS LGV9		1	ISSUE FOR FDR				04.26.96	0134
V049-0-021	P & ID LEFT & RIGHT MID JOINTS			LIPS LGV10		0	ISSUE FOR DESIGN				01.03.96	0031
V049-0-006	P & ID BOX CRYOPUMP			LTC3 LCP3								
V049-0-002	P & ID BEAM SPLITTER CHAMBER											
V049-0-001	P & ID LEGEND											
	REFERENCE DRAWINGS											

LIGO V961084-01-V

PROCESS SYSTEMS INTERNATIONAL INC.
 20 WILBUR DR. WESTBOROUGH, MASSACHUSETTS 01581 USA

PIPING & INSTRUMENTATION DIAGRAM
LIGO VACUUM EQUIPMENT
LOUISIANA SITE
LEFT END STATION

CAD FILE: V0490020
 SHEET: D
 DWG. NO.: V049-0-020
 REV: 1

SCALE: NONE
 SHEET: 1 OF 1