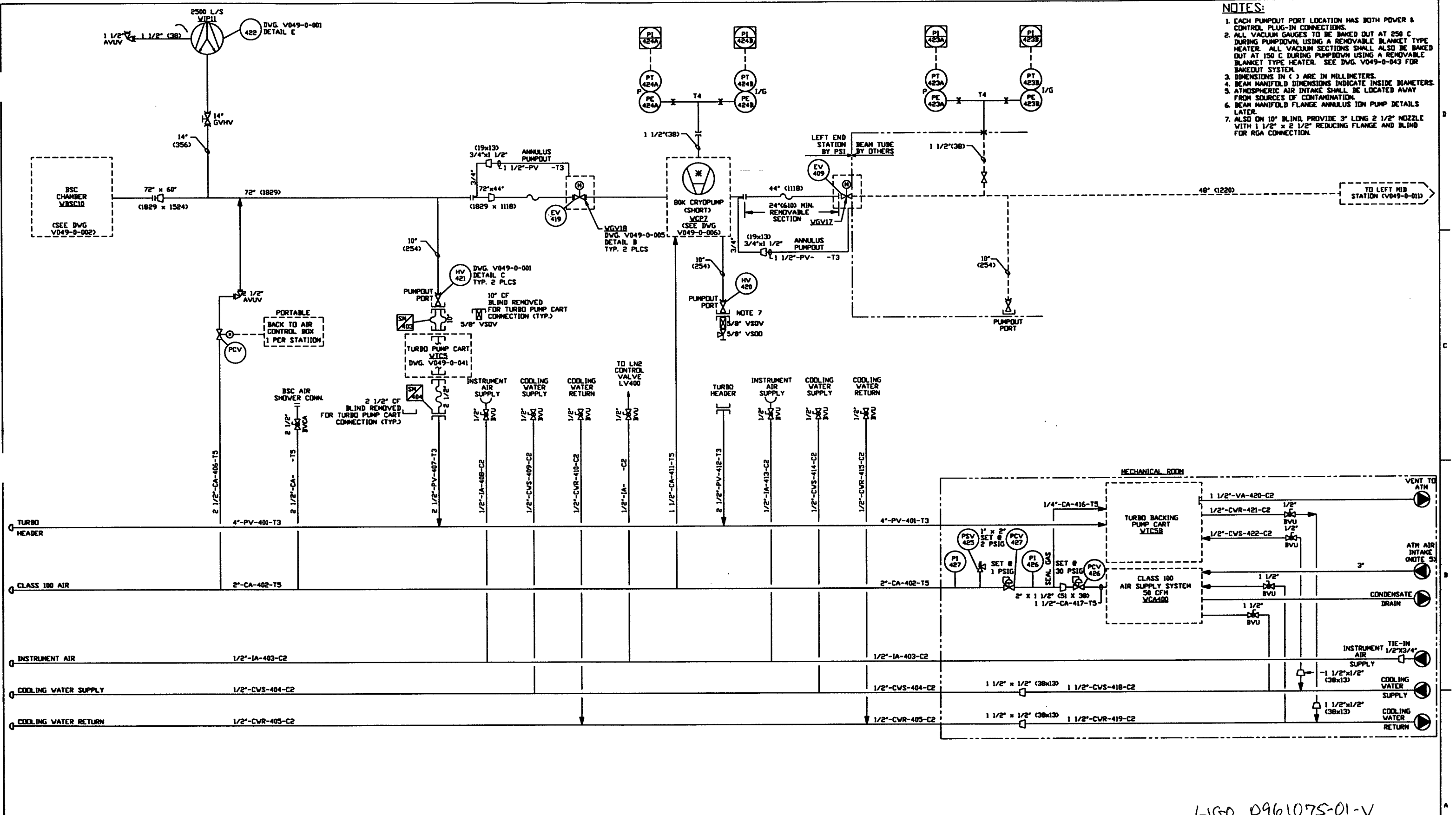


NOTES:

1. EACH PUMPOUT PORT LOCATION HAS BOTH POWER & CONTROL PLUG-IN CONNECTIONS.
2. ALL VACUUM GAUGES TO BE BAKED OUT AT 250 C DURING PUMPDOWN USING A REMOVABLE BLANKET TYPE HEATER. ALL VACUUM SECTIONS SHALL ALSO BE BAKED OUT AT 150 C DURING PUMPDOWN USING A REMOVABLE BLANKET TYPE HEATER. SEE DWG. V049-0-043 FOR BAKEDOUT SYSTEM.
3. DIMENSIONS IN () ARE IN MILLIMETERS.
4. BEAM MANIFOLD DIMENSIONS INDICATE INSIDE DIAMETERS.
5. ATMOSPHERIC AIR INTAKE SHALL BE LOCATED AWAY FROM SOURCES OF CONTAMINATION.
6. BEAM MANIFOLD FLANGE ANNULUS ION PUMP DETAILS LATER.
7. ALSO ON 10" BLIND, PROVIDE 3" LONG 2 1/2" NOZZLE WITH 1 1/2" x 2 1/2" REDUCING FLANGE AND BLIND FOR RGA CONNECTION.



LIGO D961075-01-V

NO.	REV	DESCRIPTION	DATE	BY	CHKD	DRWN	DATE	DESB
1		ISSUE FOR FOR	04.26.96	REB	TS	RT		0134
0		ISSUE FOR DESIGN	01.03.96	REB				0031
P1		PRELIMINARY DESIGN UPDATE	09.26.95	REB				0003

NO.	REV	DESCRIPTION	DATE	BY	CHKD	DRWN	DATE	DESB
1		ISSUE FOR FOR	04.26.96	REB	TS	RT		0134
0		ISSUE FOR DESIGN	01.03.96	REB				0031
P1		PRELIMINARY DESIGN UPDATE	09.26.95	REB				0003

NO.	REV	DESCRIPTION	DATE	BY	CHKD	DRWN	DATE	DESB
1		ISSUE FOR FOR	04.26.96	REB	TS	RT		0134
0		ISSUE FOR DESIGN	01.03.96	REB				0031
P1		PRELIMINARY DESIGN UPDATE	09.26.95	REB				0003

NO.	REV	DESCRIPTION	DATE	BY	CHKD	DRWN	DATE	DESB
1		ISSUE FOR FOR	04.26.96	REB	TS	RT		0134
0		ISSUE FOR DESIGN	01.03.96	REB				0031
P1		PRELIMINARY DESIGN UPDATE	09.26.95	REB				0003

PROCESS SYSTEMS INTERNATIONAL INC.
 20 WALTON DR. WESTBOROUGH, MASSACHUSETTS 01581 USA

PIPING & INSTRUMENTATION DIAGRAM
LIGO VACUUM EQUIPMENT
WASHINGTON SITE
LEFT END STATION

CAD FILE: V0490010
 SHEET: D
 DWG NO: V049-0-010
 REV: 1

SCALE: NONE
 SHEET: 1 OF 1

PROPRIETARY AND CONFIDENTIAL

THIS DOCUMENT CONTAINS PROPRIETARY INFORMATION BELONGING TO PROCESS SYSTEMS INTERNATIONAL, INC. OR ITS AFFILIATED COMPANIES AND SHALL BE USED ONLY FOR THE PURPOSE FOR WHICH IT WAS SUPPLIED. IT SHALL NOT BE REPRODUCED OR OTHERWISE USED, AND NO SUCH INFORMATION BE FURNISHED IN WHOLE OR IN PART TO ANY OTHER PARTY WITHOUT THE WRITTEN CONSENT OF PROCESS SYSTEMS INTERNATIONAL, INC. AND SHALL BE RETURNED UPON REQUEST.