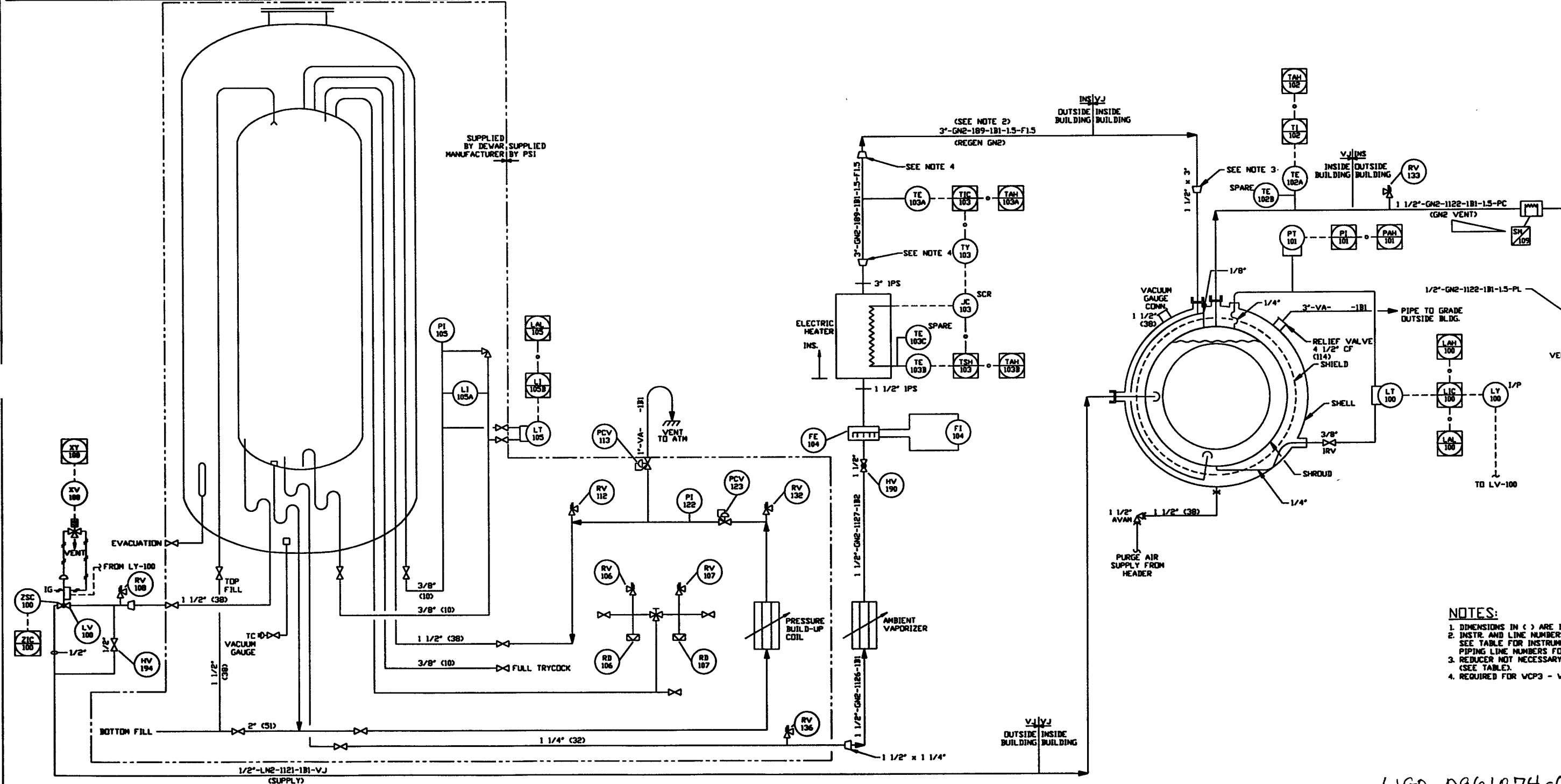


CRYOPUMP	LT-100	LV-100	PT-101	PI-101	TE-102A,B	TI-102	103A,B,C	FE-104	FI-104	HV-190	HV-194	LT-105	LI-105A	LI-105B	PI-105	RD-106	RV-106	RD-107	RV-107	RV-108	RV-112	PCV-113	PI-122	PCV-123	RV-132	RV-133	RV-136	1/2"-LN2-1121-1B1-VJ	1/2"-GN2-1122-1B1-15-PC	3"-GN2-189-1B1-15-F15	1/2"-GN2-1126-1B1	1/2"-GN2-1127-1B2	SM 109
WCP1	LT-150	LV-150	PT-151	PI-151	TE-152A,B	TI-152	153A,B,C	FE-154	FI-154	HV-192	HV-196	LT-155	LI-155A	LI-155B	PI-155	RD-156	RV-156	RD-157	RV-157	RV-158	RV-142	PCV-143	PI-172	PCV-173	RV-182	RV-183	RV-190	1/2"-LN2-1123-1B1-VJ	1/2"-GN2-1124-1B1-15-PC	3"-GN2-191-1B1-15-F15	1/2"-GN2-1129-1B1	1/2"-GN2-1130-1B2	SM 110
WCP2	LT-200	LV-200	PT-201	PI-201	TE-202A,B	TI-202	203A,B,C	FE-204	FI-204	HV-290	HV-294	LT-205	LI-205A	LI-205B	PI-205	RD-206	RV-206	RD-207	RV-207	RV-208	RV-212	PCV-213	PI-222	PCV-223	RV-232	RV-233	RV-236	1/2"-LN2-234-1B1-VJ	1/2"-GN2-235-1B1-15-PC	1/2"-GN2-238-1B1-15-F15	1/2"-GN2-241-1B1	1/2"-GN2-242-1B2	SM 202
WCP3	LT-250	LV-250	PT-251	PI-251	TE-252A,B	TI-252	253A,B,C	FE-254	FI-254	HV-292	HV-296	LT-255	LI-255A	LI-255B	PI-255	RD-256	RV-256	RD-257	RV-257	RV-258	RV-262	PCV-263	PI-272	PCV-273	RV-282	RV-283	RV-290	1/2"-LN2-236-1B1-VJ	1/2"-GN2-237-1B1-15-PC	1/2"-GN2-239-1B1-15-F15	1/2"-GN2-244-1B1	1/2"-GN2-245-1B2	SM 203
WCP4	LT-300	LV-300	PT-301	PI-301	TE-302A,B	TI-302	303A,B,C	FE-304	FI-304	HV-390	HV-394	LT-305	LI-305A	LI-305B	PI-305	RD-306	RV-306	RD-307	RV-307	RV-308	RV-312	PCV-313	PI-322	PCV-323	RV-332	RV-333	RV-336	1/2"-LN2-334-1B1-VJ	1/2"-GN2-335-1B1-15-PC	1/2"-GN2-338-1B1-15-F15	1/2"-GN2-341-1B1	1/2"-GN2-342-1B2	SM 302
WCP5	LT-350	LV-350	PT-351	PI-351	TE-352A,B	TI-352	353A,B,C	FE-354	FI-354	HV-392	HV-396	LT-355	LI-355A	LI-355B	PI-355	RD-356	RV-356	RD-357	RV-357	RV-358	RV-362	PCV-363	PI-372	PCV-373	RV-382	RV-383	RV-390	1/2"-LN2-336-1B1-VJ	1/2"-GN2-337-1B1-15-PC	1/2"-GN2-339-1B1-15-F15	1/2"-GN2-344-1B1	1/2"-GN2-345-1B2	SM 303
P6	LT-400	LV-400	PT-401	PI-401	TE-402A,B	TI-402	403A,B,C	FE-404	FI-404	HV-490	HV-494	LT-405	LI-405A	LI-405B	PI-405	RD-406	RV-406	RD-407	RV-407	RV-408	RV-462	PCV-463	PI-472	PCV-473	RV-482	RV-483	RV-490	1/2"-LN2-427-1B1-VJ	1/2"-GN2-428-1B1-15-PC	1/2"-GN2-429-1B1-15-F15	1/2"-GN2-431-1B1	1/2"-GN2-432-1B2	SM 402
P7	LT-450	LV-450	PT-451	PI-451	TE-452A,B	TI-452	453A,B,C	FE-454	FI-454	HV-492	HV-496	LT-455	LI-455A	LI-455B	PI-455	RD-456	RV-456	RD-457	RV-457	RV-458	RV-462	PCV-463	PI-472	PCV-473	RV-482	RV-483	RV-490	1/2"-LN2-427-1B1-VJ	1/2"-GN2-428-1B1-15-PC	1/2"-GN2-429-1B1-15-F15	1/2"-GN2-431-1B1	1/2"-GN2-432-1B2	SM 502
P8	LT-500	LV-500	PT-501	PI-501	TE-502A,B	TI-502	503A,B,C	FE-504	FI-504	HV-490	HV-494	LT-505	LI-505A	LI-505B	PI-505	RD-506	RV-506	RD-507	RV-507	RV-508	RV-562	PCV-563	PI-572	PCV-573	RV-582	RV-583	RV-590	1/2"-LN2-527-1B1-VJ	1/2"-GN2-528-1B1-15-PC	1/2"-GN2-529-1B1-15-F15	1/2"-GN2-531-1B1	1/2"-GN2-532-1B2	SM 502
LCP1	LT-600	LV-600	PT-601	PI-601	TE-602A,B	TI-602	603A,B,C	FE-604	FI-604	HV-690	HV-694	LT-605	LI-605A	LI-605B	PI-605	RD-606	RV-606	RD-607	RV-607	RV-608	RV-662	PCV-663	PI-672	PCV-673	RV-682	RV-683	RV-690	1/2"-LN2-684-1B1-VJ	1/2"-GN2-685-1B1-15-PC	3"-GN2-688-1B1-15-F15	1/2"-GN2-691-1B1	1/2"-GN2-692-1B2	SM 604
LCP2	LT-650	LV-650	PT-651	PI-651	TE-652A,B	TI-652	653A,B,C	FE-654	FI-654	HV-692	HV-696	LT-655	LI-655A	LI-655B	PI-655	RD-656	RV-656	RD-657	RV-657	RV-658	RV-662	PCV-663	PI-672	PCV-673	RV-682	RV-683	RV-690	1/2"-LN2-684-1B1-VJ	1/2"-GN2-685-1B1-15-PC	3"-GN2-688-1B1-15-F15	1/2"-GN2-691-1B1	1/2"-GN2-692-1B2	SM 605
LCP3	LT-700	LV-700	PT-701	PI-701	TE-702A,B	TI-702	703A,B,C	FE-704	FI-704	HV-790	HV-794	LT-705	LI-705A	LI-705B	PI-705	RD-706	RV-706	RD-707	RV-707	RV-708	RV-762	PCV-763	PI-772	PCV-773	RV-782	RV-783	RV-790	1/2"-LN2-728-1B1-VJ	1/2"-GN2-729-1B1-15-PC	1/2"-GN2-732-1B1	1/2"-GN2-733-1B2	SM 701	
LCP4	LT-800	LV-800	PT-801	PI-801	TE-802A,B	TI-802	803A,B,C	FE-804	FI-804	HV-890	HV-894	LT-805	LI-805A	LI-805B	PI-805	RD-806	RV-806	RD-807	RV-807	RV-808	RV-862	PCV-863	PI-872	PCV-873	RV-882	RV-883	RV-890	1/2"-LN2-828-1B1-VJ	1/2"-GN2-829-1B1-15-PC	1/2"-GN2-832-1B1	1/2"-GN2-833-1B2	SM 801	



- NOTES:**
1. DIMENSIONS IN () ARE IN MILLIMETERS.
 2. INSTR. AND LINE NUMBERS SHOWN ARE FOR WCP1. SEE TABLE FOR INSTRUMENT TAG NUMBERS AND PIPING LINE NUMBERS FOR ALL 80K CRYOPUMPS.
 3. REDUCER NOT NECESSARY ON 1 1/2" REGEN LINES (SEE TABLE).
 4. REQUIRED FOR WCP3 - WCP8, LCP3 & LCP4 ONLY.

LIGO D961074-01-V

DETAIL AND CONFIDENTIAL PROCESS SYSTEMS INTERNATIONAL, INC. OR ITS AFFILIATED COMPANIES AND SHALL BE USED ONLY FOR THE PURPOSES FOR WHICH IT WAS SUPPLIED. IT SHALL NOT BE COPIED, REPRODUCED OR OTHERWISE TRANSMITTED IN ANY FORM OR BY ANY MEANS WITHOUT THE WRITTEN PERMISSION OF PROCESS SYSTEMS INTERNATIONAL, INC. AND SHALL BE RETURNED UPON REQUEST.	UNLESS OTHERWISE SPECIFIED DIMENSIONS ARE IN INCHES FINISHES: FRACTIONS 3/16" 1/8" 3/16" 1/4" 3/8" 1/2" 5/8" 3/4" 7/8" 1" 1 1/8" 1 1/4" 1 3/8" 1 1/2" 1 3/4" 1 7/8" 2" 2 1/8" 2 1/4" 2 3/8" 2 1/2" 2 5/8" 3" 3 1/8" 3 1/4" 3 3/8" 3 1/2" 3 5/8" 4" 4 1/8" 4 1/4" 4 3/8" 4 1/2" 4 5/8" 5" 5 1/8" 5 1/4" 5 3/8" 5 1/2" 5 5/8" 6" 6 1/8" 6 1/4" 6 3/8" 6 1/2" 6 5/8" 7" 7 1/8" 7 1/4" 7 3/8" 7 1/2" 7 5/8" 8" 8 1/8" 8 1/4" 8 3/8" 8 1/2" 8 5/8" 9" 9 1/8" 9 1/4" 9 3/8" 9 1/2" 9 5/8" 10" 10 1/8" 10 1/4" 10 3/8" 10 1/2" 10 5/8" 11" 11 1/8" 11 1/4" 11 3/8" 11 1/2" 11 5/8" 12" 12 1/8" 12 1/4" 12 3/8" 12 1/2" 12 5/8" 14" 14 1/8" 14 1/4" 14 3/8" 14 1/2" 14 5/8" 16" 16 1/8" 16 1/4" 16 3/8" 16 1/2" 16 5/8" 18" 18 1/8" 18 1/4" 18 3/8" 18 1/2" 18 5/8" 20" 20 1/8" 20 1/4" 20 3/8" 20 1/2" 20 5/8" 24" 24 1/8" 24 1/4" 24 3/8" 24 1/2" 24 5/8" 30" 30 1/8" 30 1/4" 30 3/8" 30 1/2" 30 5/8" 36" 36 1/8" 36 1/4" 36 3/8" 36 1/2" 36 5/8" 42" 42 1/8" 42 1/4" 42 3/8" 42 1/2" 42 5/8" 48" 48 1/8" 48 1/4" 48 3/8" 48 1/2" 48 5/8" 60" 60 1/8" 60 1/4" 60 3/8" 60 1/2" 60 5/8" 72" 72 1/8" 72 1/4" 72 3/8" 72 1/2" 72 5/8" 84" 84 1/8" 84 1/4" 84 3/8" 84 1/2" 84 5/8" 96" 96 1/8" 96 1/4" 96 3/8" 96 1/2" 96 5/8" 108" 108 1/8" 108 1/4" 108 3/8" 108 1/2" 108 5/8" 120" 120 1/8" 120 1/4" 120 3/8" 120 1/2" 120 5/8"		DO NOT SCALE THIS DRAWING USED ON: NEXT ASSY:		1 ISSUE FOR FOR 2 ISSUE FOR DESIGN P1 REVISED P2 PRELIMINARY DESIGN UPDATE		REV RT SM TS DMCV RJV REV RT SM TS DMCV RJV CHKD DRWN DATE BDD9		PROCESS SYSTEMS INTERNATIONAL, INC. 20 WALTON DR. WESTBOROUGH, MASSACHUSETTS 01581 USA PIPING & INSTRUMENTATION DIAGRAM LIGO VACUUM EQUIPMENT 80K CRYOPUMP		GIB FILE V049006 SIZE D DWG NO. V049-0-006 REV. 1	
	V049-0-001 P & ID LEGEND DVG. NO. DESCRIPTION DVG. NO. DESCRIPTION	REFERENCE DRAWINGS		ISSUE DESCRIPTION		SCALE NONE SHEET 1 OF 1						