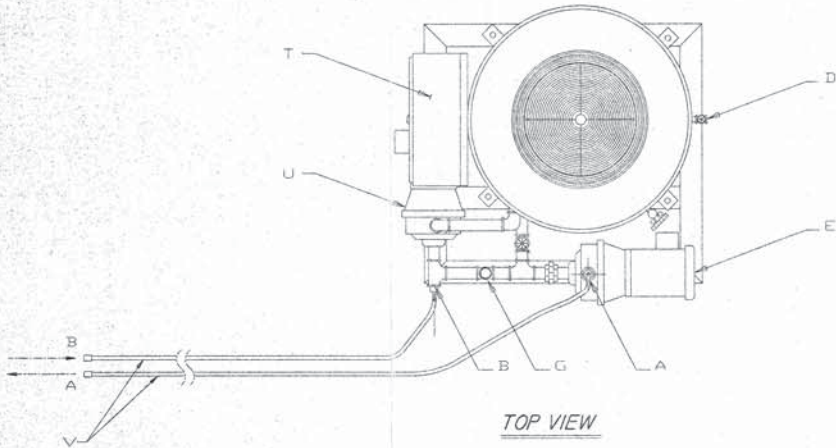


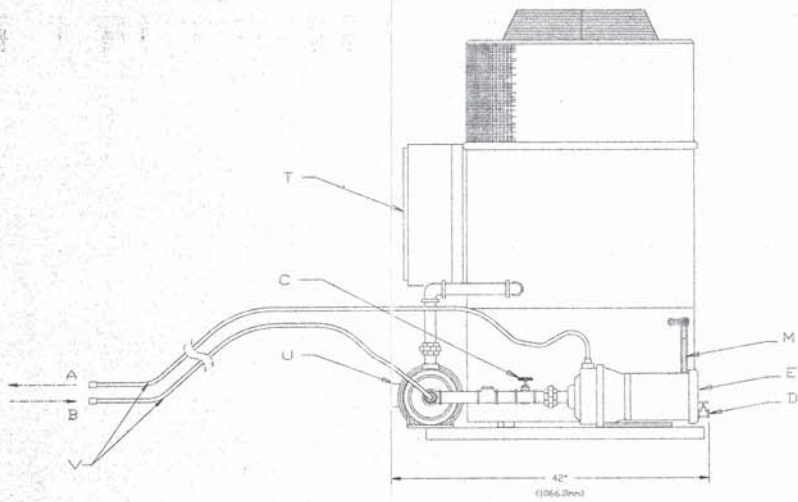
LEGEND

- A 1/2" M.P.T. SUPPLY HOSE 50-FT. LONG
- B 1/2" M.P.T. RETURN HOSE 50 FT. LONG
- C GATE VALVE
- D DRAIN
- E SYSTEM PUMP
- F DUAL PRESSURE CONTROL
- G CHECK VALVE
- H WATER OUT TEMPERATURE GAUGE
- J WATER IN TEMPERATURE GAUGE
- K COMPRESSOR, SYSTEM PUMP AND BY-PASS PUMP SWITCHES
- L CHARGING VALVE (HIGH SIDE)
- M STORAGE TANK LEVEL GAUGE
- N CHARGING VALVE (LOW SIDE)
- O AUTOMATIC AIR-ELIMINATOR
- P TEMPERATURE OPERATING CONTROL
- R WATER SUCTION PRESSURE GAUGE
- S WATER DISCHARGE PRESSURE GAUGE
- T MAIN ELECTRICAL CONTROL ENCLOSURE
- U BY-PASS PUMP
- V 50 FT UNINSULATED HOSES

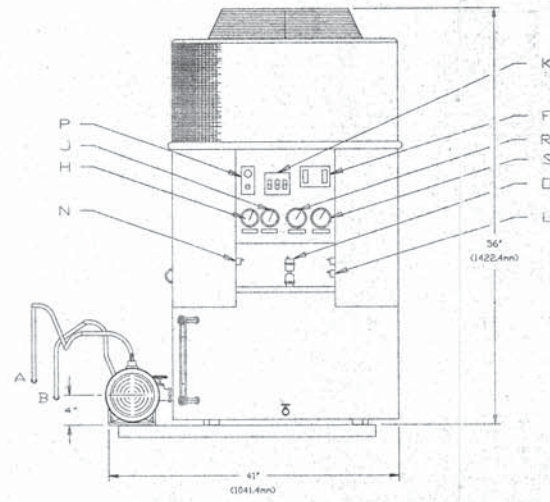
CUSTOMER CONNECTORS ARE CORRECT SIZE. HOSE SIZE TO BE MIN. 3/4" OR 1"



TOP VIEW



FRONT VIEW



SIDE VIEW

PROCESS SYSTEMS INTERNATIONAL
DOCUMENT REVIEW CHECKLIST

PROJECT NAME: _____
PSI DOC. NO. _____

CHK	PROJECT ENG.	BY / DATE
_____	MECHANICAL	_____
_____	STRESS	_____
_____	ELECTRICAL	F. Rank 6-7-96
_____	PROCESS	_____
_____	MFG. ENG.	_____
_____	MANUF.	_____
_____	QA	_____
_____	DR.	_____

PROCESS SYSTEMS INTERNATIONAL
DOCUMENT APPROVAL CHECKLIST

PROJECT NAME: _____
PSI DOC. NO. _____

NOTE: THIS REVIEW DOES NOT RELIEVE THE SELLER OR CONTRACTOR OF ANY OBLIGATION UNDER THE P.O. OR CONTRACT.

- PA = FINAL APPROVAL
- AS = APPROVED AS NOTED - REVISE & RESUBMIT
- AP = APPROVED FOR FABRICATION (with Remarks)
- NA = NOT APPROVED
- FP = RELEASED FOR PROCUREMENT OF MATERIALS ONLY
- RR = REVISE & RESUBMIT

BY: *[Signature]* DATE: *4/9/96*

VENDOR NAME: *Edwards Eng.*
REVISION NO.: _____
SUBMITAL NO.: _____
STATUS: *Revision 4 Approval*

PSI DWG # *1049-8-267*
APR 30 1996

REV.	DESCRIPTION	D'WN

PRELIMINARY DRAWING

FOR THE USE OF EDWARDS ENGINEERING CORP. ONLY

Edwards ENGINEERING CORP.
PHYSICAL DRIVING UNIT

PROCESS SYSTEM

PHYSICAL DRAWING FOR THE MODEL NO. PACKAGED AIR-COOLED CHILLER UNIT

S/N: 966505 & 966506 LIGO-DGX1061-CO-V

D'WN: N.J.M. DATE: 4-19-96 P'WN: J.M.

CR'D: S.M.C. SCALE: 1/2" = 1'-0" SP: 2264-M