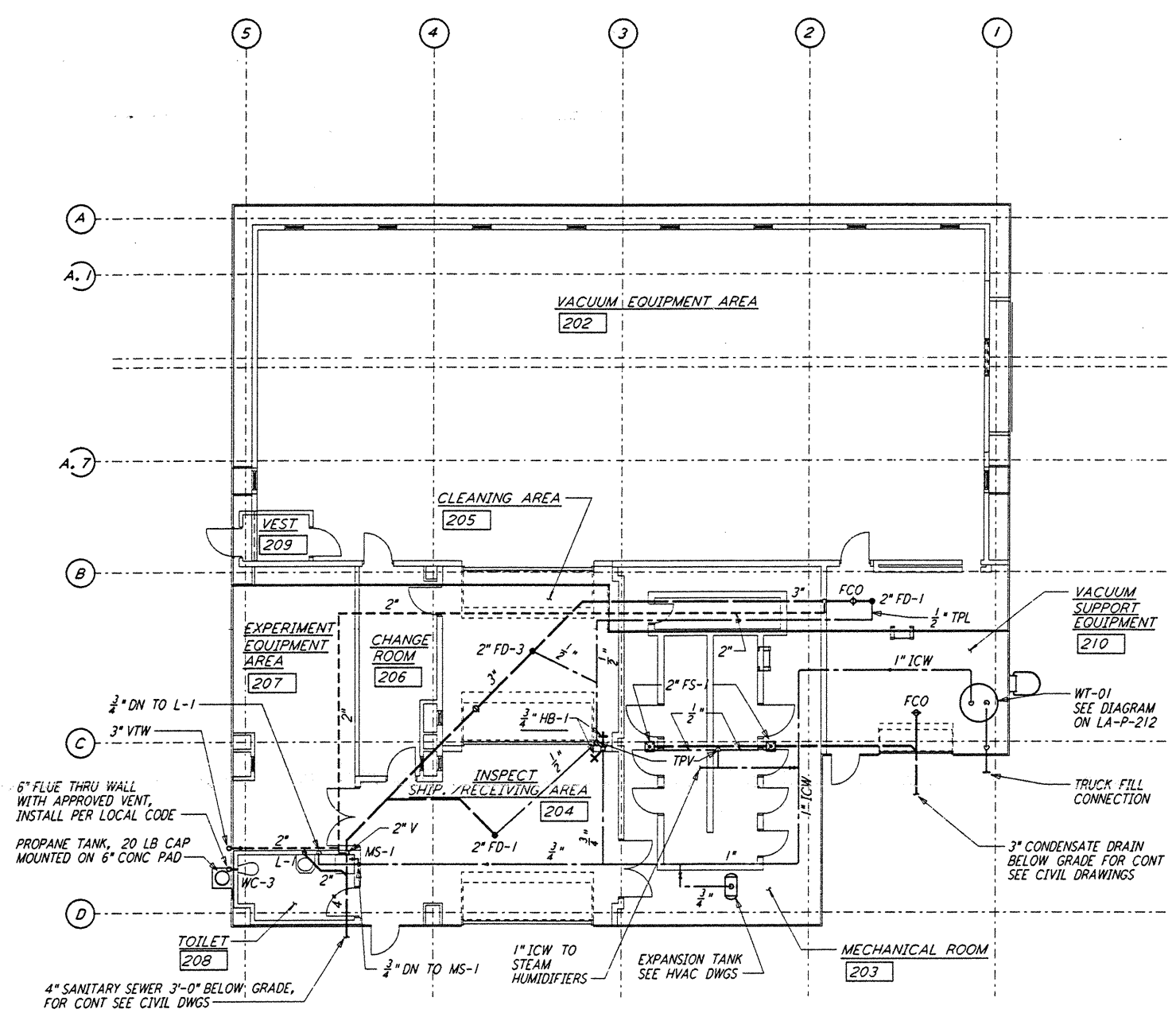
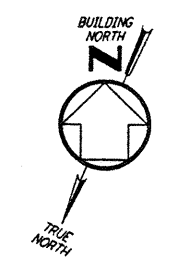
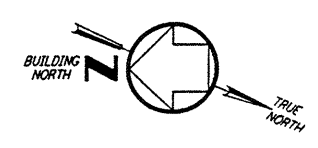
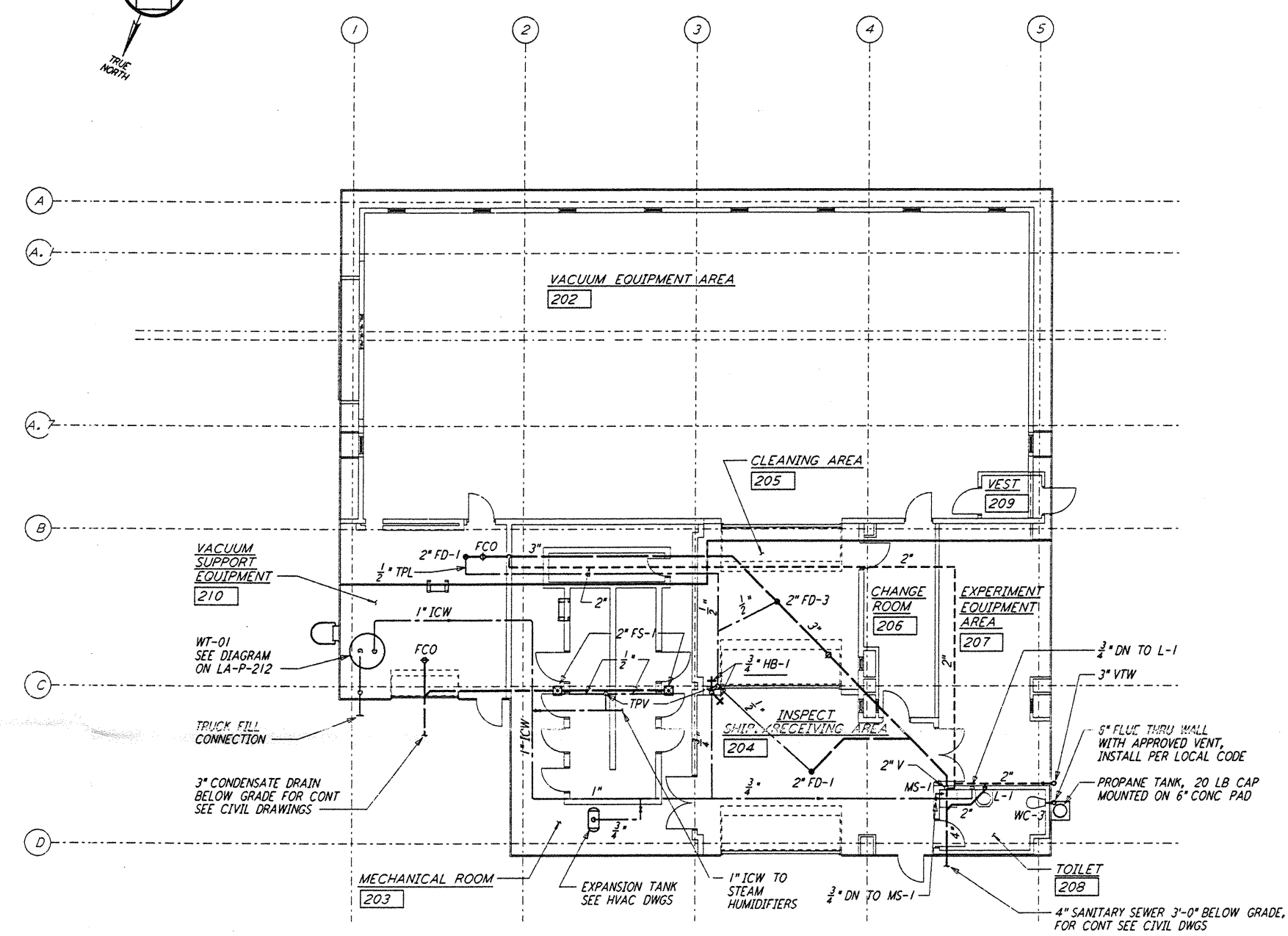


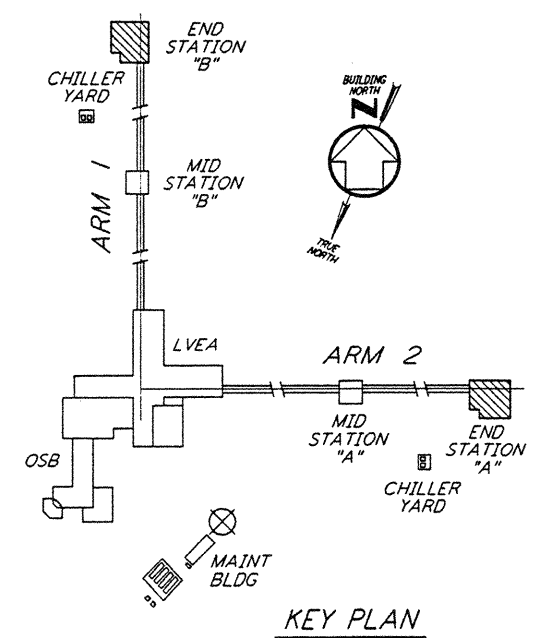
NOTE:
 1. PROVIDE SIGNS AT ALL WATER OUTLETS
 IN THE END STATIONS STATING:
 "DANGER - UNSAFE WATER"



END STATION "B" FLOOR PLAN
 $\frac{3}{8}'' = 1'-0''$



END STATION "A" FLOOR PLAN
 $\frac{3}{8}'' = 1'-0''$



KEY PLAN

LIGO-D961052-B-O
 $\frac{3}{8}'' = 1'-0''$

This document and the design it covers are the property of PARSONS. They are loaned only with the borrower's expressed written agreement that they will not be reproduced, copied, loaned, exhibited, or used in any other way, except by written consent from PARSONS to the borrower.

NO.	DATE	BY	CHKD	ENGR	PROJ	DESCRIPTION
B	6-14-96	DG	MP	MN	TOM	FINAL DESIGN REVIEW
A	10-31-95	SG	MP	MN	TOM	PRELIMINARY DESIGN REVIEW

DRAWN	DC
CHECKED	
ENGINEER	
PROJ	

PARSONS
 100 WEST WALNUT STREET
 PASADENA, CALIFORNIA

LIGO
 CALIFORNIA INSTITUTE OF TECHNOLOGY
 MASSACHUSETTS INSTITUTE OF TECHNOLOGY

LASER INTERFEROMETER
 GRAVITATIONAL-WAVE OBSERVATORY
 SITE NO. 2 - LIVINGSTON, LOUISIANA

TITLE: PLUMBING END STATION FLOOR PLAN
 SCALE: AS NOTED
 CONTRACT NUMBER: PPI50969
 PROJECT NUMBER: 8094

SHEET NUMBER: **LA-P-211**

THU JUN 13 10:04:27 1996 5.37 LDD02 J:\LIGO\SLF+E2\M\LAP211.DWG

THU JUN 13 10:04:27 1996 5.37 LDD02 J:\LIGO\SLF+E2\M\LAP211.DWG