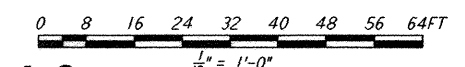
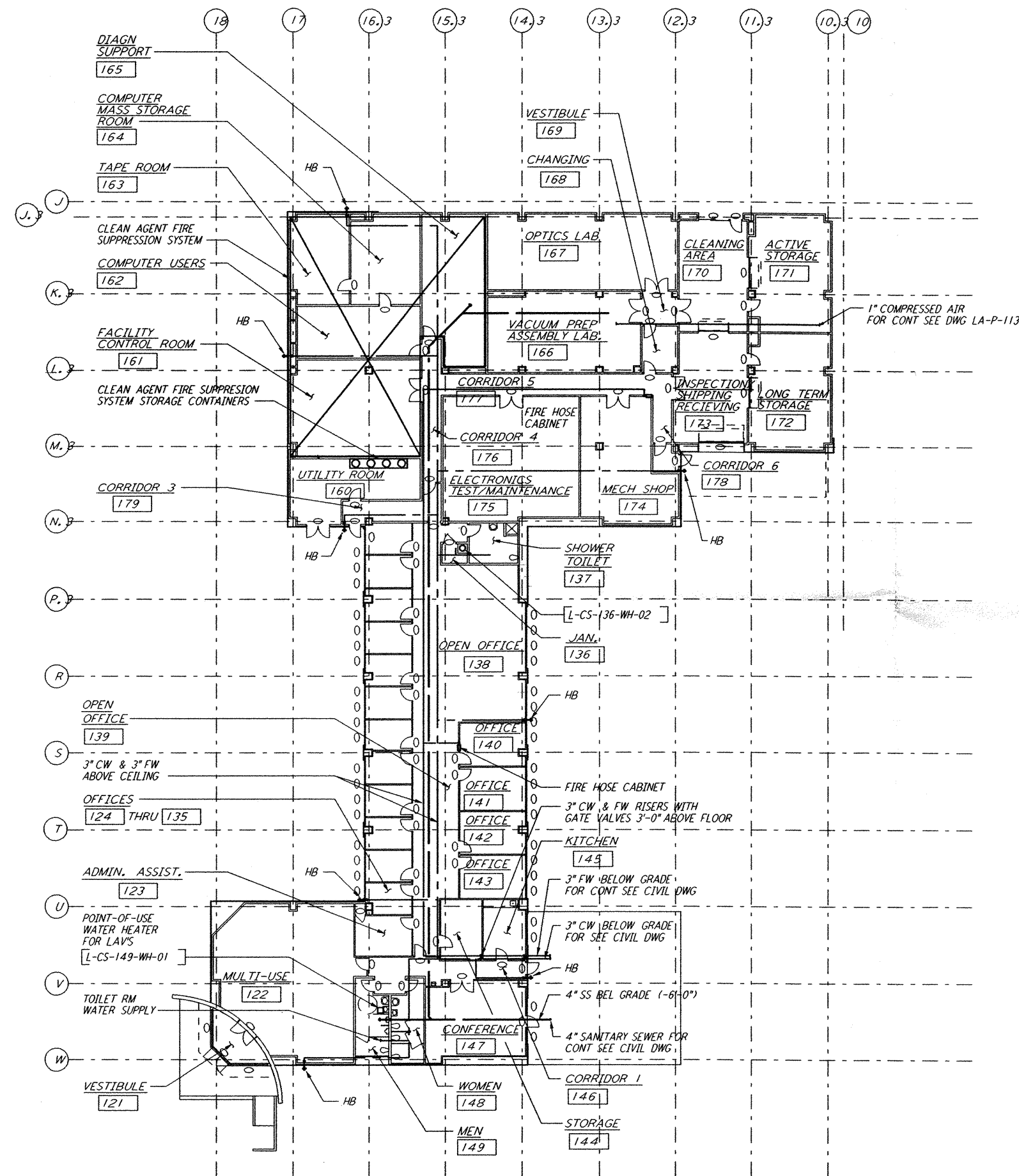


not be reproduced, copied, loaned, exhibited, or used in any other way, except by written consent from PARSONS to the borrower.

This document and the design it covers are the property of PARSONS. They are loaned only with the borrower's expressed written agreement that they will



LIGO-D961049-A-O

NO.	DATE	APPRO BY	DESCRIPTION OF REVISION

ISSUE	NO.	DATE	APPRO BY	ISSUED FOR
J				
H				
G				
F				
E				
D				
C				
B				
A	10/31/95	TDM		PRELIMINARY DESIGN REVIEW

DATE	10/31/95
DRAWN	CLP
CHECKED	
ENGINEER	
PROJ MGR	

PARSONS
100 WEST WALNUT STREET
PASADENA, CALIFORNIA

LIGO
CALIFORNIA INSTITUTE OF TECHNOLOGY
MASSACHUSETTS INSTITUTE OF TECHNOLOGY

LASER INTERFEROMETER
GRAVITATIONAL-WAVE OBSERVATORY
SITE NO.2 - LIVINGSTON, LOUISIANA

CORNER STATION
OSB FLOOR PLAN

SCALE: CONTRACT NUMBER: PROJECT NUMBER:
AS NOTED PPI50969 8094

SHEET NUMBER: REVISIONS:
LA-P-112

Mon Oct 30 20:54:39 1995 s3-v18b2 J:\PLOTS\QUEUES\18B2\MUI112E.PRF