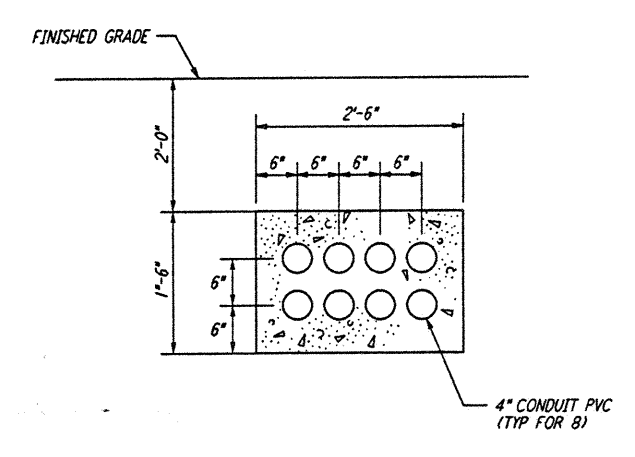
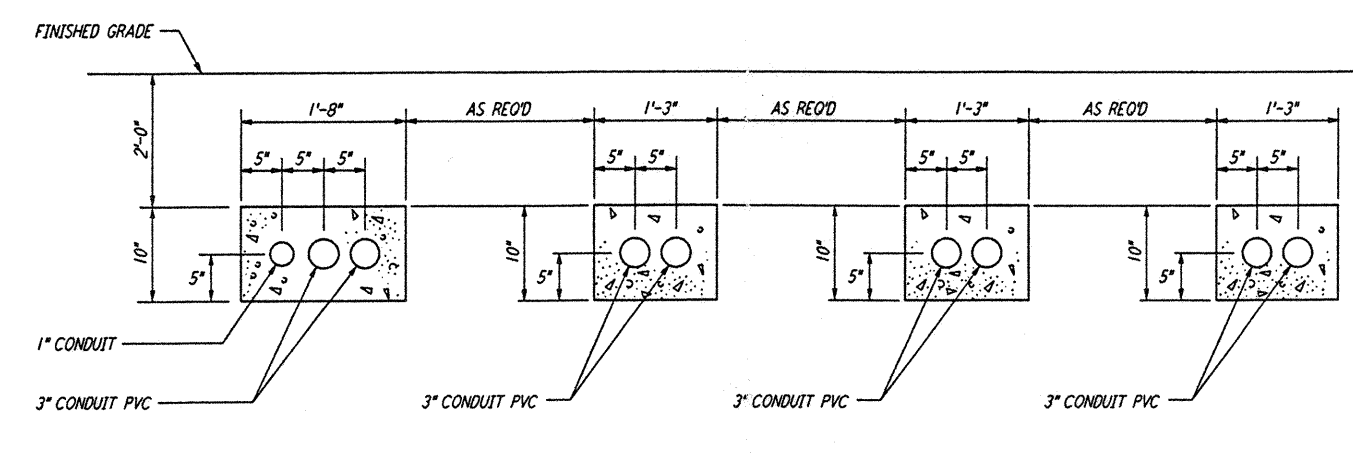


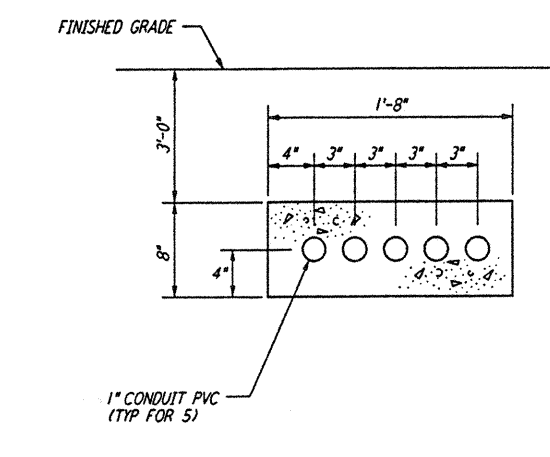
5 4 3 2



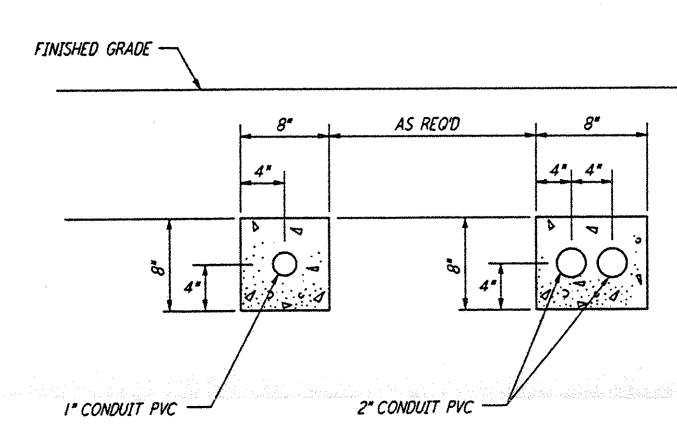
SECTION A REF
 NTS LA-E-112



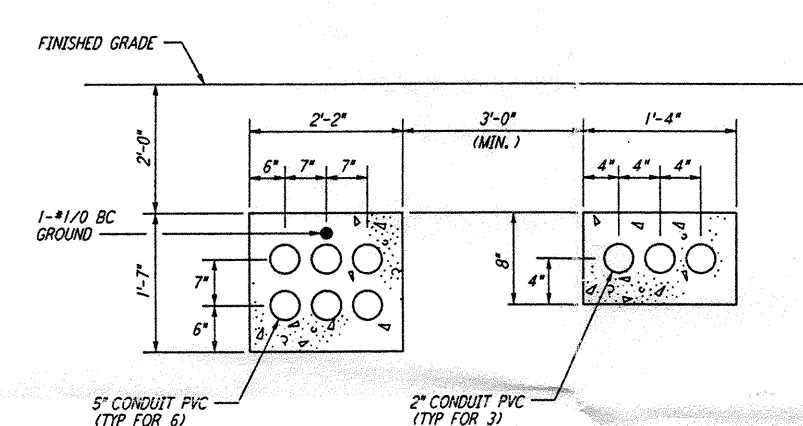
SECTION B REF
 NTS LA-E-112



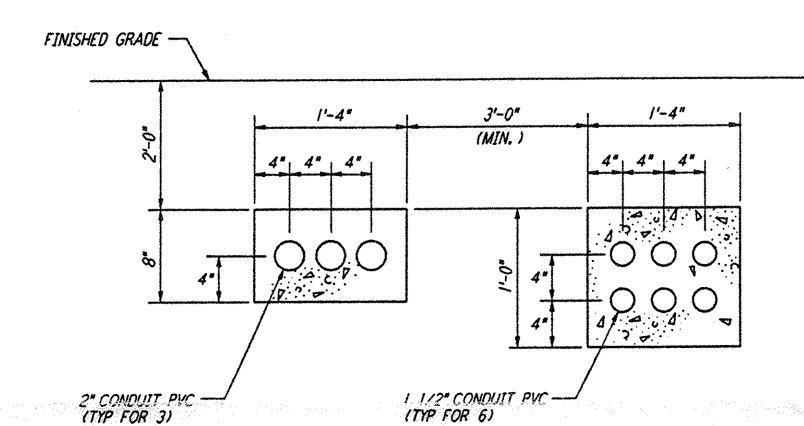
SECTION C REF
 NTS LA-E-112



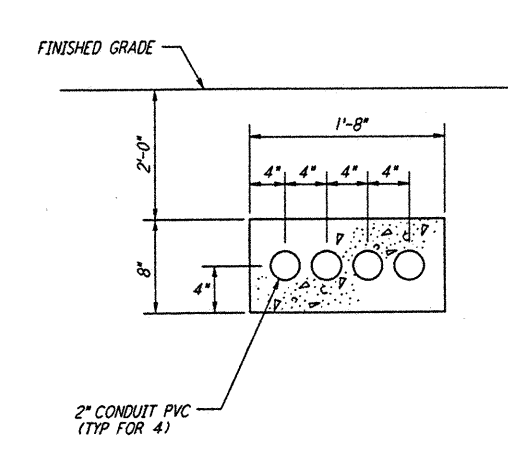
SECTION D REF
 NTS LA-E-112



SECTION E REF
 NTS LA-E-104
 LA-E-112



SECTION F REF
 NTS LA-E-104



SECTION G REF
 NTS LA-E-104

LIGO-D961037-A-0

This document and the design it covers are the property of PARSONS. They are loaned only with the borrower's expressed written agreement that they will not be reproduced, copied, loaned, exhibited, or used in any other way, except by written consent from PARSONS to the borrower.

NO.	DATE	BY	CHKD	ENGR	PROJ	DESCRIPTION
A	6-14-96	JCL	WJL	WJL	WJL	FINAL DESIGN REVIEW

DRAWN	M. M.
CHECKED	
ENGINEER	
PROJ	

PARSONS
 100 WEST WALNUT STREET
 PASADENA, CALIFORNIA

LIGO
 CALIFORNIA INSTITUTE OF TECHNOLOGY
 MASSACHUSETTS INSTITUTE OF TECHNOLOGY

LASER INTERFEROMETER
 GRAVITATIONAL-WAVE OBSERVATORY
 SITE NO. 2 - LIVINGSTON, LOUISIANA

TITLE	SCALE	CONTRACT NUMBER	PROJECT NUMBER
ELECTRICAL CORNER STATION UNDERGROUND SECTIONS	NONE	PP150969	8094
SHEET NUMBER	LA-E-400		REVISIONS

5 4 3 2 1